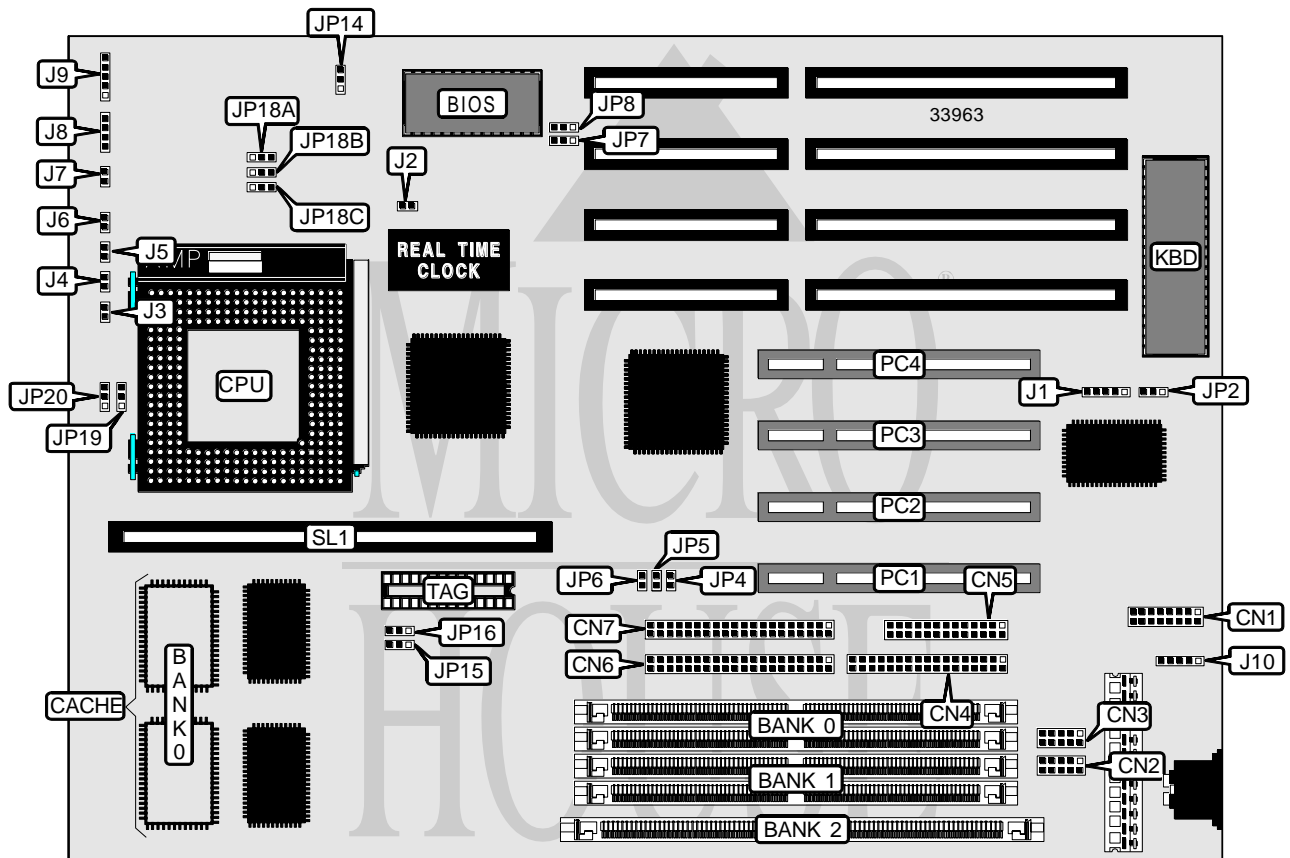


CALIFORNIA GRAPHICS & PERIPHERALS, INC.

SUNRAY II VX

Processor	CX M1/AM K5/Pentium
Processor Speed	75/90/100/120/133/150/166/180/200MHz
Chip Set	Intel
Video Chip Set	None
Maximum Onboard Memory	128MB (EDO supported)
Maximum Video Memory	None
Cache	256/512KB
BIOS	Award
Dimensions	280mm x 220mm
I/O Options	32-bit PCI slots (4), floppy drive interface, green PC connector, IDE interfaces (2), parallel port, PS/2 mouse interface, serial ports (2), cache slot, IR connector, USB connector
NPU Options	None



Continued on next page. . .

CALIFORNIA GRAPHICS & PERIPHERALS, INC.

SUNRAY II VX

... continued from previous page

CONNECTIONS			
Purpose	Location	Purpose	Location
USB connector	CN1	Green PC LED	J4
Serial port 1	CN2	IDE interface LED	J5
Serial port 2	CN3	Turbo switch	J6
Parallel port	CN4	Reset switch	J7
Floppy drive interface	CN5	Speaker	J8
IDE interface 1	CN6	Power LED & keylock	J9
IDE interface 2	CN7	PS/2 mouse interface	J10
IR connector	J1	32-bit PCI slots	PC1 - PC4
Chassis fan power	J2	Cache slot	SL1
Green PC connector	J3		

USER CONFIGURABLE SETTINGS		
Function	Label	Position
Clock rate set as ISA CLOCK	JP2	Pins 1 & 2 closed
Clock rate set as 12MHz	JP2	Pins 2 & 3 closed
Flash BIOS normal operation	JP7	Pins 1 & 2 closed
Flash BIOS flash mode	JP7	Pins 2 & 3 closed
Flash BIOS voltage select 5v	JP8	Pins 1 & 2 closed
Flash BIOS voltage select 12v	JP8	Pins 2 & 3 closed

DRAM CONFIGURATION			
Size	Bank 0	Bank 1	Bank 2
8MB	None	None	(1) 1M x 64
8MB	(2) 1M x 36	None	None
16MB	None	None	(1) 2M x 64
16MB	None	(2) 1M x 36	(1) 1M x 64
16MB	(2) 2M x 36	None	None
16MB	(2) 1M x 36	(2) 1M x 36	None
24MB	None	(2) 2M x 36	(1) 1M x 64
24MB	None	(2) 1M x 36	(1) 2M x 64
24MB	(2) 2M x 36	(2) 1M x 36	None
32MB	None	None	(1) 4M x 64
32MB	None	(2) 2M x 36	(1) 2M x 64
32MB	(2) 4M x 36	None	None
32MB	(2) 2M x 36	(2) 2M x 36	None
40MB	None	(2) 4M x 36	(1) 1M x 64
40MB	None	(2) 1M x 36	(1) 4M x 64
40MB	(2) 4M x 36	(2) 1M x 36	None
48MB	None	(2) 2M x 36	(1) 4M x 64
48MB	None	(2) 4M x 36	(1) 2M x 64
48MB	(2) 2M x 36	(2) 4M x 36	None
64MB	None	None	(1) 8M x 64
64MB	None	(2) 4M x 36	(1) 4M x 64

Continued on next page. . .

CALIFORNIA GRAPHICS & PERIPHERALS, INC.

SUNRAY II VX

... continued from previous page

DRAM CONFIGURATION (CON'T)			
Size	Bank 0	Bank 1	Bank 2
64MB	(2) 8M x 36	None	None
64MB	(2) 4M x 36	(2) 4M x 36	None
72MB	None	(2) 8M x 36	(1) 1M x 64
72MB	None	(2) 1M x 36	(1) 8M x 64
72MB	(2) 8M x 36	(2) 1M x 36	None
80MB	None	(2) 2M x 36	(1) 8M x 64
80MB	None	(2) 8M x 36	(1) 2M x 64
80MB	(2) 2M x 36	(2) 8M x 36	None
96MB	None	(2) 8M x 36	(1) 4M x 64
96MB	None	(2) 4M x 36	(1) 8M x 64
96MB	(2) 8M x 36	(2) 4M x 36	None
128MB	None	(2) 8M x 36	(1) 8M x 64
128MB	(2) 8M x 36	(2) 8M x 36	None

Note: Board accepts EDO memory. Board also accepts x 32 SIMMs.

CACHE CONFIGURATION			
Size	Bank 0	SL1	TAG
256KB (A)	(2) 32K x 32	Not installed	Unidentified
256KB (B)	None	256KB module installed	Unidentified
512KB (A)	(2) 32K x 32	256KB module installed	Unidentified
512KB (B)	(2) 64K x 32	Not installed	Unidentified
512KB (C)	None	512KB module installed	Unidentified

CACHE JUMPER CONFIGURATION		
Size	JP15	JP16
256KB (A)	Pins 1 & 2 closed	Pins 1 & 2 closed
256KB (B)	Pins 2 & 3 closed	Pins 1 & 2 closed
512KB (A)	Pins 1 & 2 closed	Pins 1 & 2 closed
512KB (B)	Pins 1 & 2 closed	Pins 2 & 3 closed
512KB (C)	Pins 2 & 3 closed	Pins 1 & 2 closed

CPU SPEED SELECTION (CYRIX)							
CPU speed	Clock speed	Multiplier	JP4	JP5	JP6	JP19	JP20
120MHz	50MHz	2x	Closed	Closed	Open	1 & 2	2 & 3
133MHz	55MHz	2x	Open	Closed	Open	1 & 2	2 & 3
150MHz	60MHz	2x	Closed	Open	Open	1 & 2	2 & 3
166MHz	66MHz	2x	Open	Open	Open	1 & 2	2 & 3
200MHz	75MHz	2x	Open	Open	Closed	1 & 2	2 & 3

Note: Pins designated should be in the closed position.

Continued on next page. . .

CALIFORNIA GRAPHICS & PERIPHERALS, INC.

SUNRAY II VX

... continued from previous page

CPU SPEED SELECTION (INTEL)							
CPU speed	Clock speed	Multiplier	JP4	JP5	JP6	JP19	JP20
75MHz	50MHz	1.5x	Closed	Closed	Open	1 & 2	1 & 2
90MHz	60MHz	1.5x	Closed	Open	Open	1 & 2	1 & 2
100MHz	66MHz	1.5x	Open	Open	Open	1 & 2	1 & 2
120MHz	60MHz	2x	Closed	Open	Open	1 & 2	2 & 3
133MHz	66MHz	2x	Open	Open	Open	1 & 2	2 & 3
150MHz	60MHz	2.5x	Closed	Open	Open	2 & 3	2 & 3
166MHz	66MHz	2.5x	Open	Open	Open	2 & 3	2 & 3
180MHz	60MHz	3x	Closed	Open	Open	2 & 3	1 & 2
200MHz	66MHz	3x	Open	Open	Open	2 & 3	1 & 2
Note: Pins designated should be in the closed position.							

CPU TYPE SELECTION			
Type	JP18A	JP18B	JP18C
CX M1	Pins 1 & 2 closed	Pins 1 & 2 closed	Pins 1 & 2 closed
AM K5	Pins 1 & 2 closed	Pins 1 & 2 closed	Pins 1 & 2 closed
P54C/CTB	Pins 1 & 2 closed	Pins 1 & 2 closed	Pins 1 & 2 closed
P55C	Pins 2 & 3 closed	Pins 2 & 3 closed	Pins 2 & 3 closed

CPU VOLTAGE SELECTION	
Voltage	JP14
2.5v	Pins 1 & 2 closed
2.8v	Pins 2 & 3 closed
2.9v	Open