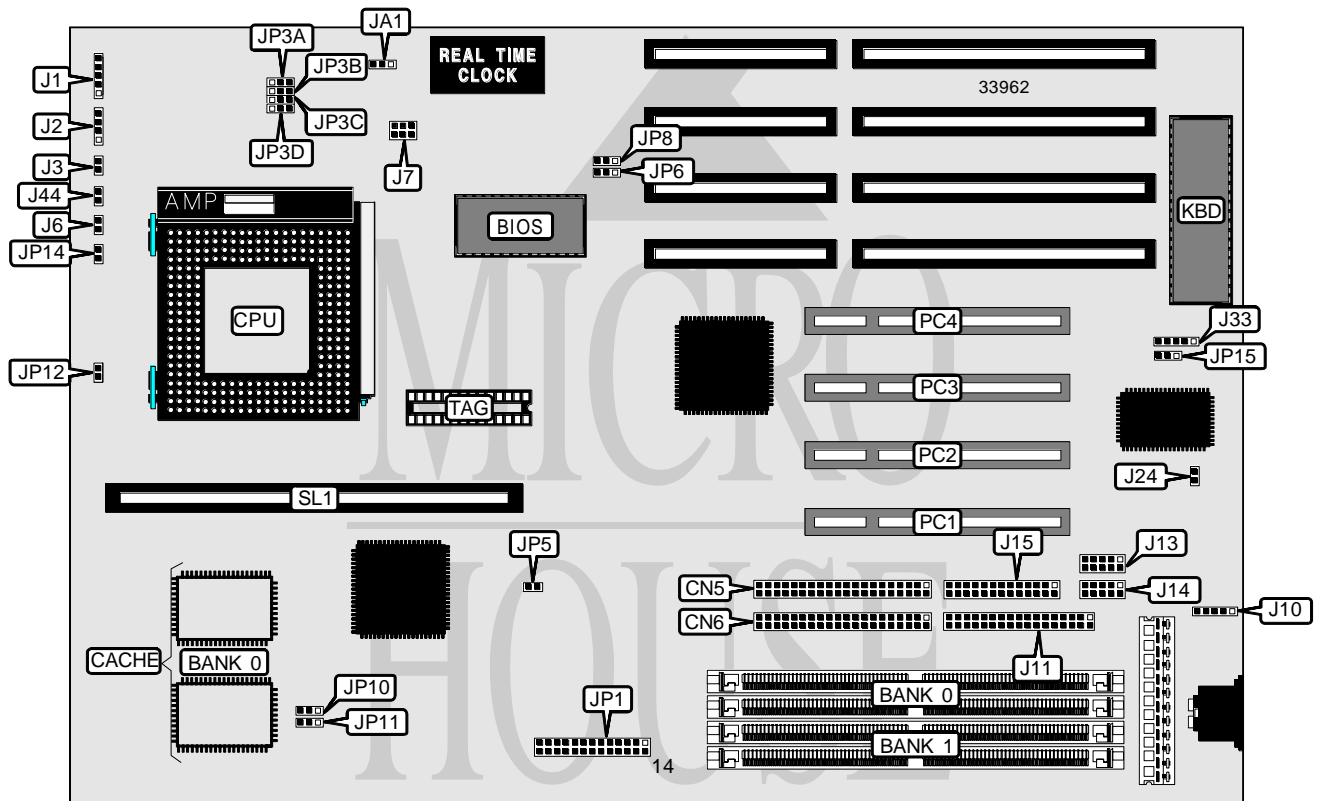


# CALIFORNIA GRAPHICS & PERIPHERALS, INC. SUNRAY II PRO EVOLUTION

<b>Processor</b>	CX M1/Pentium
<b>Processor Speed</b>	75/90/100/120/133/150/166/180/200MHz
<b>Chip Set</b>	Intel
<b>Video Chip Set</b>	None
<b>Maximum Onboard Memory</b>	512MB (EDO supported)
<b>Maximum Video Memory</b>	None
<b>Cache</b>	256/512KB
<b>BIOS</b>	Award
<b>Dimensions</b>	280mm x 220mm
<b>I/O Options</b>	32-bit PCI slots (4), floppy drive interface, green PC connector, IDE interfaces (2), parallel port, PS/2 mouse interface, serial ports (2), cache slot, IR connector
<b>NPU Options</b>	None



Continued on next page. . .

# CALIFORNIA GRAPHICS & PERIPHERALS, INC.

## SUNRAY II PRO EVOLUTION

... continued from previous page

CONNECTIONS			
Purpose	Location	Purpose	Location
IDE interface 2	CN5	Serial port 1	J13
IDE interface 1	CN6	Serial port 2	J14
Power LED & keylock	J1	Parallel port	J15
Speaker	J2	IR connector	J33
Reset switch	J3	Turbo switch	J44
Green PC LED	J6	IDE interface LED	JP5
Chassis fan power	J7	Green PC connector	JP14
PS/2 mouse interface	J10	32-bit PCI slots	PC1 - PC4
Floppy drive interface	J11	Cache slot	SL1

USER CONFIGURABLE SETTINGS		
Function	Label	Position
í SMC chip enabled	J24	Open
SMC chip disabled	J24	Closed
í Factory configured - do not alter	JA1	Unidentified
Flash BIOS voltage select 12v	JP6	Pins 2 & 3 closed
Flash BIOS voltage select 5v	JP6	Pins 1 & 2 closed
í Flash BIOS normal operation	JP8	Pins 1 & 2 closed
Flash BIOS boot block enabled	JP8	Pins 2 & 3 closed
í Clock rate set as AT CLOCK	JP15	Pins 1 & 2 closed
Clock rate set as 12MHz	JP15	Pins 2 & 3 closed

DRAM CONFIGURATION		
Size	Bank 0	Bank 1
8MB	(2) 1M x 36	None
16MB	(2) 1M x 36	(2) 1M x 36
16MB	(2) 2M x 36	None
24MB	(2) 2M x 36	(2) 1M x 36
32MB	(2) 2M x 36	(2) 2M x 36
32MB	(2) 4M x 36	None
40MB	(2) 4M x 36	(2) 1M x 36
48MB	(2) 2M x 36	(2) 4M x 36
64MB	(2) 4M x 36	(2) 4M x 36
64MB	(2) 8M x 36	None
72MB	(2) 8M x 36	(2) 1M x 36
80MB	(2) 8M x 36	(2) 2M x 36
96MB	(2) 4M x 36	(2) 8M x 36
96MB	(2) 8M x 36	(2) 4M x 36
128MB	(2) 8M x 36	(2) 8M x 36
256MB	(2) 16M x 36	(2) 16M x 36
512MB	(2) 32M x 36	(2) 32M x 36

Note: Board accepts EDO memory. Board also accepts x 32 SIMMs. Banks are interchangeable.

Continued on next page. ...

# CALIFORNIA GRAPHICS & PERIPHERALS, INC.

## SUNRAY II PRO EVOLUTION

... continued from previous page

DRAM REFRESH RATE CONFIGURATION		
Refresh rate	JP12	
60MHz	Open	
66MHz	Closed	

CACHE CONFIGURATION			
Size	Bank 0	TAG	SL1
256KB (A)	(2) 32K x 32	(1) 32K x 8	Not installed
256KB (B)	None	(1) 32K x 8	256KB module installed
512KB (A)	(2) 32K x 32	(1) 32K x 8	256KB module installed
512KB (B)	(2) 64K x 32	(1) 32K x 8	Not installed
512KB (C)	None	(1) 32K x 8	512KB module installed

CACHE JUMPER CONFIGURATION		
Size	JP10	JP11
256KB (A)	Pins 1 & 2 closed	Pins 1 & 2 closed
256KB (B)	Pins 1 & 2 closed	Pins 2 & 3 closed
512KB (A)	Pins 1 & 2 closed	Pins 1 & 2 closed
512KB (B)	Pins 2 & 3 closed	Pins 1 & 2 closed
512KB (C)	Pins 1 & 2 closed	Pins 2 & 3 closed

CPU SPEED SELECTION (CYRIX)		
CPU speed	Clock speed	JP1
100MHz	66MHz	Pins 10 & 23 closed
120MHz	60MHz	Pins 4 & 17 closed
133MHz	66MHz	Pins 5 & 18 closed

CPU SPEED SELECTION (INTEL)		
CPU speed	Clock speed	JP1
75MHz	50MHz	Pins 1 & 14 closed
90MHz	60MHz	Pins 2 & 15 closed
100MHz	66MHz	Pins 3 & 16 closed
120MHz	60MHz	Pins 4 & 17 closed
133MHz	66MHz	Pins 5 & 18 closed
150MHz	60MHz	Pins 6 & 19 closed
166MHz	66MHz	Pins 7 & 20 closed
180MHz	60MHz	Pins 8 & 21 closed
200MHz	66MHz	Pins 9 & 22 closed

CPU TYPE SELECTION				
Type	JP3A	JP3B	JP3C	JP3D
CX M1	1 & 2	1 & 2	1 & 2	1 & 2
P54C/P54CS/P54CT/P54CTB	1 & 2	1 & 2	1 & 2	1 & 2
P55C	2 & 3	2 & 3	2 & 3	2 & 3

Note: Pins designated should be in the closed position.

