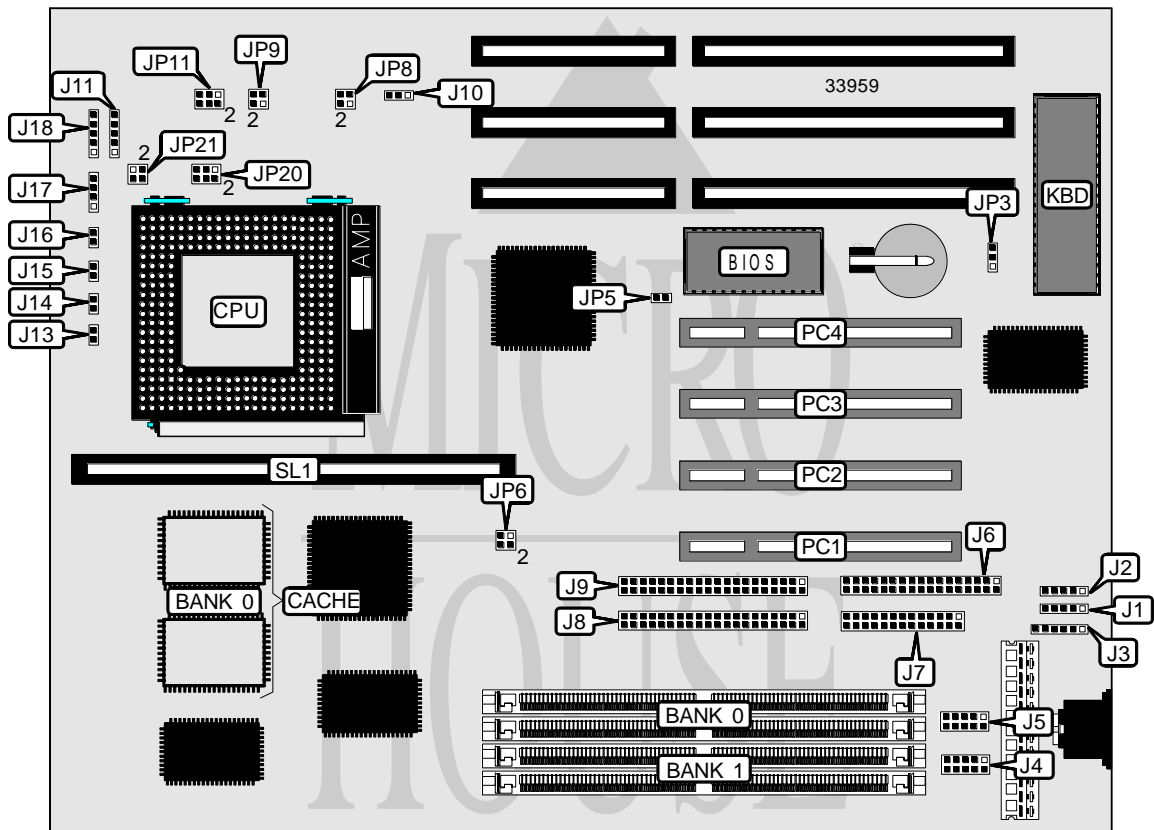


DIAMOND FLOWER, INC. G5861PV (REV. C)

| | |
|-------------------------------|---|
| Processor | CX M1/AM K5/Pentium |
| Processor Speed | 75/90/100/120/133/150/166/200MHz |
| Chip Set | Intel |
| Video Chip Set | None |
| Maximum Onboard Memory | 128MB (EDO supported) |
| Maximum Video Memory | None |
| Cache | 256/512KB |
| BIOS | Award |
| Dimensions | 250mm x 220mm |
| I/O Options | 32-bit PCI slots (4), floppy drive interface, green PC connector, IDE interfaces (2), parallel port, PS/2 mouse interface, serial ports (2), cache slot, IR connector, USB connectors (2) |
| NPU Options | None |



Continued on next page. . .

DIAMOND FLOWER, INC.

G5861PV (REV. C)

... continued from previous page

| CONNECTIONS | | | |
|------------------------|----------|---------------------|-----------|
| Purpose | Location | Purpose | Location |
| USB connector 1 | J1 | IR connector | J11 |
| USB connector 2 | J2 | IDE interface LED | J13 |
| PS/2 mouse interface | J3 | Green PC LED | J14 |
| Serial port 1 | J4 | Green PC connector | J15 |
| Serial port 2 | J5 | Reset switch | J16 |
| Floppy drive interface | J6 | Speaker | J17 |
| Parallel port | J7 | Power LED & keylock | J18 |
| IDE interface 1 | J8 | 32-bit PCI slots | PC1 – PC4 |
| IDE interface 2 | J9 | Cache slot | SL1 |
| Chassis fan power | J10 | | |

| USER CONFIGURABLE SETTINGS | | |
|--------------------------------|-------|-------------------|
| Function | Label | Position |
| ? Monitor type select color | JP3 | Pins 1 & 2 closed |
| Monitor type select monochrome | JP3 | Pins 2 & 3 closed |
| ? CMOS memory normal operation | JP5 | Open |
| CMOS memory clear | JP5 | Closed |

| DRAM CONFIGURATION | | | |
|--------------------|-------------|-------------|--------|
| Size | Bank 0 | Bank 1 | Bank 2 |
| 8MB | (2) 1M x 36 | None | None |
| 16MB | (2) 2M x 36 | None | None |
| 16MB | (2) 1M x 36 | (2) 1M x 36 | None |
| 24MB | (2) 2M x 36 | (2) 1M x 36 | None |
| 32MB | (2) 4M x 36 | None | None |
| 32MB | (2) 2M x 36 | (2) 2M x 36 | None |
| 40MB | (2) 4M x 36 | (2) 1M x 36 | None |
| 48MB | (2) 4M x 36 | (2) 2M x 36 | None |
| 64MB | (2) 8M x 36 | None | None |
| 64MB | (2) 4M x 36 | (2) 4M x 36 | None |
| 72MB | (2) 8M x 36 | (2) 1M x 36 | None |
| 80MB | (2) 8M x 36 | (2) 2M x 36 | None |
| 96MB | (2) 8M x 36 | (2) 4M x 36 | None |
| 128MB | (2) 8M x 36 | (2) 8M x 36 | None |

Note: Board accepts EDO memory. Board also accepts x 32 SIMMs. Banks are interchangeable.

| CACHE CONFIGURATION | | |
|---------------------|--------------|------------------------|
| Size | Bank 0 | SL1 |
| 256KB | (2) 32K x 32 | None |
| 512KB | (2) 32K x 32 | 256KB module installed |
| 512KB | (2) 64K x 32 | Not installed |

Continued on next page. . .

DIAMOND FLOWER, INC.

G5861PV (REV. C)

... continued from previous page

| CPU SPEED SELECTION (CYRIX) | | | | |
|-----------------------------|-------------|------------|--------------|-------|
| CPU speed | Clock speed | Multiplier | JP6 | JP8 |
| 120MHz | 50MHz | 2x | 1 & 2, 3 & 4 | 1 & 2 |
| 133MHz | 55MHz | 2x | Open | 1 & 2 |
| 150MHz | 60MHz | 2x | 1 & 2 | 1 & 2 |
| 166MHz | 66MHz | 2x | 3 & 4 | 1 & 2 |

Note: Pins designated should be in the closed position.

| CPU SPEED SELECTION (AMD) | | | | |
|---------------------------|-------------|------------|--------------|------|
| CPU speed | Clock speed | Multiplier | JP6 | JP8 |
| 75MHz | 50MHz | 1.5x | 1 & 2, 3 & 4 | Open |
| 90MHz | 60MHz | 1.5x | 1 & 2 | Open |
| 100MHz | 66MHz | 1.5x | 3 & 4 | Open |

Note: Pins designated should be in the closed position.

| CPU SPEED SELECTION (INTEL) | | | | |
|-----------------------------|-------------|------------|--------------|--------------|
| CPU speed | Clock speed | Multiplier | JP6 | JP8 |
| 75MHz | 50MHz | 1.5x | 1 & 2, 3 & 4 | Open |
| 90MHz | 60MHz | 1.5x | 1 & 2 | Open |
| 100MHz | 66MHz | 1.5x | 3 & 4 | Open |
| 120MHz | 60MHz | 2x | 1 & 2 | 1 & 2 |
| 133MHz | 66MHz | 2x | 3 & 4 | 1 & 2 |
| 150MHz | 60MHz | 2.5x | 1 & 2 | 1 & 2, 3 & 4 |
| 166MHz | 66MHz | 2.5x | 3 & 4 | 1 & 2, 3 & 4 |
| 200MHz | 66MHz | 3x | 3 & 4 | 3 & 4 |

Note: Pins designated should be in the closed position.

| CPU VOLTAGE SELECTION | | | | |
|-----------------------|-------|--------------|-------|--------------|
| Voltage | JP9 | JP11 | JP20 | JP21 |
| 2.5v | 1 & 2 | 1 & 3, 2 & 4 | 5 & 6 | Open |
| 2.8v | 1 & 2 | 1 & 3, 2 & 4 | 3 & 4 | Open |
| 2.9v | 1 & 2 | 1 & 3, 2 & 4 | 1 & 2 | Open |
| 3.3v | 1 & 2 | 3 & 5, 4 & 6 | 3 & 4 | 1 & 2, 3 & 4 |
| 3.5v | 3 & 4 | 3 & 5, 4 & 6 | 3 & 4 | 1 & 2, 3 & 4 |

Note: Pins designated should be in the closed position.