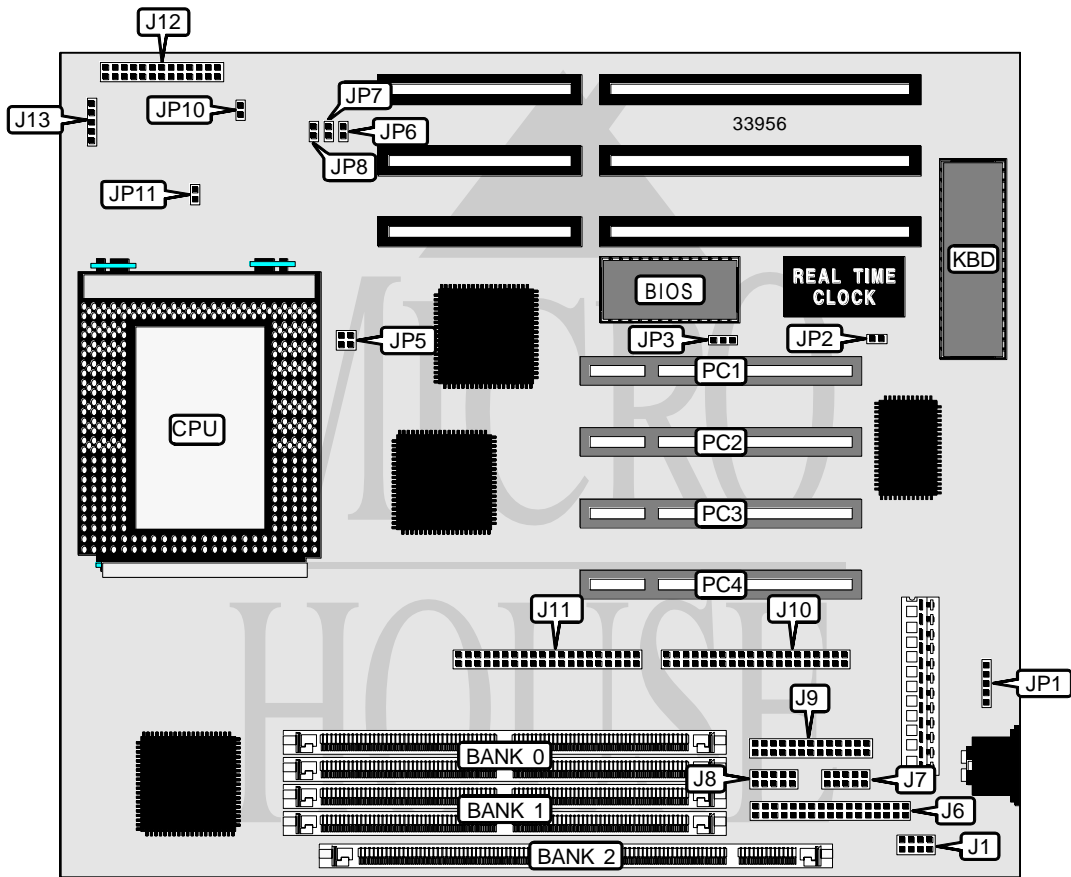


BIOSTAR MICROTECH INTERNATIONAL CORPORATION

MB-8600TTC A1

Processor	Pentium Pro
Processor Speed	133/150/166/180/200/233MHz
Chip Set	Unidentified
Video Chip Set	None
Maximum Onboard Memory	128MB (EDO supported)
Maximum Video Memory	None
Cache	256/512KB (located on Pentium Pro CPU)
BIOS	Unidentified
Dimensions	254mm x 218mm
I/O Options	32-bit PCI slots (4), floppy drive interface, green PC connector, IDE interfaces (2), parallel port, PS/2 mouse interface, serial ports (2), IR connector, USB connector
NPU Options	None



Continued on next page. . .

BIOSTAR MICROTECH INTERNATIONAL CORPORATION

MB-8600TTC A1

... continued from previous page

CONNECTIONS			
Purpose	Location	Purpose	Location
USB connector	J1	Turbo LED	J12 pins 10 & 11
Floppy drive interface	J6	Reset switch	J12 pins 12 & 13
Serial port 1	J7	Green PC connector	J12 pins 17 & 18
Serial port 2	J8	IDE interface LED	J12 pins 20 & 21
Parallel port	J9	+5v ground	J12 pins 25 & 26
IDE interface 1	J10	IR connector	J13
IDE interface 2	J11	PS/2 mouse interface	JP1
Speaker	J12 pins 1 - 4	Chassis fan power	JP11
Power LED & keylock	J12 pins 5 - 9	32-bit PCI slots	PC1 – PC4

USER CONFIGURABLE SETTINGS		
Function	Label	Position
? CMOS memory normal operation	JP2	Open
CMOS memory clear	JP2	Closed
? Flash BIOS voltage select 12v	JP3	Pins 1 & 2 closed
Flash BIOS voltage select 5v	JP3	Pins 2 & 3 closed
EPROM installed	JP3	Open

DIMM/DRAM CONFIGURATION			
Size	Bank 0	Bank 1	Bank 2
8MB	(2) 1M x 36	None	None
8MB	None	None	(1) 1M x 64
16MB	(2) 2M x 36	None	None
16MB	(2) 1M x 36	(2) 1M x 36	None
16MB	None	None	(1) 2M x 64
16MB	(2) 1M x 36	None	(1) 1M x 64
24MB	(2) 2M x 36	(2) 1M x 36	None
24MB	(2) 1M x 36	None	(1) 2M x 64
24MB	(2) 2M x 36	None	(1) 1M x 64
32MB	(2) 4M x 36	None	None
32MB	(2) 2M x 36	(2) 2M x 36	None
32MB	None	None	(1) 4M x 64
32MB	(2) 2M x 36	None	(1) 2M x 64
40MB	(2) 4M x 36	(2) 1M x 36	None
40MB	(2) 1M x 36	None	(1) 4M x 64
40MB	(2) 4M x 36	None	(1) 1M x 64
48MB	(2) 4M x 36	(2) 2M x 36	None
48MB	(2) 2M x 36	None	(1) 4M x 64
48MB	(2) 4M x 36	None	(1) 2M x 64
64MB	(2) 8M x 36	None	None
64MB	(2) 4M x 36	(2) 4M x 36	None

Continued on next page...

BIOSTAR MICROTECH INTERNATIONAL CORPORATION

MB-8600TTC A1

... continued from previous page

DIMM/DRAM CONFIGURATION (CON'T)			
Size	Bank 0	Bank 1	Bank 2
64MB	None	None	(1) 8M x 64
64MB	(2) 4M x 36	None	(1) 4M x 64
72MB	(2) 8M x 36	(2) 1M x 36	None
72MB	(2) 1M x 36	None	(1) 8M x 64
72MB	(2) 8M x 36	None	(1) 1M x 64
80MB	(2) 8M x 36	(2) 2M x 36	None
80MB	(2) 2M x 36	None	(1) 8M x 64
80MB	(2) 8M x 36	None	(1) 2M x 64
96MB	(2) 8M x 36	(2) 4M x 36	None
96MB	(2) 4M x 36	None	(1) 8M x 64
96MB	(2) 8M x 36	None	(1) 4M x 64
128MB	(2) 8M x 36	(2) 8M x 36	None
128MB	(2) 8M x 36	None	(1) 8M x 64

Note: Board accepts EDO memory.

CACHE CONFIGURATION
Note: 256KB/512KB cache is located on the Pentium Pro CPU.

CPU SPEED SELECTION						
CPU speed	Clock speed	Multiplier	JP5	JP6	JP7	JP8
133MHz	66MHz	2x	3 & 4	Closed	Closed	Closed
150MHz	60MHz	2.5x	1 & 2	Closed	Closed	Open
166MHz	66MHz	2.5x	3 & 4	Closed	Closed	Open
180MHz	60MHz	3x	1 & 2	Closed	Open	Closed
200MHz	66MHz	3x	3 & 4	Closed	Open	Closed
233MHz	66MHz	3.5x	3 & 4	Closed	Open	Open

Note: Pins designated should be in the closed position.

CPU VOLTAGE SELECTION	
Voltage	JP10
2.9v	Open
3.1v	Closed