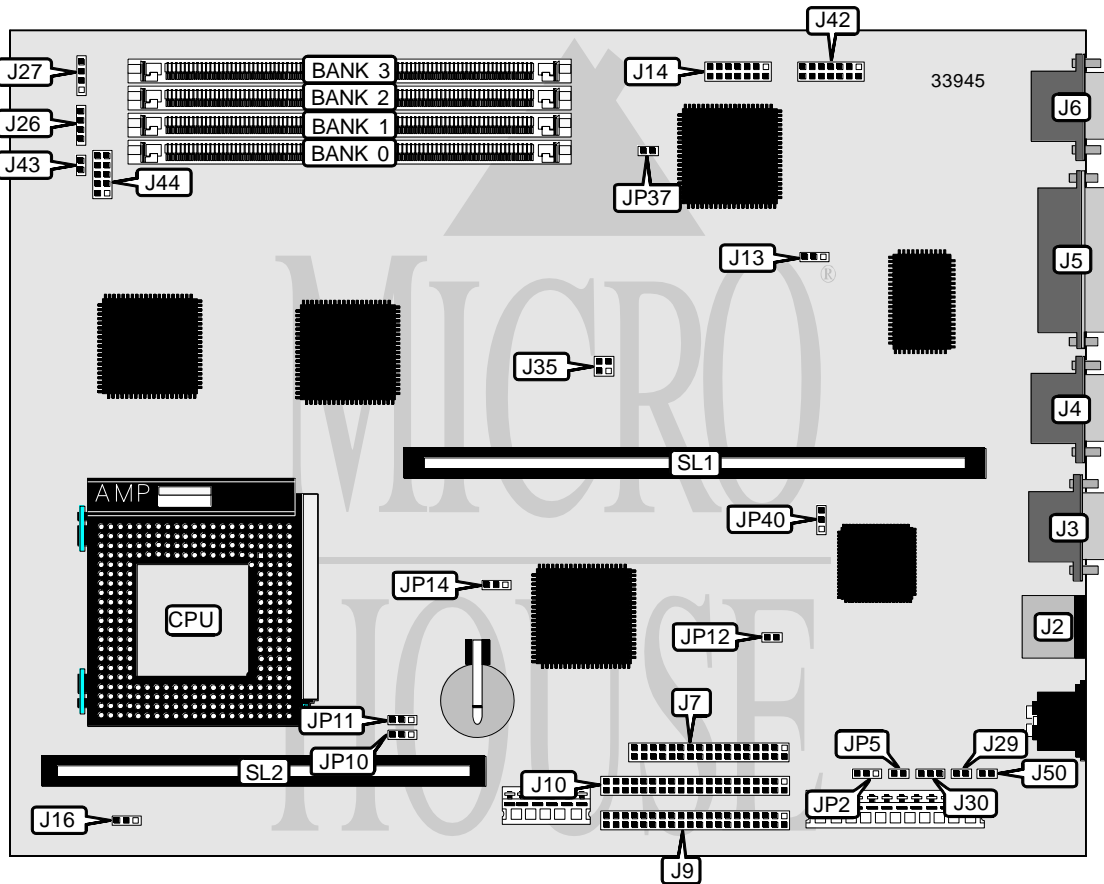


IBM CORPORATION

APTIVA 2134/2176 A-1

Processor	Pentium
Processor Speed	100/120/133/150/166/200MHz
Chip Set	Unidentified
Video Chip Set	None
Maximum Onboard Memory	128MB
Maximum Video Memory	None
Cache	256/512KB
BIOS	Unidentified
Dimensions	330mm x 218mm
I/O Options	Floppy drive interface, IDE interfaces (2), parallel port, PS/2 mouse port, serial ports (2), VESA video feature connector, VGA port, riser slot, cache slot, feature connector, VGA interface, power supply connectors (2)
NPU Options	None



Continued on next page. . .

IBM CORPORATION

APTIVA 2134/2176 A-1

... continued from previous page

CONNECTIONS			
Purpose	Location	Purpose	Location
PS/2 mouse port	J2	Speaker	J27
Serial port 1	J3	Power supply connector	J29
Serial port 2	J4	Power supply connector	J30
Parallel port	J5	VGA interface	J42
VGA port	J6	Chassis fan power	J43
Floppy drive interface	J7	Feature connector	J44
IDE interface 1	J9	External speaker connector	J50
IDE interface 2	J10	Wake up on ring connector	JP5
VESA video feature connector	J14	Riser slot	SL1
LED connector	J26	Cache slot	SL2

USER CONFIGURABLE SETTINGS		
Function	Label	Position
Flash BIOS normal operation	J13	Pins 1 & 2 closed
Flash BIOS recovery mode	J13	Pins 2 & 3 closed
í Smart energy system enabled	JP2	Pins 2 & 3 closed
Smart energy system disabled	JP2	Pins 1 & 2 closed
PS/2 mouse enabled	JP12	Pins 1 & 2 closed
PS/2 mouse disabled	JP12	Pins 2 & 3 closed
í CMOS memory normal operation	JP14	Pins 1 & 2 closed
CMOS memory clear	JP14	Pins 2 & 3 closed
On board video enabled	JP37	Closed
On board video disabled	JP37	Open
PS/2 mouse & keyboard enabled	JP40	Pins 1 & 2 closed
PS/2 mouse & keyboard disabled	JP40	Pins 2 & 3 closed

DRAM CONFIGURATION				
Size	Bank 0	Bank 1	Bank 2	Bank 3
8MB	(1) 2M x 36	None	None	None
8MB	(1) 1M x 36	(1) 1M x 36	None	None
8MB	None	None	(1) 1M x 36	(1) 1M x 36
12MB	(1) 1M x 36	None	(1) 1M x 36	(1) 1M x 36
16MB	(1) 4M x 36	None	None	None
16MB	(1) 2M x 36	(1) 2M x 36	None	None
16MB	(1) 1M x 36	(1) 1M x 36	(1) 1M x 36	(1) 1M x 36
16MB	(1) 2M x 36	None	(1) 1M x 36	(1) 1M x 36
16MB	None	None	(1) 2M x 36	(1) 2M x 36
20MB	(1) 1M x 36	None	(1) 2M x 36	(1) 2M x 36
24MB	(1) 2M x 36	(1) 2M x 36	(1) 1M x 36	(1) 1M x 36
24MB	(1) 1M x 36	(1) 1M x 36	(1) 2M x 36	(1) 2M x 36
24MB	(1) 4M x 36	None	(1) 1M x 36	(1) 1M x 36
24MB	(1) 2M x 36	None	(1) 2M x 36	(1) 2M x 36

Continued on next page. ...

IBM CORPORATION

APTIVA 2134/2176 A-1

... continued from previous page

DRAM CONFIGURATION (CON'T)				
Size	Bank 0	Bank 1	Bank 2	Bank 3
32MB	(1) 8M x 36	None	None	None
32MB	(1) 4M x 36	(1) 4M x 36	None	None
32MB	(1) 2M x 36	(1) 2M x 36	(1) 2M x 36	(1) 2M x 36
32MB	(1) 4M x 36	None	(1) 2M x 36	(1) 2M x 36
32MB	None	None	(1) 4M x 36	(1) 4M x 36
36MB	(1) 1M x 36	None	(1) 4M x 36	(1) 4M x 36
40MB	(1) 4M x 36	(1) 4M x 36	(1) 1M x 36	(1) 1M x 36
40MB	(1) 1M x 36	(1) 1M x 36	(1) 4M x 36	(1) 4M x 36
40MB	(1) 8M x 36	None	(1) 1M x 36	(1) 1M x 36
40MB	(1) 2M x 36	None	(1) 4M x 36	(1) 4M x 36
48MB	(1) 4M x 36	(1) 4M x 36	(1) 2M x 36	(1) 2M x 36
48MB	(1) 2M x 36	(1) 2M x 36	(1) 4M x 36	(1) 4M x 36
48MB	(1) 8M x 36	None	(1) 2M x 36	(1) 2M x 36
48MB	(1) 4M x 36	None	(1) 4M x 36	(1) 4M x 36
64MB	(1) 8M x 36	(1) 8M x 36	None	None
64MB	(1) 4M x 36	(1) 4M x 36	(1) 4M x 36	(1) 4M x 36
64MB	(1) 8M x 36	None	(1) 4M x 36	(1) 4M x 36
64MB	None	None	(1) 8M x 36	(1) 8M x 36
68MB	(1) 1M x 36	None	(1) 8M x 36	(1) 8M x 36
72MB	(1) 8M x 36	(1) 8M x 36	(1) 1M x 36	(1) 1M x 36
72MB	(1) 1M x 36	(1) 1M x 36	(1) 8M x 36	(1) 8M x 36
72MB	(1) 2M x 36	None	(1) 8M x 36	(1) 8M x 36
80MB	(1) 8M x 36	(1) 8M x 36	(1) 2M x 36	(1) 2M x 36
80MB	(1) 2M x 36	(1) 2M x 36	(1) 8M x 36	(1) 8M x 36
80MB	(1) 4M x 36	None	(1) 8M x 36	(1) 8M x 36
96MB	(1) 8M x 36	(1) 8M x 36	(1) 4M x 36	(1) 4M x 36
96MB	(1) 4M x 36	(1) 4M x 36	(1) 8M x 36	(1) 8M x 36
96MB	(1) 8M x 36	None	(1) 8M x 36	(1) 8M x 36
128MB	(1) 8M x 36	(1) 8M x 36	(1) 8M x 36	(1) 8M x 36

CACHE CONFIGURATION	
Size	SL1
256KB	256KB module installed
512KB	512KB module installed

CACHE JUMPER CONFIGURATION	
Size	J16
256KB	Pins 2 & 3 closed
512KB	Pins 1 & 2 closed

Continued on next page. . .

IBM CORPORATION

APTIVA 2134/2176 A-1

... continued from previous page

CPU SPEED SELECTION	
CPU clock speed	JP35
50MHz	Pins 1 & 2 closed
55MHz	Open
60MHz	Pins 3 & 4 closed
66MHz	Pins 1 & 2, 3 & 4 closed

CPU MULTIPLIER SELECTION			
Multiplier	Clock speed	JP10	JP11
1/3	50MHz	Pins 2 & 3 closed	Pins 1 & 2 closed
2/5	60MHz	Pins 1 & 2 closed	Pins 1 & 2 closed
1/2	66MHz	Pins 1 & 2 closed	Pins 2 & 3 closed
2/3	60MHz	Pins 2 & 3 closed	Pins 2 & 3 closed