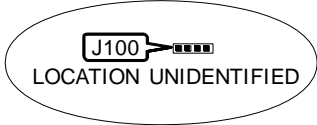
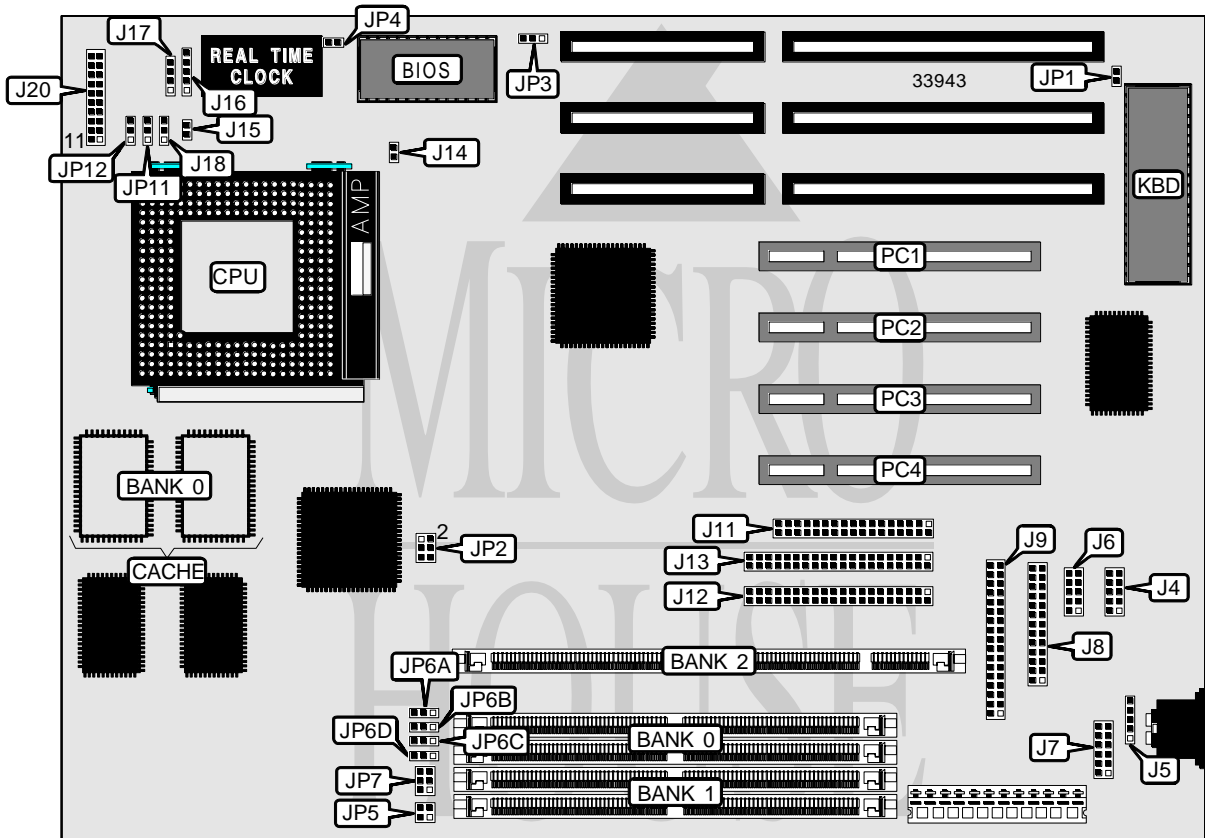


ELITEGROUP COMPUTER SYSTEMS, INC.

P5VX-BE (VER. 1.1)

Processor	CX M1/AM K5/Pentium
Processor Speed	75/90/100/120/133/150/166/200MHz
Chip Set	Intel
Video Chip Set	None
Maximum Onboard Memory	128MB (EDO supported)
Maximum Video Memory	None
Cache	256/512KB
BIOS	Award
Dimensions	330mm x 218mm
I/O Options	32-bit PCI slots (4), CD-ROM connector, floppy drive interface, green PC connector, IDE interfaces (2), parallel port, PS/2 mouse interface, serial ports (2), IR connectors (2), USB connector, audio connector
NPU Options	None



Continued on next page. . .

ELITEGROUP COMPUTER SYSTEMS, INC.
P5VX-BE (VER. 1.1)

... continued from previous page

CONNECTIONS			
Purpose	Location	Purpose	Location
Serial port 2	J4	IR connector	J16
PS/2 mouse interface	J5	IR connector (IBM)	J17
Serial port 1	J6	Chassis fan power	J18
USB connector	J7	Turbo LED	J20 pins 2 & 3
Parallel port	J8	Green PC connector	J20 pins 4 & 5
Audio connector (optional)	J9	Reset switch	J20 pins 9 & 10
Floppy drive interface	J11	Power LED & keylock	J20 pins 11 - 15
IDE interface 2	J12	Speaker	J20 pins 17 - 20
IDE interface 1	J13	CD ROM connector	J100
Green PC LED	J14	32-bit VESA local bus slots	PC1 - PC4
IDE interface LED	J15		

USER CONFIGURABLE SETTINGS		
Function	Label	Position
Password disabled	JP1	Open
Password enabled	JP1	Closed
í Factory configured - do not alter	JP3	Unidentified
í CMOS memory normal operation	JP4	Open
CMOS memory clear	JP4	Closed

DIMM/DRAM CONFIGURATION			
Size	Bank 0	Bank 1	Bank 2
4MB	(2) 512K x 36	None	None
8MB	(2) 1M x 36	None	None
8MB	(2) 512K x 36	(2) 512K x 36	None
8MB	None	None	(1) 1M x 64
12MB	(2) 1M x 36	(2) 512K x 36	None
16MB	(2) 2M x 36	None	None
16MB	(2) 1M x 36	(2) 1M x 36	None
16MB	None	None	(1) 2M x 64
20MB	(2) 2M x 36	(2) 512K x 36	None
24MB	(2) 2M x 36	(2) 1M x 36	None
32MB	(2) 4M x 36	None	None
32MB	(2) 2M x 36	(2) 2M x 36	None
32MB	None	None	(1) 4M x 64
36MB	(2) 4M x 36	(2) 512K x 36	None
40MB	(2) 4M x 36	(2) 1M x 36	None
48MB	(2) 4M x 36	(2) 2M x 36	None
64MB	(2) 8M x 36	None	None
64MB	(2) 4M x 36	(2) 4M x 36	None

Continued on next page. . .

ELITEGROUP COMPUTER SYSTEMS, INC.

P5VX-BE (VER. 1.1)

... continued from previous page

DIMM/DRAM CONFIGURATION (CON'T)			
Size	Bank 0	Bank 1	Bank 2
68MB	(2) 8M x 36	(2) 512K x 36	None
72MB	(2) 8M x 36	(2) 1M x 36	None
80MB	(2) 8M x 36	(2) 2M x 36	None
96MB	(2) 8M x 36	(2) 4M x 36	None
128MB	(2) 8M x 36	(2) 8M x 36	None

Note: Board accepts EDO memory. Board also accepts x 32 SIMMs.

CACHE CONFIGURATION	
Size	Bank 0
256KB	(2) 32K x 32
512KB	(2) 64K x 32

CPU SPEED SELECTION (CYRIX)					
CPU speed	Clock speed	Multiplier	JP2	JP11	JP12
120MHz	50MHz	2x	1 & 2, 3 & 4, 5 & 6	2 & 3	1 & 2
133MHz	55MHz	2x	1 & 2, 3 & 4	2 & 3	1 & 2
150MHz	60MHz	2x	3 & 4, 5 & 6	2 & 3	1 & 2
166MHz	66MHz	2x	1 & 2, 5 & 6	2 & 3	1 & 2

Note: Pins designated should be in the closed position.

CPU SPEED SELECTION (AMD)					
CPU speed	Clock speed	Multiplier	JP2	JP11	JP12
75MHz	50MHz	1.5x	1 & 2, 3 & 4, 5 & 6	1 & 2	1 & 2
90MHz	60MHz	1.5x	3 & 4, 5 & 6	1 & 2	1 & 2
100MHz	66MHz	1.5x	1 & 2, 5 & 6	1 & 2	1 & 2
120MHz	60MHz	1.5x	3 & 4, 5 & 6	1 & 2	1 & 2
133MHz	66MHz	1.5x	1 & 2, 5 & 6	1 & 2	1 & 2

Note: Pins designated should be in the closed position.

CPU SPEED SELECTION (INTEL)					
CPU speed	Clock speed	Multiplier	JP2	JP11	JP12
75MHz	50MHz	1.5x	1 & 2, 3 & 4, 5 & 6	1 & 2	1 & 2
90MHz	60MHz	1.5x	3 & 4, 5 & 6	1 & 2	1 & 2
100MHz	66MHz	1.5x	1 & 2, 5 & 6	1 & 2	1 & 2
120MHz	60MHz	2x	3 & 4, 5 & 6	2 & 3	1 & 2
133MHz	66MHz	2x	1 & 2, 5 & 6	2 & 3	1 & 2
150MHz	60MHz	2.5x	3 & 4, 5 & 6	2 & 3	2 & 3
166MHz	66MHz	2.5x	1 & 2, 5 & 6	2 & 3	2 & 3
180MHz	60MHz	3x	1 & 2, 5 & 6	2 & 3	2 & 3
200MHz	66MHz	3x	1 & 2, 5 & 6	1 & 2	2 & 3

Note: Pins designated should be in the closed position.

Continued on next page...

ELITEGROUP COMPUTER SYSTEMS, INC.
P5VX-BE (VER. 1.1)

... continued from previous page

CPU VOLTAGE SELECTION (SINGLE)					
Voltage	JP5	JP6A	JP6B	JP6C	JP6D
3.3v	1 & 2	2 & 3	2 & 3	2 & 3	2 & 3
3.525v	3 & 4	2 & 3	2 & 3	2 & 3	2 & 3
Note: Pins designated should be in the closed position.					

CPU VOLTAGE SELECTION (DUAL)							
Voltage	V core	JP5	JP6A	JP6B	JP6C	JP6D	JP7
3.3v	2.5v	1 & 2	1 & 2	1 & 2	1 & 2	1 & 2	1 & 2
3.3v	2.8v	1 & 2	1 & 2	1 & 2	1 & 2	1 & 2	3 & 4
3.3v	2.9v	1 & 2	1 & 2	1 & 2	1 & 2	1 & 2	5 & 6
3.525v	2.5v	3 & 4	1 & 2	1 & 2	1 & 2	1 & 2	1 & 2
3.525v	2.8v	3 & 4	1 & 2	1 & 2	1 & 2	1 & 2	3 & 4
3.525v	2.9v	3 & 4	1 & 2	1 & 2	1 & 2	1 & 2	5 & 6
Note: Pins designated should be in the closed position.							