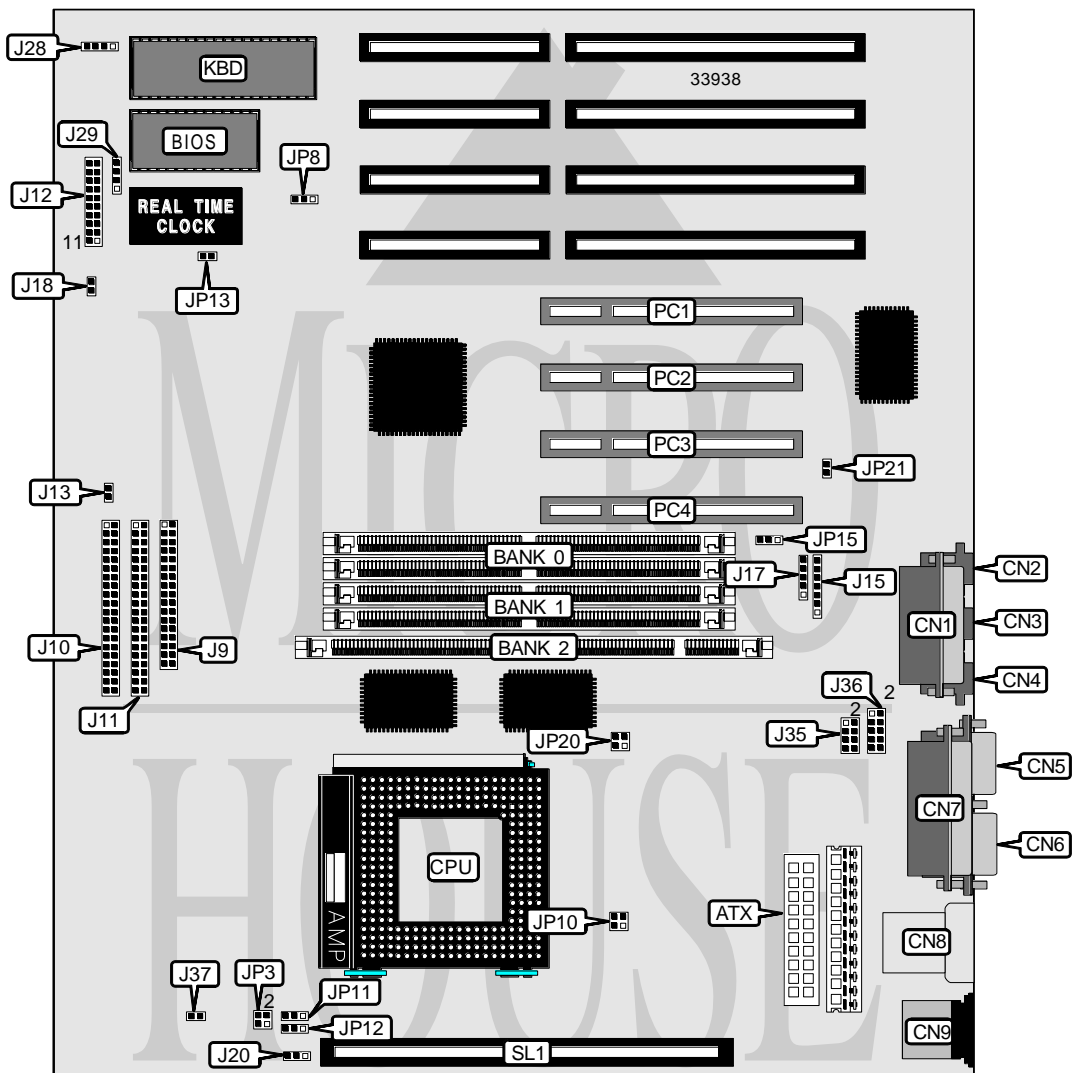


# ELITEGROUP COMPUTER SYSTEMS, INC.

## P5VX-A (VER 1.1 PCB 1.0)

<b>Processor</b>	Pentium
<b>Processor Speed</b>	75/90/100/120/133/150/166/200MHz
<b>Chip Set</b>	Intel
<b>Video Chip Set</b>	None
<b>Maximum Onboard Memory</b>	128MB (EDO supported)
<b>Maximum Video Memory</b>	None
<b>Cache</b>	256/512KB
<b>BIOS</b>	Unidentified
<b>Dimensions</b>	330mm x 218mm
<b>I/O Options</b>	32-bit PCI slots (4), floppy drive interface, game port, green PC connector, IDE interfaces (2), parallel port, PS/2 mouse port, serial ports (2), cache slot, IR connectors (2), USB connectors (2), ATX power connector, microphone port, line in port, line out port, wavetable connector, modem/phone speaker connector, soft off power supply
<b>NPU Options</b>	None



*Continued on next page. . .*

# ELITEGROUP COMPUTER SYSTEMS, INC.

## P5VX-A (VER 1.1 PCB 1.0)

... continued from previous page

CONNECTIONS			
Purpose	Location	Purpose	Location
ATX power connector	ATX	Reset switch	J12 pins 9 & 10
Game port	CN1	Power LED & keylock	J12 pins 11 - 15
Microphone port	CN2	Speaker	J12 pins 17 - 20
Line in port	CN3	IDE interface LED	J13
Line out port	CN4	IR connector (fast)	J15
Serial port 1	CN5	IR connector	J17
Serial port 2	CN6	Green PC LED	J18
Parallel port	CN7	Chassis fan power	J20
USB connectors	CN8	CD-ROM connector	J28
PS/2 mouse port	CN9	Volume control connector	J29
Floppy drive interface	J9	Wavetable connector	J35
IDE interface 1	J10	Modem/phone speaker connector	J36
IDE interface 2	J11	Soft off power supply	J37
Power on LED	J12 pins 2 & 3	32-bit PCI slots	PC1 - PC4
Green PC connector	J12 pins 4 & 5	Cache slot	SL1

USER CONFIGURABLE SETTINGS		
Function	Label	Position
í Flash BIOS voltage select 5v	JP8	Pins 2 & 3 closed
Flash BIOS voltage select 12v	JP8	Pins 1 & 2 closed
í CMOS memory normal operation	JP13	Open
CMOS memory clear	JP13	Closed
í Super I/O enabled	JP15	Pins 1 & 2 closed
Super I/O disabled	JP15	Pins 2 & 3 closed
í 3D sound enabled	JP21	Closed
3D sound disabled	JP21	Open

DIMM/DRAM CONFIGURATION			
Size	Bank 0	Bank 1	Bank 2
8MB	(2) 1M x 36	None	None
8MB	None	None	(1) 1M x 64
16MB	(2) 2M x 36	None	None
16MB	(2) 1M x 36	(2) 1M x 36	None
16MB	None	None	(1) 2M x 64
16MB	(2) 1M x 36	None	(1) 1M x 64
24MB	(2) 2M x 36	(2) 1M x 36	None
24MB	(2) 2M x 36	None	(1) 1M x 64
24MB	(2) 1M x 36	None	(1) 2M x 64
32MB	(2) 4M x 36	None	None
32MB	(2) 2M x 36	(2) 2M x 36	None
32MB	None	None	(1) 4M x 64
32MB	(2) 2M x 36	None	(1) 2M x 64

Continued on next page. ...

# ELITEGROUP COMPUTER SYSTEMS, INC.

## P5VX-A (VER 1.1 PCB 1.0)

... continued from previous page

DIMM/DRAM CONFIGURATION (CON'T)			
Size	Bank 0	Bank 1	Bank 2
40MB	(2) 4M x 36	(2) 1M x 36	None
40MB	(2) 4M x 36	None	(1) 1M x 64
40MB	(2) 1M x 36	None	(1) 4M x 64
48MB	(2) 4M x 36	(2) 2M x 36	None
48MB	(2) 4M x 36	None	(1) 2M x 64
48MB	(2) 2M x 36	None	(1) 4M x 64
64MB	(2) 8M x 36	None	None
64MB	(2) 4M x 36	(2) 4M x 36	None
64MB	None	None	(1) 8M x 64
64MB	(2) 4M x 36	None	(1) 4M x 64
72MB	(2) 8M x 36	(2) 1M x 36	None
72MB	(2) 8M x 36	None	(1) 1M x 64
72MB	(2) 1M x 36	None	(1) 8M x 64
80MB	(2) 8M x 36	(2) 2M x 36	None
80MB	(2) 8M x 36	None	(1) 2M x 64
80MB	(2) 2M x 36	None	(1) 8M x 64
96MB	(2) 8M x 36	(2) 4M x 36	None
96MB	(2) 4M x 36	None	(1) 8M x 64
96MB	(2) 8M x 36	None	(1) 4M x 64
128MB	(2) 8M x 36	(2) 8M x 36	None
128MB	(2) 8M x 36	None	(1) 8M x 64

Note: Board accepts EDO memory.

CACHE CONFIGURATION	
Size	SL1
256KB	256KB module installed
512KB	512KB module installed

CPU SPEED SELECTION					
CPU speed	Clock speed	Multiplier	JP3	JP11	JP12
75MHz (P54C)	50MHz	1.5x	Open	1 & 2	1 & 2
90MHz (P54C)	60MHz	1.5x	1 & 2	1 & 2	1 & 2
100MHz (P54C)	66MHz	1.5x	3 & 4	1 & 2	1 & 2
120MHz (P54C)	60MHz	2x	1 & 2	1 & 2	2 & 3
133MHz (P54C)	66MHz	2x	3 & 4	1 & 2	2 & 3
150MHz (P54C)	60MHz	2.5x	1 & 2	2 & 3	2 & 3
150MHz (P55C)	60MHz	2.5x	1 & 2	2 & 3	2 & 3
166MHz (P54C)	66MHz	2.5x	3 & 4	2 & 3	2 & 3
166MHz (P55C)	66MHz	2.5x	3 & 4	2 & 3	1 & 2
200MHz (P54C)	66MHz	3x	3 & 4	2 & 3	1 & 2

Note: Pins designated should be in the closed position.

Continued on next page. . .

**ELITEGROUP COMPUTER SYSTEMS, INC.**  
**P5VX-A (VER 1.1 PCB 1.0)**

... continued from previous page

CPU SPEED SELECTION (CON'T)					
CPU speed	Clock speed	Multiplier	JP16	JP17	JP18
75MHz (P54C)	50MHz	1.5x	1 & 2	1 & 2	1 & 2
90MHz (P54C)	60MHz	1.5x	1 & 2	1 & 2	1 & 2
100MHz (P54C)	66MHz	1.5x	1 & 2	1 & 2	1 & 2
120MHz (P54C)	60MHz	2x	1 & 2	1 & 2	1 & 2
133MHz (P54C)	66MHz	2x	1 & 2	1 & 2	1 & 2
150MHz (P54C)	60MHz	2.5x	1 & 2	1 & 2	1 & 2
150MHz (P55C)	60MHz	2.5x	2 & 3	2 & 3	2 & 3
166MHz (P54C)	66MHz	2.5x	1 & 2	1 & 2	1 & 2
166MHz (P55C)	66MHz	2.5x	2 & 3	2 & 3	2 & 3
200MHz (P54C)	66MHz	3x	1 & 2	1 & 2	1 & 2

Note: Pins designated should be in the closed position. JP16, JP17 & JP18 may not be present on all boards. The location is unidentified.

CPU VOLTAGE SELECTION (P54C)	
Voltage	JP10
3.3v	Pins 1 & 2 closed
í 3.525v	Pins 3 & 4 closed

CPU VOLTAGE SELECTION (P55C)	
Voltage	JP20
2.5V	Pins 1 & 2 closed
2.8V	Pins 3 & 4 closed