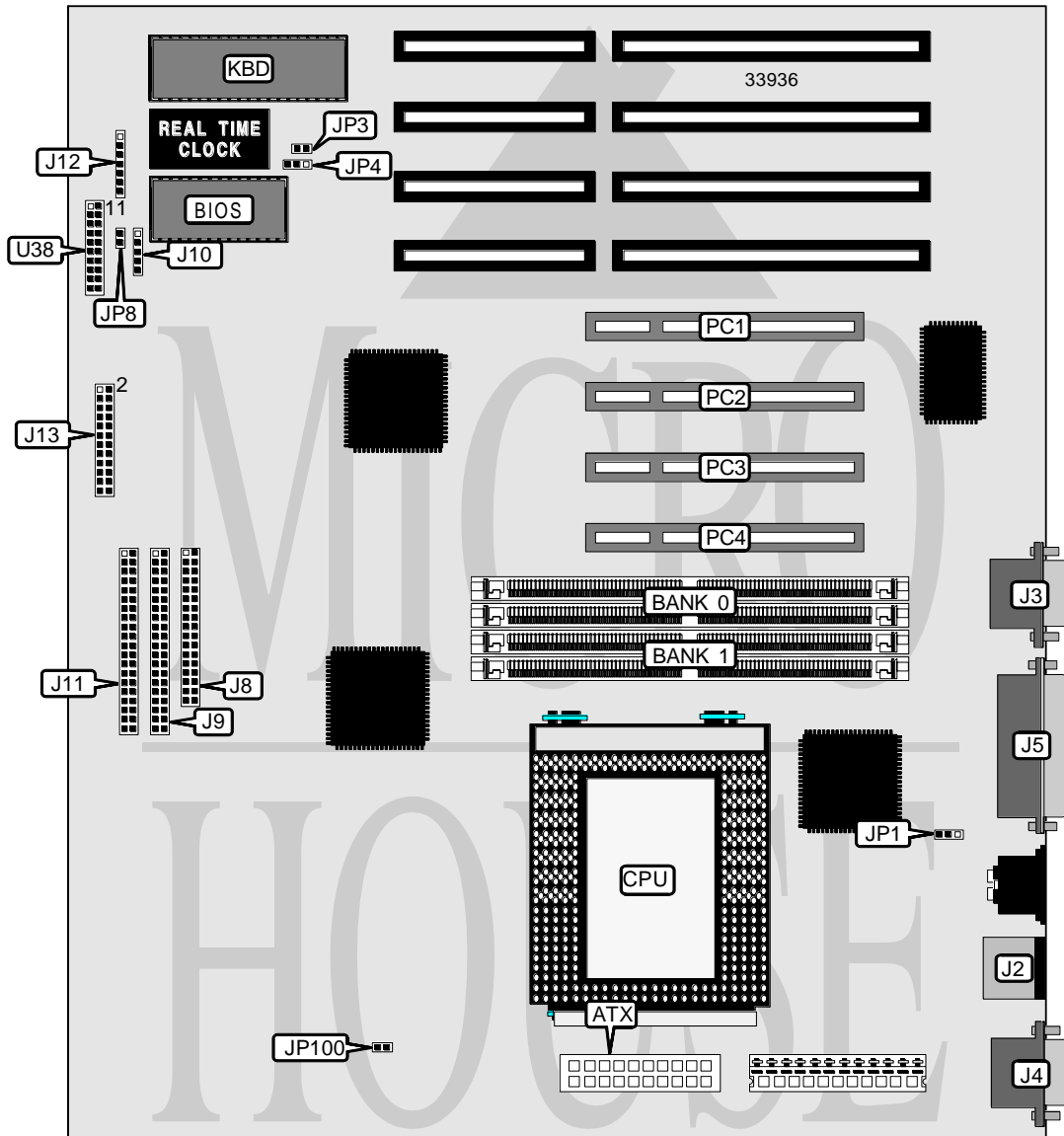


ELITEGROUP COMPUTER SYSTEMS, INC.

P6FX1-A (VER. 1.1)

| | |
|-------------------------------|--------------------------------------------------------------------------------------------------------------------------------------------------------------------------------------------------|
| Processor | Pentium Pro |
| Processor Speed | 150/166/180/200MHz |
| Chip Set | Intel |
| Video Chip Set | None |
| Maximum Onboard Memory | 256MB (EDO supported) |
| Maximum Video Memory | None |
| Cache | 256/512KB (located on Pentium Pro CPU) |
| BIOS | Unidentified |
| Dimensions | 330mm x 218mm |
| I/O Options | 32-bit PCI slots (4), floppy drive interface, IDE interfaces (2), parallel port, PS/2 mouse port, serial ports (2), IR connectors (2), USB connector, ATX power connector, soft off power supply |
| NPU Options | None |



ELITEGROUP COMPUTER SYSTEMS, INC.

P6FX1-A (VER. 1.1)

... continued from previous page

| CONNECTIONS | | | |
|------------------------|----------|-----------------------|------------------|
| Purpose | Location | Purpose | Location |
| ATX power connector | ATX | IDE interface 1 | J11 |
| PS/2 mouse port | J2 | IR connector (HP) | J12 |
| Serial port 2 | J3 | Chassis fan power | JP1 |
| Parallel port | J4 | IDE interface LED | JP8 |
| Serial port 1 | J5 | Soft off power supply | JP100 |
| USB connector | J7 | 32-bit PCI slots | PC1 - PC4 |
| Floppy drive interface | J8 | Reset switch | U38 pins 9 & 10 |
| IDE interface 2 | J9 | Power LED & keylock | U38 pins 11 - 15 |
| IR connector (Intel) | J10 | Speaker | U38 pins 17 - 20 |

Note: The location of J7 is unidentified.

| USER CONFIGURABLE SETTINGS | | |
|-------------------------------------|-------|-------------------|
| Function | Label | Position |
| í Factory configured - do not alter | J6 | Unidentified |
| í CMOS memory normal operation | JP3 | Open |
| CMOS memory clear | JP3 | Closed |
| Flash BIOS voltage select 12v | JP4 | Pins 2 & 3 closed |
| Flash BIOS voltage select 5v | JP4 | Pins 1 & 2 closed |
| í Factory configured - do not alter | JP6 | Unidentified |
| í Factory configured - do not alter | JP7 | Unidentified |

Note: The location of jumpers J6, JP6 & JP7 are unidentified.

| DRAM CONFIGURATION | | |
|--------------------|--------------|-------------|
| Size | Bank 0 | Bank 1 |
| 8MB | (2) 1M x 36 | None |
| 16MB | (2) 2M x 36 | None |
| 16MB | (2) 1M x 36 | (2) 1M x 36 |
| 24MB | (2) 2M x 36 | (2) 1M x 36 |
| 32MB | (2) 4M x 36 | None |
| 32MB | (2) 2M x 36 | (2) 2M x 36 |
| 40MB | (2) 4M x 36 | (2) 1M x 36 |
| 48MB | (2) 4M x 36 | (2) 2M x 36 |
| 64MB | (2) 8M x 36 | None |
| 64MB | (2) 4M x 36 | (2) 4M x 36 |
| 72MB | (2) 8M x 36 | (2) 1M x 36 |
| 80MB | (2) 8M x 36 | (2) 2M x 36 |
| 96MB | (2) 8M x 36 | (2) 4M x 36 |
| 128MB | (2) 8M x 36 | (2) 8M x 36 |
| 128MB | (2) 16M x 36 | None |
| 136MB | (2) 16M x 36 | (2) 1M x 36 |

Continued on next page. . .

ELITEGROUP COMPUTER SYSTEMS, INC.
P6FX1-A (VER. 1.1)

... continued from previous page

| DRAM CONFIGURATION (CON'T) | | |
|-----------------------------------|---------------|---------------|
| Size | Bank 0 | Bank 1 |
| 144MB | (2) 16M x 36 | (2) 2M x 36 |
| 160MB | (2) 16M x 36 | (2) 4M x 36 |
| 192MB | (2) 16M x 36 | (2) 8M x 36 |
| 256MB | (2) 16M x 36 | (2) 16M x 36 |

Note: Board accepts EDO memory.

| CACHE CONFIGURATION |
|------------------------------------------------------------|
| Note: 256KB/512KB cache is located on the Pentium Pro CPU. |

| CPU SPEED SELECTION | | | |
|----------------------------|--------------------|-------------------|-----------------------------------------|
| CPU speed | Clock speed | Multiplier | J13 |
| 150MHz | 60MHz | 2.5x | 3 & 4, 5 & 6, 11 & 12, 13 & 14, 15 & 16 |
| 166MHz | 66MHz | 2.5x | 1 & 2, 7 & 8, 11 & 12, 13 & 14, 15 & 16 |
| 180MHz | 60MHz | 3x | 3 & 4, 5 & 6, 9 & 10, 13 & 14, 15 & 16 |
| 200MHz | 66MHz | 3x | 1 & 2, 7 & 8, 9 & 10, 13 & 14, 15 & 16 |

Note: Pins designated should be in the closed position.