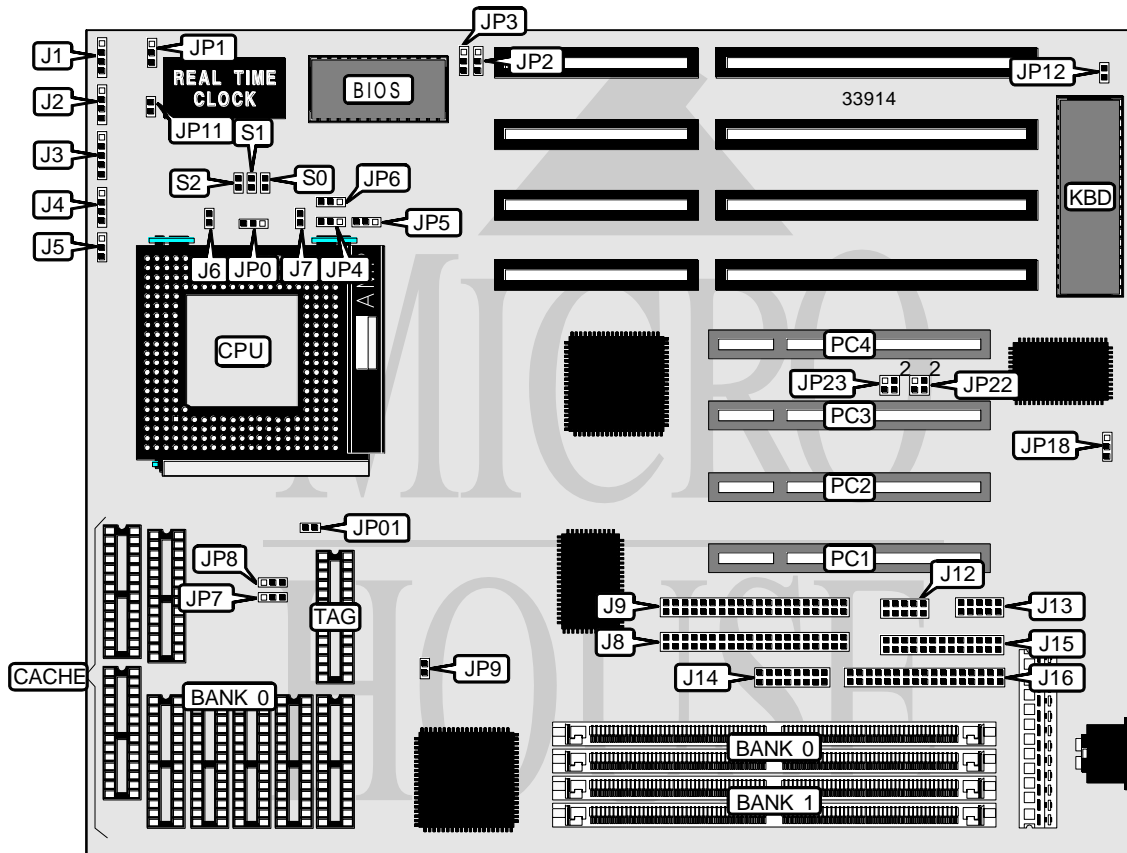


GEMLIGHT COMPUTER, LTD. GMB-P54SPS (VER. 2.00)

Processor	CX M1/Pentium
Processor Speed	75/90/100/120/133MHz
Chip Set	SIS
Video Chip Set	None
Maximum Onboard Memory	128MB (EDO supported)
Maximum Video Memory	None
Cache	256/512/1024KB
BIOS	Award
Dimensions	270mm x 220mm
I/O Options	32-bit PCI slots (4), floppy drive interface, game interface, green PC connector, IDE interfaces (2), parallel port, serial ports (2)
NPU Options	None



Continued on next page...

GEMLIGHT COMPUTER, LTD.

GMB-P54SPS (VER. 2.00)

... continued from previous page

CONNECTIONS			
Purpose	Location	Purpose	Location
Chassis fan power	J1	IDE interface 1	J9
IDE interface LED	J2	Serial port 1	J12
Power LED & keylock	J3	Serial port 2	J13
Speaker	J4	Game interface	J14
Turbo switch	J5	Parallel port	J15
Turbo LED	J6	Floppy drive interface	J16
Reset switch	J7	Green PC connector	JP11
IDE interface 2	J8	32-bit PCI slots	PC1 - PC4

USER CONFIGURABLE SETTINGS		
Function	Label	Position
í CMOS memory normal operation	JP1	Pins 1 & 2 closed
CMOS memory clear	JP1	Pins 2 & 3 closed
í Cache write cycle invalid during write cycle	JP4	Pins 2 & 3 closed
Cache write cycle always invalid	JP4	Pins 1 & 2 closed
í CPU pipeline mode disabled	JP5	Pins 1 & 2 closed
CPU pipeline mode enabled	JP5	Pins 2 & 3 closed
í CPU internal cache write select write back	JP6	Pins 1 & 2 closed
CPU internal cache write select write through	JP6	Pins 2 & 3 closed
í Monitor type select color	JP12	Closed
Monitor type select monochrome	JP12	Open
í Parallel port IRQ select IRQ7	JP18	Pins 1 & 2 closed
Parallel port IRQ select IRQ5	JP18	Pins 2 & 3 closed

DRAM CONFIGURATION		
Size	Bank 0	Bank 1
2MB	(2) 256K x 36	None
4MB	(2) 512K x 36	None
4MB	(2) 256K x 36	(2) 256K x 36
6MB	(2) 512K x 36	(2) 256K x 36
8MB	(2) 1M x 36	None
8MB	(2) 512K x 36	(2) 512K x 36
10MB	(2) 1M x 36	(2) 256K x 36
12MB	(2) 1M x 36	(2) 512K x 36
16MB	(2) 2M x 36	None
16MB	(2) 1M x 36	(2) 1M x 36
18MB	(2) 2M x 36	(2) 256K x 36
20MB	(2) 2M x 36	(2) 512K x 36
24MB	(2) 2M x 36	(2) 1M x 36
32MB	(2) 4M x 36	None
32MB	(2) 2M x 36	(2) 2M x 36
34MB	(2) 4M x 36	(2) 256K x 36

Continued on next page. ...

GEMLIGHT COMPUTER, LTD.
GMB-P54SPS (VER. 2.00)

... continued from previous page

DRAM CONFIGURATION (CON'T)		
Size	Bank 0	Bank 1
36MB	(2) 4M x 36	(2) 512K x 36
40MB	(2) 1M x 36	(2) 4M x 36
48MB	(2) 4M x 36	(2) 2M x 36
64MB	(2) 8M x 36	None
64MB	(2) 4M x 36	(2) 4M x 36
66MB	(2) 8M x 36	(2) 256K x 36
68MB	(2) 512K x 36	(2) 8M x 36
72MB	(2) 8M x 36	(2) 1M x 36
80MB	(2) 2M x 36	(2) 8M x 36
96MB	(2) 8M x 36	(2) 4M x 36
128MB	(2) 16M x 36	None
128MB	(2) 8M x 36	(2) 8M x 36

Note: Board accepts EDO memory. Banks are interchangeable.

CACHE CONFIGURATION		
Size	Bank 0	TAG
256KB	(8) 32K x 8	(1) 8K/16K x 8
512KB	(8) 64K x 8	(1) 16K/32K x 8
1MB	(8) 128K x 8	(1) 32K x 8

CACHE JUMPER CONFIGURATION			
Size	JP7	JP8	JP9
256KB	Pins 1 & 2 closed	Pins 1 & 2 closed	Closed
512KB	Pins 2 & 3 closed	Pins 1 & 2 closed	Open
1MB	Pins 2 & 3 closed	Pins 2 & 3 closed	Closed

CPU SPEED SELECTION						
CPU speed	Clock speed	Multiplier	JP0	S0	S1	S2
75MHz	50MHz	1.5x	1 & 2	Open	Open	Closed
90MHz	60MHz	1.5x	1 & 2	Open	Closed	Open
100MHz	66MHz	1.5x	1 & 2	Closed	Open	Closed
120MHz	60MHz	2x	2 & 3	Open	Closed	Open
133MHz	66MHz	2x	2 & 3	Closed	Open	Closed

Note: Pins designated should be in the closed position.

CPU TYPE SELECTION	
Type	JP01
CX M1	Closed
P54C/CS/C-VR	Closed
P54CT/C-VRE	Open

Continued on next page. ...

GEMLIGHT COMPUTER, LTD.
GMB-P54SPS (VER. 2.00)*... continued from previous page*

DMA CHANNEL SELECTION		
Channel	JP22	JP23
í Printer	Open	Open
1	Pins 1 & 3 closed	Pins 1 & 3 closed
3	Pins 2 & 4 closed	Pins 2 & 4 closed

BIOS SELECTION		
Type	JP2	JP3
í EPROM	Pins 2 & 3 closed	Pins 2 & 3 closed
12v flash	Pins 1 & 2 closed	Pins 1 & 2 closed
5v flash	Pins 2 & 3 closed	Pins 1 & 2 closed