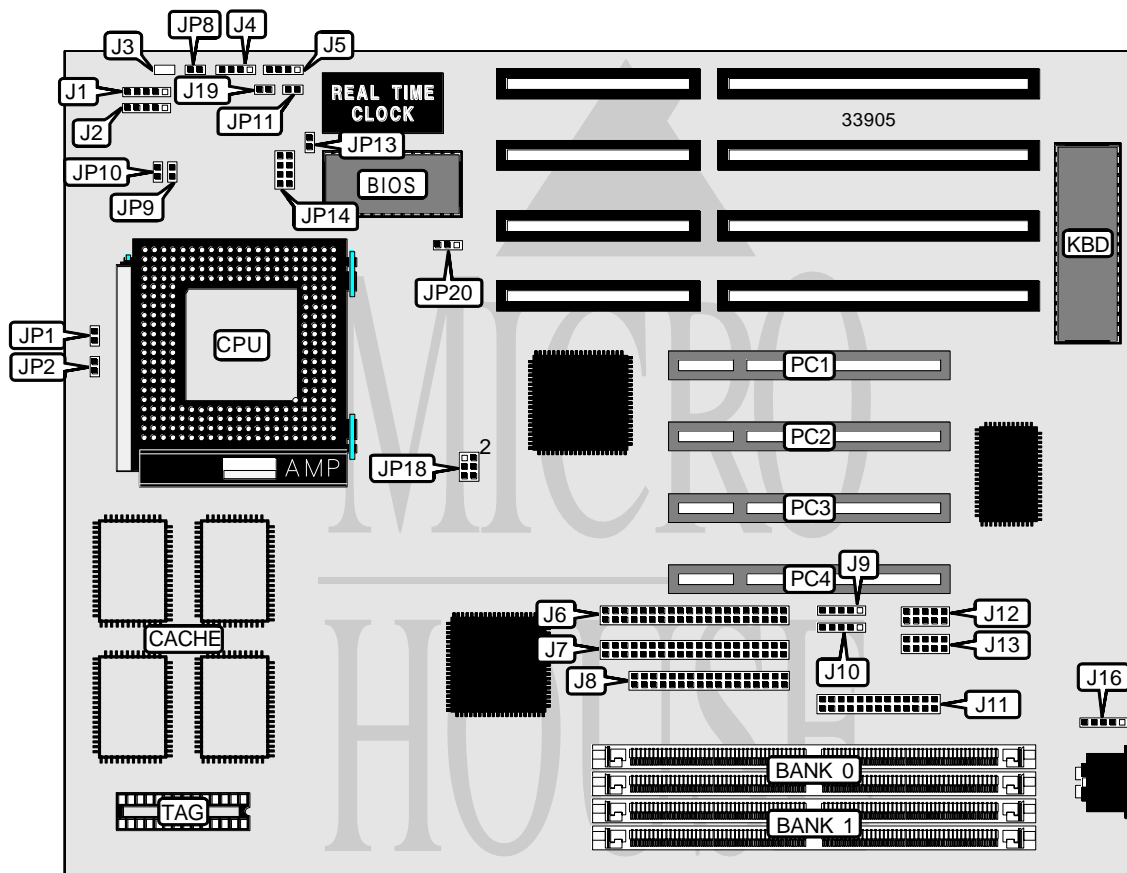


GEMLIGHT COMPUTER, LTD. GMB-P55IPS (VER. 1.50)

| | |
|-------------------------------|---|
| Processor | CX M1/AM K5/Pentium |
| Processor Speed | 75/90/100/120/133/150/166/200MHz |
| Chip Set | Intel |
| Video Chip Set | None |
| Maximum Onboard Memory | 256MB (EDO supported) |
| Maximum Video Memory | None |
| Cache | 256/512KB |
| BIOS | Award |
| Dimensions | 265mm x 220mm |
| I/O Options | 32-bit PCI slots (4), floppy drive interface, green PC connector, IDE interfaces (2), parallel port, PS/2 mouse interface, serial ports (2), IR connector, USB connectors (2) |
| NPU Options | None |



Continued on next page. . .

GEMLIGHT COMPUTER, LTD.
GMB-P55IPS (VER. 1.50)

... continued from previous page

| CONNECTIONS | | | |
|------------------------|----------|----------------------|-----------|
| Purpose | Location | Purpose | Location |
| IR connector | J1 | Parallel port | J11 |
| Power LED & keylock | J2 | Serial port 2 | J12 |
| Speaker | J4 | Serial port 1 | J13 |
| IDE interface LED | J5 | PS/2 mouse interface | J16 |
| IDE interface 1 | J6 | Turbo LED | J19 |
| IDE interface 2 | J7 | Green PC connector | JP8 |
| Floppy drive interface | J8 | Reset switch | JP11 |
| USB connector 1 | J9 | 32-bit PCI slots | PC1 - PC4 |
| USB connector 2 | J10 | | |

| USER CONFIGURABLE SETTINGS | | |
|-------------------------------------|-------|-------------------|
| Function | Label | Position |
| í Factory configured - do not alter | J3 | Unidentified |
| í CMOS memory normal operation | JP13 | Open |
| CMOS memory clear | JP13 | Closed |
| Flash BIOS voltage select 12v | JP20 | Pins 1 & 2 closed |
| Flash BIOS voltage select 5v | JP20 | Pins 2 & 3 closed |

| DRAM CONFIGURATION | | |
|--------------------|---------------|---------------|
| Size | Bank 0 | Bank 1 |
| 4MB | (2) 512K x 36 | None |
| 4MB | (2) 256K x 36 | (2) 256K x 36 |
| 6MB | (2) 512K x 36 | (2) 256K x 36 |
| 8MB | (2) 1M x 36 | None |
| 8MB | (2) 512K x 36 | (2) 512K x 36 |
| 10MB | (2) 1M x 36 | (2) 256K x 36 |
| 12MB | (2) 1M x 36 | (2) 512K x 36 |
| 16MB | (2) 2M x 36 | None |
| 16MB | (2) 1M x 36 | (2) 1M x 36 |
| 18MB | (2) 2M x 36 | (2) 256K x 36 |
| 20MB | (2) 2M x 36 | (2) 512K x 36 |
| 24MB | (2) 2M x 36 | (2) 1M x 36 |
| 32MB | (2) 4M x 36 | None |
| 32MB | (2) 2M x 36 | (2) 2M x 36 |
| 34MB | (2) 4M x 36 | (2) 256K x 36 |
| 36MB | (2) 4M x 36 | (2) 512K x 36 |
| 40MB | (2) 1M x 36 | (2) 4M x 36 |
| 48MB | (2) 4M x 36 | (2) 2M x 36 |
| 64MB | (2) 8M x 36 | None |
| 64MB | (2) 4M x 36 | (2) 4M x 36 |
| 66MB | (2) 8M x 36 | (2) 256K x 36 |
| 68MB | (2) 512K x 36 | (2) 8M x 36 |

Continued on next page. ...

GEMLIGHT COMPUTER, LTD.

GMB-P55IPS (VER. 1.50)

... continued from previous page

| DRAM CONFIGURATION (CON'T) | | |
|----------------------------|--------------|---------------|
| Size | Bank 0 | Bank 1 |
| 72MB | (2) 8M x 36 | (2) 1M x 36 |
| 80MB | (2) 2M x 36 | (2) 8M x 36 |
| 96MB | (2) 8M x 36 | (2) 4M x 36 |
| 128MB | (2) 16M x 36 | None |
| 128MB | (2) 8M x 36 | (2) 8M x 36 |
| 130MB | (2) 16M x 36 | (2) 256K x 36 |
| 132MB | (2) 16M x 36 | (2) 512K x 36 |
| 136MB | (2) 16M x 36 | (2) 1M x 36 |
| 144MB | (2) 16M x 36 | (2) 2M x 36 |
| 160MB | (2) 16M x 36 | (2) 4M x 36 |
| 192MB | (2) 16M x 36 | (2) 8M x 36 |
| 256MB | (2) 16M x 36 | (2) 16M x 36 |

Note: Board accepts EDO memory. Board also accepts x 32 SIMMs. Banks are interchangeable.

| CACHE CONFIGURATION | | | |
|---------------------|--------------|--------------|-----------------|
| Size | Bank 0 | Bank 1 | TAG |
| 256KB | (2) 32K x 32 | None | (1) 8K x 8 |
| 512KB | (2) 32K x 32 | (2) 32K x 32 | (1) 16K/32K x 8 |
| 512KB | (2) 64K x 32 | None | (1) 16K/32K x 8 |

Note: The location of banks 0 & 1 are unidentified.

| CPU SPEED SELECTION (CYRIX) | | | | | |
|-----------------------------|-------------|------------|--------|------|--------------|
| CPU speed | Clock speed | Multiplier | JP1 | JP2 | JP18 |
| 120MHz | 50MHz | 2x | Closed | Open | 1 & 2, 3 & 4 |
| 133MHz | 55MHz | 2x | Closed | Open | Open |
| 150MHz | 60MHz | 2x | Closed | Open | 3 & 4 |
| 166MHz | 66MHz | 2x | Closed | Open | 1 & 2 |
| 200MHz | 66MHz | 3x | Closed | Open | 5 & 6 |

Note: Pins designated should be in the closed position.

| CPU SPEED SELECTION (AMD) | | | | | |
|---------------------------|-------------|------------|--------|--------|--------------|
| CPU speed | Clock speed | Multiplier | JP1 | JP2 | JP18 |
| 75MHz | 50MHz | 1.5x | Open | Open | 1 & 2, 3 & 4 |
| 90MHz | 60MHz | 1.5x | Open | Open | 3 & 4 |
| 100MHz | 66MHz | 1.5x | Open | Open | 1 & 2 |
| 120MHz | 60MHz | 1.5x | Open | Open | 3 & 4 |
| 133MHz | 66MHz | 1.5x | Open | Open | 1 & 2 |
| 150MHz | 66MHz | 1.5x | Open | Open | 1 & 2 |
| 166MHz | 66MHz | 2.5x | Closed | Closed | 1 & 2 |

Note: Pins designated should be in the closed position.

Continued on next page. . .

GEMLIGHT COMPUTER, LTD.
GMB-P55IPS (VER. 1.50)

... continued from previous page

| CPU SPEED SELECTION (INTEL) | | | | | |
|-----------------------------|-------------|------------|--------|--------|--------------|
| CPU speed | Clock speed | Multiplier | JP1 | JP2 | JP18 |
| 75MHz | 50MHz | 1.5x | Open | Open | 1 & 2, 3 & 4 |
| 90MHz | 60MHz | 1.5x | Open | Open | 3 & 4 |
| 100MHz | 66MHz | 1.5x | Open | Open | 1 & 2 |
| 120MHz | 60MHz | 2x | Closed | Open | 3 & 4 |
| 133MHz | 66MHz | 2x | Closed | Open | 1 & 2 |
| 150MHz | 60MHz | 2.5x | Closed | Closed | 3 & 4 |
| 166MHz | 66MHz | 2.5x | Closed | Closed | 1 & 2 |
| 200MHz | 66MHz | 3x | Open | Closed | 1 & 2 |

Note: Pins designated should be in the closed position.

| CPU VOLTAGE SELECTION | | | | |
|-----------------------|--------|--------|--------|----------------------------|
| Voltage | V core | JP9 | JP10 | JP14 |
| 3.4v (single) | N/A | Open | Closed | 1 & 2, 3 & 4, 5 & 6, 7 & 8 |
| 3.4v (dual) | 2.8v | Open | Closed | Open |
| 3.5v (single) | N/A | Closed | Open | 1 & 2, 3 & 4, 5 & 6, 7 & 8 |

Note: Pins designated should be in the closed position.