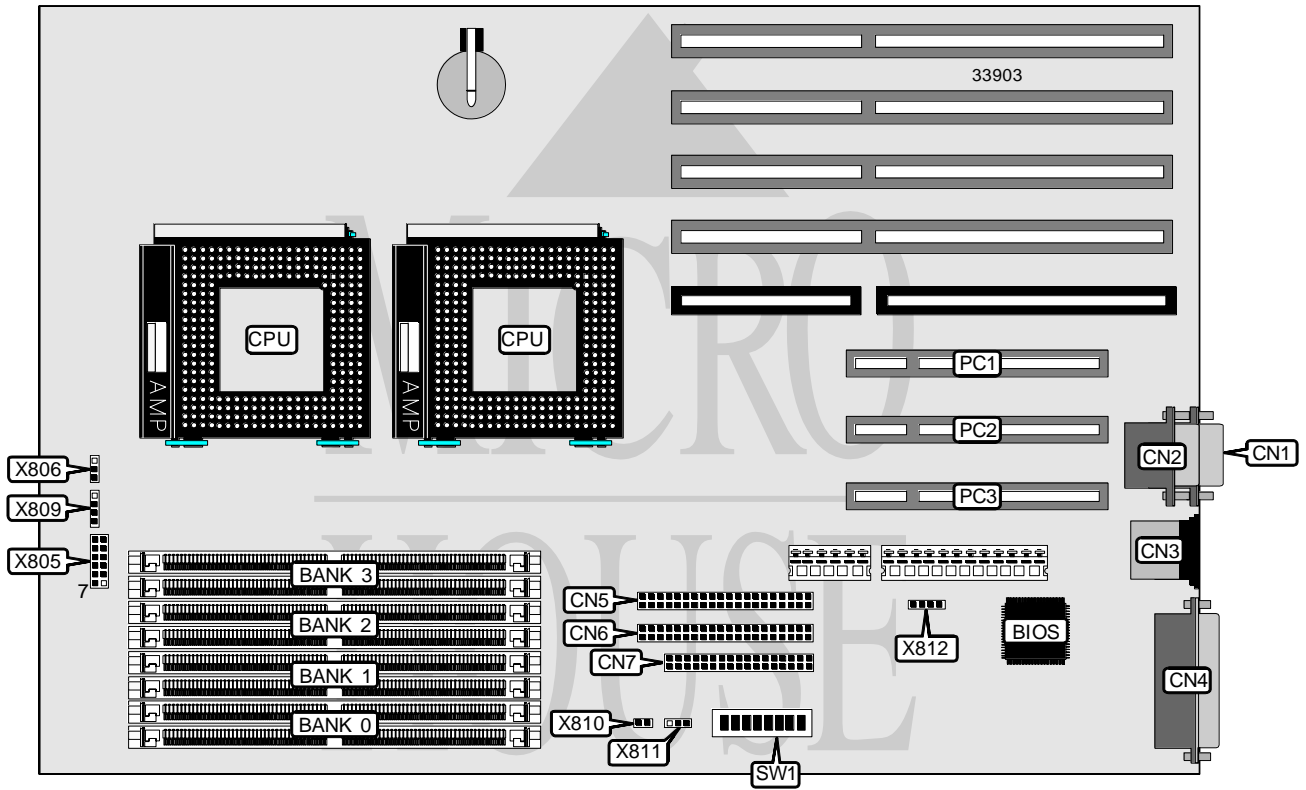


# SIEMENS NIXDORF INFORMATIONSSYSTEME AG SYSTEM BOARD D823

<b>Processor</b>	Pentium
<b>Processor Speed</b>	75/90/100/120/133/150/166/180/200MHz
<b>Chip Set</b>	Intel
<b>Video Chip Set</b>	None
<b>Maximum Onboard Memory</b>	256MB
<b>Maximum Video Memory</b>	None
<b>Cache</b>	256KB
<b>BIOS</b>	Unidentified
<b>Dimensions</b>	330mm x 218mm
<b>I/O Options</b>	32-bit PCI slots (3), floppy drive interface, green PC connector, IDE interfaces (2), parallel port, PS/2 mouse port, serial ports (2), soft off power switch, soft off power supply
<b>NPU Options</b>	None



Continued on next page. . .

# SIEMENS NIXDORF INFORMATIONSSYSTEME AG

## SYSTEM BOARD D823

... continued from previous page

CONNECTIONS			
Purpose	Location	Purpose	Location
PS/2 mouse port	CN1	32-bit PCI slots	PC1 - PC3
Serial port 2	CN2	Front panel connector	X805
Serial port 1	CN3	Chassis fan power	X806
Parallel port	CN4	Speaker	X809
IDE interface 2	CN5	Soft off power switch	X810
IDE interface 1	CN6	Soft off power supply	X811
Floppy drive interface	CN7	SCSI LED	X812

USER CONFIGURABLE SETTINGS		
Function	Label	Position
í Flash BIOS normal operation	SW1/1	Off
Flash BIOS recovery mode	SW1/1	On
í Password normal operation	SW1/2	Off
Password clear	SW1/2	On
í Port 0C91H bit 2 set to 1	SW1/3	Off
Port 0C91H bit 2 set to 0	SW1/3	On
í Port 0C91H bit 3 set to 1	SW1/4	Off
Port 0C91H bit 3 set to 0	SW1/4	On
í Flash BIOS write protect disabled	SW1/5	Off
Flash BIOS write protect enabled	SW1/5	On
í Floppy drive write protect disabled	SW1/6	Off
Floppy drive write protect enabled	SW1/6	On
í Factory configured - do not alter	SW1/7	Off
í System normal operation	SW1/8	Off
System runs POST tests	SW1/8	On

DRAM CONFIGURATION				
Size	Bank 0	Bank 1	Bank 2	Bank 3
8MB	(2) 1M x 36	None	None	None
16MB	(2) 2M x 36	None	None	None
16MB	(2) 1M x 36	(2) 1M x 36	None	None
24MB	(2) 2M x 36	(2) 1M x 36	None	None
24MB	(2) 1M x 36	(2) 1M x 36	(2) 1M x 36	None
24MB	(2) 1M x 36	(2) 2M x 36	None	None
32MB	(2) 4M x 36	None	None	None
32MB	(2) 2M x 36	(2) 1M x 36	(2) 1M x 36	None
32MB	(2) 2M x 36	(2) 2M x 36	None	None
32MB	(2) 1M x 36	(2) 1M x 36	(2) 1M x 36	(2) 1M x 36
40MB	(2) 4M x 36	(2) 1M x 36	None	None
40MB	(2) 2M x 36	(2) 1M x 36	(2) 1M x 36	(2) 1M x 36
40MB	(2) 1M x 36	(2) 2M x 36	(2) 2M x 36	None
40MB	(2) 1M x 36	(2) 4M x 36	None	None

Continued on next page. ...

# SIEMENS NIXDORF INFORMATIONSSYSTEME AG

## SYSTEM BOARD D823

... continued from previous page

DRAM CONFIGURATION (CON'T)				
Size	Bank 0	Bank 1	Bank 2	Bank 3
48MB	(2) 4M x 36	(2) 1M x 36	(2) 1M x 36	None
48MB	(2) 4M x 36	(2) 2M x 36	None	None
48MB	(2) 2M x 36	(2) 2M x 36	(2) 2M x 36	None
56MB	(2) 4M x 36	(2) 1M x 36	(2) 1M x 36	(2) 1M x 36
56MB	(2) 1M x 36	(2) 2M x 36	(2) 2M x 36	(2) 2M x 36
64MB	(2) 8M x 36	None	None	None
64MB	(2) 4M x 36	(2) 2M x 36	(2) 2M x 36	None
64MB	(2) 4M x 36	(2) 4M x 36	None	None
64MB	(2) 2M x 36	(2) 2M x 36	(2) 2M x 36	(2) 2M x 36
72MB	(2) 8M x 36	(2) 1M x 36	None	None
72MB	(2) 1M x 36	(2) 4M x 36	(2) 4M x 36	None
72MB	(2) 1M x 36	(2) 8M x 36	None	None
80MB	(2) 8M x 36	(2) 1M x 36	(2) 1M x 36	None
80MB	(2) 4M x 36	(2) 2M x 36	(2) 2M x 36	(2) 2M x 36
80MB	(2) 2M x 36	(2) 8M x 36	None	None
88MB	(2) 8M x 36	(2) 1M x 36	(2) 1M x 36	(2) 1M x 36
96MB	(2) 8M x 36	(2) 2M x 36	(2) 2M x 36	None
96MB	(2) 4M x 36	(2) 4M x 36	(2) 4M x 36	None
96MB	(2) 4M x 36	(2) 8M x 36	None	None
104MB	(2) 1M x 36	(2) 4M x 36	(2) 4M x 36	(2) 4M x 36
112MB	(2) 8M x 36	(2) 2M x 36	(2) 2M x 36	(2) 2M x 36
128MB	(2) 8M x 36	(2) 4M x 36	(2) 4M x 36	None
128MB	(2) 8M x 36	(2) 8M x 36	None	None
136MB	(2) 1M x 36	(2) 8M x 36	(2) 8M x 36	None
144MB	(2) 2M x 36	(2) 8M x 36	(2) 8M x 36	None
160MB	(2) 8M x 36	(2) 4M x 36	(2) 4M x 36	(2) 4M x 36
160MB	(2) 4M x 36	(2) 8M x 36	(2) 8M x 36	None
192MB	(2) 8M x 36	(2) 8M x 36	(2) 8M x 36	None
200MB	(2) 1M x 36	(2) 8M x 36	(2) 8M x 36	(2) 8M x 36
208MB	(2) 2M x 36	(2) 8M x 36	(2) 8M x 36	(2) 8M x 36
224MB	(2) 4M x 36	(2) 8M x 36	(2) 8M x 36	(2) 8M x 36
256MB	(2) 32M x 36	None	None	None
256MB	(2) 8M x 36	(2) 8M x 36	(2) 8M x 36	(2) 8M x 36

Note: Banks are interchangeable.

### CACHE CONFIGURATION

Note: 256KB cache is factory installed and is not configurable. The location is unidentified.