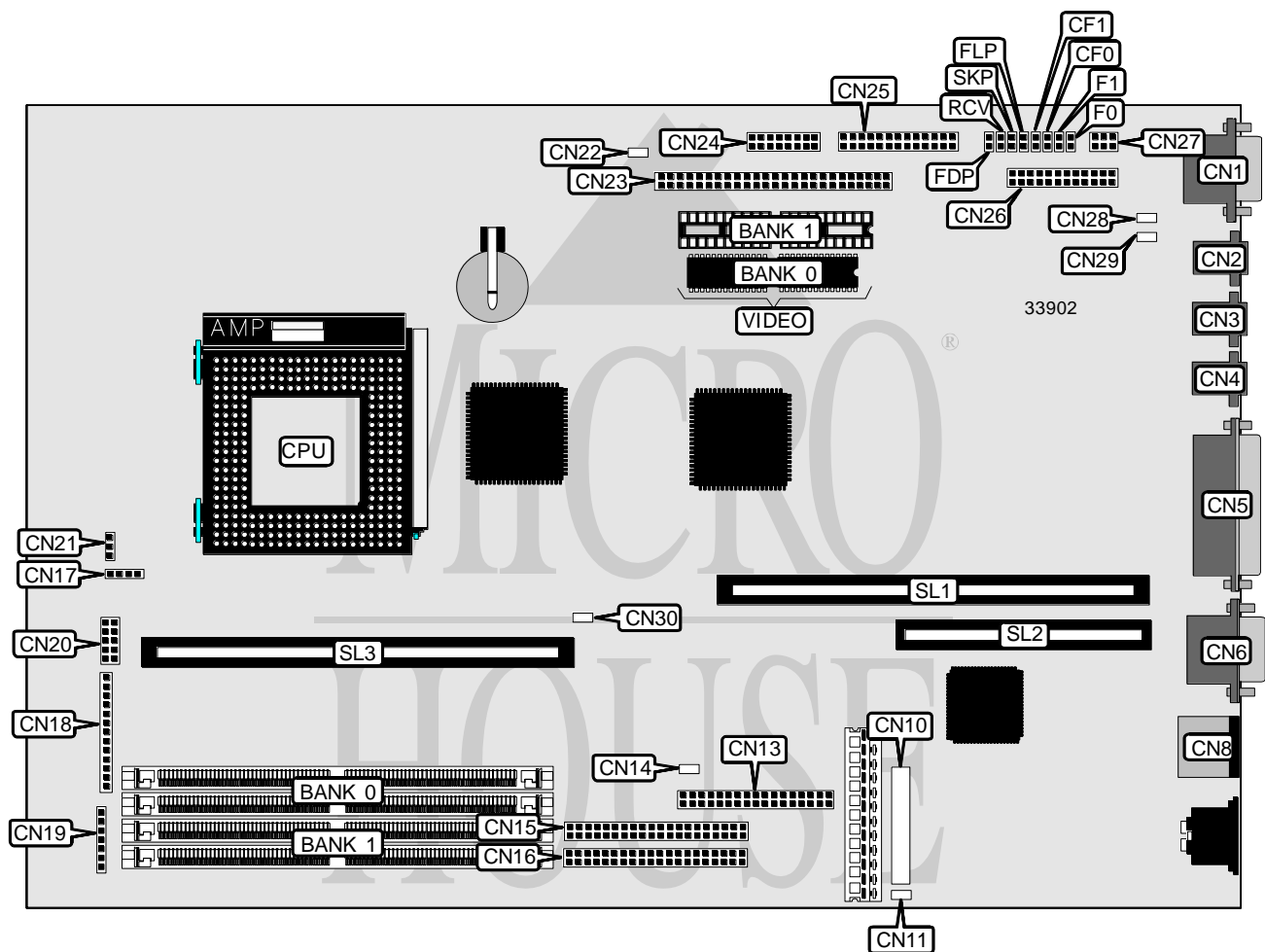


SIEMENS NIXDORF INFORMATIONSSYSTEME AG SYSTEM BOARD D912

Processor	Pentium
Processor Speed	75/90/100/120MHz
Chip Set	Unidentified
Video Chip Set	Tseng Labs
Maximum Onboard Memory	128MB
Maximum Video Memory	2MB
Cache	256/512KB
BIOS	Phoenix
Dimensions	330mm x 218mm
I/O Options	Floppy drive interface, IDE interfaces (2), parallel port, PS/2 mouse port, serial port, VGA port, riser slot, cache slot, IR connector, microphone port, line in connector, line out connector, CD line in connector, soft off power supply, main switch connector, remote on connector, image port connector, game/MIDI connector, VGA/VESA pass through connector, wavetable connector, voice/modem connector, audio in connector, CD input connector, fax/modem slot
NPU Options	None



Continued on next page. . .

SIEMENS NIXDORF INFORMATIONSSYSTEME AG

SYSTEM BOARD D912

... continued from previous page

CONNECTIONS			
Purpose	Location	Purpose	Location
VGA port	CN1	LED connector	CN19
Microphone connector	CN2	LED connector	CN20
Line in connector	CN3	Chassis fan power	CN21
Line out connector	CN4	Remote on connector	CN22
Parallel port	CN5	Image port connector	CN23
Serial port	CN6	Game/MIDI interface	CN24
PS/2 mouse port	CN8	VGA/VESA pass through connector	CN25
IR connector	CN10	Wavetable connector	CN26
Soft off power supply	CN11	Voice/modem connector	CN27
Floppy drive interface	CN13	Audio in connector	CN28
Main switch connector	CN14	CD line in connector	CN29
IDE interface 1	CN15	CD input connector	CN30
IDE interface 2	CN16	Riser slot	SL1
Speaker	CN17	Fax/modem slot	SL2
LED connector	CN18	Cache slot	SL3

USER CONFIGURABLE SETTINGS		
Function	Label	Position
í Floppy drive write protect disabled	FDP	Open
Floppy drive write protect enabled	FDP	Closed
í Flash BIOS write protect disabled	FLP	Open
Flash BIOS write protect enabled	FLP	Closed
í Flash BIOS normal operation	RCV	Open
Flash BIOS recovery mode	RCV	Closed
í Factory configured - do not alter	SKP	Unidentified

DRAM CONFIGURATION		
Size	Bank 0	Bank 1
8MB	(2) 1M x 36	None
16MB	(2) 2M x 36	None
16MB	(2) 1M x 36	(2) 1M x 36
24MB	(2) 2M x 36	(2) 1M x 36
32MB	(2) 4M x 36	None
32MB	(2) 2M x 36	(2) 2M x 36
40MB	(2) 4M x 36	(2) 1M x 36
48MB	(2) 4M x 36	(2) 2M x 36
64MB	(2) 8M x 36	None
64MB	(2) 4M x 36	(2) 4M x 36
72MB	(2) 8M x 36	(2) 1M x 36
80MB	(2) 8M x 36	(2) 2M x 36
96MB	(2) 8M x 36	(2) 4M x 36
128MB	(2) 8M x 36	(2) 8M x 36

Continued on next page...

SIEMENS NIXDORF INFORMATIONSSYSTEME AG

SYSTEM BOARD D912

... continued from previous page

CACHE CONFIGURATION	
Size	SL3
256KB	256KB module installed
512KB	512KB module installed

VIDEO MEMORY CONFIGURATION		
Size	Bank 0	Bank 1
1MB	1MB	None
2MB	1MB	(2) 256K x 16

Note: Bank 0 is factory installed and is not configurable.

CPU SPEED SELECTION						
CPU speed	Clock speed	Multiplier	CF0	CF1	F0	F1
75MHz	50MHz	1.5x	Open	Open	Closed	Closed
90MHz	60MHz	1.5x	Open	Open	Closed	Open
100MHz	66MHz	1.5x	Open	Open	Open	Closed
120MHz	60MHz	2x	Closed	Open	Closed	Open