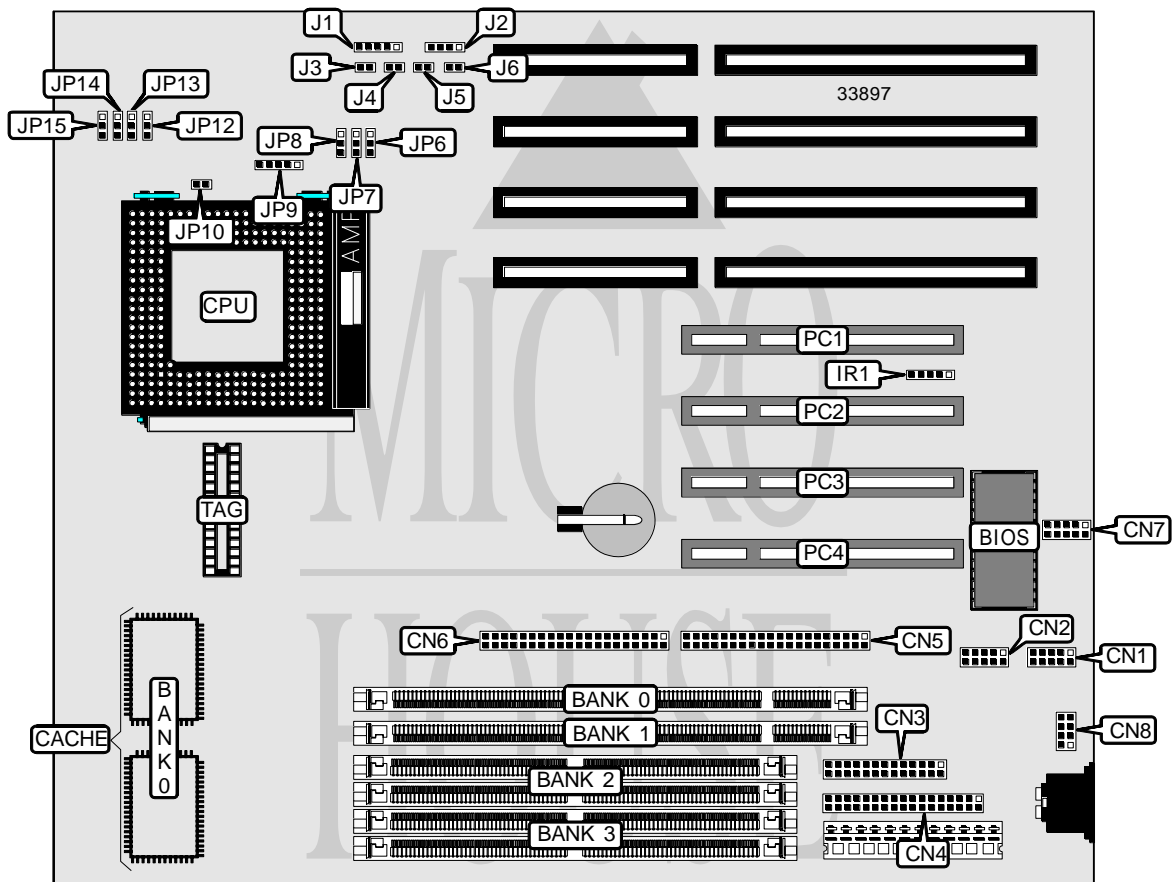


FREE COMPUTER TECHNOLOGY, INC.

P 5 F 7 6

Processor	CX M1/AM K5/Pentium
Processor Speed	75/90/100/120/133/150/166/180/200MHz
Chip Set	Intel
Video Chip Set	None
Maximum Onboard Memory	128MB (EDO supported)
Maximum Video Memory	1MB
Cache	256/512KB
BIOS	Award
Dimensions	330mm x 218mm
I/O Options	32-bit PCI slots (4), floppy drive interface, green PC connector, IDE interfaces (2), parallel port, PS/2 mouse interface, serial ports (2), IR connector, USB connector
NPU Options	None



Continued on next page. . .

FREE COMPUTER TECHNOLOGY, INC.
P 5 F 7 6

... continued from previous page

CONNECTIONS			
Purpose	Location	Purpose	Location
Serial port 1	CN1	IR connector	IR1
Serial port 2	CN2	Power LED & keylock	J1
Parallel port	CN3	Speaker	J2
Floppy drive interface	CN4	Green PC connector	J3
IDE interface 1	CN5	Turbo LED	J4
IDE interface 2	CN6	Reset switch	J5
USB connector	CN7	IDE interface LED	J6
PS/2 mouse interface	CN8	32-bit PCI slots	PC1 - PC4

USER CONFIGURABLE SETTINGS		
Function	Label	Position
í CMOS memory normal operation	JP10	Open
CMOS memory clear	JP10	Closed

DIMM/DRAM CONFIGURATION				
Size	Bank 0	Bank 1	Bank 2	Bank 3
8MB	None	None	(2) 1M x 32	None
8MB	(1) 1M x 64	None	None	None
16MB	(1) 1M x 64	None	None	(2) 1M x 32
16MB	None	(1) 1M x 64	(2) 1M x 32	None
16MB	None	None	(2) 2M x 32	None
16MB	None	None	(2) 1M x 32	(2) 1M x 32
16MB	(1) 2M x 64	None	None	None
16MB	(1) 1M x 64	(1) 1M x 64	None	None
24MB	(1) 1M x 64	None	None	(2) 2M x 32
24MB	(1) 2M x 64	None	None	(2) 1M x 32
24MB	None	(1) 1M x 64	(2) 2M x 32	None
24MB	None	(1) 2M x 64	(2) 1M x 32	None
24MB	None	None	(2) 2M x 32	(2) 1M x 32
24MB	(1) 2M x 64	(1) 1M x 64	None	None
32MB	(1) 2M x 64	None	None	(2) 2M x 32
32MB	None	(1) 2M x 64	(2) 2M x 32	None
32MB	None	None	(2) 4M x 32	None
32MB	None	None	(2) 2M x 32	(2) 2M x 32
32MB	(1) 4M x 64	None	None	None
32MB	(1) 2M x 64	(1) 2M x 64	None	None
40MB	(1) 1M x 64	None	None	(2) 4M x 32
40MB	(1) 4M x 64	None	None	(2) 1M x 32
40MB	None	(1) 1M x 64	(2) 4M x 32	None
40MB	None	(1) 4M x 64	(2) 1M x 32	None
40MB	None	None	(2) 4M x 32	(2) 1M x 32

Continued on next page. ...

FREE COMPUTER TECHNOLOGY, INC.

P 5 F 7 6

... continued from previous page

DIMM/DRAM CONFIGURATION (CON'T)				
Size	Bank 0	Bank 1	Bank 2	Bank 3
40MB	(1) 4M x 64	(1) 1M x 64	None	None
48MB	(1) 2M x 64	None	None	(2) 4M x 32
48MB	(1) 4M x 64	None	None	(2) 2M x 32
48MB	None	(1) 2M x 64	(2) 4M x 32	None
48MB	None	(1) 4M x 64	(2) 2M x 32	None
48MB	None	None	(2) 4M x 32	(2) 2M x 32
48MB	(1) 4M x 64	(1) 2M x 64	None	None
64MB	(1) 4M x 64	None	None	(2) 4M x 32
64MB	None	(1) 4M x 64	(2) 4M x 32	None
64MB	None	None	(2) 8M x 32	None
64MB	None	None	(2) 4M x 32	(2) 4M x 32
64MB	(1) 8M x 64	None	None	None
64MB	(1) 4M x 64	(1) 4M x 64	None	None
72MB	(1) 1M x 64	None	None	(2) 8M x 32
72MB	(1) 8M x 64	None	None	(2) 1M x 32
72MB	None	(1) 1M x 64	(2) 8M x 32	None
72MB	None	(1) 8M x 64	(2) 1M x 32	None
72MB	None	None	(2) 8M x 32	(2) 1M x 32
72MB	(1) 8M x 64	(1) 1M x 64	None	None
80MB	(1) 2M x 64	None	None	(2) 8M x 32
80MB	(1) 8M x 64	None	None	(2) 2M x 32
80MB	None	(1) 2M x 64	(2) 8M x 32	None
80MB	None	(1) 8M x 64	(2) 2M x 32	None
80MB	None	None	(2) 8M x 32	(2) 2M x 32
80MB	(1) 8M x 64	(1) 2M x 64	None	None
96MB	(1) 4M x 64	None	None	(2) 8M x 32
96MB	(1) 8M x 64	None	None	(2) 4M x 32
96MB	None	(1) 4M x 64	(2) 8M x 32	None
96MB	None	(1) 8M x 64	(2) 4M x 32	None
96MB	None	None	(2) 8M x 32	(2) 4M x 32
96MB	(1) 8M x 64	(1) 4M x 64	None	None
128MB	(1) 8M x 64	None	None	(2) 8M x 32
128MB	None	(1) 8M x 64	(2) 8M x 32	None
128MB	None	None	(2) 8M x 32	(2) 8M x 32
128MB	(1) 8M x 64	(1) 8M x 64	None	None

Note: Board accepts EDO memory. Banks 0 & 1, 2 & 3 are interchangeable if only DIMMs or SIMMs are installed.

CACHE CONFIGURATION		
Size	Bank 0	TAG
256KB	(2) 32K x 32	Unidentified
512KB	(2) 64K x 32	Unidentified

Continued on next page. . .

FREE COMPUTER TECHNOLOGY, INC.
P 5 F 7 6

... continued from previous page

CPU SPEED SELECTION (CYRIX)						
CPU speed	Clock speed	Multiplier	JP6	JP7	JP8	JP9
120MHz	50MHz	2x	2 & 3	2 & 3	2 & 3	2 & 3
133MHz	55MHz	2x	2 & 3	1 & 2	2 & 3	2 & 3
150MHz	60MHz	2x	2 & 3	2 & 3	1 & 2	2 & 3
166MHz	66MHz	2x	1 & 2	2 & 3	2 & 3	2 & 3

Note: Pins designated should be in the closed position.

CPU SPEED SELECTION (AMD)						
CPU speed	Clock speed	Multiplier	JP6	JP7	JP8	JP9
75MHz	50MHz	1.5x	2 & 3	2 & 3	2 & 3	Open
90MHz	60MHz	1.5x	2 & 3	2 & 3	1 & 2	Open
100MHz	66MHz	1.5x	1 & 2	2 & 3	2 & 3	Open
120MHz	60MHz	1.5x	2 & 3	2 & 3	1 & 2	Open
133MHz	66MHz	1.5x	1 & 2	2 & 3	2 & 3	Open

Note: Pins designated should be in the closed position.

CPU SPEED SELECTION (INTEL)						
CPU speed	Clock speed	Multiplier	JP6	JP7	JP8	JP9
75MHz	50MHz	1.5x	2 & 3	2 & 3	2 & 3	Open
90MHz	60MHz	1.5x	2 & 3	2 & 3	1 & 2	Open
100MHz	66MHz	1.5x	1 & 2	2 & 3	2 & 3	Open
120MHz	60MHz	2x	2 & 3	2 & 3	1 & 2	2 & 3
133MHz	66MHz	2x	1 & 2	2 & 3	2 & 3	2 & 3
150MHz	60MHz	2.5x	2 & 3	2 & 3	1 & 2	2 & 3, 4 & 5
166MHz	66MHz	2.5x	1 & 2	2 & 3	2 & 3	2 & 3, 4 & 5
180MHz	60MHz	3x	2 & 3	2 & 3	1 & 2	1 & 2, 4 & 5
200MHz	66MHz	3x	1 & 2	2 & 3	2 & 3	1 & 2, 4 & 5

Note: Pins designated should be in the closed position.

CPU VOLTAGE SELECTION					
Voltage	V core	JP12	JP13	JP14	JP15
3.3v (CX M1)	2.5v	2 & 3	2 & 3	Open	1 & 2
3.3v (P55C)	2.5v	2 & 3	2 & 3	Open	1 & 2
3.3v (CX M2)	2.8v	2 & 3	2 & 3	Open	2 & 3
3.3v (P55C)	2.8v	2 & 3	2 & 3	Open	2 & 3
3.3v (AM K5)	2.92v	2 & 3	2 & 3	2 & 3	2 & 3
3.3v	N/A	1 & 2	1 & 2	Open	Open
3.5v	N/A	1 & 2	1 & 2	2 & 3	Open

Note: Pins designated should be in the closed position.