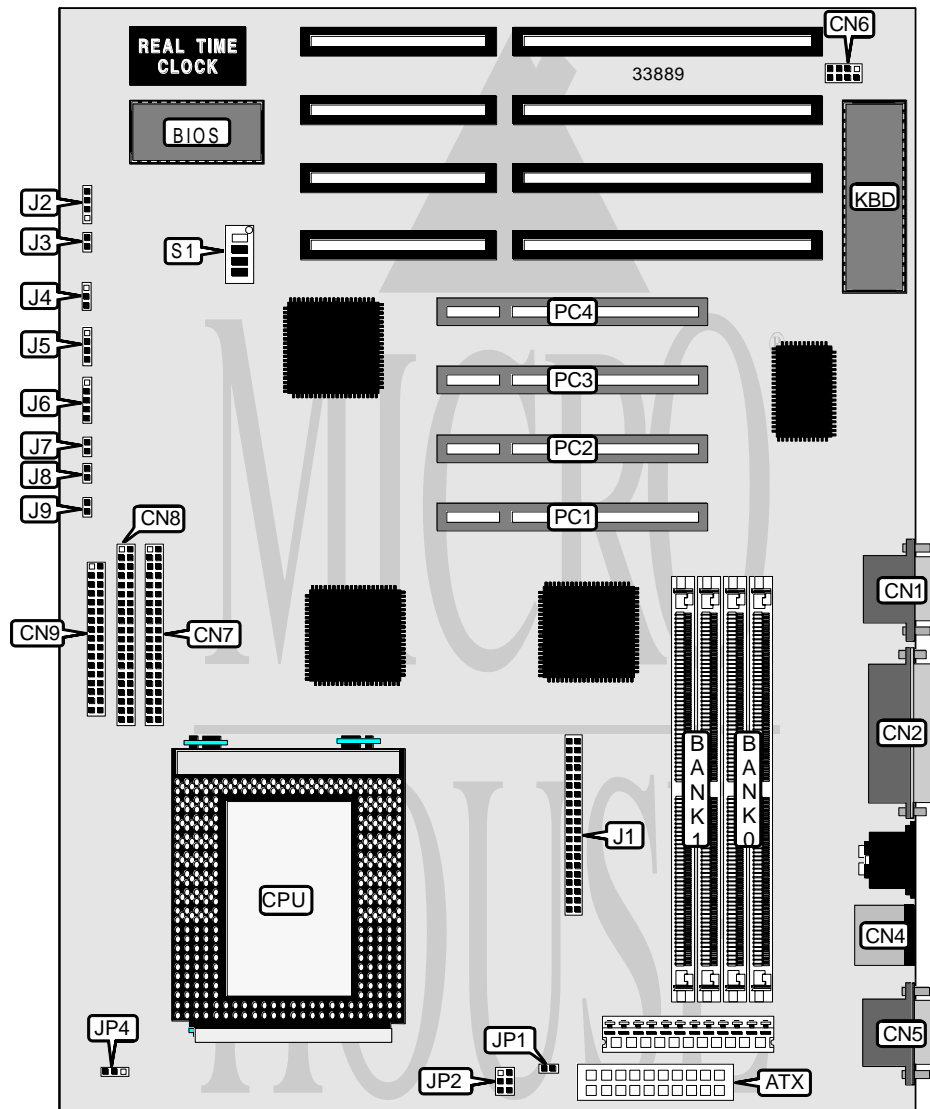


FAMOUS TECHNOLOGY CO., LTD.

MP - 686IX

Processor	Pentium Pro
Processor Speed	150/166/180/200/233/266MHz
Chip Set	Intel
Video Chip Set	None
Maximum Onboard Memory	512MB (EDO supported)
Maximum Video Memory	None
Cache	256/512KB (located on Pentium Pro CPU)
BIOS	Award
Dimensions	330mm x 218mm
I/O Options	32-bit PCI slots (4), floppy drive interface, green PC connector, IDE interfaces (2), parallel port, PS/2 mouse port, serial ports (2), IR connector, VRM connector, USB connector, ATX power connector, soft off power supply
NPU Options	None



Continued on next page. . .

FAMOUS TECHNOLOGY CO., LTD.

MP - 686IX

... continued from previous page

CONNECTIONS			
Purpose	Location	Purpose	Location
ATX power connector	ATX	Speaker	J2
Serial port 2	CN1	Reset switch	J3
Parallel port	CN2	Power LED	J4
PS/2 mouse port	CN4	IDE interface LED	J5
Serial port 1	CN5	IR connector	J6
USB connector (optional)	CN6	Green PC connector	J7
IDE interface 2	CN7	Soft off power supply	J8
IDE interface 1	CN8	Green PC LED	J9
Floppy drive interface	CN9	Chassis fan power	JP1
VRM connector	J1	32-bit PCI slots	PC1 - PC4

USER CONFIGURABLE SETTINGS		
Function	Label	Position
í Factory configured - do not alter	JP2	Unidentified
í Factory configured - do not alter	JP4	Unidentified

DRAM CONFIGURATION		
Size	Bank 0	Bank 1
8MB	(2) 1M x 36	None
16MB	(2) 2M x 36	None
16MB	(2) 1M x 36	(2) 1M x 36
24MB	(2) 2M x 36	(2) 1M x 36
32MB	(2) 4M x 36	None
32MB	(2) 2M x 36	(2) 2M x 36
40MB	(2) 4M x 36	(2) 1M x 36
48MB	(2) 4M x 36	(2) 2M x 36
64MB	(2) 8M x 36	None
64MB	(2) 4M x 36	(2) 4M x 36
72MB	(2) 8M x 36	(2) 1M x 36
80MB	(2) 8M x 36	(2) 2M x 36
96MB	(2) 8M x 36	(2) 4M x 36
128MB	(2) 16M x 36	None
128MB	(2) 8M x 36	(2) 8M x 36
136MB	(2) 16M x 36	(2) 1M x 36
144MB	(2) 16M x 36	(2) 2M x 36
160MB	(2) 16M x 36	(2) 4M x 36
192MB	(2) 16M x 36	(2) 8M x 36
256MB	(2) 32M x 36	None
256MB	(2) 16M x 36	(2) 16M x 36
264MB	(2) 32M x 36	(2) 1M x 36
272MB	(2) 32M x 36	(2) 2M x 36

Continued on next page. ...

FAMOUS TECHNOLOGY CO., LTD.
MP - 686IX

... continued from previous page

DRAM CONFIGURATION (CON'T)		
Size	Bank 0	Bank 1
288MB	(2) 32M x 36	(2) 4M x 36
320MB	(2) 32M x 36	(2) 8M x 36
384MB	(2) 32M x 36	(2) 16M x 36
512MB	(2) 32M x 36	(2) 32M x 36

Note: Board accepts EDO memory.

CACHE CONFIGURATION
Note: 256KB/512KB cache is located on the Pentium Pro CPU.

CPU SPEED SELECTION						
CPU speed	Clock speed	Multiplier	S1/1	S1/2	S1/3	S1/4
150MHz	60MHz	2.5x	On	On	Off	Off
166MHz	66MHz	2.5x	Off	On	Off	Off
180MHz	60MHz	3x	On	Off	On	Off
200MHz	66MHz	3x	Off	Off	On	Off
233MHz	66MHz	3.5x	Off	On	On	Off
266MHz	66MHz	4x	Off	Off	Off	On