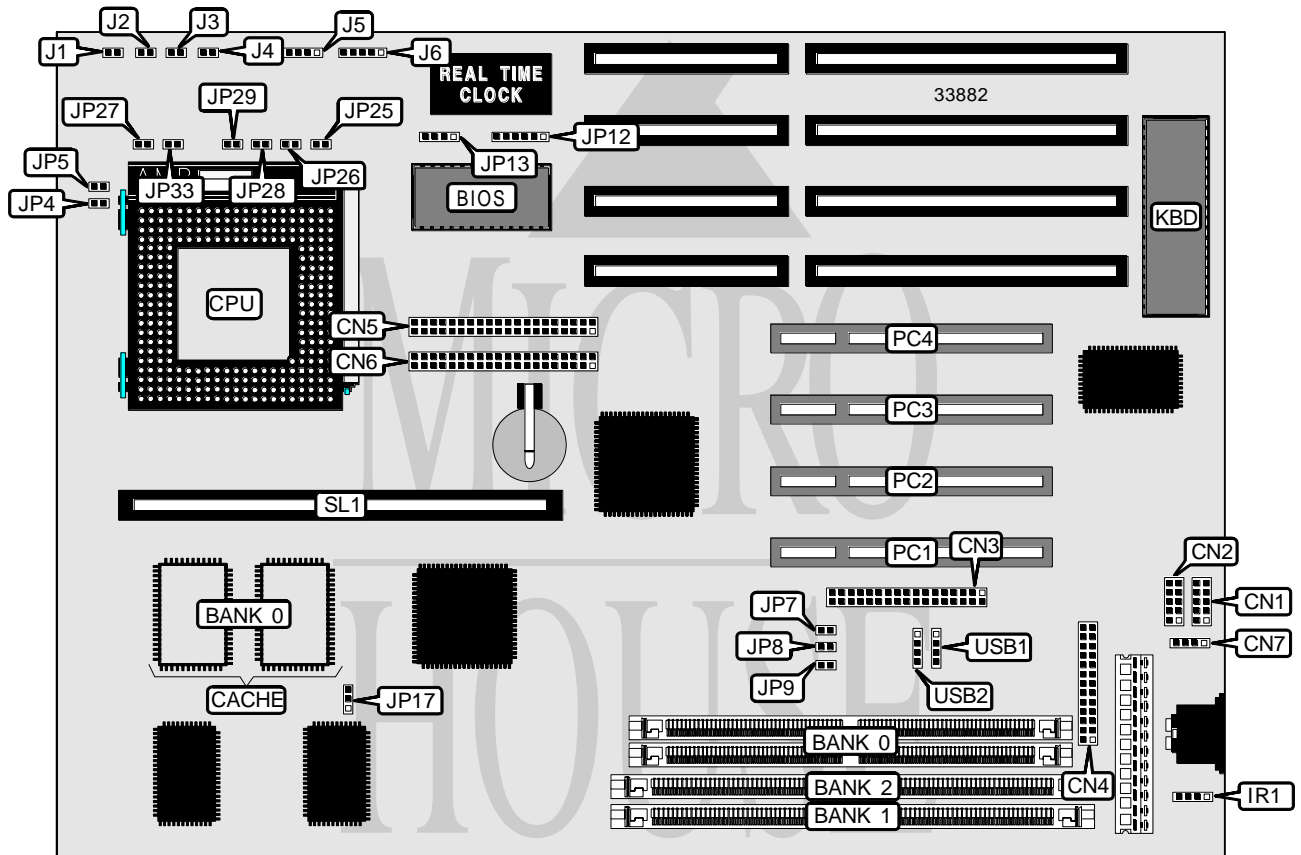


J-BOND COMPUTER SYSTEMS CORPORATION PCI500C-H2

Processor	CX M1/AM K5/Pentium
Processor Speed	75/83/90/100/120/133/150/166/180/200MHz
Chip Set	Intel
Video Chip Set	None
Maximum Onboard Memory	128MB (EDO supported)
Maximum Video Memory	None
Cache	256/512KB
BIOS	Award
Dimensions	287mm x 221mm
I/O Options	32-bit PCI slots (4), floppy drive interface, IDE interfaces (2), parallel port, PS/2 mouse interface, serial ports (2), cache slot, IR connector, USB connectors (2)
NPU Options	None



Continued on next page . . .

J-BOND COMPUTER SYSTEMS CORPORATION

PCI500C - H2

... continued from previous page

CONNECTIONS			
Purpose	Location	Purpose	Location
Serial port 1	CN1	Turbo switch	J2
Serial port 2	CN2	IDE interface LED	J3
Parallel port	CN3	Turbo LED	J4
Floppy drive interface	CN4	Speaker	J5
IDE interface 1	CN5	Power LED & keylock	J6
IDE interface 2	CN6	32-bit PCI slots	PC1 - PC4
PS/2 mouse interface	CN7	Cache slot	SL1
IR connector	IR1	USB connector 1	USB1
Reset switch	J1	USB connector 2	USB2

USER CONFIGURABLE SETTINGS		
Function	Label	Position
í Factory configured - do not alter	JP12	Pins 2 & 3, 5 & 6 closed
í CMOS memory normal operation	JP13	Pins 1 & 2 closed
CMOS memory clear	JP13	Pins 3 & 4 closed

DRAM/DIMM CONFIGURATION			
Size	Bank 0	Bank 1	Bank 2
8MB	(2) 1M x 32	None	None
16MB	(2) 2M x 32	None	None
32MB	(2) 4M x 32	None	None
64MB	(2) 8M x 32	None	None
8MB	None	(1) 1M x 64	None
16MB	None	(1) 1M x 64	(1) 1M x 64
24MB	None	(1) 2M x 64	(1) 1M x 64
32MB	None	(1) 4M x 64	None
32MB	None	(1) 2M x 64	(1) 2M x 64
64MB	None	(1) 8M x 64	None
64MB	None	(1) 4M x 64	(1) 4M x 64
72MB	None	(1) 8M x 64	(1) 1M x 64
80MB	None	(1) 8M x 64	(1) 2M x 64
96MB	None	(1) 8M x 64	(1) 4M x 64
128MB	None	(1) 8M x 64	(1) 8M x 64

Note: Board accepts EDO memory.

CACHE CONFIGURATION		
Size	Bank 0	SL1
256KB	(2) 32K x 32	Not installed
512KB (A)	(2) 64K x 32	Not installed
512KB (B)	(2) 32K x 32	256KB module installed

Continued on next page. . .

J-BOND COMPUTER SYSTEMS CORPORATION

PCI500C - H2

... continued from previous page

CACHE JUMPER CONFIGURATION	
Size	JP17
None	Any setting
256KB	Pins 2 & 3 closed
512KB (A)	Pins 2 & 3 closed
512KB (B)	Pins 1 & 2 closed

CPU SPEED SELECTION (CYRIX - IMISC616)							
CPU speed	Clock speed	Multiplier	JP4	JP5	JP7	JP8	JP9
100MHz	50MHz	2x	Closed	Open	Open	Open	Closed
110MHz	55MHz	2x	Closed	Open	Closed	Closed	Closed
120MHz	60MHz	2x	Closed	Open	Open	Closed	Open
133MHz	66MHz	2x	Closed	Open	Open	Open	Open

CPU SPEED SELECTION (CYRIX - IMISC610)							
CPU speed	Clock speed	Multiplier	JP4	JP5	JP7	JP8	JP9
100MHz	50MHz	2x	Closed	Open	Open	Closed	Closed
110MHz	55MHz	2x	Closed	Open	Open	Open	Closed
120MHz	60MHz	2x	Closed	Open	Open	Closed	Open
133MHz	66MHz	2x	Closed	Open	Open	Open	Open

CPU SPEED SELECTION (AMD - IMISC616)							
CPU speed	Clock speed	Multiplier	JP4	JP5	JP7	JP8	JP9
75MHz	50MHz	1.5x	Open	Open	Open	Open	Closed
83MHz	55MHz	1.5x	Open	Open	Closed	Closed	Closed
90MHz	60MHz	1.5x	Open	Open	Open	Closed	Open
100MHz	66MHz	1.5x	Open	Open	Open	Open	Open
120MHz	60MHz	2x	Closed	Open	Open	Closed	Open
133MHz	66MHz	2x	Closed	Open	Open	Open	Open
150MHz	60MHz	2.5x	Closed	Closed	Open	Closed	Open
166MHz	66MHz	2.5x	Closed	Closed	Open	Open	Open

CPU SPEED SELECTION (AMD - IMISC610)							
CPU speed	Clock speed	Multiplier	JP4	JP5	JP7	JP8	JP9
75MHz	50MHz	1.5x	Open	Open	Open	Closed	Closed
83MHz	55MHz	1.5x	Open	Open	Open	Open	Closed
90MHz	60MHz	1.5x	Open	Open	Open	Closed	Open
100MHz	66MHz	1.5x	Open	Open	Open	Open	Open
120MHz	60MHz	2x	Closed	Open	Open	Closed	Open
133MHz	66MHz	2x	Closed	Open	Open	Open	Open
150MHz	60MHz	2.5x	Closed	Closed	Open	Closed	Open
166MHz	66MHz	2.5x	Closed	Closed	Open	Open	Open

Continued on next page. . .

J-BOND COMPUTER SYSTEMS CORPORATION

PCI500C - H 2

... continued from previous page

CPU SPEED SELECTION (INTEL - IMISC616)							
CPU speed	Clock speed	Multiplier	JP4	JP5	JP7	JP8	JP9
75MHz	50MHz	1.5x	Open	Open	Open	Open	Closed
90MHz	60MHz	1.5x	Open	Open	Open	Closed	Open
100MHz	66MHz	1.5x	Open	Open	Open	Open	Open
120MHz	60MHz	2x	Closed	Open	Open	Closed	Open
133MHz	66MHz	2x	Closed	Open	Open	Open	Open
150MHz	60MHz	2.5x	Closed	Closed	Open	Closed	Open
166MHz	66MHz	2.5x	Closed	Closed	Open	Open	Open
180MHz	60MHz	3x	Open	Closed	Open	Closed	Open
200MHz	66MHz	3x	Open	Closed	Open	Open	Open

CPU SPEED SELECTION (INTEL - IMISC610)							
CPU speed	Clock speed	Multiplier	JP4	JP5	JP7	JP8	JP9
75MHz	50MHz	1.5x	Open	Open	Open	Closed	Closed
90MHz	60MHz	1.5x	Open	Open	Open	Closed	Open
100MHz	66MHz	1.5x	Open	Open	Open	Open	Open
120MHz	60MHz	2x	Closed	Open	Open	Closed	Open
133MHz	66MHz	2x	Closed	Open	Open	Open	Open
150MHz	60MHz	2.5x	Closed	Closed	Open	Closed	Open
166MHz	66MHz	2.5x	Closed	Closed	Open	Open	Open
180MHz	60MHz	3x	Open	Closed	Open	Closed	Open
200MHz	66MHz	3x	Open	Closed	Open	Open	Open

CPU VOLTAGE SELECTION	
Voltage	JP33
3.45v	Open
3.6v	Closed

CPU CORE VOLTAGE SELECTION					
Voltage	JP25	JP26	JP27	JP28	JP29
3.6V	Open	Closed	Open	Open	Open
3.45V	Open	Open	Open	Open	Open
2.9V	Open	Open	Closed	Closed	Open
2.7V	Open	Open	Closed	Closed	Closed
2.5V	Closed	Open	Closed	Open	Open