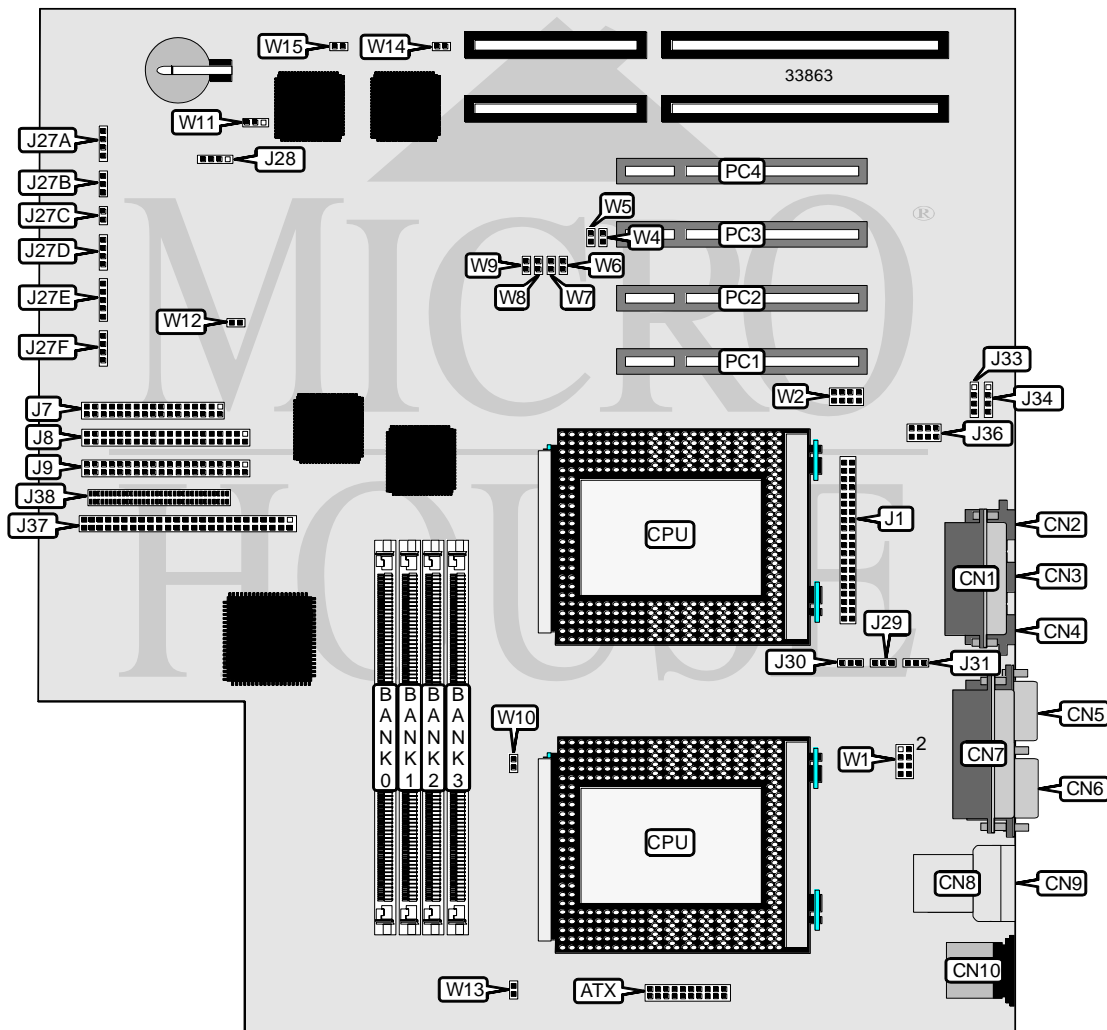


MICRONICS COMPUTERS, INC.

W 6 - L I

Processor	Pentium Pro
Processor Speed	150/166/180/200MHz
Chip Set	Intel
Video Chip Set	None
Maximum Onboard Memory	512MB (EDO supported)
Maximum Video Memory	None
Cache	256/512KB (located on Pentium Pro CPU)
BIOS	Phoenix
Dimensions	330mm x 218mm
I/O Options	32-bit PCI slots (4), CD-ROM connector, floppy drive interface, game port, green PC connector, IDE interfaces (2), Fast SCSI interface, Ultra Wide SCSI interface, parallel port, PS/2 mouse port, serial ports (2), IR connectors (2), USB connectors (2), ATX power connector, microphone in connector, line out connector, line in connector, modem/telephony connector, wavetable connector, VRM connector
NPU Options	None



Continued on next page. . .

MICRONICS COMPUTERS, INC.

W 6 - LI

... continued from previous page

CONNECTIONS			
Purpose	Location	Purpose	Location
ATX power connector	ATX	Reset switch	J27B
Game port	CN1	Power LED	J27C
Microphone in connector	CN2	IDE interface LED	J27D
Line in connector	CN3	IR connector	J27E
Line out connector	CN4	Green PC connector	J27F
Serial port 1	CN5	IR connector	J28
Serial port 2	CN6	CPU fan	J29
Parallel port	CN7	CPU fan	J30
USB connector 1	CN8	Chassis fan power	J31
USB connector 2	CN9	CD-ROM connector	J33
PS/2 mouse port	CN10	Modem/telephony connector	J34
VRM connector	J1	Wavetable connector	J36
Floppy drive interface	J7	Fast SCSI interface	J37
IDE interface 1	J8	Ultra Wide SCSI interface	J38
IDE interface 2	J9	32-bit PCI slots	PC1 - PC4
Speaker	J27A		

Note: Do not use both IR connectors at the same time.

USER CONFIGURABLE SETTINGS		
Function	Label	Position
í Host Bus Agent normal operation	W10	Open
Host Bus Agent reserved	W10	Closed
í CMOS memory normal operation	W11	Pins 1 & 2 closed
CMOS memory clear	W11	Pins 2 & 3 closed
í System power supply enabled	W13	Open
System power supply disabled	W13	Closed
í On board sound enabled	W14	Closed
On board sound disabled	W14	Open
í SCSI enabled	W15	Closed
SCSI disabled	W15	Open

DIMM CONFIGURATION				
Size	Bank 0	Bank 1	Bank 2	Bank 3
8MB	(1) 1M x 64	None	None	None
16MB	(1) 2M x 64	None	None	None
16MB	(1) 1M x 64	(1) 1M x 64	None	None
24MB	(1) 2M x 64	(1) 1M x 64	None	None
24MB	(1) 1M x 64	(1) 1M x 64	(1) 1M x 64	None
32MB	(1) 2M x 64	(1) 2M x 64	None	None
32MB	(1) 2M x 64	(1) 1M x 64	(1) 1M x 64	None
32MB	(1) 4M x 64	None	None	None
32MB	(1) 1M x 64	(1) 1M x 64	(1) 1M x 64	(1) 1M x 64

Continued on next page. ...

MICRONICS COMPUTERS, INC.

W 6 - LI

... continued from previous page

DIMM CONFIGURATION (CON'T)				
Size	Bank 0	Bank 1	Bank 2	Bank 3
40MB	(1) 2M x 64	(1) 2M x 64	(1) 1M x 64	None
40MB	(1) 2M x 64	(1) 1M x 64	(1) 1M x 64	(1) 1M x 64
40MB	(1) 4M x 64	(1) 1M x 64	None	None
48MB	(1) 2M x 64	(1) 2M x 64	(1) 2M x 64	None
48MB	(1) 2M x 64	(1) 2M x 64	(1) 1M x 64	(1) 1M x 64
48MB	(1) 4M x 64	(1) 2M x 64	None	None
48MB	(1) 4M x 64	(1) 1M x 64	(1) 1M x 64	None
56MB	(1) 2M x 64	(1) 2M x 64	(1) 2M x 64	(1) 1M x 64
56MB	(1) 4M x 64	(1) 2M x 64	(1) 1M x 64	None
56MB	(1) 4M x 64	(1) 1M x 64	(1) 1M x 64	(1) 1M x 64
64MB	(1) 2M x 64	(1) 2M x 64	(1) 2M x 64	(1) 2M x 64
64MB	(1) 4M x 64	(1) 2M x 64	(1) 2M x 64	None
64MB	(1) 4M x 64	(1) 2M x 64	(1) 1M x 64	(1) 1M x 64
64MB	(1) 4M x 64	(1) 4M x 64	None	None
64MB	(1) 8M x 64	None	None	None
80MB	(1) 4M x 64	(1) 2M x 64	(1) 2M x 64	(1) 2M x 64
80MB	(1) 4M x 64	(1) 4M x 64	(1) 2M x 64	None
80MB	(1) 4M x 64	(1) 4M x 64	(1) 1M x 64	(1) 1M x 64
80MB	(1) 8M x 64	(1) 2M x 64	None	None
80MB	(1) 8M x 64	(1) 1M x 64	(1) 1M x 64	None
96MB	(1) 4M x 64	(1) 4M x 64	(1) 2M x 64	(1) 2M x 64
96MB	(1) 4M x 64	(1) 4M x 64	(1) 4M x 64	None
96MB	(1) 8M x 64	(1) 2M x 64	(1) 2M x 64	None
96MB	(1) 8M x 64	(1) 2M x 64	(1) 1M x 64	(1) 1M x 64
96MB	(1) 8M x 64	(1) 4M x 64	None	None
112MB	(1) 4M x 64	(1) 4M x 64	(1) 4M x 64	(1) 2M x 64
112MB	(1) 8M x 64	(1) 2M x 64	(1) 2M x 64	(1) 2M x 64
112MB	(1) 8M x 64	(1) 4M x 64	(1) 2M x 64	None
112MB	(1) 8M x 64	(1) 4M x 64	(1) 1M x 64	(1) 1M x 64
128MB	(1) 16M x 64	None	None	None
128MB	(1) 4M x 64	(1) 4M x 64	(1) 4M x 64	(1) 4M x 64
128MB	(1) 8M x 64	(1) 4M x 64	(1) 2M x 64	(1) 2M x 64
128MB	(1) 8M x 64	(1) 4M x 64	(1) 4M x 64	None
128MB	(1) 8M x 64	(1) 8M x 64	None	None
160MB	(1) 16M x 64	(1) 2M x 64	(1) 2M x 64	None
160MB	(1) 16M x 64	(1) 2M x 64	(1) 1M x 64	(1) 1M x 64
160MB	(1) 16M x 64	(1) 4M x 64	None	None
160MB	(1) 8M x 64	(1) 4M x 64	(1) 4M x 64	(1) 4M x 64
160MB	(1) 8M x 64	(1) 8M x 64	(1) 2M x 64	(1) 2M x 64
160MB	(1) 8M x 64	(1) 8M x 64	(1) 4M x 64	None
192MB	(1) 16M x 64	(1) 4M x 64	(1) 2M x 64	(1) 2M x 64

Continued on next page. . .

MICRONICS COMPUTERS, INC.
W 6 - L I

... continued from previous page

DIMM CONFIGURATION (CON'T)				
Size	Bank 0	Bank 1	Bank 2	Bank 3
192MB	(1) 16M x 64	(1) 4M x 64	(1) 4M x 64	None
192MB	(1) 16M x 64	(1) 8M x 64	None	None
192MB	(1) 8M x 64	(1) 8M x 64	(1) 4M x 64	(1) 4M x 64
192MB	(1) 8M x 64	(1) 8M x 64	(1) 8M x 64	None
224MB	(1) 16M x 64	(1) 4M x 64	(1) 4M x 64	(1) 4M x 64
224MB	(1) 16M x 64	(1) 8M x 64	(1) 2M x 64	(1) 2M x 64
224MB	(1) 16M x 64	(1) 8M x 64	(1) 4M x 64	None
224MB	(1) 8M x 64	(1) 8M x 64	(1) 8M x 64	(1) 4M x 64
256MB	(1) 16M x 64	(1) 16M x 64	None	None
256MB	(1) 16M x 64	(1) 8M x 64	(1) 4M x 64	(1) 4M x 64
256MB	(1) 16M x 64	(1) 8M x 64	(1) 8M x 64	None
256MB	(1) 8M x 64	(1) 8M x 64	(1) 8M x 64	(1) 8M x 64
288MB	(1) 16M x 64	(1) 16M x 64	(1) 2M x 64	(1) 2M x 64
288MB	(1) 16M x 64	(1) 16M x 64	(1) 4M x 64	None
288MB	(1) 16M x 64	(1) 8M x 64	(1) 8M x 64	(1) 4M x 64
320MB	(1) 16M x 64	(1) 16M x 64	(1) 4M x 64	(1) 4M x 64
320MB	(1) 16M x 64	(1) 16M x 64	(1) 8M x 64	None
320MB	(1) 16M x 64	(1) 8M x 64	(1) 8M x 64	(1) 8M x 64
384MB	(1) 16M x 64	(1) 16M x 64	(1) 16M x 64	None
384MB	(1) 16M x 64	(1) 16M x 64	(1) 8M x 64	(1) 8M x 64
448MB	(1) 16M x 64	(1) 16M x 64	(1) 16M x 64	(1) 8M x 64
512MB	(1) 16M x 64	(1) 16M x 64	(1) 16M x 64	(1) 16M x 64

Note: Board accepts EDO memory. x 72 DIMMs may also be used but not if x 64 DIMMs are installed.

CACHE CONFIGURATION
Note: 256KB/512KB cache is located on the Pentium Pro CPU.

CPU SPEED SELECTION						
CPU speed	Clock speed	Multiplier	W4	W5	W6	W7
150MHz	60MHz	2.5x	Closed	Open	Closed	Closed
166MHz	66MHz	2.5x	Open	Closed	Closed	Closed
180MHz	60MHz	3x	Closed	Open	Closed	Closed
200MHz	66MHz	3x	Open	Closed	Closed	Closed

CPU SPEED SELECTION (CON'T)					
CPU speed	Clock speed	Multiplier	W8	W9	W12
150MHz	60MHz	2.5x	Closed	Open	Closed
166MHz	66MHz	2.5x	Closed	Open	Closed
180MHz	60MHz	3x	Open	Closed	Closed
200MHz	66MHz	3x	Open	Closed	Closed

Continued on next page. . .

MICRONICS COMPUTERS, INC.

W 6 - L I

... continued from previous page

CPU VOLTAGE SELECTION		
Voltage	W1	W2
iVID enabled	Open	Open
2.9v	Pins 1 & 2, 7 & 8 closed	Pins 1 & 2, 7 & 8 closed
3.1v	Pins 1 & 2, 5 & 6, 7 & 8 closed	Pins 1 & 2, 5 & 6, 7 & 8 closed
3.3v	Pins 1 & 2, 3 & 4, 7 & 8 closed	Pins 1 & 2, 3 & 4, 7 & 8 closed