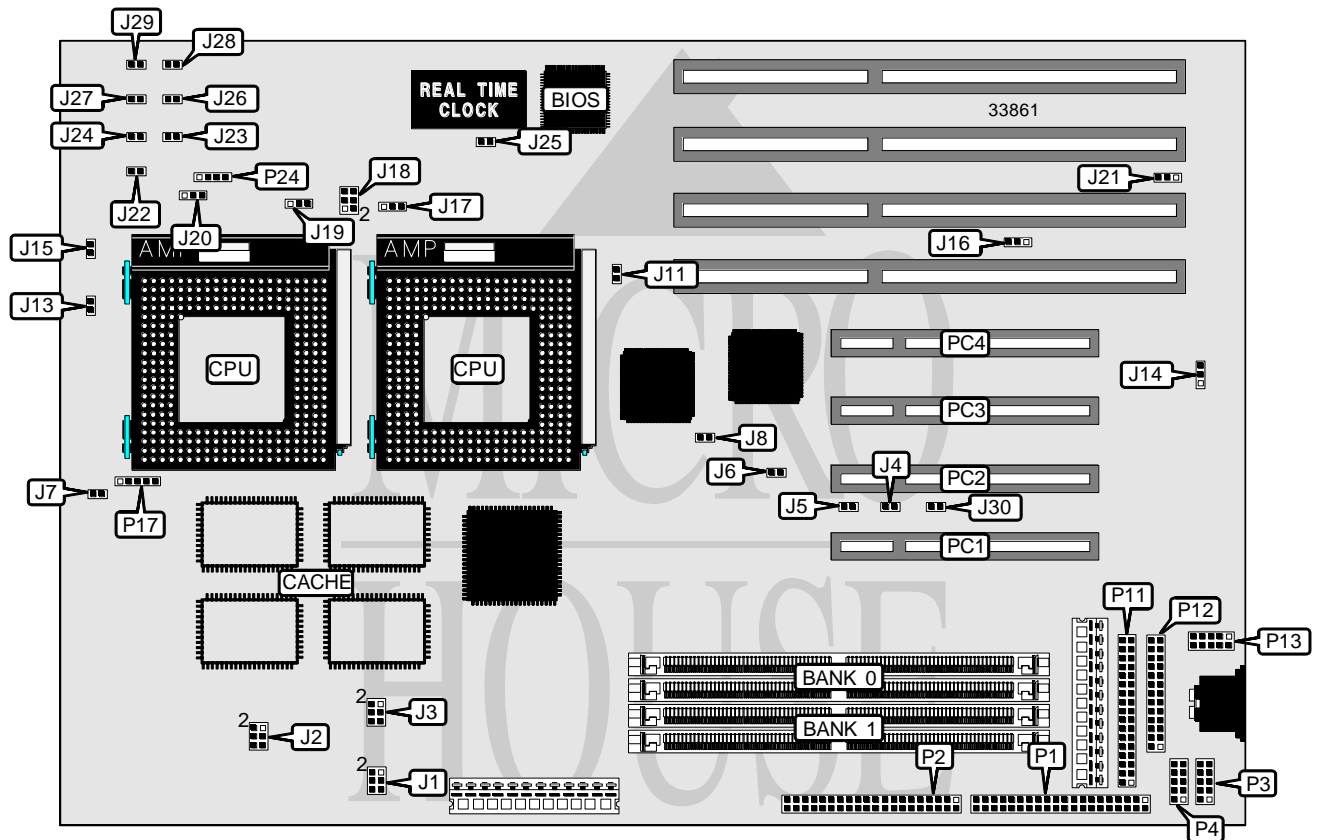


AMERICAN MEGATRENDS, INC. TITAN III

Processor	Pentium
Processor Speed	90/100/120/133/150/166MHz
Chip Set	Unidentified
Video Chip Set	None
Maximum Onboard Memory	256MB (EDO supported)
Maximum Video Memory	None
Cache	512KB
BIOS	AMI
Dimensions	330mm x 218mm
I/O Options	32-bit PCI slots (4), floppy drive interface, green PC connector, IDE interfaces (2), parallel port, PS/2 mouse interface, serial ports (2)
NPU Options	None



Continued on next page. . .

AMERICAN MEGATRENDS, INC.

TITAN III

... continued from previous page

CONNECTIONS			
Purpose	Location	Purpose	Location
IDE interface LED	J22	Serial port 2	P3
Reset switch	J24	Serial port 1	P4
Chassis fan power	J25	Floppy drive interface	P11
Green PC connector	J26	Parallel port	P12
Chassis fan power	J27	PS/2 mouse interface	P13
Turbo LED	J29	Power LED & keylock	P17
IDE interface 1	P1	Speaker	P24
IDE interface 2	P2	32-bit PCI slots	PCI - PC4

USER CONFIGURABLE SETTINGS		
Function	Label	Position
í Factory configured - do not alter	J5	Unidentified
í Factory configured - do not alter	J11	Unidentified
í Parallel port IRQ select IRQ7	J14	Pins 1 & 2 closed
Parallel port IRQ select IRQ5	J14	Pins 2 & 3 closed
í Factory configured - do not alter	J17	Pins 2 & 3 closed
APIC enabled with two CPUs installed	J19	Pins 1 & 2 closed
APIC disabled with one CPU installed	J19	Pins 2 & 3 closed
í Factory configured - do not alter	J20	Unidentified
PS/2 mouse IRQ 12 enabled	J23	Closed
PS/2 mouse IRQ 12 disabled	J23	Open
í CMOS memory normal operation	J28	Open
CMOS memory clear	J28	Closed

DRAM CONFIGURATION		
Size	Bank 0	Bank 1
8MB	(2) 1M x 36	None
16MB	(2) 2M x 36	None
16MB	(2) 1M x 36	(2) 1M x 36
24MB	(2) 2M x 36	(2) 1M x 36
32MB	(2) 4M x 36	None
32MB	(2) 2M x 36	(2) 2M x 36
40MB	(2) 4M x 36	(2) 1M x 36
48MB	(2) 2M x 36	(2) 4M x 36
64MB	(2) 8M x 36	None
64MB	(2) 4M x 36	(2) 4M x 36
72MB	(2) 8M x 36	(2) 1M x 36
80MB	(2) 2M x 36	(2) 8M x 36
96MB	(2) 8M x 36	(2) 4M x 36
128MB	(2) 16M x 36	None
128MB	(2) 8M x 36	(2) 8M x 36
136MB	(2) 16M x 36	(2) 1M x 36

Continued on next page. . .

AMERICAN MEGATRENDS, INC.

TITAN III

... continued from previous page

DRAM CONFIGURATION (CON'T)		
Size	Bank 0	Bank 1
144MB	(2) 16M x 36	(2) 2M x 36
160MB	(2) 16M x 36	(2) 4M x 36
192MB	(2) 16M x 36	(2) 8M x 36
256MB	(2) 32M x 36	None
256MB	(2) 16M x 36	(2) 16M x 36

Note: Board accepts EDO memory. Board also accepts x 32 SIMMs. Do not use 16M x 36 SIMMs that have 36 chips.

CACHE CONFIGURATION
Note: 512KB cache is factory installed and is not configurable.

CPU SPEED SELECTION							
CPU speed	Clock speed	Multiplier	J6	J7	J8	J13	J15
90MHz	60MHz	1.5x	Closed	Open	Open	Open	Closed
100MHz	66MHz	1.5x	Open	Open	Closed	Open	Open
120MHz	60MHz	2x	Closed	Open	Open	Closed	Closed
133MHz	66MHz	2x	Open	Open	Closed	Closed	Open
150MHz	60MHz	2.5x	Closed	Closed	Open	Closed	Closed
166MHz	66MHz	2.5x	Open	Closed	Closed	Closed	Open

CPU VOLTAGE SELECTION				
Voltage	J1	J2	J3	J18
Regulator	Open	1 & 2, 3 & 4, 5 & 6	1 & 2, 3 & 4, 5 & 6	Open
3.3v power	1 & 2, 3 & 4, 5 & 6	Open	Open	1 & 2, 3 & 4, 5 & 6

Note: Pins designated should be in the closed position.

DMA CHANNEL SELECTION		
Channel	J16	J21
None	Open	Open
1	Pins 1 & 2 closed	Pins 1 & 2 closed
3	Pins 2 & 3 closed	Pins 2 & 3 closed

IDE BUS MASTER SELECTION		
Setting	J4	J30
Enabled	Closed	Closed
Disabled	Open	Open