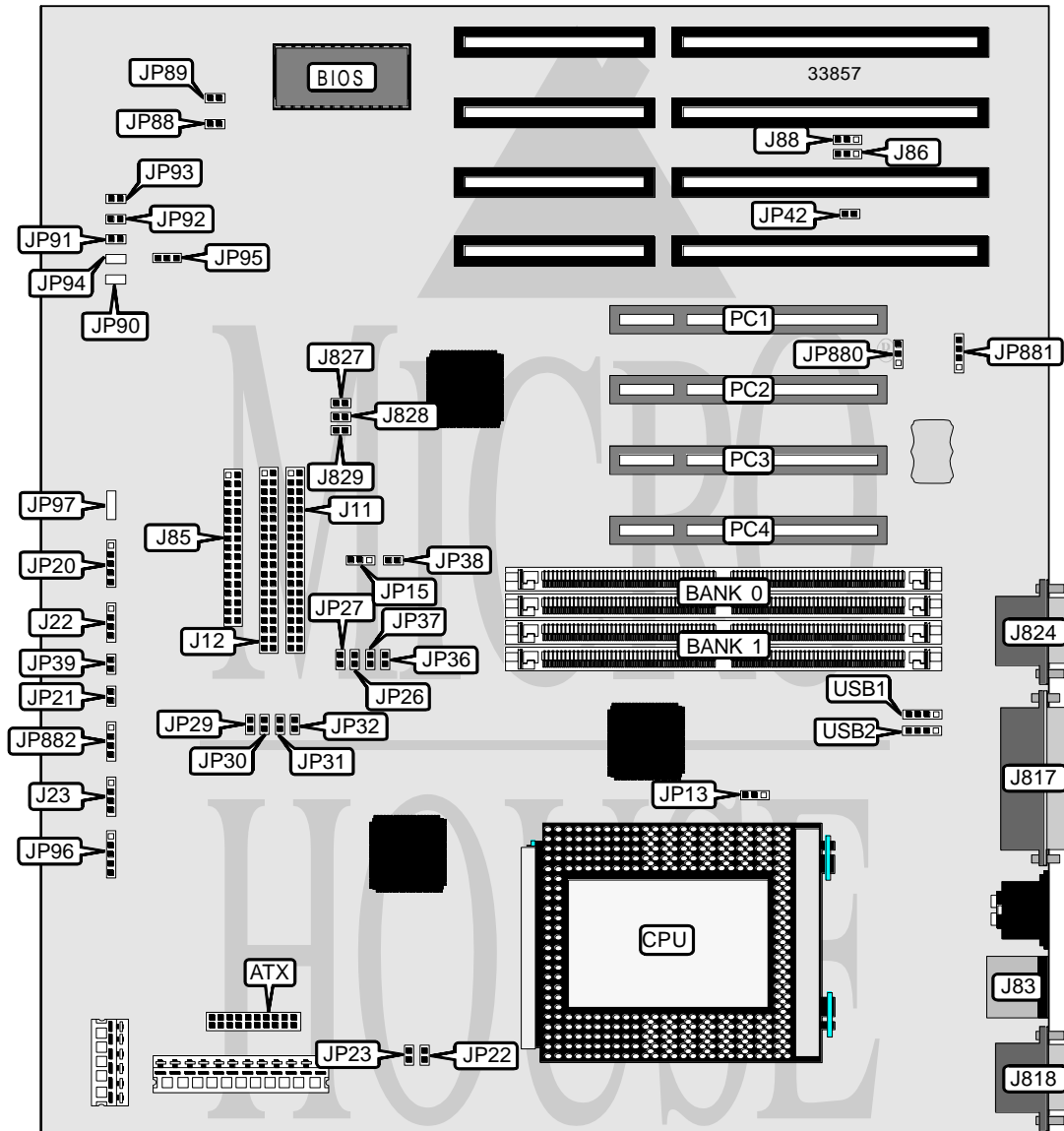


# SUPER MICRO P 6 S N A

<b>Processor</b>	Pentium Pro
<b>Processor Speed</b>	150/166/180/200MHz
<b>Chip Set</b>	Intel
<b>Video Chip Set</b>	None
<b>Maximum Onboard Memory</b>	512MB (EDO supported)
<b>Maximum Video Memory</b>	None
<b>Cache</b>	256/512KB (located on Pentium Pro CPU)
<b>BIOS</b>	AMI
<b>Dimensions</b>	305mm x 249mm
<b>I/O Options</b>	32-bit PCI slots (4), floppy drive interface, green PC connector, IDE interfaces (2), parallel port, PS/2 mouse port, serial ports (2), IR connector, USB connectors (2), ATX power connector, power on connector
<b>NPU Options</b>	None





# SUPER MICRO

## P 6 S N A

... continued from previous page

CONNECTIONS			
Purpose	Location	Purpose	Location
ATX power connector	ATX	Green PC connector	JP39
IDE interface 1	J11	Buzzer	JP89
IDE interface 2	J12	Chassis fan power	JP91
Speaker	J22	Chassis fan power	JP92
IDE interface LED	J23	Chassis fan power	JP93
PS/2 mouse port	J83	IR connector	JP96
Floppy drive interface	J85	External battery	JP881
Parallel port	J817	Power on connector	JP882
Serial port 1	J818	32-bit PCI slots	PC1- PC4
Serial port 2	J824	USB connector 1	USB1
Power LED & keylock	JP20	USB connector 2	USB2
Reset switch	JP21		

USER CONFIGURABLE SETTINGS		
Function	Label	Position
í Factory configured - do not alter	J86	Pins 1 & 2 closed
í Factory configured - do not alter	J88	Pins 1 & 2 closed
í Factory configured - do not alter	J827	Closed
í Factory configured - do not alter	J828	Closed
í Factory configured - do not alter	J829	Closed
í Factory configured - do not alter	JP13	Pins 2 & 3 closed
í Factory configured - do not alter	JP15	Pins 2 & 3 closed
í Factory configured - do not alter	JP22	Open
í Factory configured - do not alter	JP23	Open
í Factory configured - do not alter	JP26	Open
í Factory configured - do not alter	JP27	Closed
í Factory configured - do not alter	JP38	Open
í Factory configured - do not alter	JP88	Open
ISA CLK = PCI CLK/4	JP42	Closed
ISA CLK = PCI CLK/3	JP42	Open
í Factory configured - do not alter	JP90	Unidentified
í Factory configured - do not alter	JP94	Unidentified
í Factory configured - do not alter	JP97	Unidentified
í CMOS memory normal operation	JP880	Pins 1 & 2 closed
CMOS memory clear	JP880	Pins 2 & 3 closed

DRAM CONFIGURATION		
Size	Bank 0	Bank 1
8MB	(2) 1M x 36	None
16MB	(2) 2M x 36	None
16MB	(2) 1M x 36	(2) 1M x 36
24MB	(2) 2M x 36	(2) 1M x 36

Continued on next page. . .

# SUPER MICRO P 6 S N A

... continued from previous page

DRAM CONFIGURATION (CON'T)		
Size	Bank 0	Bank 1
32MB	(2) 4M x 36	None
32MB	(2) 2M x 36	(2) 2M x 36
40MB	(2) 4M x 36	(2) 1M x 36
48MB	(2) 2M x 36	(2) 4M x 36
64MB	(2) 8M x 36	None
64MB	(2) 4M x 36	(2) 4M x 36
72MB	(2) 8M x 36	(2) 1M x 36
80MB	(2) 2M x 36	(2) 8M x 36
96MB	(2) 8M x 36	(2) 4M x 36
128MB	(2) 16M x 36	None
128MB	(2) 8M x 36	(2) 8M x 36
136MB	(2) 16M x 36	(2) 1M x 36
144MB	(2) 16M x 36	(2) 2M x 36
160MB	(2) 16M x 36	(2) 4M x 36
192MB	(2) 16M x 36	(2) 8M x 36
256MB	(2) 32M x 36	None
256MB	(2) 16M x 36	(2) 16M x 36
264MB	(2) 32M x 36	(2) 1M x 36
272MB	(2) 32M x 36	(2) 2M x 36
288MB	(2) 32M x 36	(2) 4M x 36
320MB	(2) 32M x 36	(2) 8M x 36
384MB	(2) 32M x 36	(2) 16M x 36
512MB	(2) 32M x 36	(2) 32M x 36

Note: Board accepts EDO memory. Board also accepts x 32 SIMMs. Banks are interchangeable.

CACHE CONFIGURATION
Note: 256KB/512KB cache is located on the Pentium Pro CPU.

CPU SPEED SELECTION						
Speed	JP29	JP30	JP31	JP32	JP36	JP37
150MHz	Open	Closed	Closed	Closed	Closed	Open
166MHz	Open	Closed	Closed	Closed	Open	Closed
180MHz	Closed	Open	Closed	Closed	Closed	Open
200MHz	Closed	Open	Closed	Closed	Open	Closed

THERMAL CONTROL SELECTION		
Turn on	Shut down	JP95
55	37	Pins 1 & 2 closed
64	50	Pins 2 & 3 closed
72	43	Open

Note: Temperature is in Celsius.