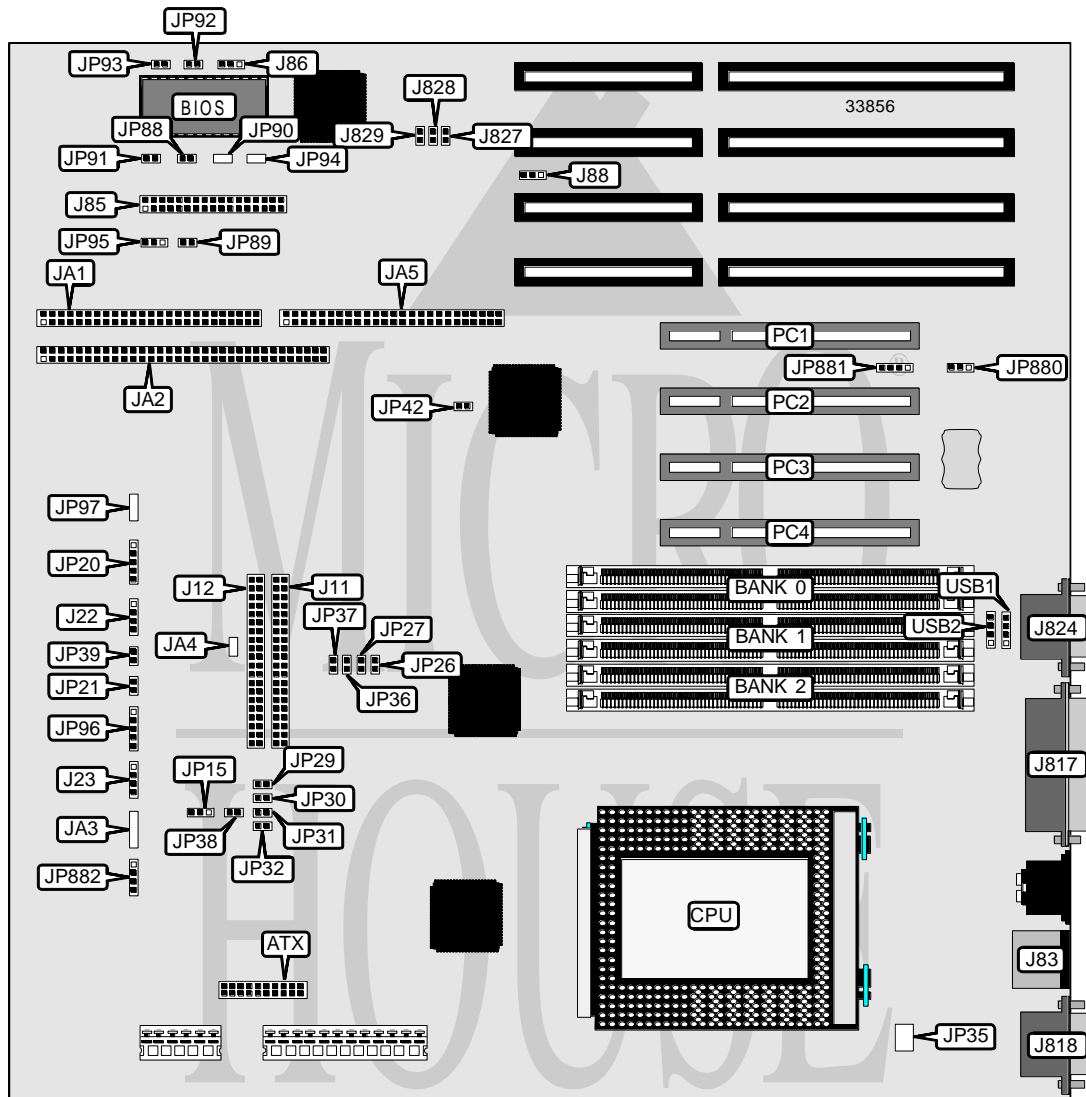


SUPER MICRO P6SAS

Processor	Pentium Pro
Processor Speed	150/166/180/200MHz
Chip Set	Intel
Video Chip Set	None
Maximum Onboard Memory	768MB (EDO supported)
Maximum Video Memory	None
Cache	256/512KB (located on Pentium Pro CPU)
BIOS	AMI
Dimensions	305mm x 249mm
I/O Options	32-bit PCI slots (4), floppy drive interface, green PC connector, IDE interfaces (2), SCSI interfaces (2), parallel port, PS/2 mouse port, serial ports (2), IR connector, USB connectors (2), ATX power connector, power on connector
NPU Options	None



Continued on next page . . .

SUPER MICRO

P 6 S A S

... continued from previous page

CONNECTIONS			
Purpose	Location	Purpose	Location
ATX power connector	ATX	Power LED & keylock	JP20
IDE interface 1	J11	Reset switch	JP21
IDE interface 2	J12	Green PC connector	JP39
Speaker	J22	Buzzer	JP89
IDE interface LED	J23	Chassis fan power	JP91
PS/2 mouse port	J83	Chassis fan power	JP92
Floppy drive interface	J85	Chassis fan power	JP93
Parallel port	J817	IR connector	JP96
Serial port 1	J818	External battery	JP881
Serial port 2	J824	Power on connector	JP882
SCSI interface	JA1	32-bit PCI slots	PC1- PC4
SCSI interface	JA2	USB connector 1	USB1
SCSI interface	JA5	USB connector 2	USB2

USER CONFIGURABLE SETTINGS		
Function	Label	Position
í Factory configured - do not alter	J86	Pins 1 & 2 closed
í Factory configured - do not alter	J88	Pins 1 & 2 closed
í Factory configured - do not alter	J827	Closed
í Factory configured - do not alter	J828	Closed
í Factory configured - do not alter	J829	Closed
í Factory configured - do not alter	JA3	Unidentified
í Factory configured - do not alter	JA4	Unidentified
í Factory configured - do not alter	JP13	Pins 2 & 3 closed
í Factory configured - do not alter	JP15	Pins 2 & 3 closed
í Factory configured - do not alter	JP22	Open
í Factory configured - do not alter	JP23	Open
í Factory configured - do not alter	JP26	Open
í Factory configured - do not alter	JP27	Closed
í Factory configured - do not alter	JP35	Unidentified
í Factory configured - do not alter	JP38	Open
í Factory configured - do not alter	JP88	Open
ISA CLK = PCI CLK/4	JP42	Closed
ISA CLK = PCI CLK/3	JP42	Open
í Factory configured - do not alter	JP90	Unidentified
í Factory configured - do not alter	JP94	Unidentified
í Factory configured - do not alter	JP97	Unidentified
í CMOS memory normal operation	JP880	Pins 1 & 2 closed
CMOS memory clear	JP880	Pins 2 & 3 closed
Note: The location of JP13, JP22 & JP23 are unidentified.		

Continued on next page. . .

SUPER MICRO P6SAS

... continued from previous page

DRAM CONFIGURATION			
Size	Bank 0	Bank 1	Bank 2
8MB	(2) 1M x 32	None	None
16MB	(2) 2M x 32	None	None
16MB	(2) 1M x 32	(2) 1M x 32	None
32MB	(2) 4M x 32	None	None
32MB	(2) 2M x 32	(2) 2M x 32	None
64MB	(2) 8M x 32	None	None
64MB	(2) 4M x 32	(2) 4M x 32	None
128MB	(2) 8M x 32	(2) 8M x 32	None
128MB	(2) 16M x 32	None	None
192MB	(2) 8M x 32	(2) 8M x 32	(2) 8M x 32
256MB	(2) 16M x 32	(2) 16M x 32	None
256MB	(2) 32M x 32	None	None
384MB	(2) 16M x 32	(2) 16M x 32	(2) 16M x 32
512MB	(2) 32M x 32	(2) 32M x 32	None
768MB	(2) 32M x 32	(2) 32M x 32	(2) 32M x 32

Note: Board accepts EDO memory. Board also accepts x 36 SIMMs..

CACHE CONFIGURATION
Note: 256KB/512KB cache is located on the Pentium Pro CPU.

CPU SPEED SELECTION						
Speed	JP29	JP30	JP31	JP32	JP36	JP37
150MHz	Open	Closed	Closed	Closed	Closed	Open
166MHz	Open	Closed	Closed	Closed	Open	Closed
180MHz	Closed	Open	Closed	Closed	Closed	Open
200MHz	Closed	Open	Closed	Closed	Open	Closed

THERMAL CONTROL SELECTION		
Turn on	Shut down	JP95
55	37	Pins 1 & 2 closed
64	50	Pins 2 & 3 closed
í 72	43	Open

Note: Temperature is in Celsius.