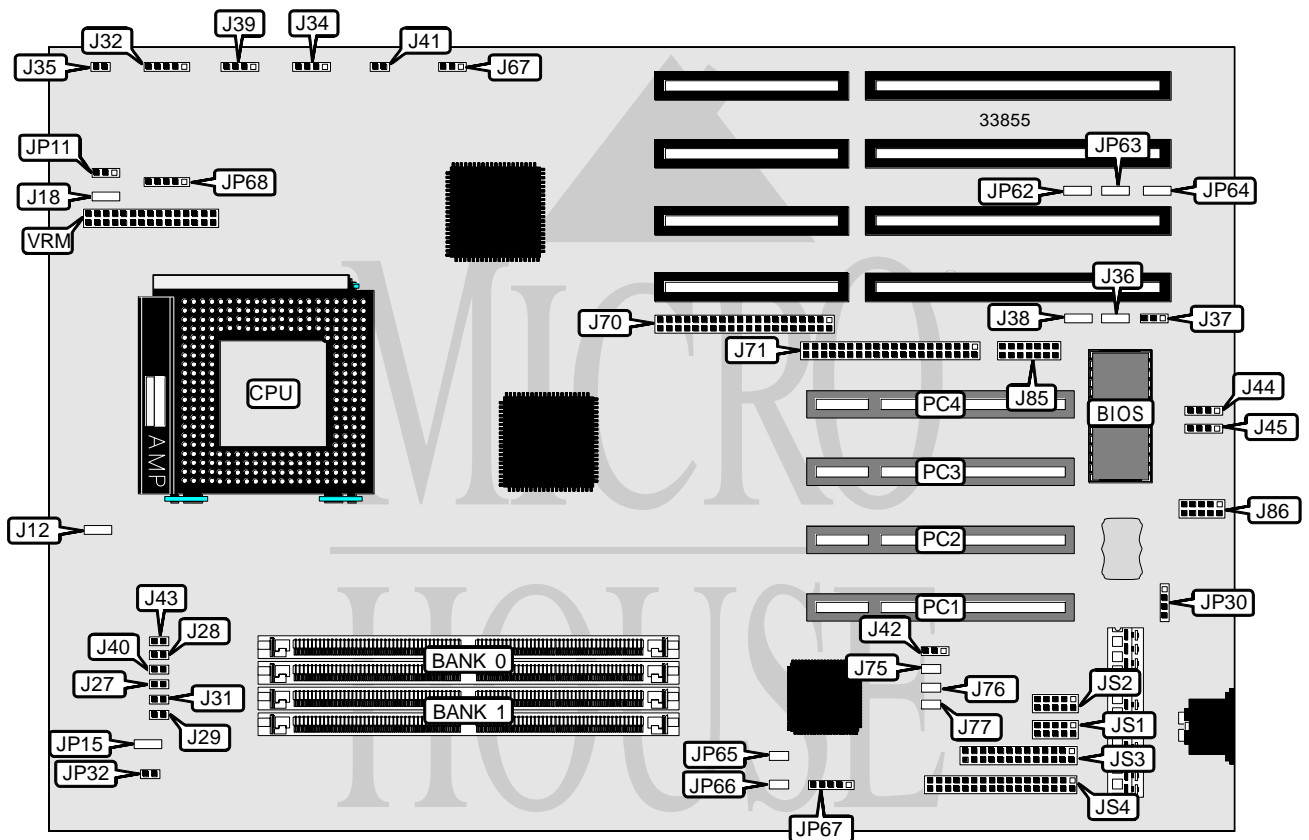


SUPER MICRO P5STD

Processor	Pentium
Processor Speed	75/90/100/120/133/150/166/180/200MHz
Chip Set	Intel
Video Chip Set	None
Maximum Onboard Memory	512MB (EDO supported)
Maximum Video Memory	None
Cache	256/512KB
BIOS	AMI
Dimensions	330mm x 218mm
I/O Options	32-bit PCI slots (4), floppy drive interface, IDE interfaces (2), parallel port, PS/2 mouse interface, serial ports (2), IR connectors (2), VRM connector, USB connectors (2), legacy connector
NPU Options	None



Continued on next page. . .

SUPER MICRO

P5STD

... continued from previous page

CONNECTIONS			
Purpose	Location	Purpose	Location
Power LED & keylock	J32	External battery	JP30
IDE interface LED	J34	Turbo LED	JP32
Reset switch	J35	IR connector	JP67
Speaker	J39	IR connector	JP68
USB connector	J44	Serial port 1	JS1
USB connector	J45	Serial port 2	JS2
IDE interface 1	J70	Parallel port	JS3
IDE interface 2	J71	Floppy drive interface	JS4
Legacy connector	J85	32-bit PCI slots	PC1 - PC4
PS/2 mouse interface	J86	VRM connector	VRM
Power LED	JP15		

USER CONFIGURABLE SETTINGS		
Function	Label	Position
í Factory configured - do not alter	J12	Unidentified
í Factory configured - do not alter	J18	Unidentified
í Factory configured - do not alter	J28	Open
í Factory configured - do not alter	J36	Unidentified
í Factory configured - do not alter	J37	Pins 1 & 2 closed
í Factory configured - do not alter	J38	Unidentified
í Factory configured - do not alter	J41	Open
í CMOS memory normal operation	J42	Pins 1 & 2 closed
CMOS memory clear	J42	Pins 2 & 3 closed
í Factory configured - do not alter	J43	Open
í ISA CLK = PCI CLK/4	J67	Pins 2 & 3 closed
ISA CLK = PCI CLK/3	J67	Pins 1 & 2 closed
í Factory configured - do not alter	J75	Unidentified
í Factory configured - do not alter	J76	Unidentified
í Factory configured - do not alter	J77	Unidentified
í Factory configured - do not alter	JP62	Unidentified
í Factory configured - do not alter	JP63	Unidentified
í Factory configured - do not alter	JP64	Unidentified
í Factory configured - do not alter	JP65	Unidentified
í Factory configured - do not alter	JP66	Unidentified

DRAM CONFIGURATION		
Size	Bank 0	Bank 1
8MB	(2) 1M x 36	None
16MB	(2) 2M x 36	None
16MB	(2) 1M x 36	(2) 1M x 36
24MB	(2) 2M x 36	(2) 1M x 36
32MB	(2) 4M x 36	None

Continued on next page. ...

SUPER MICRO P5STD

... continued from previous page

DRAM CONFIGURATION (CON'T)		
Size	Bank 0	Bank 1
32MB	(2) 2M x 36	(2) 2M x 36
40MB	(2) 4M x 36	(2) 1M x 36
48MB	(2) 2M x 36	(2) 4M x 36
64MB	(2) 8M x 36	None
64MB	(2) 4M x 36	(2) 4M x 36
72MB	(2) 8M x 36	(2) 1M x 36
80MB	(2) 2M x 36	(2) 8M x 36
96MB	(2) 8M x 36	(2) 4M x 36
128MB	(2) 16M x 36	None
128MB	(2) 8M x 36	(2) 8M x 36
136MB	(2) 16M x 36	(2) 1M x 36
144MB	(2) 16M x 36	(2) 2M x 36
160MB	(2) 16M x 36	(2) 4M x 36
192MB	(2) 16M x 36	(2) 8M x 36
256MB	(2) 32M x 36	None
256MB	(2) 16M x 36	(2) 16M x 36
264MB	(2) 32M x 36	(2) 1M x 36
272MB	(2) 32M x 36	(2) 2M x 36
288MB	(2) 32M x 36	(2) 4M x 36
320MB	(2) 32M x 36	(2) 8M x 36
384MB	(2) 32M x 36	(2) 16M x 36
512MB	(2) 32M x 36	(2) 32M x 36

Note: Board accepts EDO memory. Board also accepts x 32 SIMMs.

DRAM CONFIGURATION (CON'T)	
Size	Bank 0
256KB	(2) 32K x 32
512KB	(2) 64K x 32

Note: The location of bank 1 is unidentified.

CPU SPEED SELECTION						
CPU speed	Clock speed	Multiplier	J27	J29	J31	J40
75MHz	50MHz	1.5x	Open	Closed	Closed	Open
90MHz	60MHz	1.5x	Open	Closed	Open	Open
100MHz	66MHz	1.5x	Open	Open	Closed	Open
120MHz	60MHz	2x	Closed	Closed	Open	Open
133MHz	66MHz	2x	Closed	Open	Closed	Open
150MHz	60MHz	2.5x	Closed	Closed	Open	Closed
166MHz	66MHz	2.5x	Closed	Open	Closed	Closed
180MHz	60MHz	3x	Open	Closed	Open	Closed
200MHz	66MHz	3x	Open	Open	Closed	Closed

Continued on next page. . .

SUPER MICRO P5STD

... continued from previous page

CPU VOLTAGE SELECTION	
Voltage	JP11
2.9v	Pins 2 & 3 closed
3.3v	Open
3.4v	Pins 1 & 2 closed