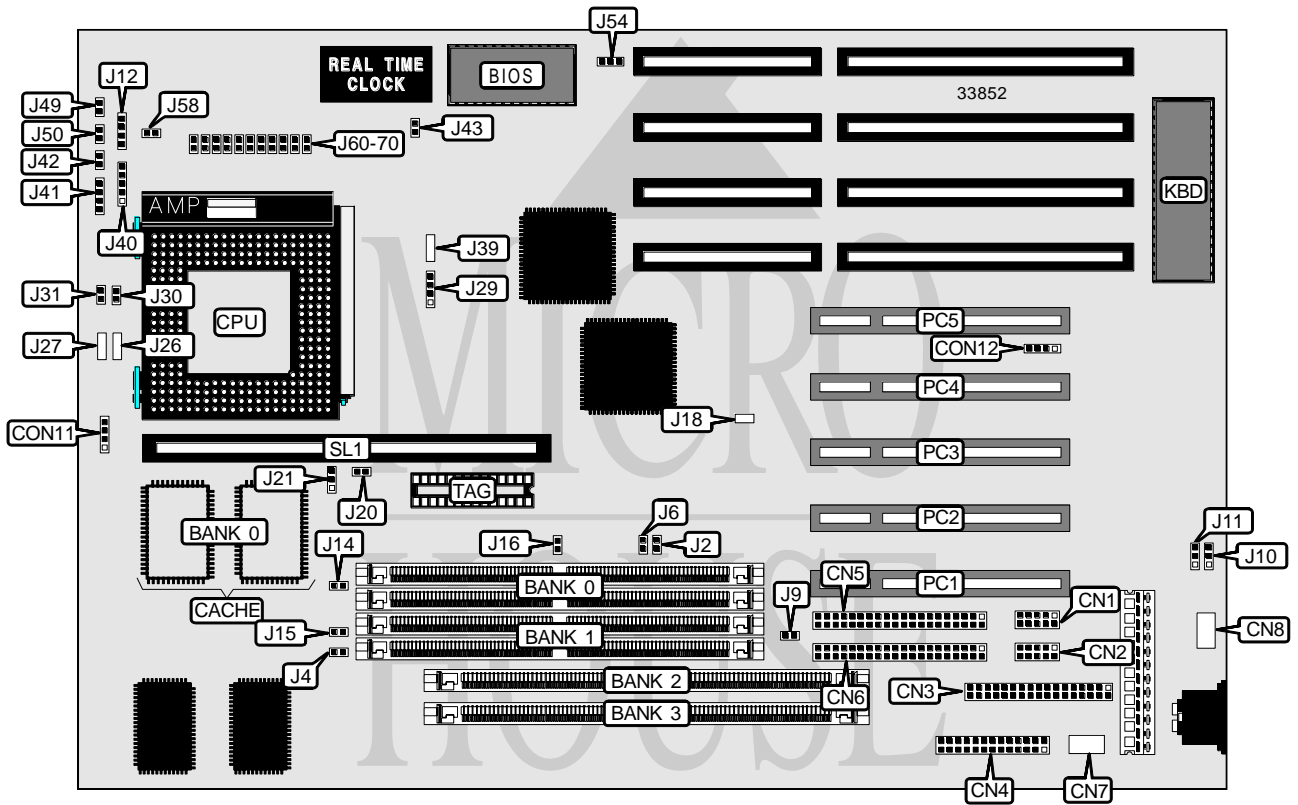


TYAN COMPUTER CORPORATION

S 1 4 7 0

Processor	CX M1/SGS/IBM/Pentium
Processor Speed	75/90/100/120/133/150/166/200MHz
Chip Set	Intel
Video Chip Set	None
Maximum Onboard Memory	128MB (EDO supported)
Maximum Video Memory	None
Cache	256/512KB
BIOS	AMI/Award
Dimensions	330mm x 218mm
I/O Options	32-bit PCI slots (5), floppy drive interface, IDE interfaces (2), parallel port, PS/2 mouse interface, serial ports (2), cache slot, IR connectors (2), USB connector
NPU Options	None



Continued on next page. . .

TYAN COMPUTER CORPORATION

S 1 4 7 0

... continued from previous page

CONNECTIONS			
Purpose	Location	Purpose	Location
Serial port 2	CN1	IR connector	CON12
Serial port 1	CN2	IDE interface LED	J12
Floppy drive interface	CN3	Power LED & keylock	J40
Parallel port	CN4	Speaker	J41
IDE interface 2	CN5	Turbo switch	J42
IDE interface 1	CN6	Reset switch	J49
USB connector	CN7	Turbo LED	J50
PS/2 mouse interface	CN8	32-bit PCI slots	PC1 - PC5
IR connector	CON11	Cache slot	SL1

USER CONFIGURABLE SETTINGS		
Function	Label	Position
í Factory configured - do not alter	J18	Unidentified
í Factory configured - do not alter	J26	Unidentified
í Factory configured - do not alter	J27	Unidentified
í Factory configured - do not alter	J39	Pins 1 & 2 closed
í CMOS memory normal operation	J43	Open
CMOS memory clear	J43	Closed
í Factory configured - do not alter	J54	Pins 1 & 2 closed

DRAM CONFIGURATION				
Size	Bank 0	Bank 1	Bank 2	Bank 3
8MB	(2) 1M x 32	None	None	None
8MB	None	None	(1) 1M x 64	None
16MB	None	None	(1) 2M x 64	None
16MB	(2) 2M x 32	None	None	None
16MB	(2) 1M x 32	(2) 1M x 32	None	None
32MB	(2) 2M x 32	(2) 2M x 32	None	None
32MB	(2) 4M x 32	None	None	None
32MB	None	None	(1) 4M x 64	None
64MB	(2) 8M x 32	None	None	None
64MB	(2) 4M x 32	(2) 4M x 32	None	None
64MB	(2) 4M x 32	None	None	(1) 4M x 64
64MB	None	None	(1) 4M x 64	(1) 4M x 64
96MB	(2) 8M x 32	(2) 4M x 32	None	None
96MB	(2) 8M x 32	None	None	(1) 4M x 64
128MB	(2) 8M x 32	(2) 8M x 32	None	None

Note: Board accepts EDO memory.

DRAM VOLTAGE CONFIGURATION							
Voltage	J2	J4	J6	J9	J14	J15	J16
3.3v	Open	Closed	Open	Open	Closed	Closed	Open
í 5v	Closed	Open	Closed	Closed	Open	Open	Closed

Continued on next page...

TYAN COMPUTER CORPORATION

S 1 4 7 0

... continued from previous page

CACHE CONFIGURATION			
Size	Bank 0	SL1	TAG
256KB	(2) 32K x 32	Not installed	Unidentified
512KB	(2) 32K x 32	256KB module installed	Unidentified

CACHE JUMPER CONFIGURATION	
Size	J21
256KB	Pins 2 & 3 closed
512KB	Pins 1 & 2 closed

CACHE TAG CONFIGURATION	
Setting	J20
TAG enabled	Closed
TAG disabled	Open

Note: Jumper only used if COAST module is installed.

CPU SPEED SELECTION (CYRIX/SGS/IBM)					
CPU speed	Clock speed	Multiplier	J29	J30	J31
120MHz	50MHz	2x	1 & 2, 3 & 4	Closed	Open
150MHz	60MHz	2x	3 & 4	Closed	Open
166MHz	66MHz	2x	1 & 2	Closed	Open

Note: Pins designated should be in the closed position.

CPU SPEED SELECTION (INTEL)					
CPU speed	Clock speed	Multiplier	J29	J30	J31
75MHz	50MHz	1.5x	1 & 2, 3 & 4	Open	Open
90MHz	60MHz	1.5x	3 & 4	Open	Open
100MHz	66MHz	1.5x	1 & 2	Open	Open
120MHz	60MHz	2x	3 & 4	Closed	Open
133MHz	66MHz	2x	1 & 2	Closed	Open
150MHz	60MHz	2.5x	3 & 4	Closed	Closed
166MHz	66MHz	2.5x	1 & 2	Closed	Closed
200MHz	66MHz	3x	1 & 2	Open	Closed

Note: Pins designated should be in the closed position.

CPU VOLTAGE SELECTION (CYRIX & P54C)						
Voltage	J58	J60	J61	J62	J63	J64
3.3v	Open	Open	Closed	Open	Open	Open
3.5v	Open	Open	Open	Closed	Open	Open
3.6v	Open	Closed	Open	Open	Open	Open

Continued on next page. . .

TYAN COMPUTER CORPORATION
S 1 4 7 0

... continued from previous page

CPU VOLTAGE SELECTION (CYRIX & P54C, CON'T)						
Voltage	J65	J66	J67	J68	J69	J70
3.3v	Open	Open	Closed	Closed	Closed	Closed
3.5v	Open	Open	Closed	Closed	Closed	Closed
3.6v	Open	Open	Closed	Closed	Closed	Closed

CPU VOLTAGE SELECTION (P55C)									
Voltage	J58	J63	J64	J65	J66	J67	J68	J69	J70
2.65v	Closed	Closed	Open	Open	Closed	Open	Open	Open	Open
2.85v	Closed	Open	Closed	Open	Closed	Open	Open	Open	Open
3v	Closed	Open	Open	Closed	Closed	Open	Open	Open	Open

SERIAL PORT SELECTION		
Setting	J10	J11
í Used as serial port	Pins 1 & 2 closed	Pins 1 & 2 closed
Used as IR connector	Pins 2 & 3 closed	Pins 2 & 3 closed