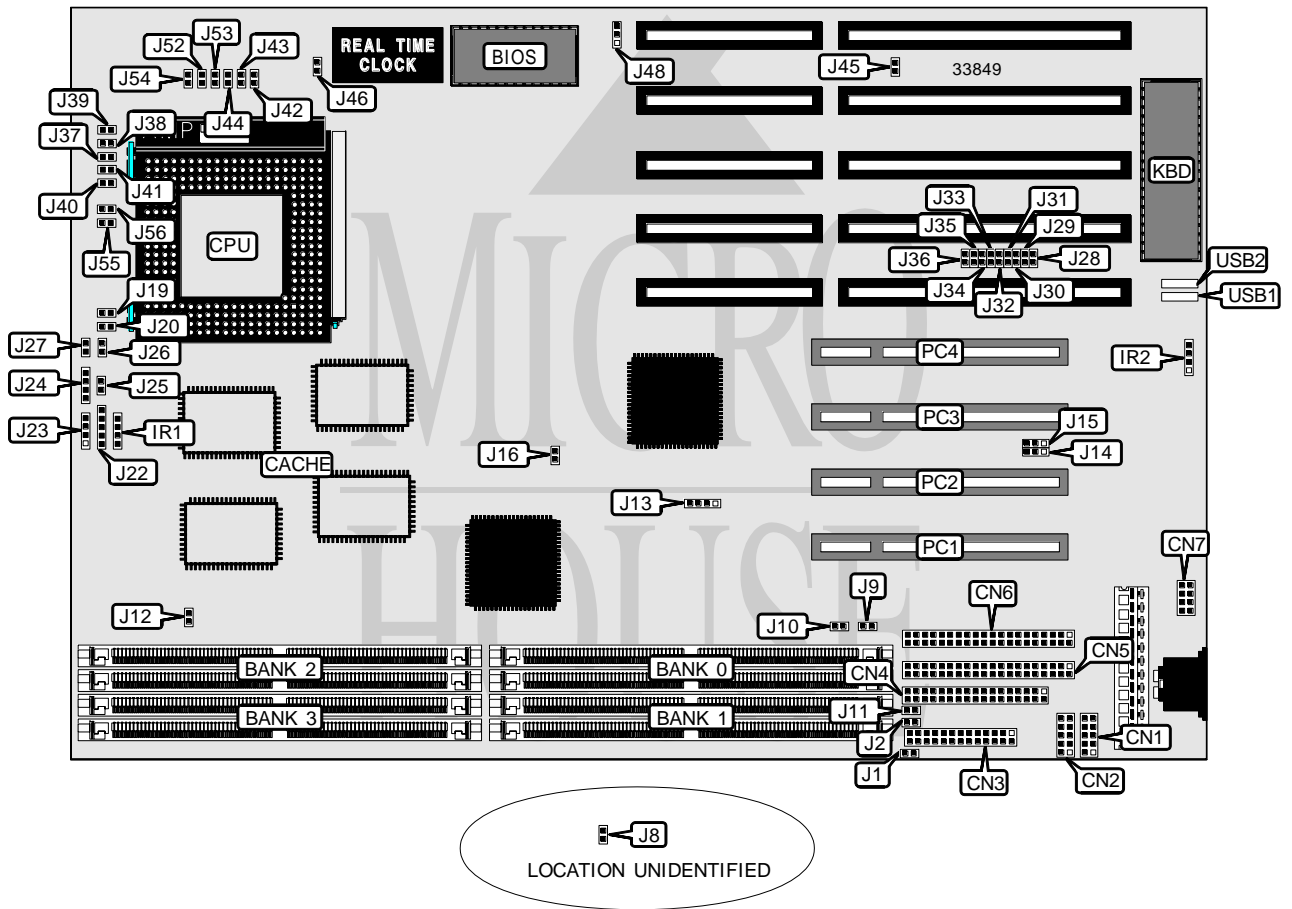


TYAN COMPUTER CORPORATION

S1563S (REV. 1.0)

Processor	CX M1/Pentium
Processor Speed	75/90/100/120/133/150/166/200MHz
Chip Set	Intel
Video Chip Set	None
Maximum Onboard Memory	512MB (EDO supported)
Maximum Video Memory	None
Cache	512KB
BIOS	AMI/Award
Dimensions	330mm x 218mm
I/O Options	32-bit PCI slots (4), floppy drive interface, IDE interfaces (2), parallel port, PS/2 mouse interface, serial ports (2), IR connectors (2), USB connectors (2)
NPU Options	None



Continued on next page. . .

TYAN COMPUTER CORPORATION

S1563S (REV. 1.0)

... continued from previous page

CONNECTIONS			
Purpose	Location	Purpose	Location
Serial port 2	CN1	Power LED & keylock	J22
Serial port 1	CN2	Speaker	J23
Parallel port	CN3	IDE interface LED	J24
Floppy drive interface	CN4	Turbo LED	J25
IDE interface 1	CN5	Turbo switch	J26
IDE interface 2	CN6	Reset switch	J27
PS/2 mouse interface	CN7	32-bit PCI slots	PC1 - PC4
IR connector 1	IR1	USB connector 1	USB1
IR connector 2	IR2	USB connector 2	USB2

USER CONFIGURABLE SETTINGS		
Function	Label	Position
í Factory configured - do not alter	J16	Open
í Factory configured - do not alter	J28	Open
í Factory configured - do not alter	J29	Open
í Factory configured - do not alter	J30	Open
í Factory configured - do not alter	J31	Open
í Factory configured - do not alter	J32	Open
í Factory configured - do not alter	J33	Open
í Factory configured - do not alter	J34	Open
í Factory configured - do not alter	J35	Open
í Factory configured - do not alter	J36	Open
í Factory configured - do not alter	J45	Open
í CMOS memory normal operation	J46	Open
CMOS memory clear	J46	Closed
í Factory configured - do not alter	J48	Pins 1 & 2 closed
í Factory configured - do not alter	J55	Open
í Factory configured - do not alter	J56	Open

DRAM CONFIGURATION				
Size	Bank 0	Bank 1	Bank 2	Bank 3
8MB	(2) 1M x 32	None	None	None
8MB	(2) 512K x 32	(2) 256K x 32	(2) 256K x 32	None
8MB	(2) 512K x 32	(2) 512K x 32	None	None
8MB	(2) 256K x 32	(2) 256K x 32	(2) 256K x 32	(2) 256K x 32
10MB	(2) 1M x 32	(2) 256K x 32	None	None
10MB	(2) 512K x 32	(2) 256K x 32	(2) 256K x 32	(2) 256K x 32
10MB	(2) 256K x 32	(2) 512K x 32	(2) 512K x 32	None
10MB	(2) 256K x 32	(2) 1M x 32	None	None

Continued on next page...

TYAN COMPUTER CORPORATION

S1563S (REV. 1.0)

... continued from previous page

DRAM CONFIGURATION (CON'T)				
Size	Bank 0	Bank 1	Bank 2	Bank 3
12MB	(2) 1M x 32	(2) 256K x 32	(2) 256K x 32	None
12MB	(2) 1M x 32	(2) 512K x 32	None	None
12MB	(2) 512K x 32	(2) 512K x 32	(2) 512K x 32	None
12MB	(2) 512K x 32	(2) 1M x 32	None	None
14MB	(2) 1M x 32	(2) 256K x 32	(2) 256K x 32	(2) 256K x 32
14MB	(2) 256K x 32	(2) 512K x 32	(2) 512K x 32	(2) 512K x 32
16MB	(2) 2M x 32	None	None	None
16MB	(2) 1M x 32	(2) 512K x 32	(2) 512K x 32	None
16MB	(2) 1M x 32	(2) 1M x 32	None	None
16MB	(2) 512K x 32	(2) 512K x 32	(2) 512K x 32	(2) 512K x 32
18MB	(2) 2M x 32	(2) 256K x 32	None	None
18MB	(2) 256K x 32	(2) 1M x 32	(2) 1M x 32	None
18MB	(2) 256K x 32	(2) 2M x 32	None	None
20MB	(2) 2M x 32	(2) 256K x 32	(2) 256K x 32	None
20MB	(2) 2M x 32	(2) 512K x 32	None	None
20MB	(2) 1M x 32	(2) 512K x 32	(2) 512K x 32	(2) 512K x 32
20MB	(2) 512K x 32	(2) 1M x 32	(2) 1M x 32	None
20MB	(2) 512K x 32	(2) 2M x 32	None	None
22MB	(2) 2M x 32	(2) 256K x 32	(2) 256K x 32	(2) 256K x 32
24MB	(2) 2M x 32	(2) 512K x 32	(2) 512K x 32	None
24MB	(2) 2M x 32	(2) 1M x 32	None	None
24MB	(2) 1M x 32	(2) 1M x 32	(2) 1M x 32	None
24MB	(2) 1M x 32	(2) 2M x 32	None	None
26MB	(2) 256K x 32	(2) 1M x 32	(2) 1M x 32	(2) 1M x 32
28MB	(2) 2M x 32	(2) 512K x 32	(2) 512K x 32	(2) 512K x 32
28MB	(2) 512K x 32	(2) 1M x 32	(2) 1M x 32	(2) 1M x 32
32MB	(2) 4M x 32	None	None	None
32MB	(2) 2M x 32	(2) 1M x 32	(2) 1M x 32	None
32MB	(2) 2M x 32	(2) 2M x 32	None	None
32MB	(2) 1M x 32	(2) 1M x 32	(2) 1M x 32	(2) 1M x 32
34MB	(2) 4M x 32	(2) 256K x 32	None	None
34MB	(2) 256K x 32	(2) 2M x 32	(2) 2M x 32	None
34MB	(2) 256K x 32	(2) 4M x 32	None	None
36MB	(2) 4M x 32	(2) 256K x 32	(2) 256K x 32	None
36MB	(2) 4M x 32	(2) 512K x 32	None	None
36MB	(2) 512K x 32	(2) 2M x 32	(2) 2M x 32	None
36MB	(2) 512K x 32	(2) 4M x 32	None	None
38MB	(2) 4M x 32	(2) 256K x 32	(2) 256K x 32	(2) 256K x 32
40MB	(2) 4M x 32	(2) 512K x 32	(2) 512K x 32	None

Continued on next page...

TYAN COMPUTER CORPORATION

S1563S (REV. 1.0)

... continued from previous page

DRAM CONFIGURATION (CON'T)				
Size	Bank 0	Bank 1	Bank 2	Bank 3
40MB	(2) 4M x 32	(2) 1M x 32	None	None
40MB	(2) 2M x 32	(2) 1M x 32	(2) 1M x 32	(2) 1M x 32
40MB	(2) 1M x 32	(2) 2M x 32	(2) 2M x 32	None
40MB	(2) 1M x 32	(2) 4M x 32	None	None
44MB	(2) 4M x 32	(2) 512K x 32	(2) 512K x 32	(2) 512K x 32
48MB	(2) 4M x 32	(2) 1M x 32	(2) 1M x 32	None
48MB	(2) 4M x 32	(2) 2M x 32	None	None
48MB	(2) 2M x 32	(2) 2M x 32	(2) 2M x 32	None
48MB	(2) 2M x 32	(2) 4M x 32	None	None
50MB	(2) 256K x 32	(2) 2M x 32	(2) 2M x 32	(2) 2M x 32
52MB	(2) 512K x 32	(2) 2M x 32	(2) 2M x 32	(2) 2M x 32
56MB	(2) 4M x 32	(2) 1M x 32	(2) 1M x 32	(2) 1M x 32
56MB	(2) 1M x 32	(2) 2M x 32	(2) 2M x 32	(2) 2M x 32
64MB	(2) 8M x 32	None	None	None
64MB	(2) 4M x 32	(2) 2M x 32	(2) 2M x 32	None
64MB	(2) 4M x 32	(2) 4M x 32	None	None
64MB	(2) 2M x 32	(2) 2M x 32	(2) 2M x 32	(2) 2M x 32
66MB	(2) 8M x 32	(2) 256K x 32	None	None
66MB	(2) 256K x 32	(2) 4M x 32	(2) 4M x 32	None
66MB	(2) 256K x 32	(2) 8M x 32	None	None
68MB	(2) 8M x 32	(2) 256K x 32	(2) 256K x 32	None
68MB	(2) 8M x 32	(2) 512K x 32	None	None
68MB	(2) 512K x 32	(2) 4M x 32	(2) 4M x 32	None
68MB	(2) 512K x 32	(2) 8M x 32	None	None
70MB	(2) 8M x 32	(2) 256K x 32	(2) 256K x 32	(2) 256K x 32
72MB	(2) 8M x 32	(2) 512K x 32	(2) 512K x 32	None
72MB	(2) 8M x 32	(2) 1M x 32	None	None
72MB	(2) 1M x 32	(2) 4M x 32	(2) 4M x 32	None
72MB	(2) 1M x 32	(2) 8M x 32	None	None
76MB	(2) 8M x 32	(2) 512K x 32	(2) 512K x 32	(2) 512K x 32
80MB	(2) 8M x 32	(2) 1M x 32	(2) 1M x 32	None
80MB	(2) 8M x 32	(2) 2M x 32	None	None
80MB	(2) 4M x 32	(2) 2M x 32	(2) 2M x 32	(2) 2M x 32
80MB	(2) 2M x 32	(2) 4M x 32	(2) 4M x 32	None
80MB	(2) 2M x 32	(2) 8M x 32	None	None
88MB	(2) 8M x 32	(2) 1M x 32	(2) 1M x 32	(2) 1M x 32
96MB	(2) 8M x 32	(2) 2M x 32	(2) 2M x 32	None
96MB	(2) 8M x 32	(2) 4M x 32	None	None
96MB	(2) 4M x 32	(2) 4M x 32	(2) 4M x 32	None
96MB	(2) 4M x 32	(2) 8M x 32	None	None
98MB	(2) 256K x 32	(2) 4M x 32	(2) 4M x 32	(2) 4M x 32
100MB	(2) 512K x 32	(2) 4M x 32	(2) 4M x 32	(2) 4M x 32

Continued on next page. . .

TYAN COMPUTER CORPORATION

S1563S (REV. 1.0)

... continued from previous page

DRAM CONFIGURATION (CON'T)				
Size	Bank 0	Bank 1	Bank 2	Bank 3
104MB	(2) 1M x 32	(2) 4M x 32	(2) 4M x 32	(2) 4M x 32
112MB	(2) 8M x 32	(2) 2M x 32	(2) 2M x 32	(2) 2M x 32
112MB	(2) 2M x 32	(2) 4M x 32	(2) 4M x 32	(2) 4M x 32
128MB	(2) 16M x 32	None	None	None
128MB	(2) 8M x 32	(2) 4M x 32	(2) 4M x 32	None
128MB	(2) 8M x 32	(2) 8M x 32	None	None
128MB	(2) 4M x 32	(2) 4M x 32	(2) 4M x 32	(2) 4M x 32
130MB	(2) 16M x 32	(2) 256K x 32	None	None
130MB	(2) 256K x 32	(2) 8M x 32	(2) 8M x 32	None
130MB	(2) 256K x 32	(2) 16M x 32	None	None
132MB	(2) 16M x 32	(2) 256K x 32	(2) 256K x 32	None
132MB	(2) 16M x 32	(2) 512K x 32	None	None
132MB	(2) 512K x 32	(2) 8M x 32	(2) 8M x 32	None
132MB	(2) 512K x 32	(2) 16M x 32	None	None
134MB	(2) 16M x 32	(2) 256K x 32	(2) 256K x 32	(2) 256K x 32
136MB	(2) 16M x 32	(2) 512K x 32	(2) 512K x 32	None
136MB	(2) 16M x 32	(2) 1M x 32	None	None
136MB	(2) 1M x 32	(2) 8M x 32	(2) 8M x 32	None
136MB	(2) 1M x 32	(2) 16M x 32	None	None
140MB	(2) 16M x 32	(2) 512K x 32	(2) 512K x 32	(2) 512K x 32
144MB	(2) 16M x 32	(2) 1M x 32	(2) 1M x 32	None
144MB	(2) 16M x 32	(2) 2M x 32	None	None
144MB	(2) 2M x 32	(2) 8M x 32	(2) 8M x 32	None
144MB	(2) 2M x 32	(2) 16M x 32	None	None
152MB	(2) 16M x 32	(2) 1M x 32	(2) 1M x 32	(2) 1M x 32
160MB	(2) 16M x 32	(2) 2M x 32	(2) 2M x 32	None
160MB	(2) 16M x 32	(2) 4M x 32	None	None
160MB	(2) 8M x 32	(2) 4M x 32	(2) 4M x 32	(2) 4M x 32
160MB	(2) 4M x 32	(2) 8M x 32	(2) 8M x 32	None
160MB	(2) 4M x 32	(2) 16M x 32	None	None
176MB	(2) 16M x 32	(2) 2M x 32	(2) 2M x 32	(2) 2M x 32
192MB	(2) 16M x 32	(2) 4M x 32	(2) 4M x 32	None
192MB	(2) 16M x 32	(2) 8M x 32	None	None
192MB	(2) 8M x 32	(2) 8M x 32	(2) 8M x 32	None
192MB	(2) 8M x 32	(2) 16M x 32	None	None
194MB	(2) 256K x 32	(2) 8M x 32	(2) 8M x 32	(2) 8M x 32
196MB	(2) 512K x 32	(2) 8M x 32	(2) 8M x 32	(2) 8M x 32
200MB	(2) 1M x 32	(2) 8M x 32	(2) 8M x 32	(2) 8M x 32
208MB	(2) 2M x 32	(2) 8M x 32	(2) 8M x 32	(2) 8M x 32
224MB	(2) 16M x 32	(2) 4M x 32	(2) 4M x 32	(2) 4M x 32
224MB	(2) 4M x 32	(2) 8M x 32	(2) 8M x 32	(2) 8M x 32
256MB	(2) 16M x 32	(2) 8M x 32	(2) 8M x 32	None

Continued on next page. . .

TYAN COMPUTER CORPORATION

S1563S (REV. 1.0)

... continued from previous page

DRAM CONFIGURATION (CON'T)				
Size	Bank 0	Bank 1	Bank 2	Bank 3
256MB	(2) 16M x 32	(2) 16M x 32	None	None
256MB	(2) 8M x 32	(2) 8M x 32	(2) 8M x 32	(2) 8M x 32
258MB	(2) 256K x 32	(2) 16M x 32	(2) 16M x 32	None
260MB	(2) 512K x 32	(2) 16M x 32	(2) 16M x 32	None
264MB	(2) 1M x 32	(2) 16M x 32	(2) 16M x 32	None
272MB	(2) 2M x 32	(2) 16M x 32	(2) 16M x 32	None
288MB	(2) 4M x 32	(2) 16M x 32	(2) 16M x 32	None
320MB	(2) 16M x 32	(2) 8M x 32	(2) 8M x 32	(2) 8M x 32
320MB	(2) 8M x 32	(2) 16M x 32	(2) 16M x 32	None
384MB	(2) 16M x 32	(2) 16M x 32	(2) 16M x 32	None
386MB	(2) 256K x 32	(2) 16M x 32	(2) 16M x 32	(2) 16M x 32
388MB	(2) 512K x 32	(2) 16M x 32	(2) 16M x 32	(2) 16M x 32
392MB	(2) 1M x 32	(2) 16M x 32	(2) 16M x 32	(2) 16M x 32
400MB	(2) 2M x 32	(2) 16M x 32	(2) 16M x 32	(2) 16M x 32
416MB	(2) 4M x 32	(2) 16M x 32	(2) 16M x 32	(2) 16M x 32
448MB	(2) 8M x 32	(2) 16M x 32	(2) 16M x 32	(2) 16M x 32
512MB	(2) 16M x 32	(2) 16M x 32	(2) 16M x 32	(2) 16M x 32

Note: Board accepts EDO memory. Board also accepts x 36 SIMMs.

DRAM VOLTAGE CONFIGURATION							
Voltage	J1	J2	J8	J9	J10	J11	J12
3.3v	Open	Open	Closed	Closed	Closed	Open	Open
5v	Closed	Closed	Open	Open	Open	Closed	Closed

CACHE CONFIGURATION	
Size	Bank 0
512KB	(4) 32K x 32

Note: Bank 0 is factory installed and is not configurable.

CPU SPEED SELECTION (CYRIX)					
CPU speed	Clock speed	Multiplier	J13	J19	J20
120MHz	50MHz	2x	1 & 2, 3 & 4	Closed	Open
150MHz	60MHz	2x	3 & 4	Closed	Open
166MHz	66MHz	2x	1 & 2	Closed	Open

Continued on next page. . .

TYAN COMPUTER CORPORATION

S1563S (REV. 1.0)

... continued from previous page

CPU SPEED SELECTION (INTEL)					
CPU speed	Clock speed	Multiplier	J13	J19	J20
75MHz	50MHz	1.5x	1 & 2, 3 & 4	Open	Open
90MHz	60MHz	1.5x	3 & 4	Open	Open
100MHz	66MHz	1.5x	1 & 2	Open	Open
120MHz	60MHz	2x	3 & 4	Closed	Open
133MHz	66MHz	2x	1 & 2	Closed	Open
150MHz	60MHz	2.5x	3 & 4	Closed	Closed
166MHz	66MHz	2.5x	1 & 2	Closed	Closed
200MHz	66MHz	3x	1 & 2	Open	Closed

CPU VOLTAGE SELECTION (CYRIX & P54C)					
Voltage	J37	J38	J39	J40	J41
3.3v	Closed	Open	Open	Closed	Closed
3.5v	Open	Open	Closed	Closed	Closed
3.6v	Open	Closed	Open	Closed	Closed

CPU VOLTAGE SELECTION (CYRIX & P54C, CON'T)						
Voltage	J42	J43	J44	J52	J53	J54
3.3v	Open	Open	Open	Closed	Open	Open
3.5v	Open	Open	Open	Closed	Open	Open
3.6v	Open	Open	Open	Closed	Open	Open

CPU VOLTAGE SELECTION (P55C)								
Voltage	J40	J41	J42	J43	J44	J52	J53	J54
2.65v	Open	Open	Open	Closed	Open	Open	Closed	Closed
2.85v	Open	Open	Open	Open	Closed	Open	Closed	Closed
3v	Open	Open	Closed	Open	Open	Open	Closed	Closed

SERIAL PORT SELECTION		
Setting	J14	J15
í Serial port set as COM1 & COM2	Pins 1 & 2 closed	Pins 1 & 2 closed
IR connector	Pins 2 & 3 closed	Pins 2 & 3 closed