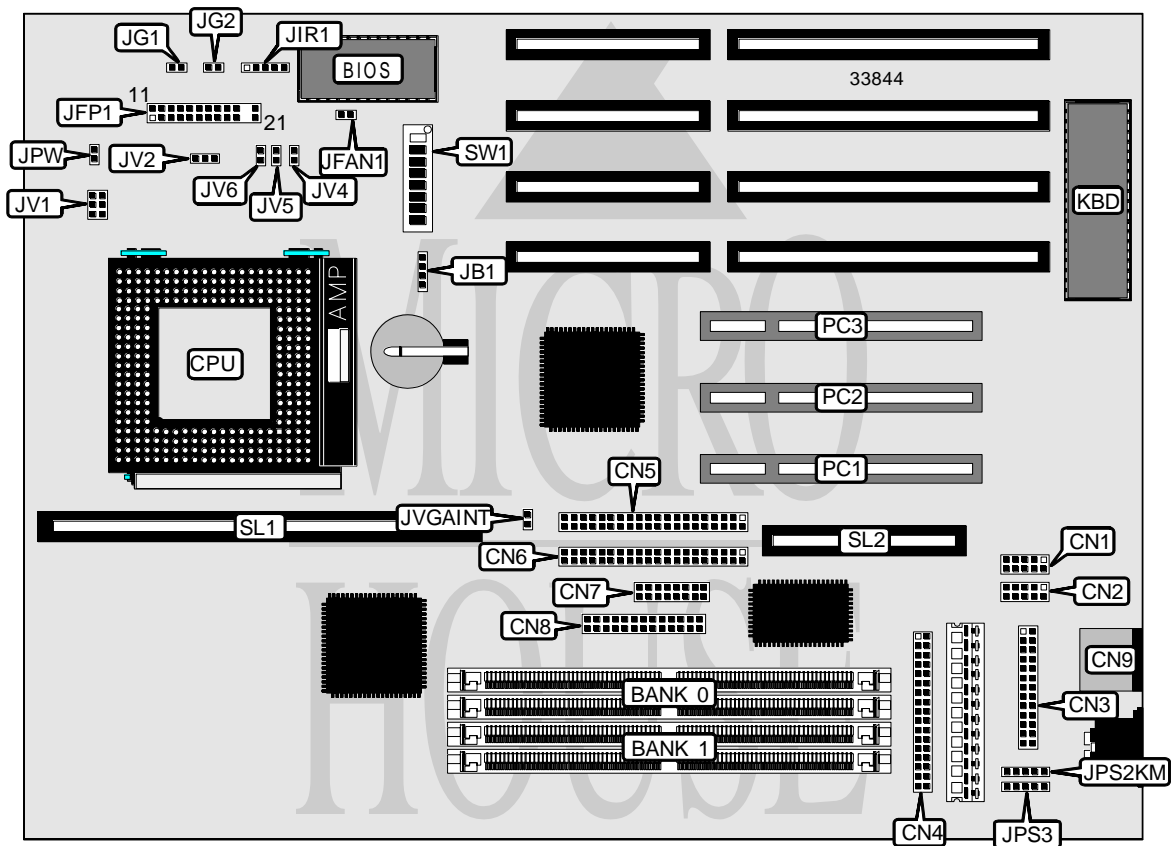


MICRO-STAR INTERNATIONAL CO., LTD.

MS-5130 (VER 1.1)

Processor	CX M1/AM K5/Pentium
Processor Speed	75/90/100/120/133/150/166/200MHz
Chip Set	SIS
Video Chip Set	Unidentified
Maximum Onboard Memory	512MB (EDO supported)
Maximum Video Memory	2MB
Cache	256/512KB
BIOS	Award
Dimensions	280mm x 220mm
I/O Options	32-bit PCI slots (3), floppy drive interface, green PC connector, IDE interfaces (2), parallel port, PS/2 mouse port, PS/2 mouse interface, serial ports (2), VGA feature connector, VGA connector, cache slot, IR connector, audio bus slot
NPU Options	None



Continued on next page. . .

MICRO-STAR INTERNATIONAL CO., LTD.

MS-5130 (VER 1.1)

... continued from previous page

CONNECTIONS			
Purpose	Location	Purpose	Location
Serial port 2	CN1	Turbo LED	JFP1 pins 12 & 13
Serial port 1	CN2	Turbo switch (not used)	JFP1 pins 15 & 17
Parallel port	CN3	Reset switch	JFP1 pins 19 & 20
Floppy drive interface	CN4	IDE interface LED	JFP1 pins 21 & 22
IDE interface 2	CN5	Green PC LED	JG1
IDE interface 1	CN6	Green PC connector	JG2
VGA connector	CN7	IR connector	JIR1
VGA feature connector	CN8	Auxiliary keyboard connector	JPS3
PS/2 mouse port	CN9	+5v ground (reserved)	JPW
External battery	JB1	PS/2 mouse interface	JPSW2KM
Chassis fan power	JFAN1	32-bit PCI slots	PC1 - PC3
Power LED & keylock	JFP1 pins 1 - 5	Cache slot	SL1
Speaker	JFP1 pins 7 & 10	Audio bus slot	SL2

USER CONFIGURABLE SETTINGS		
Function	Label	Position
On board video IRQ enabled	JGVAINT	Closed
On board video IRQ disabled	JGVAINT	Open

DRAM CONFIGURATION		
Size	Bank 0	Bank 1
8MB	(2) 1M x 36	None
16MB	(2) 2M x 36	None
16MB	(2) 1M x 36	(2) 1M x 36
24MB	(2) 2M x 36	(2) 1M x 36
32MB	(2) 4M x 36	None
32MB	(2) 2M x 36	(2) 2M x 36
40MB	(2) 4M x 36	(2) 1M x 36
48MB	(2) 2M x 36	(2) 4M x 36
64MB	(2) 8M x 36	None
64MB	(2) 4M x 36	(2) 4M x 36
72MB	(2) 8M x 36	(2) 1M x 36
80MB	(2) 2M x 36	(2) 8M x 36
96MB	(2) 8M x 36	(2) 4M x 36
128MB	(2) 16M x 36	None
128MB	(2) 8M x 36	(2) 8M x 36
136MB	(2) 16M x 36	(2) 1M x 36
144MB	(2) 16M x 36	(2) 2M x 36
160MB	(2) 16M x 36	(2) 4M x 36
192MB	(2) 16M x 36	(2) 8M x 36
256MB	(2) 32M x 36	None
256MB	(2) 16M x 36	(2) 16M x 36

Continued on next page. ...

MICRO-STAR INTERNATIONAL CO., LTD.
MS-5130 (VER 1.1)

... continued from previous page

DRAM CONFIGURATION (CON'T)		
Size	Bank 0	Bank 1
264MB	(2) 32M x 36	(2) 1M x 36
272MB	(2) 32M x 36	(2) 2M x 36
288MB	(2) 32M x 36	(2) 4M x 36
320MB	(2) 32M x 36	(2) 8M x 36
384MB	(2) 32M x 36	(2) 16M x 36
512MB	(2) 32M x 36	(2) 32M x 36

Note: Board accepts EDO memory. Banks are interchangeable.

CACHE CONFIGURATION	
Size	SL1
256KB	256KB module installed
512KB	512KB module installed

CPU SPEED SELECTION (CYRIX)						
CPU speed	Clock speed	Multiplier	SW1/1	SW1/2	SW1/3	SW1/4
120MHz	50MHz	2x	On	On	Off	Off
133MHz	55MHz	2x	On	On	Off	Off
150MHz	60MHz	2x	On	On	Off	Off
166MHz	66MHz	2x	On	On	Off	Off

CPU SPEED SELECTION (CYRIX, CON'T)						
CPU speed	Clock speed	Multiplier	SW1/5	SW1/6	SW1/7	SW1/8
120MHz	50MHz	2x	Off	On	Off	Off
133MHz	55MHz	2x	On	On	On	Off
150MHz	60MHz	2x	On	Off	Off	Off
166MHz	66MHz	2x	Off	Off	Off	Off

CPU SPEED SELECTION (AMD)						
CPU speed	Clock speed	Multiplier	SW1/1	SW1/2	SW1/3	SW1/4
75MHz	50MHz	1.5x	Off	Off	Off	Off
90MHz	60MHz	1.5x	Off	Off	Off	Off
100MHz	66MHz	1.5x	Off	Off	Off	Off

CPU SPEED SELECTION (AMD, CON'T)						
CPU speed	Clock speed	Multiplier	SW1/5	SW1/6	SW1/7	SW1/8
75MHz	50MHz	1.5x	Off	On	Off	Off
90MHz	60MHz	1.5x	On	Off	Off	Off
100MHz	66MHz	1.5x	Off	Off	Off	Off

Continued on next page. . .

MICRO-STAR INTERNATIONAL CO., LTD.
MS-5130 (VER 1.1)

... continued from previous page

CPU SPEED SELECTION (INTEL)						
CPU speed	Clock speed	Multiplier	SW1/1	SW1/2	SW1/3	SW1/4
75MHz	50MHz	1.5x	Off	Off	Off	Off
75MHz	66MHz	1.5x	Off	Off	Off	Off
90MHz	60MHz	1.5x	Off	Off	Off	Off
100MHz	66MHz	1.5x	Off	Off	Off	Off
120MHz	60MHz	2x	Off	On	Off	Off
133MHz	66MHz	2x	Off	On	Off	Off
150MHz	60MHz	2.5x	Off	On	On	Off
166MHz	66MHz	2.5x	Off	On	On	Off
200MHz	66MHz	3x	Off	Off	On	Off

CPU SPEED SELECTION (INTEL, CON'T)						
CPU speed	Clock speed	Multiplier	SW1/5	SW1/6	SW1/7	SW1/8
75MHz	50MHz	1.5x	Off	On	Off	Off
75MHz	66MHz	1.5x	On	On	Off	On
90MHz	60MHz	1.5x	On	Off	Off	Off
100MHz	66MHz	1.5x	Off	Off	Off	Off
120MHz	60MHz	2x	On	Off	Off	Off
133MHz	66MHz	2x	Off	Off	Off	Off
150MHz	60MHz	2.5x	On	Off	Off	Off
166MHz	66MHz	2.5x	Off	Off	Off	Off
200MHz	66MHz	3x	Off	Off	Off	Off

CPU VOLTAGE SELECTION					
Voltage	JV1	JV2	JV4	JV5	JV6
2.4v - 2.6v	Open	1 & 2	Closed	Open	Open
2.6v - 2.8v (P55C)	Open	1 & 2	Open	Open	Closed
3.3v - 3.45v (STD/VR)	1 & 2, 3 & 4, 5 & 6	2 & 3	Open	Open	Open
3.45v - 3.6v (VRE)	1 & 2, 3 & 4, 5 & 6	2 & 3	Open	Closed	Open
+0.1v *	Open	1 & 2	Open	Closed	Open

Note: Pins designated should be in the closed position. * = If JV5 is closed, total voltage will increase by 0.1v.