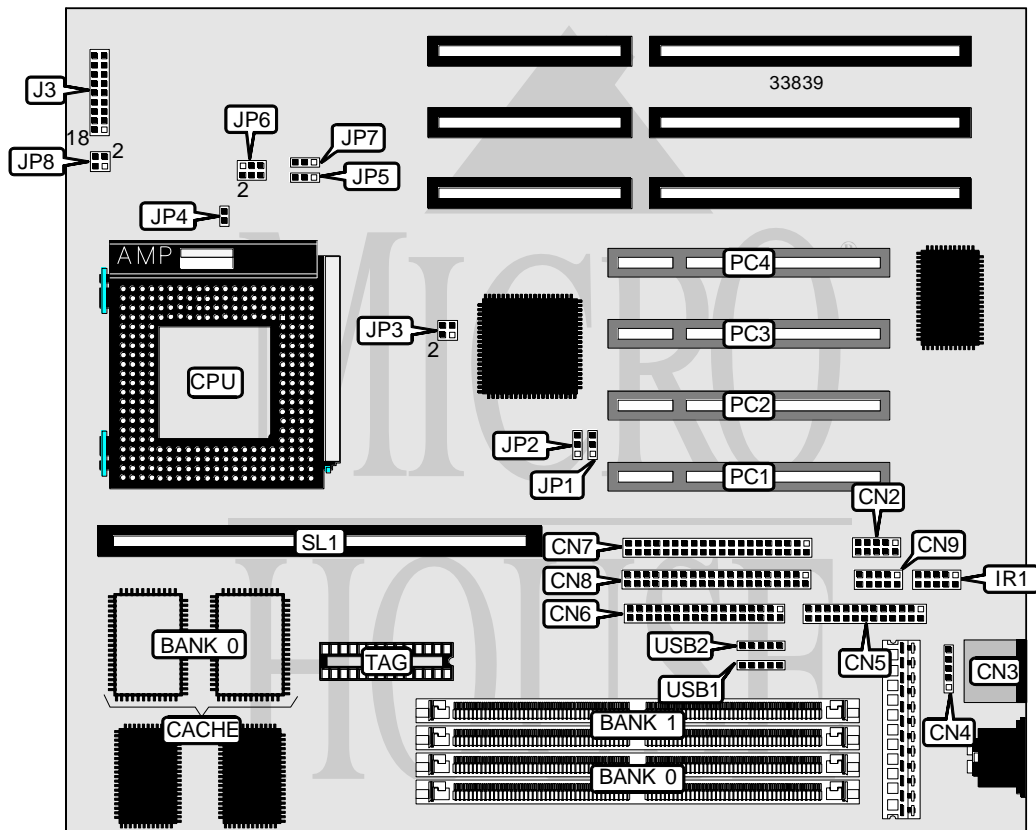


FONG KAI INDUSTRIAL, CO.

SL-586VT

Processor	CX M1/AM K5/Pentium
Processor Speed	75/90/100/120/133/150/166/180/200MHz
Chip Set	VIA
Video Chip Set	None
Maximum Onboard Memory	512MB
Maximum Video Memory	None
Cache	256/512KB
BIOS	Award
Dimensions	260mm x 220mm
I/O Options	32-bit PCI slots (4), floppy drive interface, green PC connector, IDE interfaces (2), parallel port, PS/2 mouse port, PS/2 mouse interface, serial ports (2), cache slot, IR connector, USB connectors (2)
NPU Options	None



Continued on next page. . .

FONG KAI INDUSTRIAL, CO.
SL - 586VT

... continued from previous page

CONNECTIONS			
Purpose	Location	Purpose	Location
Serial port 2	CN2	IDE interface LED	J3 pins 6 & 13
PS/2 mouse port	CN3	Green PC connector	J3 pins 7 & 12
PS/2 mouse interface	CN4	Reset switch	J3 pins 8 & 11
Parallel port	CN5	Turbo LED	J3 pins 9 & 10
Floppy drive interface	CN6	Speaker	J3 pins 15 - 18
IDE interface 2	CN7	32-bit PCI slots	PC1 - PC4
IDE interface 1	CN8	Cache slot	SL1
Serial port 1	CN9	USB connector	USB1
IR connector	IR1	USB connector	USB2
Power LED & keylock	J3 pins 1 - 5		

USER CONFIGURABLE SETTINGS		
Function	Label	Position
í PCI reset normal operation	JP1	Pins 1 & 2 closed
PCI reset for AMD network card	JP1	Pins 2 & 3 closed
í PS/2 mouse enabled	JP2	Pins 1 & 2 closed
PS/2 mouse disabled	JP2	Pins 2 & 3 closed
í CMOS memory normal operation	JP5	Pins 1 & 2 closed
CMOS memory clear	JP5	Pins 2 & 3 closed
í Flash BIOS voltage select 5v	JP7	Pins 1 & 2 closed
Flash BIOS voltage select 12v	JP7	Pins 2 & 3 closed

DRAM CONFIGURATION		
Size	Bank 0	Bank 1
8MB	(2) 1M x 36	None
12MB	(2) 1M x 36	(2) 512K x 36
16MB	(2) 2M x 36	None
16MB	(2) 1M x 36	(2) 1M x 36
24MB	(2) 2M x 36	(2) 1M x 36
32MB	(2) 4M x 36	None
32MB	(2) 2M x 36	(2) 2M x 36
40MB	(2) 4M x 36	(2) 1M x 36
48MB	(2) 4M x 36	(2) 2M x 36
64MB	(2) 8M x 36	None
64MB	(2) 4M x 36	(2) 4M x 36
72MB	(2) 8M x 36	(2) 1M x 36
80MB	(2) 8M x 36	(2) 2M x 36
96MB	(2) 8M x 36	(2) 4M x 36
128MB	(2) 8M x 36	(2) 8M x 36
128MB	(2) 16M x 36	None
256MB	(2) 16M x 36	(2) 16M x 36
512MB	(2) 32M x 36	(2) 32M x 36

Note: Board accepts EDO memory.

Continued on next page. . .

FONG KAI INDUSTRIAL, CO.

SL - 5 8 6 V T

... continued from previous page

CACHE CONFIGURATION			
Size	Bank 0	SL1	TAG
256KB	(2) 32K x 32	Not installed	(1) 8K x 8
256KB	None	256KB module installed	None
512KB	(2) 32K x 32	256KB module installed	None
512KB	(2) 64K x 32	Not installed	(1) 16K x 8
512KB	None	512KB module installed	None

CPU SPEED SELECTION (CYRIX)				
CPU speed	Clock speed	Multiplier	JP3	JP8
100MHz	66MHz	1.5x	3 & 4	Open
110MHz	55MHz	2x	Open	3 & 4
120MHz	60MHz	2x	1 & 2	3 & 4
133MHz	66MHz	2x	3 & 4	3 & 4

Note: Pins designated should be in the closed position.

CPU SPEED SELECTION (AMD)				
CPU speed	Clock speed	Multiplier	JP3	JP8
75MHz	50MHz	1.5x	1 & 2, 3 & 4	Open
90MHz	60MHz	1.5x	1 & 2	Open
100MHz	66MHz	1.5x	3 & 4	Open
150MHz	60MHz	2x	1 & 2	3 & 4
166MHz	66MHz	2x	3 & 4	3 & 4

Note: Pins designated should be in the closed position.

CPU SPEED SELECTION (INTEL)				
CPU speed	Clock speed	Multiplier	JP3	JP8
75MHz	50MHz	1.5x	1 & 2, 3 & 4	Open
90MHz	60MHz	1.5x	1 & 2	Open
100MHz	66MHz	1.5x	3 & 4	Open
120MHz	60MHz	2x	1 & 2	3 & 4
133MHz	66MHz	2x	3 & 4	3 & 4
150MHz	50MHz	3x	1 & 2, 3 & 4	1 & 2
166MHz	66MHz	2.5x	3 & 4	1 & 2, 3 & 4
180MHz	60MHz	3x	1 & 2	1 & 2
200MHz	66MHz	3x	3 & 4	1 & 2

Note: Pins designated should be in the closed position.

Continued on next page. . .

FONG KAI INDUSTRIAL, CO.
SL - 5 8 6 V T

... continued from previous page

CPU TYPE SELECTION	
Type	JP4
P54C	Closed
P55C	Open

CPU VOLTAGE SELECTION	
Voltage	JP6
2.5v	Pins 5 & 6 closed
3.3v	Pins 1 & 2 closed
3.45v	Pins 3 & 4 closed