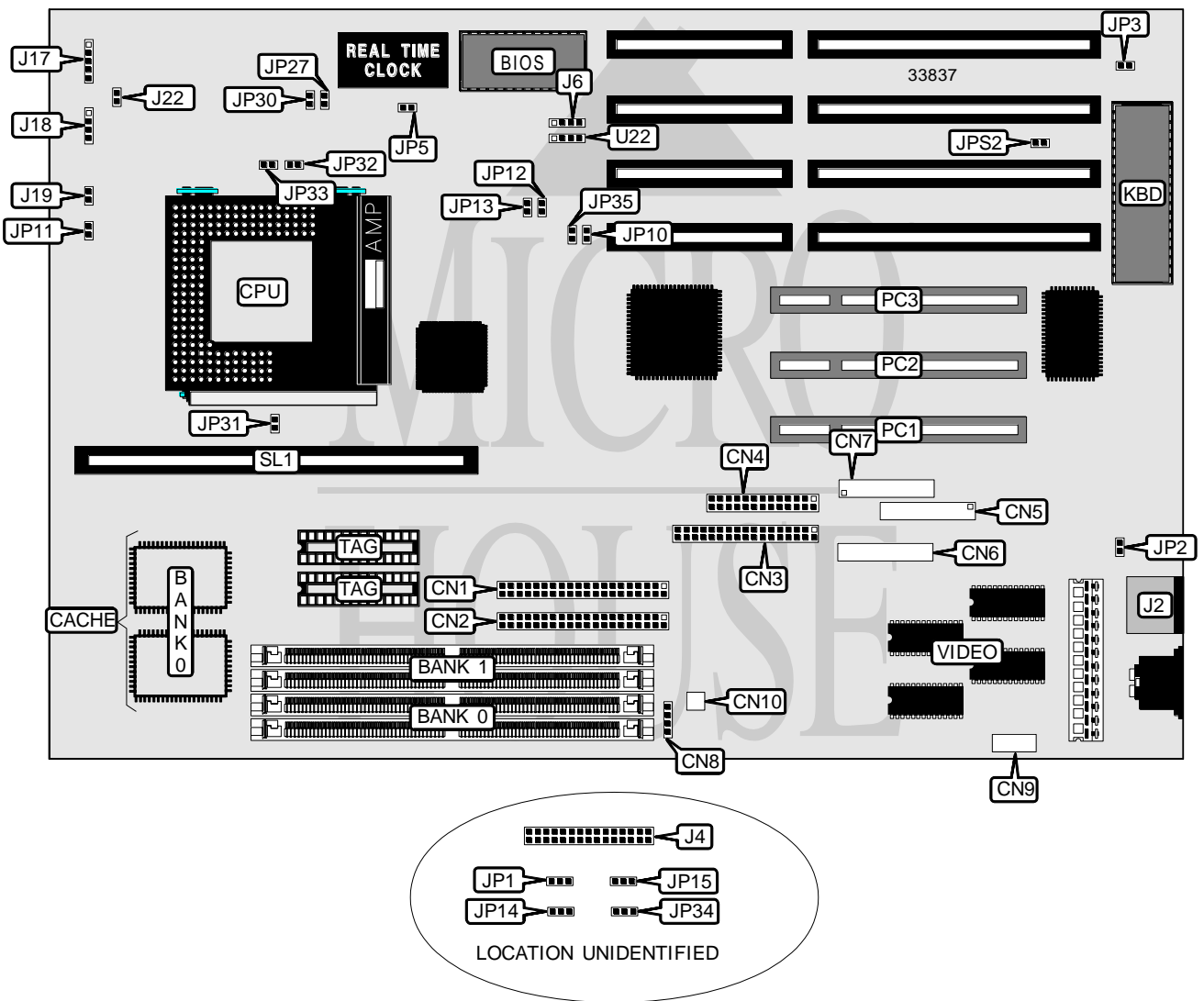


# SOYO COMPUTER CO., LTD.

## 5TS0/S2/S5

<b>Processor</b>	CX M1/AM K5/Pentium
<b>Processor Speed</b>	75/90/100/120/133/150/166/180/200MHz
<b>Chip Set</b>	Intel
<b>Video Chip Set</b>	S3
<b>Maximum Onboard Memory</b>	256MB (EDO supported)
<b>Maximum Video Memory</b>	2MB
<b>Cache</b>	256/512KB
<b>BIOS</b>	Award
<b>Dimensions</b>	330mm x 218mm
<b>I/O Options</b>	32-bit PCI slots (3), bus mouse port, floppy drive interface, IDE interfaces (2), parallel port, PS/2 mouse port, serial ports (2), VRM connector, USB connectors (2), VGA port, line out connector, TT connector, MPEG connector
<b>NPU Options</b>	None



Continued on next page...

SOYO COMPUTER CO., LTD.  
5TS0/S2/S5

... continued from previous page

CONNECTIONS			
Purpose	Location	Purpose	Location
IDE interface 2	CN1	VRM connector	J4
IDE interface 1	CN2	USB connector	J6
Floppy drive interface	CN3	Power LED & keylock	J17
Parallel port	CN4	Speaker	J18
Serial ports, VGA, line out connector	CN5	Reset switch	J19
MPEG connector (optional)	CN6	Turbo LED	J22
TT connector	CN7	IDE interface LED	JP11
Line out connector	CN8	32-bit PCI slots	PC1 - PC3
MPEG connector (optional)	CN9	Cache slot	SL1
MPEG connector (optional)	CN10	USB connector	U22
PS/2 mouse port	J2		

USER CONFIGURABLE SETTINGS		
Function	Label	Position
í Factory configured - do not alter	JP1	Pins 2 & 3 closed
í Factory configured - do not alter	JP2	Closed
í Monitor type select EGA/VGA	JP3	Closed
Monitor type select monochrome	JP3	Open
í CMOS memory normal operation	JP5	Open
CMOS memory clear	JP5	Closed
í Factory configured - do not alter	JP14	Pins 2 & 3 closed
í Factory configured - do not alter	JP15	Pins 2 & 3 closed
í Factory configured - do not alter	JP34	Pins 2 & 3 closed
í Factory configured - do not alter	JP35	Closed
í PS/2 mouse disabled	JPS2	Open
PS/2 mouse enabled	JPS2	Closed

DRAM CONFIGURATION		
Size	Bank 0	Bank 1
4MB	(2) 512K x 36	None
8MB	(2) 1M x 36	None
8MB	(2) 512K x 36	(2) 512K x 36
12MB	(2) 1M x 36	(2) 512K x 36
16MB	(2) 2M x 36	None
16MB	(2) 1M x 36	(2) 1M x 36
20MB	(2) 512K x 36	(2) 2M x 36
24MB	(2) 2M x 36	(2) 1M x 36
32MB	(2) 4M x 36	None
32MB	(2) 2M x 36	(2) 2M x 36
36MB	(2) 512K x 36	(2) 4M x 36
40MB	(2) 4M x 36	(2) 1M x 36
48MB	(2) 2M x 36	(2) 4M x 36

Continued on next page. ...

SOYO COMPUTER CO., LTD.  
5TS0/S2/S5

... continued from previous page

DRAM CONFIGURATION (CON'T)		
Size	Bank 0	Bank 1
64MB	(2) 8M x 36	None
64MB	(2) 4M x 36	(2) 4M x 36
68MB	(2) 512K x 36	(2) 8M x 36
72MB	(2) 8M x 36	(2) 1M x 36
80MB	(2) 2M x 36	(2) 8M x 36
96MB	(2) 8M x 36	(2) 4M x 36
128MB	(2) 8M x 36	(2) 8M x 36
128MB	(2) 16M x 36	None
256MB	(2) 16M x 36	(2) 16M x 36

Note: Board accepts EDO memory. Board also accepts x 32 SIMMs. Banks are interchangeable.

CACHE CONFIGURATION			
Size	Bank 0	SL1	TAG
256KB	(2) 32K x 32	Not installed	(2) 16K x 8
256KB	None	256KB module installed	(2) 16K x 8
512KB	(2) 32K x 32	256KB module installed	(2) 16K x 8

CACHE JUMPER CONFIGURATION	
Size	JP31
256KB	Open
512KB	Closed

CPU SPEED SELECTION (CYRIX)						
CPU speed	Clock speed	Multiplier	JP12	JP13	JP32	JP33
120MHz	50MHz	2x	Closed	Closed	Closed	Open
133MHz	55MHz	2x	Open	Open	Closed	Open
150MHz	60MHz	2x	Closed	Open	Closed	Open
166MHz	66MHz	2x	Open	Closed	Closed	Open

CPU SPEED SELECTION (AMD)						
CPU speed	Clock speed	Multiplier	JP12	JP13	JP32	JP33
75MHz	50MHz	1.5x	Closed	Closed	Open	Open
90MHz	55MHz	1.5x	Open	Open	Open	Open
90MHz	60MHz	1.5x	Closed	Open	Open	Open
100MHz	55MHz	1.5x	Open	Open	Open	Open
100MHz	66MHz	1.5x	Open	Closed	Open	Open
120MHz	60MHz	1.5x	Closed	Open	Open	Open
133MHz	66MHz	1.5x	Open	Closed	Open	Open
150MHz	50MHz	2x	Closed	Open	Closed	Open
166MHz	66MHz	2x	Open	Closed	Closed	Open

Continued on next page. . .

**SOYO COMPUTER CO., LTD.**  
**5TS0/S2/S5**

... continued from previous page

CPU SPEED SELECTION (INTEL)						
CPU speed	Clock speed	Multiplier	JP12	JP13	JP32	JP33
75MHz	50MHz	1.5x	Closed	Closed	Open	Open
90MHz	60MHz	1.5x	Closed	Open	Open	Open
100MHz	66MHz	1.5x	Open	Closed	Open	Open
100MHz	50MHz	2x	Closed	Closed	Closed	Open
120MHz	60MHz	2x	Closed	Open	Closed	Open
133MHz	66MHz	2x	Open	Closed	Closed	Open
150MHz	60MHz	2.5x	Closed	Open	Closed	Closed
166MHz	66MHz	2.5x	Open	Closed	Closed	Closed
180MHz	60MHz	3x	Closed	Open	Open	Closed
200MHz	66MHz	3x	Open	Closed	Open	Closed

CPU VOLTAGE SELECTION		
Voltage	JP27	JP30
3.3v (STD & VR)	Open	Closed
3.45 - 3.6v (VRE)	Closed	Open