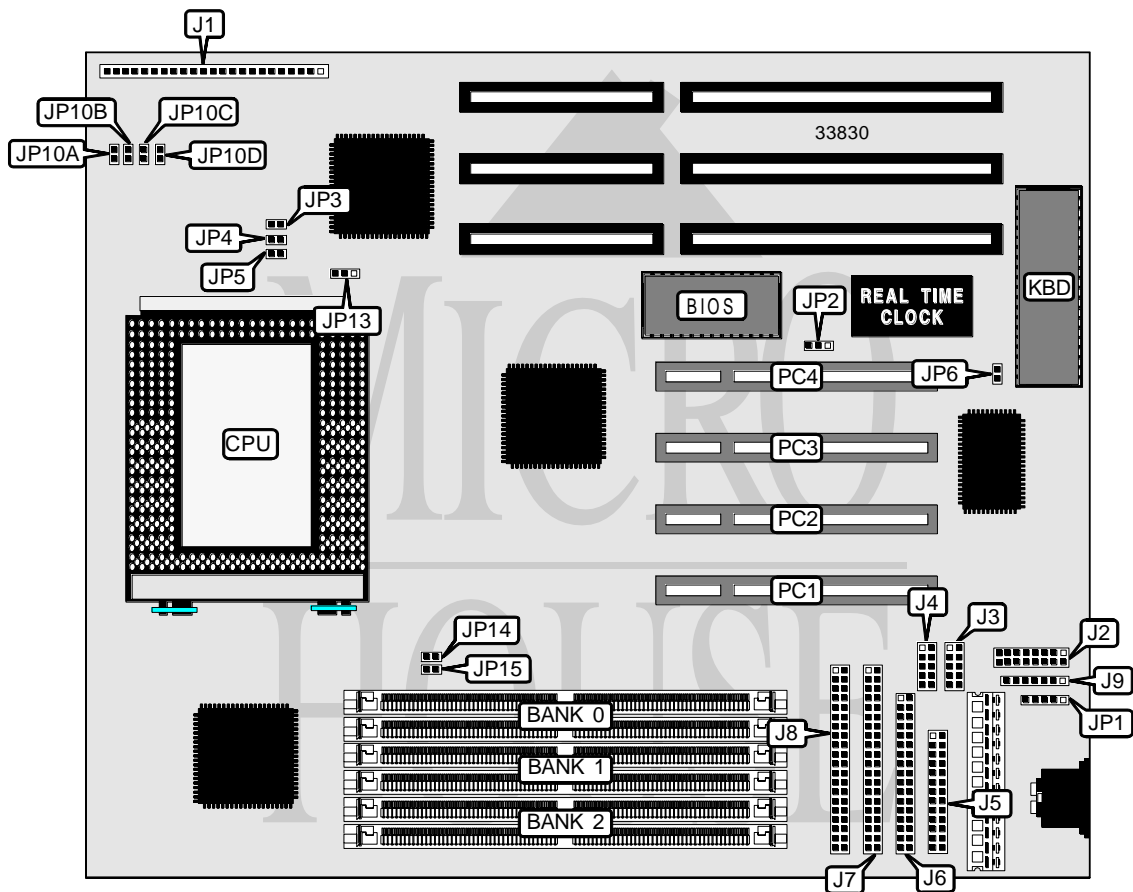


EPOX COMPUTER CO., LTD.

P P 6 - N B

Processor	Pentium Pro
Processor Speed	133/150/166/180/200/233MHz
Chip Set	Intel
Video Chip Set	None
Maximum Onboard Memory	768MB (EDO supported)
Maximum Video Memory	None
Cache	256/512KB (located on Pentium Pro CPU)
BIOS	Award
Dimensions	254mm x 218mm
I/O Options	32-bit PCI slots (4), floppy drive interface, green PC connector, IDE interfaces (2), parallel port, PS/2 mouse interface, serial ports (2), IR connector, USB connector
NPU Options	None



Continued on next page . . .

EPOX COMPUTER CO., LTD.
P P 6 - N B

... continued from previous page

CONNECTIONS			
Purpose	Location	Purpose	Location
Power LED & keylock	J1 pins 1 - 5	Serial port 1	J4
Speaker	J1 pins 7 - 10	Parallel port	J5
Reset switch	J1 pins 12 & 13	Floppy drive interface	J6
Turbo LED	J1 pins 15 & 16	IDE interface 2	J7
Green PC connector	J1 pins 18 & 19	IDE interface 1	J8
Green PC LED	J1 pins 21 & 22	IR connector	J9
IDE interface LED	J1 pins 24 & 25	PS/2 mouse interface	JP1
USB connector	J2	Chassis fan power	JP13
Serial port 2	J3	32-bit PCI slots	PC1 - PC4

USER CONFIGURABLE SETTINGS		
Function	Label	Position
í Flash BIOS voltage select 5v	JP2	Pins 2 & 3 closed
Flash BIOS voltage select 12v	JP2	Pins 1 & 2 closed
í Onboard SMC chip enabled	JP6	Open
Onboard SMC chip disabled	JP6	Closed

DRAM CONFIGURATION			
Size	Bank 0	Bank 1	Bank 2
8MB	(2) 1M x 36	None	None
16MB	(2) 1M x 36	(2) 1M x 36	None
16MB	(2) 2M x 36	None	None
24MB	(2) 1M x 36	(2) 1M x 36	(2) 1M x 36
24MB	(2) 1M x 36	(2) 2M x 36	None
32MB	(2) 1M x 36	(2) 1M x 36	(2) 2M x 36
32MB	(2) 2M x 36	(2) 2M x 36	None
32MB	(2) 4M x 36	None	None
40MB	(2) 1M x 36	(2) 2M x 36	(2) 2M x 36
40MB	(2) 1M x 36	(2) 4M x 36	None
48MB	(2) 2M x 36	(2) 2M x 36	(2) 2M x 36
48MB	(2) 2M x 36	(2) 4M x 36	None
56MB	(2) 1M x 36	(2) 2M x 36	(2) 4M x 36
64MB	(2) 4M x 36	(2) 4M x 36	None
64MB	(2) 8M x 36	None	None
72MB	(2) 1M x 36	(2) 4M x 36	(2) 4M x 36
72MB	(2) 1M x 36	(2) 8M x 36	None
80MB	(2) 2M x 36	(2) 4M x 36	(2) 4M x 36
80MB	(2) 2M x 36	(2) 8M x 36	None
96MB	(2) 4M x 36	(2) 4M x 36	(2) 4M x 36
96MB	(2) 4M x 36	(2) 8M x 36	None
104MB	(2) 1M x 36	(2) 4M x 36	(2) 8M x 36
112MB	(2) 2M x 36	(2) 4M x 36	(2) 8M x 36

Continued on next page. ...

EPOX COMPUTER CO., LTD.

P P 6 - N B

... continued from previous page

DRAM CONFIGURATION (CON'T)			
Size	Bank 0	Bank 1	Bank 2
128MB	(2) 8M x 36	(2) 8M x 36	None
136MB	(2) 1M x 36	(2) 8M x 36	(2) 8M x 36
136MB	(2) 1M x 36	(2) 16M x 36	None
144MB	(2) 2M x 36	(2) 8M x 36	(2) 8M x 36
160MB	(2) 4M x 36	(2) 8M x 36	(2) 8M x 36
192MB	(2) 8M x 36	(2) 8M x 36	(2) 8M x 36
192MB	(2) 8M x 36	(2) 16M x 36	None
256MB	(2) 16M x 36	(2) 16M x 36	None
320MB	(2) 8M x 36	(2) 16M x 36	(2) 16M x 36
384MB	(2) 16M x 36	(2) 16M x 36	(2) 16M x 36
768MB	(2) 32M x 36	(2) 32M x 36	(2) 32M x 36

Note: Board accepts EDO memory. Board also accepts x 32 SIMMs.

CACHE CONFIGURATION
Note: 256KB/512KB cache is located on the Pentium Pro CPU.

CPU SPEED SELECTION							
CPU speed	Clock speed	Multiplier	JP3	JP4	JP5	JP14	JP15
133MHz	66MHz	2x	Closed	Closed	Closed	Open	Closed
150MHz	50MHz	3x	Closed	Closed	Open	Closed	Closed
166MHz	66MHz	2.5x	Open	Closed	Closed	Open	Closed
180MHz	60MHz	3x	Closed	Closed	Open	Closed	Open
200MHz	66MHz	3x	Closed	Closed	Open	Open	Closed
233MHz	60MHz	3.5x	Open	Closed	Open	Open	Closed

CPU VOLTAGE SELECTION				
Voltage	JP10A	JP10B	JP10C	JP10D
í Auto	Open	Open	Open	Open
2.1v	Open	Open	Open	Closed
2.2v	Open	Open	Closed	Open
2.3v	Open	Open	Closed	Closed
2.4v	Open	Closed	Open	Open
2.5v	Open	Closed	Open	Closed
2.6v	Open	Closed	Closed	Open
2.7v	Open	Closed	Closed	Closed
2.8v	Closed	Open	Open	Open
2.9v	Closed	Open	Open	Closed
3.0v	Closed	Open	Closed	Open
3.1v	Closed	Open	Closed	Closed
3.2v	Closed	Closed	Open	Open
3.3v	Closed	Closed	Open	Closed
3.4v	Closed	Closed	Closed	Open
3.5v	Closed	Closed	Closed	Closed