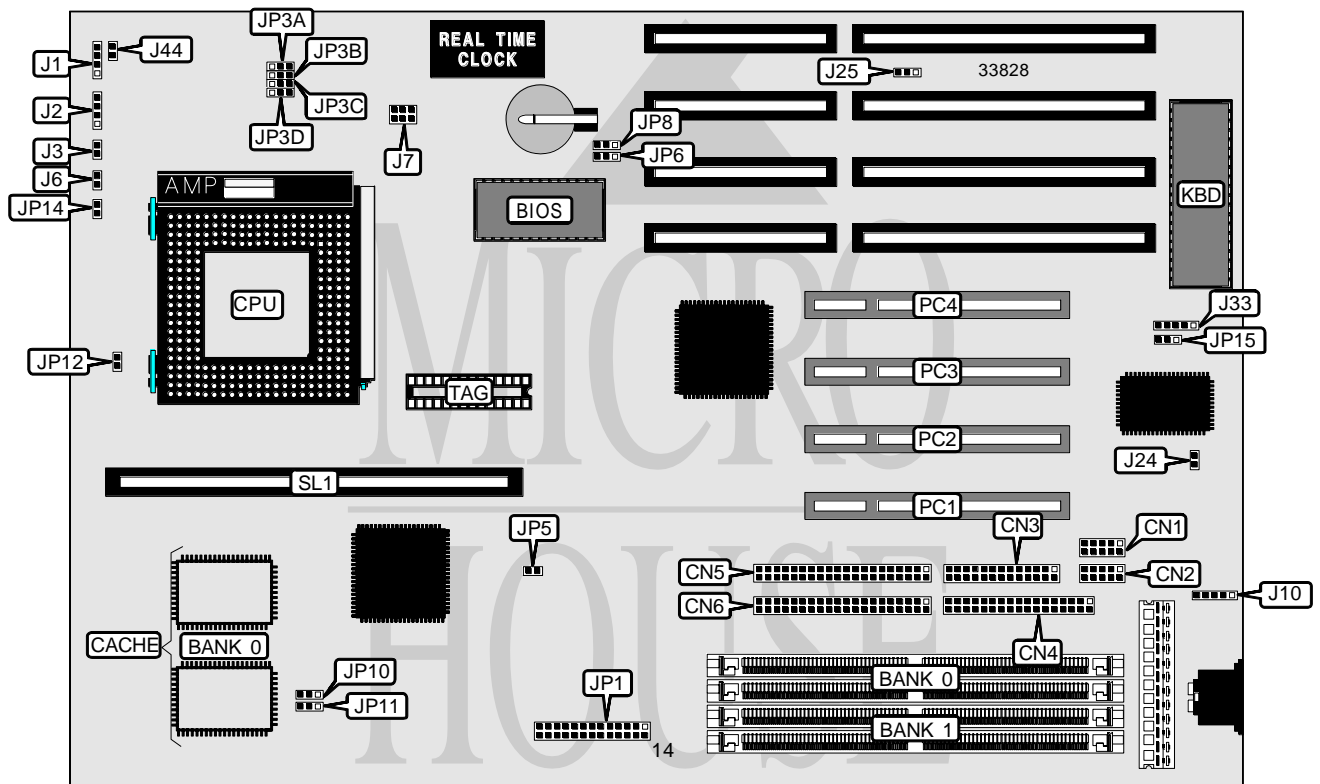


EPOX COMPUTER CO., LTD.

P 5 5 - T H

Processor	CX M1/Pentium
Processor Speed	75/90/100/120/133/150/166/180/200MHz
Chip Set	Intel
Video Chip Set	None
Maximum Onboard Memory	512MB (EDO supported)
Maximum Video Memory	None
Cache	256/512KB
BIOS	Award
Dimensions	330mm x 218mm
I/O Options	32-bit PCI slots (4), floppy drive interface, green PC connector, IDE interfaces (2), parallel port, PS/2 mouse interface, serial ports (2), cache slot, IR connector
NPU Options	None



Continued on next page...

EPOX COMPUTER CO., LTD.
P 5 5 - T H

... continued from previous page

CONNECTIONS			
Purpose	Location	Purpose	Location
Serial port 1	CN1	Green PC LED	J6
Serial port 2	CN2	Chassis fan power	J7
Parallel port	CN3	PS/2 mouse interface	J10
Floppy drive interface	CN4	IR connector	J33
IDE interface 2	CN5	Turbo switch	J44
IDE interface 1	CN6	IDE interface LED	JP5
Power LED & keylock	J1	Green PC connector	JP14
Speaker	J2	32-bit PCI slots	PC1 - PC4
Reset switch	J3	Cache slot	SL1

USER CONFIGURABLE SETTINGS		
Function	Label	Position
í SMC chip enabled	J24	Open
SMC chip disabled	J24	Closed
Flash BIOS voltage select 12v	JP6	Pins 2 & 3 closed
Flash BIOS voltage select 5v	JP6	Pins 1 & 2 closed
í Flash BIOS normal operation	JP8	Pins 1 & 2 closed
Flash BIOS boot block enabled	JP8	Pins 2 & 3 closed
í Factory configured - do not alter	JP12	Unidentified
í Clock rate set as AT CLOCK	JP15	Pins 1 & 2 closed
Clock rate set as 12MHz	JP15	Pins 2 & 3 closed

DRAM CONFIGURATION		
Size	Bank 0	Bank 1
8MB	(2) 1M x 36	None
16MB	(2) 1M x 36	(2) 1M x 36
16MB	(2) 2M x 36	None
24MB	(2) 2M x 36	(2) 1M x 36
32MB	(2) 2M x 36	(2) 2M x 36
32MB	(2) 4M x 36	None
40MB	(2) 4M x 36	(2) 1M x 36
48MB	(2) 2M x 36	(2) 4M x 36
64MB	(2) 4M x 36	(2) 4M x 36
64MB	(2) 8M x 36	None
72MB	(2) 8M x 36	(2) 1M x 36
80MB	(2) 8M x 36	(2) 2M x 36
96MB	(2) 4M x 36	(2) 8M x 36
96MB	(2) 8M x 36	(2) 4M x 36
128MB	(2) 8M x 36	(2) 8M x 36
256MB	(2) 16M x 36	(2) 16M x 36
512MB	(2) 32M x 36	(2) 32M x 36

Note: Board accepts EDO memory. Board also accepts x 32 SIMMs. Banks are interchangeable.

Continued on next page. ...

EPOX COMPUTER CO., LTD.

P55 - TH

... continued from previous page

CACHE CONFIGURATION			
Size	Bank 0	TAG	SL1
256KB (A)	(2) 32K x 32	(1) 32K x 8	Not installed
256KB (B)	None	None	256KB module installed
512KB (A)	(2) 32K x 32	(1) 32K x 8	256KB module installed
512KB (B)	(2) 64K x 32	(1) 32K x 8	Not installed
512KB (C)	None	None	512KB module installed

CACHE JUMPER CONFIGURATION		
Size	JP10	JP11
256KB (A)	Pins 1 & 2 closed	Pins 1 & 2 closed
256KB (B)	Pins 1 & 2 closed	Pins 2 & 3 closed
512KB (A)	Pins 1 & 2 closed	Pins 1 & 2 closed
512KB (B)	Pins 2 & 3 closed	Pins 1 & 2 closed
512KB (C)	Pins 1 & 2 closed	Pins 2 & 3 closed

CPU SPEED SELECTION (CYRIX)		
CPU speed	Clock speed	JP1
100MHz	66MHz	Pins 10 & 23 closed
120MHz	60MHz	Pins 4 & 17 closed
133MHz	66MHz	Pins 5 & 18 closed

CPU SPEED SELECTION (INTEL)		
CPU speed	Clock speed	JP1
75MHz	50MHz	Pins 1 & 14 closed
90MHz	60MHz	Pins 2 & 15 closed
100MHz	66MHz	Pins 3 & 16 closed
120MHz	60MHz	Pins 4 & 17 closed
133MHz	66MHz	Pins 5 & 18 closed
150MHz	60MHz	Pins 6 & 19 closed
166MHz	66MHz	Pins 7 & 20 closed
180MHz	60MHz	Pins 8 & 21 closed
200MHz	66MHz	Pins 9 & 22 closed

CPU TYPE SELECTION				
Type	JP3A	JP3B	JP3C	JP3D
CX M1	1 & 2	1 & 2	1 & 2	1 & 2
P54C/P54CS/P54CT/P54CTB	1 & 2	1 & 2	1 & 2	1 & 2
P55C	2 & 3	2 & 3	2 & 3	2 & 3

Note: Pins designated should be in the closed position.

CPU AT BUS CLOCK SELECTION	
Setting	J25
PCICLK/4	Pins 2 & 3 closed
PCICLK/3	Pins 1 & 2 closed