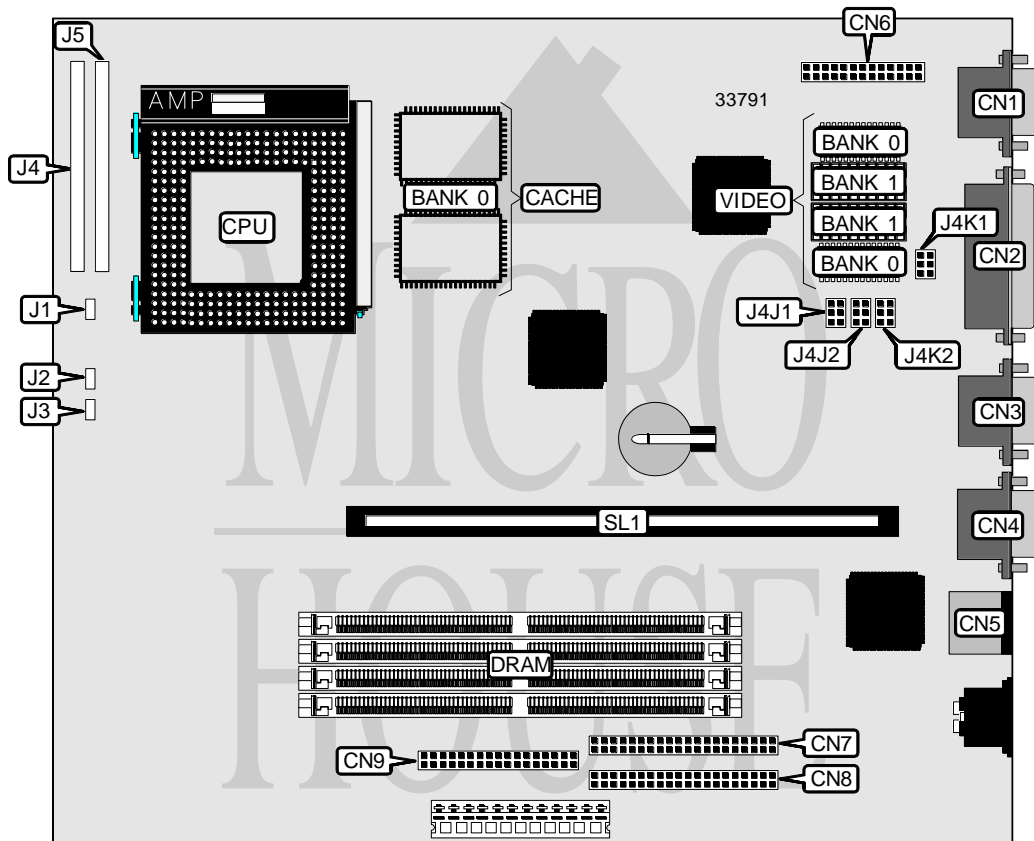



IBM CORPORATION PC 330/350 SERIES (TYPE 65X6) (100-166MHZ)

Processor	Pentium
Processor Speed	75/90/100/120/133/150/166MHz
Chip Set	Unidentified
Video Chip Set	Unidentified
Maximum Onboard Memory	128MB
Maximum Video Memory	1MB
Cache	256KB
BIOS	Unidentified
Dimensions	254mm x 218mm
I/O Options	Floppy drive interface, IDE interfaces (2), parallel port, PS/2 mouse port, serial ports (2), VESA feature connector, VGA port, riser slot
NPU Options	None




 LOCATION UNIDENTIFIED

Continued on next page . . .

IBM CORPORATION

PC 330/350 SERIES (TYPE 65X6) (100-166MHZ)

... continued from previous page

CONNECTIONS			
Purpose	Location	Purpose	Location
VGA port	CN1	Floppy drive interface	CN9
Parallel port	CN2	Chassis fan power	J1
Serial port 2	CN3	IDE interface LED	J2
Serial port 1	CN4	Power LED	J3
PS/2 mouse port	CN5	Front panel connector	J4
VESA feature connector	CN6	Front panel connector	J5
IDE interface	CN7	Riser slot	SL1
IDE interface	CN8		

USER CONFIGURABLE SETTINGS		
Function	Label	Position
í Flash BIOS normal operation	J4A2	Pins 1 & 2 closed
Flash BIOS flash enabled	J4A2	Pins 2 & 3 closed
í Setup access enabled	J4K1	Pins 4 & 5 closed
Setup access disabled	J4K1	Pins 5 & 6 closed
í CMOS memory normal operation	J4K2	Pins 1 & 2 closed
CMOS memory clear	J4K2	Pins 2 & 3 closed
í Password normal operation	J4K2	Pins 4 & 5 closed
Password clear	J4K2	Pins 5 & 6 closed

DRAM CONFIGURATION		
Size	Bank 0	Bank 1
8MB	(2) 1M x 36	None
16MB	(2) 2M x 36	None
16MB	(2) 1M x 36	(2) 1M x 36
24MB	(2) 2M x 36	(2) 1M x 36
32MB	(2) 4M x 36	None
32MB	(2) 2M x 36	(2) 2M x 36
40MB	(2) 4M x 36	(2) 1M x 36
48MB	(2) 4M x 36	(2) 2M x 36
64MB	(2) 8M x 36	None
64MB	(2) 4M x 36	(2) 4M x 36
72MB	(2) 8M x 36	(2) 1M x 36
80MB	(2) 8M x 36	(2) 2M x 36
128MB	(2) 8M x 36	(2) 8M x 36

Note: Board also accepts x 32 SIMMs. The location of banks 0 & 1 are unidentified.

CACHE CONFIGURATION	
Size	Bank 0
256KB	(2) 32K x 32

Continued on next page...

IBM CORPORATION

PC 330/350 SERIES (TYPE 65X6) (100-166MHZ)

... continued from previous page

VIDEO MEMORY CONFIGURATION		
Size	Bank 0	Bank 1
512KB	512KB	None
1MB	512KB	512KB

Note: Bank 0 is factory installed and is not configurable. The size of the video memory chips are unidentified.

CPU SPEED SELECTION					
CPU speed	Clock speed	Multiplier	J4J1	J4J2	J4K1
75MHz	50MHz	1.5x	2 & 3, 4 & 5	2 & 3, 4 & 5	2 & 3
90MHz	60MHz	1.5x	2 & 3, 5 & 6	2 & 3, 4 & 5	1 & 2
100MHz	66MHz	1.5x	1 & 2, 4 & 5	2 & 3, 4 & 5	1 & 2
120MHz	60MHz	2x	2 & 3, 5 & 6	2 & 3, 5 & 6	1 & 2
133MHz	66MHz	2x	1 & 2, 4 & 5	2 & 3, 5 & 6	1 & 2
150MHz	60MHz	2.5x	2 & 3, 5 & 6	1 & 2, 5 & 6	1 & 2
166MHz	66MHz	2.5x	1 & 2, 4 & 5	1 & 2, 5 & 6	1 & 2

Note: Pins designated should be in the closed position.