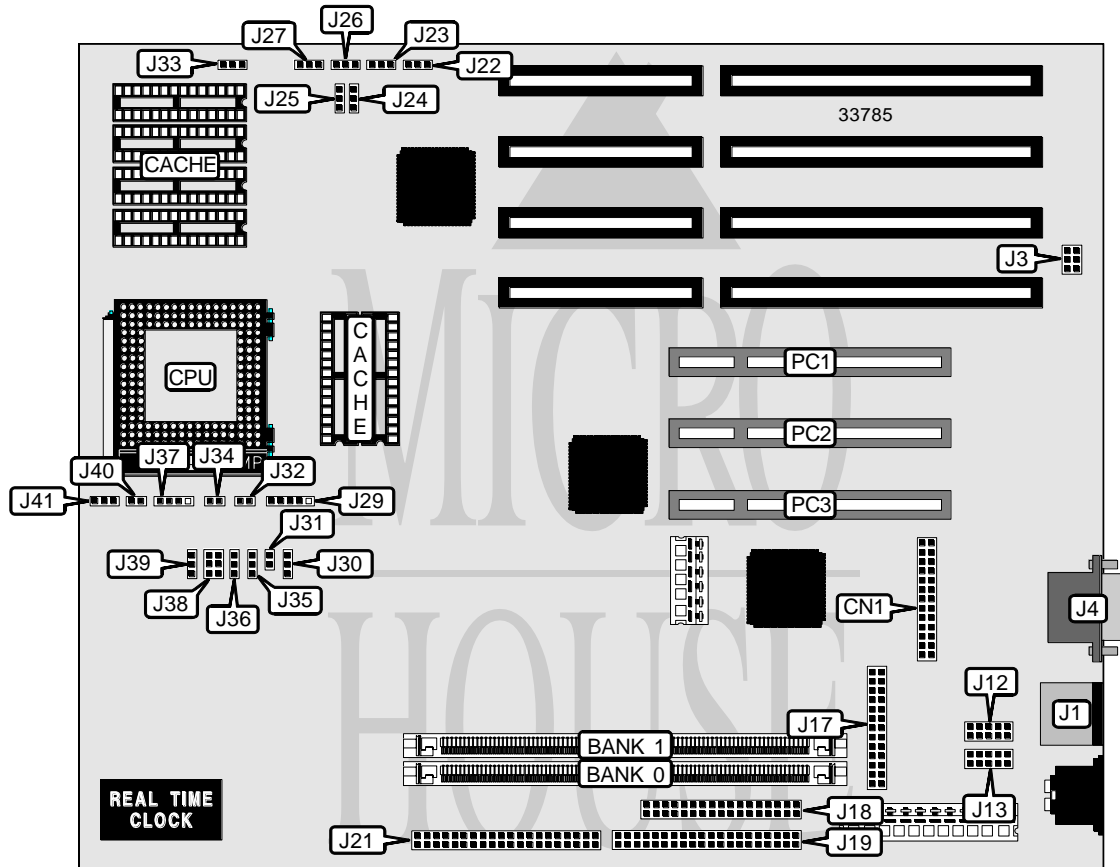


INTEL CORPORATION

4DX2-66

| | |
|-------------------------------|--|
| Processor | 80486DX/ODP486DX/80486DX2/80486DX4/P24D/P24T |
| Processor Speed | 25/50(internal)/50/66(internal)/75(internal)/100(internal)MHz |
| Chip Set | Unidentified |
| Video Chip Set | Cirrus Logic |
| Maximum Onboard Memory | 64MB |
| Maximum Video Memory | 1MB |
| Cache | 128KB |
| BIOS | Phoenix |
| Dimensions | 254mm x 218mm |
| I/O Options | 32-bit PCI slots (3), floppy drive interface, IDE interfaces (2), parallel port, PS/2 mouse port, serial ports (2), VESA feature connector, VGA port |
| NPU Options | None |



Continued on next page . . .

INTEL CORPORATION

4DX2-66

... continued from previous page

| CONNECTIONS | | | |
|------------------------|----------|---------------------|-----------|
| Purpose | Location | Purpose | Location |
| VESA feature connector | CN1 | IDE interface 1 | J21 |
| PS/2 mouse port | J1 | Power LED & keylock | J29 |
| VGA port | J4 | Reset switch | J32 |
| Serial port 1 | J12 | IDE interface LED | J34 |
| Serial port 2 | J13 | Speaker | J37 |
| Parallel port | J17 | Turbo LED | J40 |
| Floppy drive interface | J18 | Chassis fan power | J41 |
| IDE interface 2 | J19 | 32-bit PCI slots | PC1 - PC3 |

| USER CONFIGURABLE SETTINGS | | |
|-------------------------------|-------|-------------------|
| Function | Label | Position |
| í Secondary IDE DMA disabled | J26 | Pins 2 & 3 closed |
| Secondary IDE DMA enabled | J26 | Pins 1 & 2 closed |
| í Password normal operation | J31 | Open |
| Password clear | J31 | Closed |
| í Boot block normal operation | J35 | Pins 2 & 3 closed |
| Boot block boot from floppy | J35 | Pins 1 & 2 closed |
| í On board I/O enabled | J36 | Pins 2 & 3 closed |
| On board I/O disabled | J36 | Pins 1 & 2 closed |

| DRAM CONFIGURATION | | |
|--------------------|-------------|-------------|
| Size | Bank 0 | Bank 1 |
| 4MB | (1) 1M x 36 | None |
| 8MB | (1) 1M x 36 | (1) 1M x 36 |
| 8MB | (1) 2M x 36 | None |
| 12MB | (1) 2M x 36 | (1) 1M x 36 |
| 16MB | (1) 2M x 36 | (1) 2M x 36 |
| 16MB | (1) 4M x 36 | None |
| 20MB | (1) 4M x 36 | (1) 1M x 36 |
| 24MB | (1) 4M x 36 | (1) 2M x 36 |
| 32MB | (1) 4M x 36 | (1) 4M x 36 |
| 32MB | (1) 8M x 36 | None |
| 36MB | (1) 1M x 36 | (1) 8M x 36 |
| 40MB | (1) 2M x 36 | (1) 8M x 36 |
| 48MB | (1) 4M x 36 | (1) 8M x 36 |
| 64MB | (1) 8M x 36 | (1) 8M x 36 |

Note: Board also accepts x 32 SIMMs. Banks are interchangeable.

| DRAM TYPE CONFIGURATION | |
|-------------------------|-------------------|
| Type | J30 |
| x 32 SIMMs | Pins 2 & 3 closed |
| x 36 SIMMs | Pins 1 & 2 closed |

Continued on next page...

INTEL CORPORATION

4DX2-66

... continued from previous page

| CACHE CONFIGURATION | |
|---|--------|
| Size | Bank 0 |
| 128KB | 128KB |
| Note: The location of bank 0 is unidentified. The size of the cache chips are unidentified. | |

| CACHE JUMPER CONFIGURATION | | |
|----------------------------|-------------------|-------------------|
| Size | J24 | J25 |
| 128KB | Pins 2 & 3 closed | Pins 2 & 3 closed |

| VIDEO MEMORY CONFIGURATION |
|--|
| Note: Board is factory installed with 1MB of video memory and is not configurable. The location is unidentified. |

| CPU SPEED SELECTION | |
|---------------------|-------------------|
| Speed | J39 |
| 25MHz | Pins 2 & 3 closed |
| 50MHz | Pins 2 & 3 closed |
| 66MHz | Pins 1 & 2 closed |
| 75MHz | Pins 2 & 3 closed |
| 100MHz | Pins 1 & 2 closed |

| CPU TYPE SELECTION | |
|--------------------|-------------------|
| Type | J38 |
| 80486DX | Pins 3 & 4 closed |
| ODP486DX | Pins 1 & 2 closed |
| 80486DX2 | Pins 3 & 4 closed |
| 8086DX4 | Pins 3 & 4 closed |
| P24D | Pins 5 & 6 closed |
| P24T | Pins 5 & 6 closed |

| CPU TYPE SELECTION | |
|--|-------------------|
| Type | J27 |
| í SL-series | Pins 2 & 3 closed |
| Non SL-series | Pins 1 & 2 closed |
| Note: Do not change this from the default setting. | |

| CPU MULTIPLIER SELECTION | |
|--------------------------|-------------------|
| Multiplier | J33 |
| Reserved | Pins 1 & 2 closed |
| 2x | Pins 2 & 3 closed |
| í 3x | Open |

Continued on next page...

INTEL CORPORATION

4DX2-66

... continued from previous page

| CPU VOLTAGE SELECTION | |
|-----------------------|--------------------------|
| Voltage | J3 |
| 3.3v | Pins 1 & 3, 2 & 4 closed |
| 5v | Pins 3 & 5, 4 & 6 closed |

| DMA CHANNEL SELECTION | | |
|-----------------------|-------------------|-------------------|
| Channel | J22 | J23 |
| 1 | Pins 1 & 2 closed | Pins 1 & 2 closed |
| 3 | Pins 2 & 3 closed | Pins 2 & 3 closed |