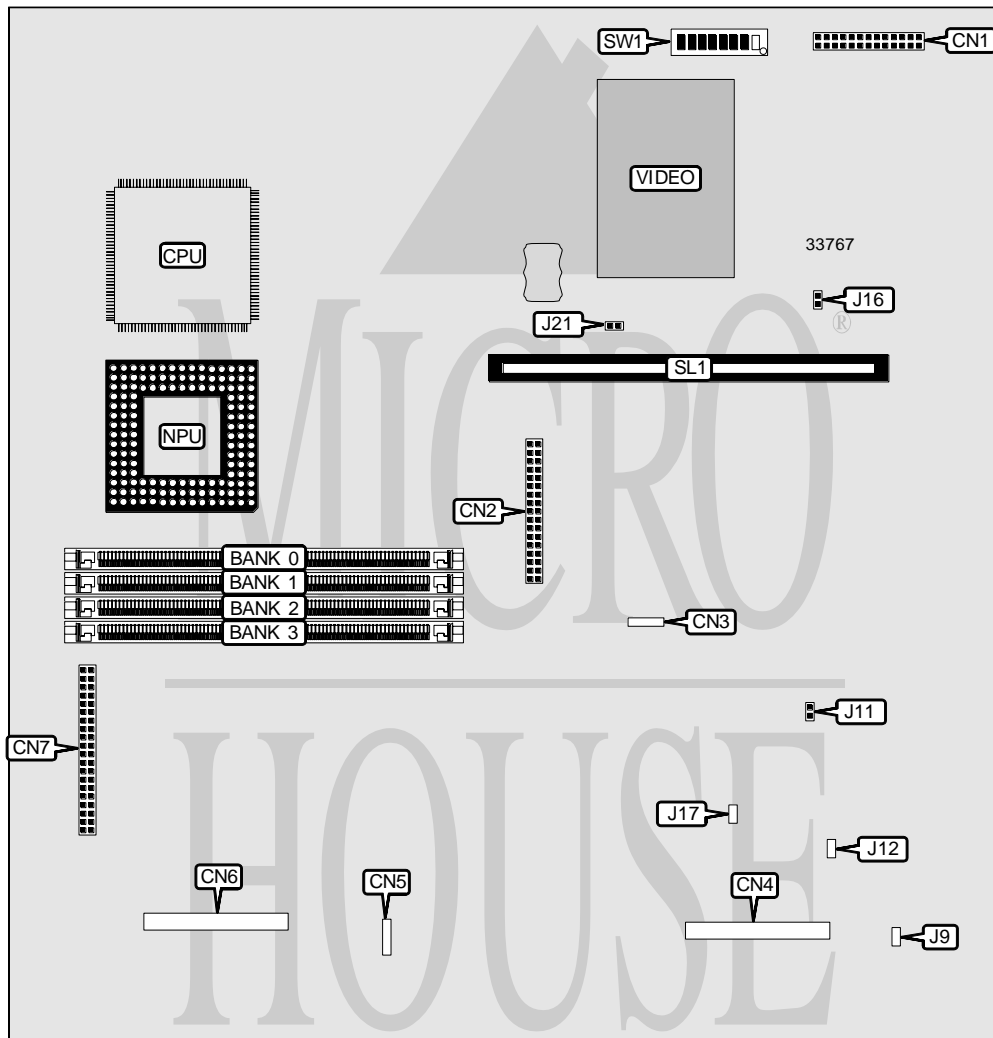


# TANDY/RADIO SHACK SENSATION! (250-1650)

<b>Processor</b>	80486SX/80487SX/ODP486
<b>Processor Speed</b>	25MHz
<b>Chip Set</b>	Unidentified
<b>Video Chip Set</b>	Unidentified
<b>Maximum Onboard Memory</b>	32MB
<b>Maximum Video Memory</b>	1MB
<b>Cache</b>	None
<b>BIOS</b>	Unidentified
<b>Dimensions</b>	394mm x 381mm
<b>I/O Options</b>	CD-ROM interface, floppy drive interface, IDE interface, parallel port, PS/2 mouse port, serial port, VGA feature connector, VGA port, riser slot, audio connector, fax/data modem connector, CD-ROM adapter, modem port MIDI/game port, microphone connector, headphone connector, line out connector
<b>NPU Options</b>	80487SX



*Continued on next page . . .*

# TANDY/RADIO SHACK SENSATION! (250-1650)

... continued from previous page

CONNECTIONS			
Purpose	Location	Purpose	Location
VGA feature connector	CN1	Serial port	Unidentified
Floppy drive interface	CN2	Parallel port	Unidentified
CD audio connector	CN3	MIDI/game port	Unidentified
Fax/data modem connector	CN4	Microphone connector	Unidentified
CD-ROM interface	CN5	Headphone connector	Unidentified
CD-ROM adapter	CN6	Line out connector	Unidentified
IDE interface	CN7	VGA port	Unidentified
PS/2 mouse port	Unidentified	Riser slot	SL1

USER CONFIGURABLE SETTINGS		
Function	Label	Position
í Factory configured - do not alter	J9	Unidentified
í Synthesizer IRQ15 enabled	J11	Closed
Synthesizer IRQ15 disabled	J11	Open
í Factory configured - do not alter	J12	Unidentified
í Monitor type select color	J16	Closed
Monitor type select monochrome	J16	Open
í Factory configured - do not alter	J17	Unidentified
í Waveform IRQ5 enabled	J21	Closed
Waveform IRQ5 disabled	J21	Open
í Monitor frequency select 31.5KHz	SW1/5	Off
Monitor frequency select 40KHz	SW1/5	On
í Factory configured - do not alter	SW1/6	On
í VGA IRQ9 disabled	SW1/7	Off
VGA IRQ9 enabled	SW1/7	On
í On board video enabled	SW1/8	On
On board video disabled	SW1/8	Off

DRAM CONFIGURATION				
Size	Bank 0	Bank 1	Bank 2	Bank 3
4MB	None	None	None	(1) 1M x 36
6MB	(1) 512K x 36	(1) 512K x 36	(1) 256K x 36	(1) 256K x 36
8MB	(1) 512K x 36	(1) 512K x 36	(1) 512K x 36	(1) 512K x 36
8MB	None	None	(1) 1M x 36	(1) 1M x 36
8MB	None	None	None	(1) 2M x 36
10MB	(1) 1M x 36	(1) 1M x 36	(1) 256K x 36	(1) 256K x 36
12MB	(1) 1M x 36	(1) 1M x 36	(1) 512K x 36	(1) 512K x 36
12MB	None	(1) 1M x 36	(1) 1M x 36	(1) 1M x 36
16MB	(1) 1M x 36	(1) 1M x 36	(1) 1M x 36	(1) 1M x 36
16MB	None	None	(1) 2M x 36	(1) 2M x 36
18MB	(1) 2M x 36	(1) 2M x 36	(1) 256K x 36	(1) 256K x 36
20MB	(1) 2M x 36	(1) 2M x 36	(1) 512K x 36	(1) 512K x 36
24MB	(1) 2M x 36	(1) 2M x 36	(1) 1M x 36	(1) 1M x 36
32MB	(1) 2M x 36	(1) 2M x 36	(1) 2M x 36	(1) 2M x 36

*Continued on next page. . .*

# TANDY/RADIO SHACK SENSATION! (250-1650)

... continued from previous page

## VIDEO MEMORY CONFIGURATION

Note: Board accepts 512KB/1MB of video memory. 512KB is factory installed and is not configurable. The size of the chips are unidentified. The number of banks is unidentified.

## VIDEO RESOLUTION SELECTION (800 x 600)

Frequency	SW1/1	SW1/2
í 56Hz	Off	Off
60Hz	Off	On
72Hz	On	Off
56Hz	On	On

## VIDEO RESOLUTION SELECTION (1024 x 768)

Frequency	SW1/3	SW1/4
í 56Hz interlaced	Off	Off
60Hz non-interlaced	Off	On