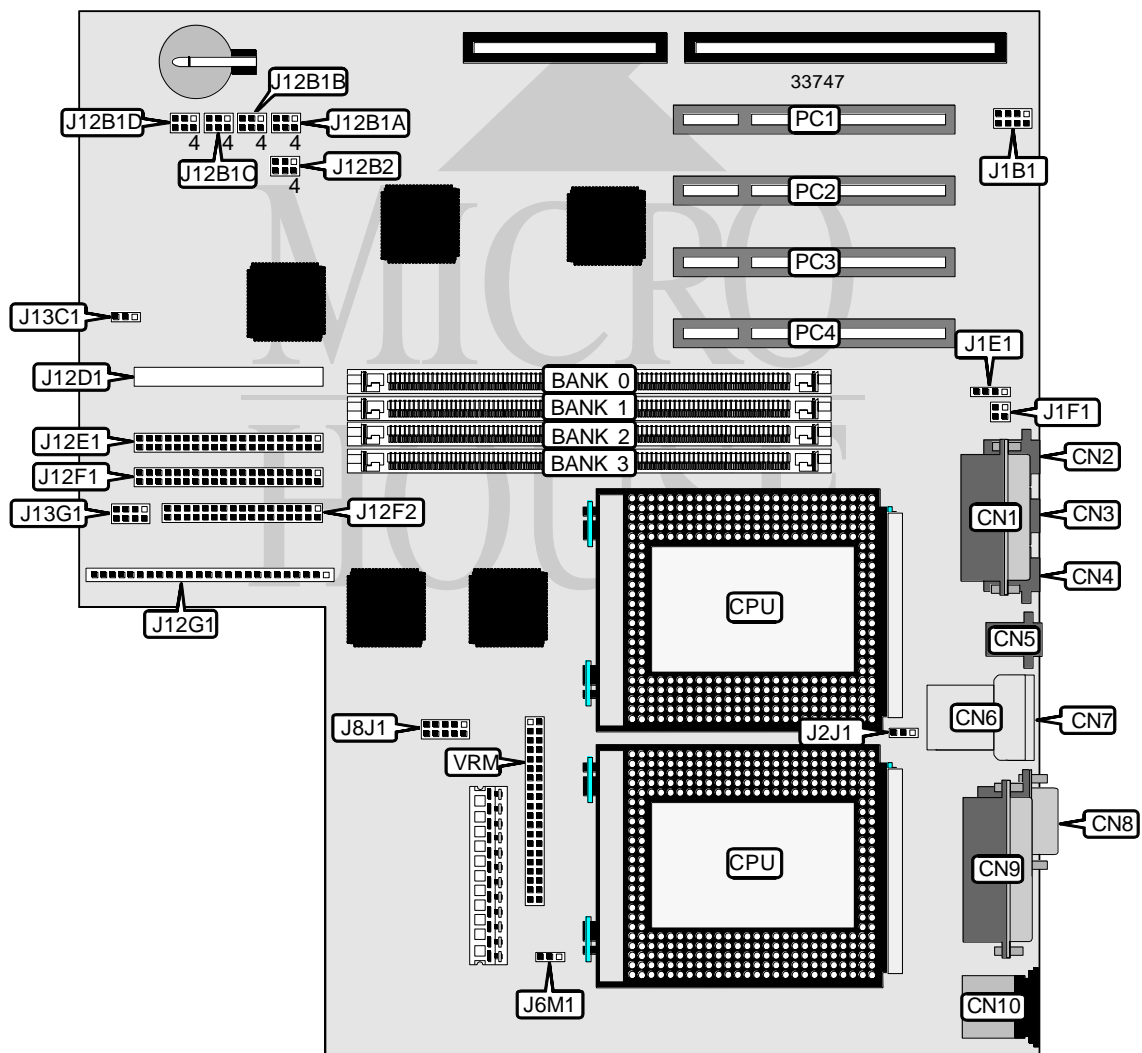


INTEL CORPORATION

P R 4 4 0 F X

Processor	Pentium Pro
Processor Speed	200MHz
Chip Set	Intel
Video Chip Set	None
Maximum Onboard Memory	512MB (EDO supported)
Maximum Video Memory	None
Cache	256/512KB (located on Pentium Pro CPU)
BIOS	Intel
Dimensions	288mm x 282mm
I/O Options	32-bit PCI slots (4), CD-ROM interface, Ethernet 10BaseT connector, floppy drive interface, green PC connector, IDE interfaces (2), SCSI interface, parallel port, PS/2 mouse port, serial ports (2), IR connector, VRM connector, USB connectors (2), telephony connector, wavetable connector, audio out connector, microphone in connector, MIDI/game port, audio in connector, soft off power supply, card slot fan
NPU Options	None



Continued on next page. . .

INTEL CORPORATION

PR440FX

... continued from previous page

CONNECTIONS			
Purpose	Location	Purpose	Location
MIDI/ game port	CN1	SCSI interface	J12D1
Microphone in connector	CN2	IDE interface 1	J12E1
Audio in connector	CN3	IDE interface 2	J12F1
Audio out connector	CN4	Floppy drive interface	J12F2
Ethernet 10BaseT connector	CN5	Front panel power switch	J12G1 pins 1 & 2
USB connector	CN6	Green PC connector	J12G1 pins 3 & 4
USB connector	CN7	IR connector	J12G1 pins 6 - 11
Serial port 1	CN8	IDE interface LED	J12G1 pins 13 - 16
Parallel port	CN9	Power LED	J12G1 pins 18 - 20
PS/2 mouse port	CN10	Reset switch	J12G1 pins 22 - 23
Wavetable connector	J1B1	Speaker	J12G1 pins 24 - 27
CD-ROM connector	J1E1	Card slot fan	J13C1
Telephony connector	J1F1	SCSI front panel LED connector	J13G1
Chassis fan power 2	J2J1	32-bit PCI slots	PC1 - PC4
Chassis fan power 1	J6M1	VRM connector	VRM
Serial port 2	J8J1		

USER CONFIGURABLE SETTINGS		
Function	Label	Position
í Setup access enabled	J12B1A	Pins 2 & 3 closed
Setup access disabled	J12B1A	Pins 1 & 2 closed
í Flash BIOS normal operation	J12B1A	Pins 5 & 6 closed
Flash BIOS recovery mode	J12B1A	Pins 4 & 5 closed
í CMOS memory normal operation	J12B1B	Pins 2 & 3 closed
CMOS memory clear	J12B1B	Pins 1 & 2 closed
í Password enabled	J12B1B	Pins 5 & 6 closed
Password disabled	J12B1B	Pins 4 & 5 closed

DIMM CONFIGURATION				
Size	Bank 0	Bank 1	Bank 2	Bank 3
16MB	(1) 2M x 64	None	None	None
32MB	(1) 2M x 64	(1) 2M x 64	None	None
32MB	(1) 4M x 64	None	None	None
48MB	(1) 2M x 64	(1) 2M x 64	(1) 2M x 64	None
64MB	(1) 2M x 64	(1) 2M x 64	(1) 2M x 64	(1) 2M x 64
64MB	(1) 4M x 64	(1) 4M x 64	None	None
64MB	(1) 8M x 64	None	None	None
96MB	(1) 4M x 64	(1) 4M x 64	(1) 4M x 64	None
128MB	(1) 4M x 64	(1) 4M x 64	(1) 4M x 64	(1) 4M x 64
128MB	(1) 8M x 64	(1) 8M x 64	None	None
128MB	(1) 16M x 64	None	None	None
192MB	(1) 8M x 64	(1) 8M x 64	(1) 8M x 64	None

Continued on next page...

INTEL CORPORATION
PR440FX

... continued from previous page

DIMM CONFIGURATION (CON'T)				
Size	Bank 0	Bank 1	Bank 2	Bank 3
256MB	(1) 8M x 64	(1) 8M x 64	(1) 8M x 64	(1) 8M x 64
256MB	(1) 16M x 64	(1) 16M x 64	None	None
384MB	(1) 16M x 64	(1) 16M x 64	(1) 16M x 64	None
512MB	(1) 16M x 64	(1) 16M x 64	(1) 16M x 64	(1) 16M x 64
Note: Board accepts EDO memory.				

DIMM SPEED CONFIGURATION	
Speed	J12B2
60ns	Pins 2 & 3 closed
50ns	Pins 1 & 2 closed

CACHE CONFIGURATION
Note: 256KB or 512KB cache is located on the Pentium Pro CPU.

CPU SPEED SELECTION				
CPU speed	Clock speed	Multiplier	J12B1C	J12B1D
200MHz	66MHz	3x	2 & 3, 5 & 6	2 & 3, 5 & 6
Note: Pins designated should be in the closed position.				