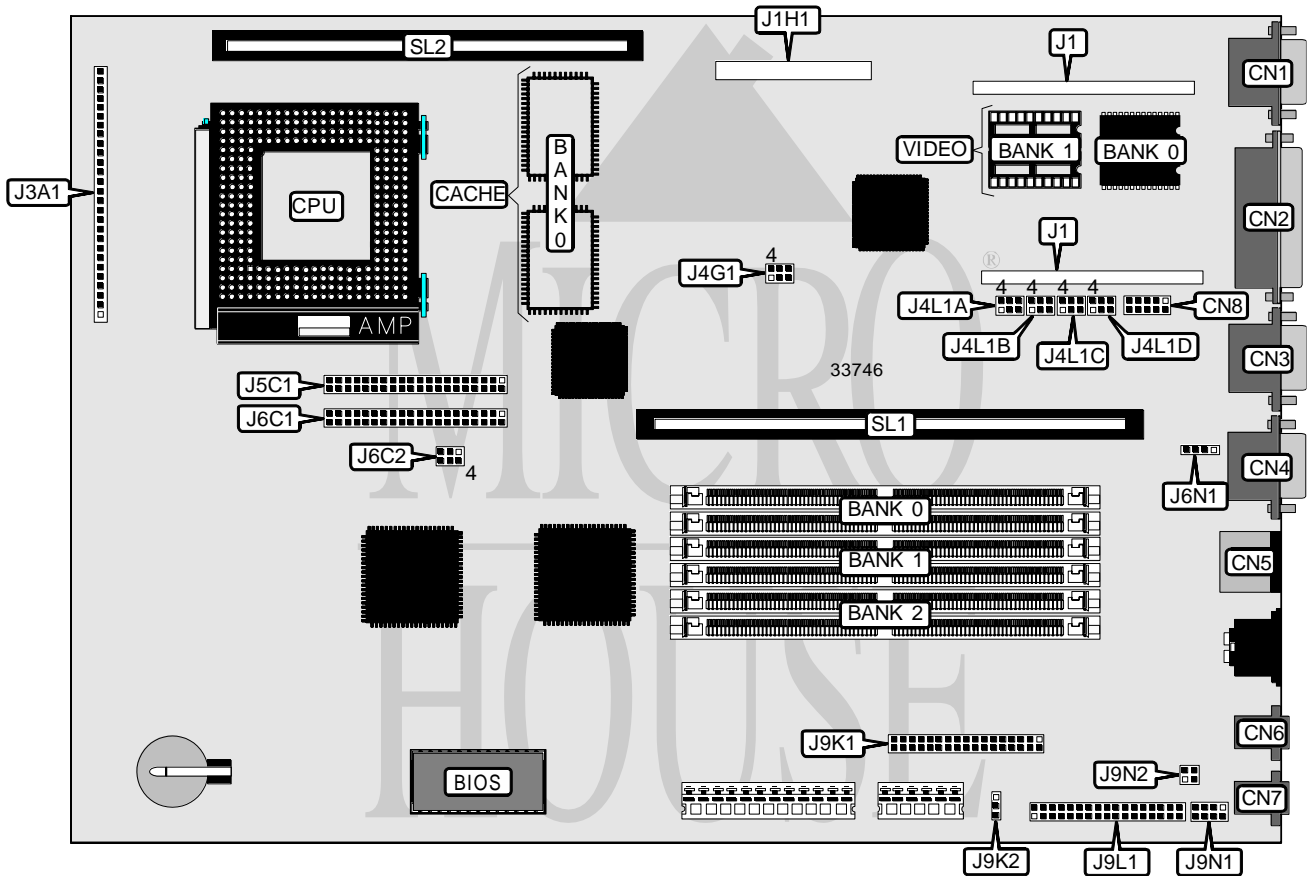


INTEL CORPORATION ADVANCED/RH LPX

Processor	Pentium
Processor Speed	75/90/100/120/133/150/166MHz
Chip Set	Intel
Video Chip Set	ATI
Maximum Onboard Memory	512MB (EDO supported)
Maximum Video Memory	4MB
Cache	256/512KB
BIOS	Intel
Dimensions	330mm x 228mm
I/O Options	CD-ROM interface, floppy drive interface, green PC connector, IDE interfaces (2), parallel port, PS/2 mouse port, serial ports (2), VGA port, riser slot, cache slot, IR connector, USB connector, telephony connector, wavetable connector, audio out connector, microphone in connector, MIDI/audio connector, ATI media connector, power supply remote connector
NPU Options	None



Continued on next page . . .

INTEL CORPORATION ADVANCED/RH LPX

... continued from previous page

CONNECTIONS			
Purpose	Location	Purpose	Location
VGA port	CN1	Front panel power switch	J3A1 pins 14 - 18
Parallel port	CN2	IR connector	J3A1 pins 19 - 25
Serial port 2/USB connector	CN3	Speaker	J3A1 pins 26 - 29
Serial port 1	CN4	IDE interface	J5C1
PS/2 mouse port	CN5	IDE interface	J6C1
Microphone in connector	CN6	CD-ROM connector	J6N1
Audio out connector	CN7	Floppy drive interface	J9K1
Serial port 2	CN8	Power supply remote connector	J9K2
ATI media connector	J1H1	MIDI/audio connector	J9L1
Chassis fan power	J3A1 pins 1 - 3	Wavetable connector	J9N1
Reset switch	J3A1 pins 4 & 5	Telephony connector	J9N2
Power LED & keylock	J3A1 pins 6 - 9	Riser slot	SL1
IDE interface LED	J3A1 pins 10 - 13	Cache slot	SL2
Note: If CN3 is a serial port, CN8 is not present.			

USER CONFIGURABLE SETTINGS		
Function	Label	Position
í CMOS memory normal operation	J4L1A	Pins 4 & 5 closed
CMOS memory clear	J4L1A	Pins 5 & 6 closed
í Password enabled	J4L1A	Pins 1 & 2 closed
Password disabled	J4L1A	Pins 2 & 3 closed
í Setup access enabled	J4L1B	Pins 1 & 2 closed
Setup access disabled	J4L1B	Pins 2 & 3 closed
í Flash BIOS normal operation	J6C2	Pins 1 & 2 closed
Flash BIOS recovery mode	J6C2	Pins 2 & 3 closed

DRAM CONFIGURATION			
Size	Bank 0	Bank 1	Bank 2
8MB	(2) 1M x 36	None	None
16MB	(2) 1M x 36	(2) 1M x 36	None
16MB	(2) 2M x 36	None	None
24MB	(2) 2M x 36	(2) 1M x 36	None
24MB	(2) 1M x 36	(2) 1M x 36	(2) 1M x 36
32MB	(2) 4M x 36	None	None
32MB	(2) 2M x 36	(2) 2M x 36	None
40MB	(2) 4M x 36	(2) 1M x 36	None
48MB	(2) 4M x 36	(2) 2M x 36	None
48MB	(2) 4M x 36	(2) 1M x 36	(2) 1M x 36
64MB	(2) 8M x 36	None	None
64MB	(2) 4M x 36	(2) 4M x 36	None
80MB	(2) 8M x 36	(2) 2M x 36	None

Continued on next page...

INTEL CORPORATION

ADVANCED/RH LPX

... continued from previous page

DRAM CONFIGURATION (CON'T)			
Size	Bank 0	Bank 1	Bank 2
80MB	(2) 8M x 36	(2) 1M x 36	(2) 1M x 36
88MB	(2) 8M x 36	(2) 2M x 36	(2) 1M x 36
96MB	(2) 8M x 36	(2) 4M x 36	None
96MB	(2) 4M x 36	(2) 4M x 36	(2) 4M x 36
96MB	(2) 8M x 36	(2) 2M x 36	(2) 2M x 36
128MB	(2) 8M x 36	(2) 4M x 36	(2) 4M x 36
128MB	(2) 16M x 36	None	None
128MB	(2) 8M x 36	(2) 8M x 36	None
136MB	(2) 16M x 36	(2) 1M x 36	None
144MB	(2) 16M x 36	(2) 2M x 36	None
144MB	(2) 16M x 36	(2) 1M x 36	(2) 1M x 36
152MB	(2) 16M x 36	(2) 2M x 36	(2) 1M x 36
160MB	(2) 16M x 36	(2) 4M x 36	None
160MB	(2) 16M x 36	(2) 2M x 36	(2) 2M x 36
176MB	(2) 16M x 36	(2) 4M x 36	(2) 2M x 36
192MB	(2) 16M x 36	(2) 8M x 36	None
192MB	(2) 16M x 36	(2) 4M x 36	(2) 4M x 36
200MB	(2) 16M x 36	(2) 8M x 36	(2) 1M x 36
208MB	(2) 16M x 36	(2) 8M x 36	(2) 2M x 36
224MB	(2) 16M x 36	(2) 8M x 36	(2) 4M x 36
256MB	(2) 32M x 36	None	None
256MB	(2) 16M x 36	(2) 16M x 36	None
256MB	(2) 16M x 36	(2) 8M x 36	(2) 8M x 36
264MB	(2) 16M x 36	(2) 16M x 36	(2) 1M x 36
272MB	(2) 32M x 36	(2) 1M x 36	(2) 1M x 36
272MB	(2) 16M x 36	(2) 16M x 36	(2) 2M x 36
288MB	(2) 32M x 36	(2) 2M x 36	(2) 2M x 36
288MB	(2) 16M x 36	(2) 16M x 36	(2) 4M x 36
320MB	(2) 32M x 36	(2) 4M x 36	(2) 4M x 36
320MB	(2) 16M x 36	(2) 16M x 36	(2) 8M x 36
384MB	(2) 32M x 36	(2) 8M x 36	(2) 8M x 36
384MB	(2) 16M x 36	(2) 16M x 36	(2) 16M x 36
512MB	(2) 32M x 36	(2) 32M x 36	None

Note: Board accepts EDO memory. Board also accepts x 32 SIMMs. Banks are interchangeable.

CACHE CONFIGURATION		
Size	Bank 0	SL1
256KB	(2) 32K x 32	Not installed
256KB	None	256KB module installed
512KB	(4) 64K x 8	512KB module installed

Note: Either Bank 0 or SL1 will be installed on this board.

Continued on next page. . .

**INTEL CORPORATION
ADVANCED/RH LPX**

... continued from previous page

VIDEO MEMORY CONFIGURATION			
Size	Bank 0	Bank 1	J1
1MB	1MB	None	Not installed
2MB	1MB	(2) 256K x 16	Not installed
4MB	1MB	(2) 256K x 16	2MB module installed

Note: Bank 0 is factory installed and is not configurable. There are 2 sockets for J1.

CPU SPEED SELECTION				
CPU speed	Clock speed	Multiplier	J4L1C	J4L1D
75MHz	50MHz	1.5x	2 & 3, 5 & 6	1 & 2, 4 & 5
90MHz	60MHz	1.5x	2 & 3, 4 & 5	1 & 2, 4 & 5
100MHz	66MHz	1.5x	1 & 2, 5 & 6	1 & 2, 4 & 5
120MHz	60MHz	2x	2 & 3, 4 & 5	2 & 3, 4 & 5
133MHz	66MHz	2x	1 & 2, 5 & 6	2 & 3, 4 & 5
150MHz	60MHz	2.5x	2 & 3, 4 & 5	2 & 3, 5 & 6
166MHz	66MHz	2.5x	1 & 2, 5 & 6	2 & 3, 5 & 6

Note: Pins designated should be in the closed position.

CPU TYPE SELECTION	
Type	J6C2
í VRE	Pins 5 & 6 closed
VR	Pins 4 & 5 closed

PCI SLOT SELECTION	
Setting	J4G1
í Riser card with 2 slots	Pins 1 & 2, 4 & 5 closed
Riser card with 3 slots	Pins 2 & 3, 5 & 6 closed