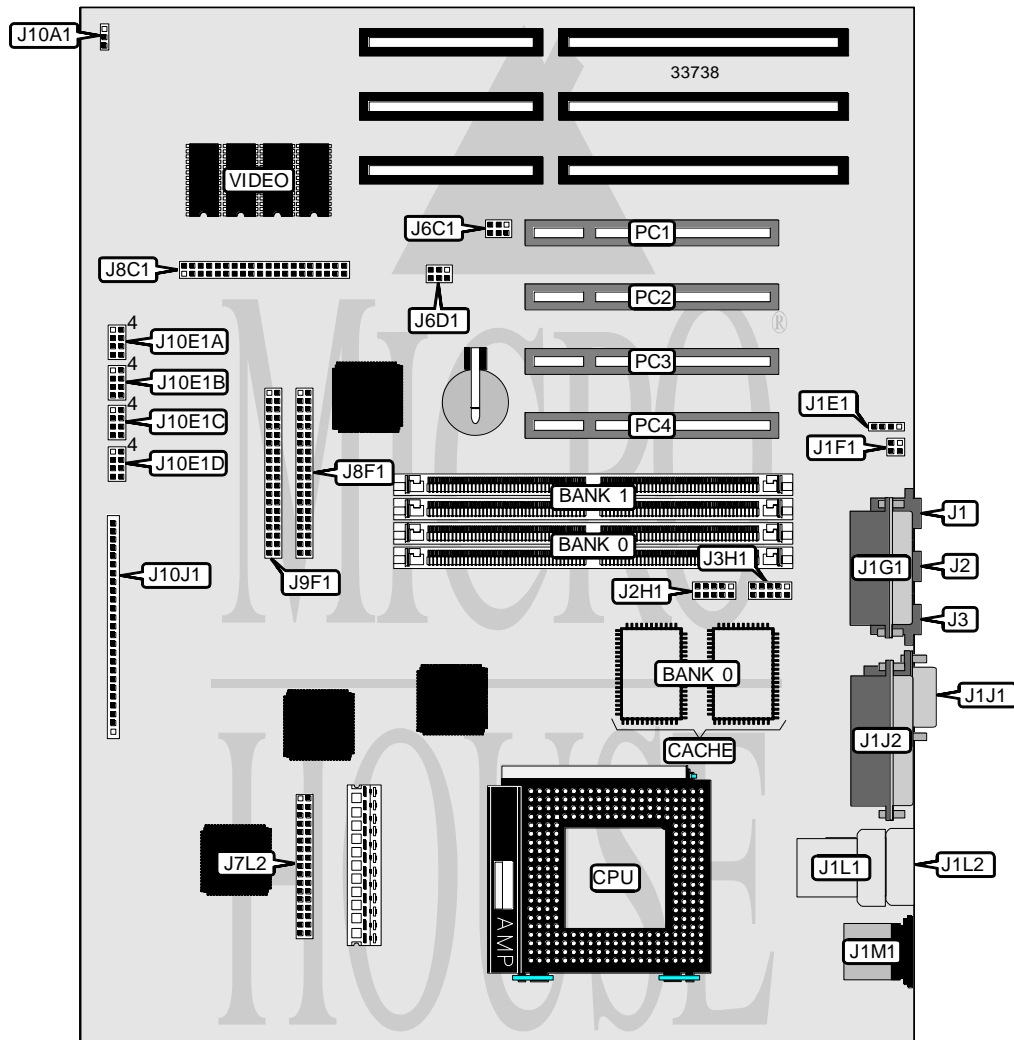


INTEL CORPORATION AG430HX

Processor	Pentium
Processor Speed	75/90/100/120/133/150/166/200MHz
Chip Set	Intel
Video Chip Set	ATI
Maximum Onboard Memory	128MB (EDO supported)
Maximum Video Memory	2MB
Cache	256KB
BIOS	Intel
Dimensions	304mm x 243mm
I/O Options	32-bit PCI slots (4), floppy drive interface, green PC connector, IDE interfaces (2), parallel port, PS/2 mouse port, serial ports (2), VESA feature connector, VGA port, IR connector, USB connectors (2), soft off power supply, wavetable connectors (2), telephony connector, audio out connector, microphone in connector, audio in connector, MIDI/game port, CD-ROM connector
NPU Options	None



Continued on next page . . .

INTEL CORPORATION

AG430HX

... continued from previous page

CONNECTIONS			
Purpose	Location	Purpose	Location
Microphone in connector	J1	Wavetable connector	J6D1
Audio in connector	J2	Floppy drive interface	J7L2
Audio out connector	J3	VESA feature connector	J8C1
CD-ROM connector	J1E1	IDE interface 2	J8F1
Telephony connector	J1F1	IDE interface 1	J9F1
MIDI/game port	J1G1	Chassis fan power	J10A1
VGA port	J1J1	Front panel power switch	J10J1 pins 1 & 2
Parallel port	J1J2	Green PC connector	J10J1 pins 3 & 4
USB connector	J1L1	IR connector	J10J1 pins 6 - 11
USB connector	J1L2	IDE interface LED	J10J1 pins 13 - 16
PS/2 mouse port	J1M1	Green PC LED	J10J1 pins 18 - 21
Serial port 1	J2H1	Reset switch	J10J1 pins 22 & 23
Serial port 2	J3H1	Speaker	J10J1 pins 24 - 27
Wavetable connector	J6C1	32-bit PCI slots	PC1 - PC4

USER CONFIGURABLE SETTINGS		
Function	Label	Position
í Password enabled	J10E1A	Pins 1 & 2 closed
Password disabled	J10E1A	Pins 2 & 3 closed
í CMOS memory normal operation	J10E1A	Pins 4 & 5 closed
CMOS memory clear	J10E1A	Pins 5 & 6 closed
í Setup access enabled	J10E1B	Pins 1 & 2 closed
Setup access disabled	J10E1B	Pins 2 & 3 closed
í Flash BIOS normal operation	J10E1B	Pins 4 & 5 closed
Flash BIOS recovery mode	J10E1B	Pins 5 & 6 closed

DRAM CONFIGURATION		
Size	Bank 0	Bank 1
8MB	(2) 1M x 32	None
16MB	(2) 2M x 32	None
16MB	(2) 1M x 32	(2) 1M x 32
24MB	(2) 2M x 32	(2) 1M x 32
24MB	(2) 1M x 32	(2) 2M x 32
32MB	(2) 4M x 32	None
32MB	(2) 2M x 32	(2) 2M x 32
40MB	(2) 4M x 32	(2) 1M x 32
40MB	(2) 1M x 32	(2) 4M x 32
48MB	(2) 4M x 32	(2) 2M x 32
48MB	(2) 2M x 32	(2) 4M x 32
64MB	(2) 8M x 32	None
64MB	(2) 4M x 32	(2) 4M x 32
72MB	(2) 8M x 32	(2) 1M x 32

Continued on next page...

INTEL CORPORATION

AG430HX

... continued from previous page

DRAM CONFIGURATION (CON'T)		
Size	Bank 0	Bank 1
72MB	(2) 1M x 32	(2) 8M x 32
80MB	(2) 8M x 32	(2) 2M x 32
80MB	(2) 2M x 32	(2) 8M x 32
96MB	(2) 8M x 32	(2) 4M x 32
96MB	(2) 4M x 32	(2) 8M x 32
128MB	(2) 8M x 32	(2) 8M x 32

Note: Board accepts EDO memory. Board also accepts x 36 SIMMs. Banks are interchangeable.

CACHE CONFIGURATION
Note: 256KB cache is factory installed and is not configurable.

VIDEO MEMORY CONFIGURATION
Note: 2MB video memory is factory installed and is not configurable.

CPU SPEED SELECTION				
CPU speed	Clock speed	Multiplier	J10E1C	J10E1D
75MHz	50MHz	1.5x	2 & 3, 5 & 6	1 & 2, 4 & 5
90MHz	60MHz	1.5x	2 & 3, 4 & 5	1 & 2, 4 & 5
100MHz	66MHz	1.5x	1 & 2, 5 & 6	1 & 2, 4 & 5
120MHz	60MHz	2x	2 & 3, 4 & 5	2 & 3, 4 & 5
133MHz	66MHz	2x	1 & 2, 5 & 6	2 & 3, 4 & 5
150MHz	60MHz	2.5x	2 & 3, 4 & 5	2 & 3, 5 & 6
166MHz	66MHz	2.5x	1 & 2, 5 & 6	2 & 3, 5 & 6
200MHz	66MHz	3x	1 & 2, 5 & 6	1 & 2, 5 & 6

Note: Pins designated should be in the closed position.