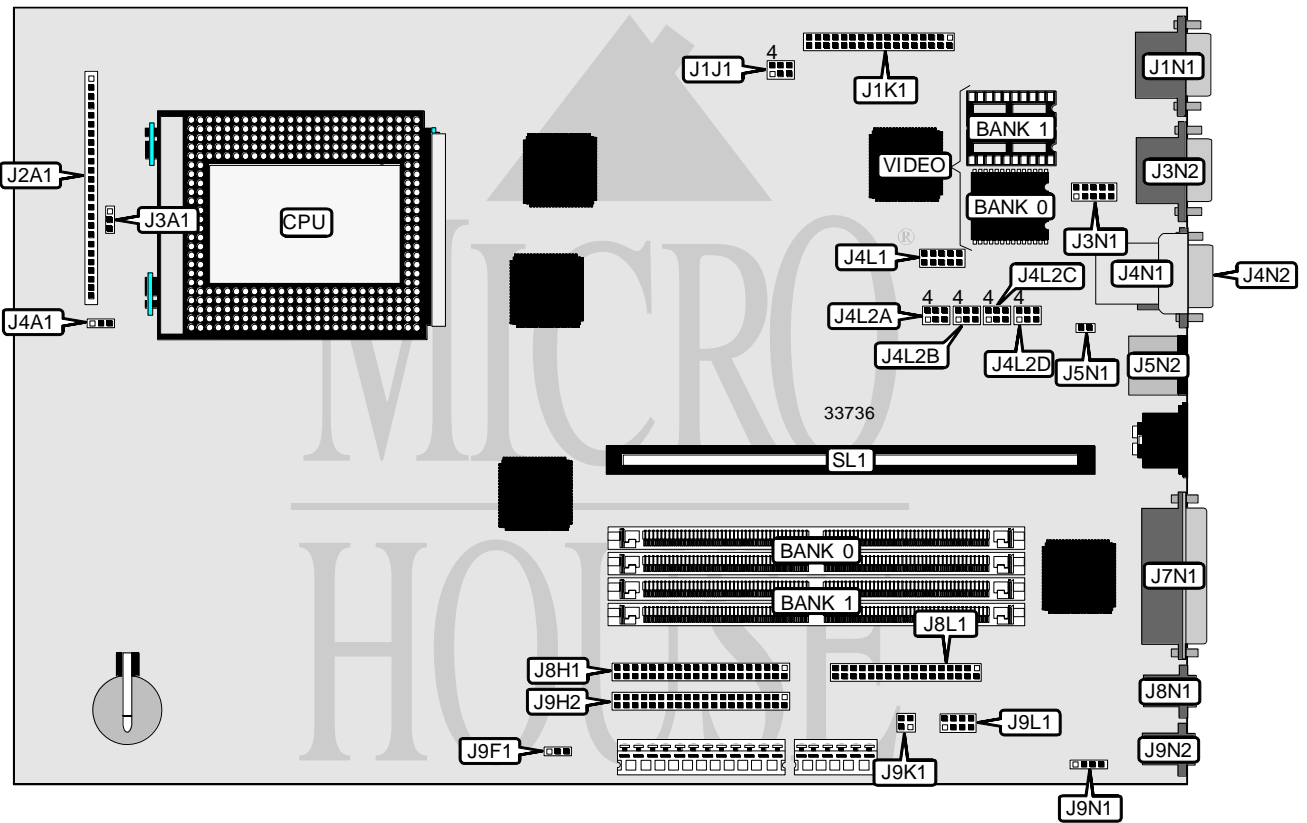


# INTEL CORPORATION A P 4 4 0 F X

<b>Processor</b>	Pentium Pro
<b>Processor Speed</b>	150/166/180/200MHz
<b>Chip Set</b>	Intel
<b>Video Chip Set</b>	S3
<b>Maximum Onboard Memory</b>	128MB (EDO supported)
<b>Maximum Video Memory</b>	2MB
<b>Cache</b>	256/512KB (located on the Pentium Pro CPU)
<b>BIOS</b>	Intel
<b>Dimensions</b>	330mm x 228mm
<b>I/O Options</b>	CD-ROM interface, floppy drive interface, green PC connector, IDE interfaces (2), parallel port, PS/2 mouse port, serial ports (2), VESA feature connector, VGA port, riser slot, IR connectors (2), USB connector, soft off power supply, wavetable interface, telephony interface, audio out connector, microphone in connector
<b>NPU Options</b>	None



*Continued on next page . . .*

# INTEL CORPORATION

## AP440FX

... continued from previous page

CONNECTIONS			
Purpose	Location	Purpose	Location
VESA feature connector	J1K1	USB connector	J4N1
VGA port	J1N1	Serial port/USB connector	J4N2
Front panel power switch	J2A1 pins 1 & 2	PS/2 mouse port	J5N2
Green PC connector	J2A1 pins 3 & 4	Parallel port	J7N1
IR connector	J2A1 pins 6 - 11	IDE interface 1	J8H1
IDE interface LED	J2A1 pins 13 - 16	Floppy drive interface	J8L1
Power LED	J2A1 pins 18 - 20	Microphone in connector	J8N1
Reset switch	J2A1 pins 22 - 23	Soft off power supply	J9F1
Speaker	J2A1 pins 24 - 27	IDE interface 2	J9H2
Keylock	J3A1	Telephony interface	J9K1
Serial port 2	J3N1	Wavetable interface	J9L1
Serial port 1	J3N2	CD-ROM connector	J9N1
Chassis fan power	J4A1	Audio out connector	J9N2
IR connector	J4L1	Riser slot	SL1

Note: Depending on board version, either USB connectors or serial port will be installed.

USER CONFIGURABLE SETTINGS		
Function	Label	Position
í Flash BIOS write protect disabled	J4L2B	Pins 5 & 6 closed
Flash BIOS write protect enabled	J4L2B	Pins 4 & 5 closed
í Flash BIOS normal operation	J4L2C	Pins 2 & 3 closed
Flash BIOS recovery mode	J4L2C	Pins 1 & 2 closed
í CMOS memory normal operation	J4L2C	Pins 5 & 6 closed
CMOS memory clear	J4L2C	Pins 4 & 5 closed
Password enabled	J4L2D	Pins 1 & 2 closed
Password disabled	J4L2D	Pins 2 & 3 closed
Setup access enabled	J4L2D	Pins 5 & 6 closed
Setup access disabled	J4L2D	Pins 4 & 5 closed

DRAM CONFIGURATION		
Size	Bank 0	Bank 1
8MB	(2) 1M x 36	None
16MB	(2) 2M x 36	None
16MB	(2) 1M x 36	(2) 1M x 36
24MB	(2) 2M x 36	(2) 1M x 36
24MB	(2) 1M x 36	(2) 2M x 36
32MB	(2) 4M x 36	None
32MB	(2) 2M x 36	(2) 2M x 36
40MB	(2) 4M x 36	(2) 1M x 36
40MB	(2) 1M x 36	(2) 4M x 36
48MB	(2) 4M x 36	(2) 2M x 36
48MB	(2) 2M x 36	(2) 4M x 36

Continued on next page...

# INTEL CORPORATION

## AP440FX

... continued from previous page

DRAM CONFIGURATION (CON'T)		
Size	Bank 0	Bank 1
64MB	(2) 8M x 36	None
64MB	(2) 4M x 36	(2) 4M x 36
72MB	(2) 8M x 36	(2) 1M x 36
72MB	(2) 1M x 36	(2) 8M x 36
80MB	(2) 8M x 36	(2) 2M x 36
80MB	(2) 2M x 36	(2) 8M x 36
96MB	(2) 8M x 36	(2) 4M x 36
96MB	(2) 4M x 36	(2) 8M x 36
128MB	(2) 8M x 36	(2) 8M x 36

Note: Board accepts EDO memory. Board also accepts x 32 SIMMs. Banks are interchangeable.

CACHE CONFIGURATION
Note: 256KB or 512KB cache is located on the Pentium Pro CPU.

VIDEO MEMORY CONFIGURATION		
Size	Bank 0	Bank 1
1MB	1MB	None
2MB	1MB	(2) 256K x 16

Note: Bank 0 is factory installed and is not configurable.

CPU SPEED SELECTION				
CPU speed	Clock speed	Multiplier	J4L2A	J4L2B
150MHz	60MHz	2.5x	1 & 2, 4 & 5	1 & 2
166MHz	66MHz	2.5x	1 & 2, 4 & 5	2 & 3
180MHz	60MHz	3x	2 & 3, 5 & 6	1 & 2
200MHz	66MHz	3x	2 & 3, 5 & 6	2 & 3

Note: Pins designated should be in the closed position.

PCI SLOT SELECTION	
Setting	J1J1
Riser card with 2 PCI slots	Pins 1 & 2, 4 & 5 closed
Riser card with 3 PCI slots	Pins 2 & 3, 5 & 6 closed