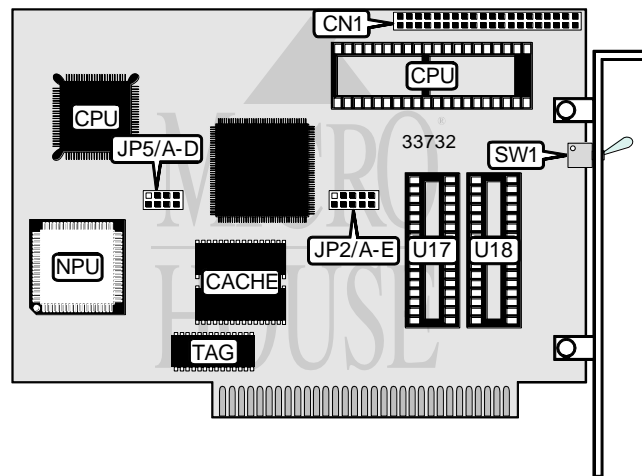


SOTA TECHNOLOGY, INC.

SOTA386SI

Card Type	Processor upgrade
Processor	8088/8086/80386SX
Processor Speed	16MHz
Chipset	N/A
Maximum Onboard Memory	None
Data Bus	8-bit ISA
Cache	16/64KB
BIOS	N/A
Dimensions	170 x 110mm
I/O Options	None
NPU Options	80387SX



CONNECTIONS	
Function	Label
Ribbon cable to mainboard 808x socket	CN1

USER CONFIGURABLE SETTINGS		
Function	Label	Position
í Factory configured - do not alter	JP5/A	Closed
í NPU not installed	JP5/B	Open
í NPU installed	JP5/B	Closed
í Factory configured - do not alter	JP5/C	Open
í Factory configured - do not alter	JP5/D	Open
í Use 80386SX processor	SW1	Off
í Fall back to 808x processor	SW1	On

CACHE CONFIGURATION		
Setting	Bank 0	TAG
16KB	(2) 8K x 8	Unidentified
64KB	(2) 32K x 8	(1) 32K x 8

Continued on next page. . .

SOTA TECHNOLOGY, INC.
S O T A 3 8 6 S I

... continued from previous page

CACHE JUMPER CONFIGURATION	
Setting	JP2/E
í 16KB	Open
64KB	Closed

MAINBOARD PROCESSOR TYPE				
Setting	JP2/C	JP2/D	U17	U18
í 8088	Open	Open	74LS646	Not installed
Standard 8086	Closed	Closed	Not installed	74LS646
AT&T 6300, Olivetti 8086	Open	Open	Not installed	74LS646

CACHE ENABLE CONFIGURATION		
Setting	JP2/A	JP2/B
í Cache enabled by software only	Open	Closed
Cache enabled 5 seconds after power-up	Closed	Open
Cache enabled 50 seconds after power-up	Open	Open

MISCELLANEOUS TECHNICAL NOTE

The mainboard's 808x chip should be installed in the card's 808x-type socket. A ribbon cable from CN1 then is installed in the mainboard's 808x socket.