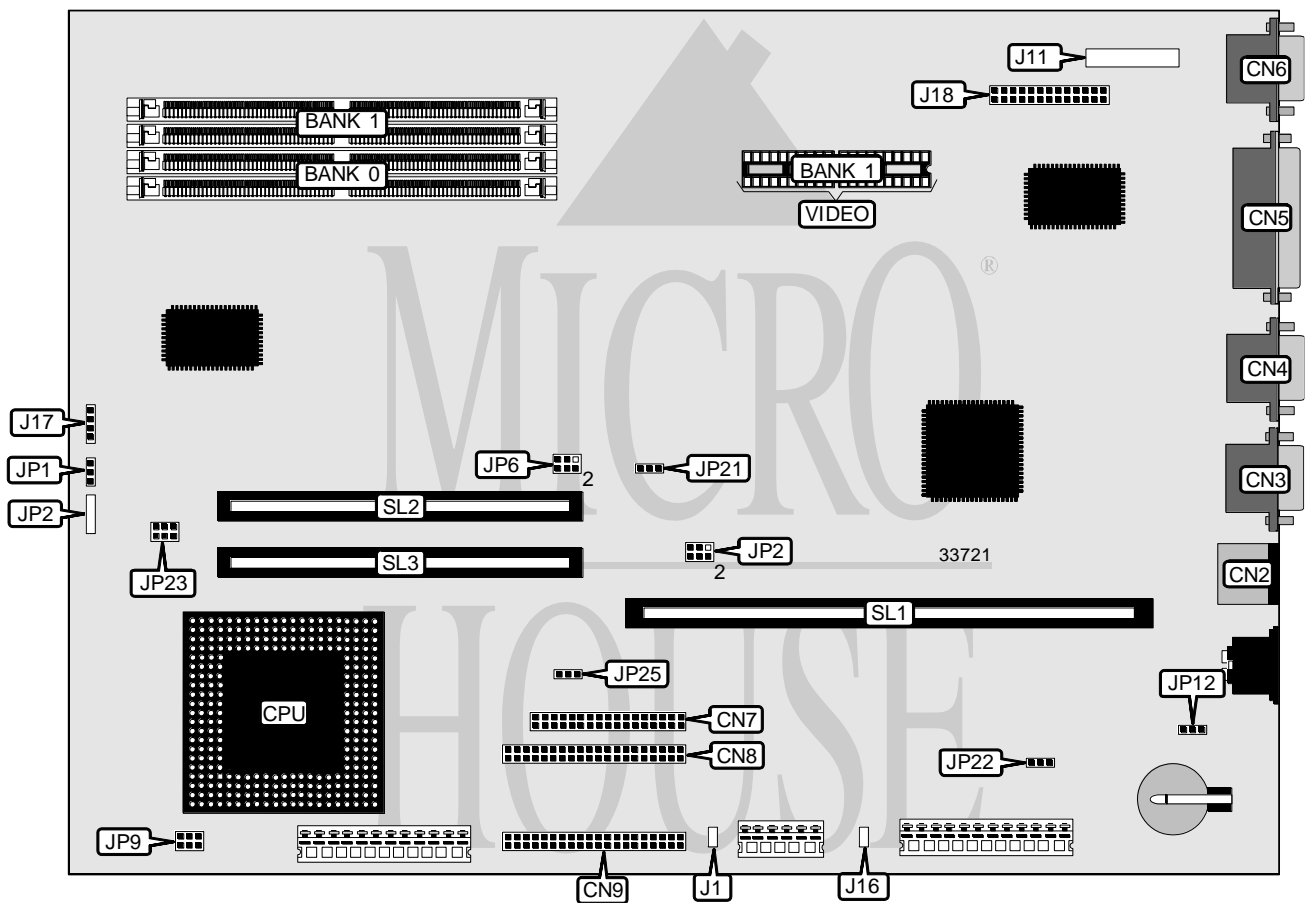


IBM CORPORATION

APTIVA M30 (250-0441), APTIVA M31 (250-0441),
 APTIVA M40 (12-10609), APTIVA M41 (250-0442),
 APTIVA M50 (250-0440), APTIVA M53 (250-0443),
 APTIVA M71 (250-0444)

Processor	CX M1/Pentium
Processor Speed	75/100/133MHz
Chip Set	VLSI
Video Chip Set	Trident
Maximum Onboard Memory	128MB (EDO supported)
Maximum Video Memory	2MB
Cache	256/512KB
BIOS	Unidentified
Dimensions	330mm x 218mm
I/O Options	Floppy drive interface, IDE interfaces (2), parallel port, PS/2 mouse port, serial ports (2), VESA feature connector, VGA port, riser slot, cache slots (2), internal VGA connector, power switch connector, wake up on ring connector
NPU Options	None



Continued on next page...

IBM CORPORATION

APTIVA M30 (250-0441), APTIVA M31 (250-0441),
 APTIVA M40 (12-10609), APTIVA M41 (250-0442),
 APTIVA M50 (250-0440), APTIVA M53 (250-0443),
 APTIVA M71 (250-0444)

... continued from previous page

CONNECTIONS			
Purpose	Location	Purpose	Location
PS/2 mouse port	CN2	Internal VGA connector	J11
Serial port 2	CN3	Power switch connector	J16
Serial port 1	CN4	IDE interface LED	J17
Parallel port	CN5	VESA feature connector	J18
VGA port	CN6	Speaker	JP1
Floppy drive interface	CN7	Chassis fan power	JP2
IDE interface 2	CN8	Riser slot	SL1
IDE interface 1	CN9	Cache slots	SL2 & SL3
Wake up on ring connector	J1		

USER CONFIGURABLE SETTINGS		
Function	Label	Position
í Factory configured - do not alter	JP2	Unidentified
í CMOS memory normal operation	JP12	Pins 1 & 2 closed
CMOS memory clear	JP12	Pins 2 & 3 closed
Floppy drive write enabled	JP22	Pins 1 & 2 closed
Floppy drive write disabled	JP22	Pins 2 & 3 closed

DRAM CONFIGURATION		
Size	Bank 0	Bank 1
8MB	(2) 1M x 36	None
16MB	(2) 2M x 36	None
16MB	(2) 1M x 36	(2) 1M x 36
24MB	(2) 1M x 36	(2) 2M x 36
32MB	(2) 4M x 36	None
32MB	(2) 2M x 36	(2) 2M x 36
40MB	(2) 1M x 36	(2) 4M x 36
48MB	(2) 4M x 36	(2) 2M x 36
64MB	(2) 8M x 36	None
64MB	(2) 4M x 36	(2) 4M x 36
72MB	(2) 1M x 36	(2) 8M x 36
80MB	(2) 8M x 36	(2) 2M x 36
96MB	(2) 4M x 36	(2) 8M x 36
128MB	(2) 8M x 36	(2) 8M x 36

Note: Board accepts EDO memory. Board also accepts x 32 SIMMs. Banks are interchangeable.

Continued on next page...

IBM CORPORATION

APTIVA M30 (250-0441), APTIVA M31 (250-0441),
 APTIVA M40 (12-10609), APTIVA M41 (250-0442),
 APTIVA M50 (250-0440), APTIVA M53 (250-0443),
 APTIVA M71 (250-0444)

... continued from previous page

CACHE CONFIGURATION			
Size	SL2	SL3	TAG
256KB	256KB module installed	Not installed	(1) 32K x 8
512KB	256KB module installed	256KB module installed	(1) 32K x 8

Note: The location of the TAG is unidentified.

CACHE JUMPER CONFIGURATION	
Size	JP6
None	Pins 1 & 3, 2 & 4 closed
256KB	Pins 1 & 3, 2 & 4 closed
512KB	Pins 3 & 5, 4 & 6 closed

VIDEO MEMORY CONFIGURATION		
Size	Bank 0	Bank 1
1MB	1MB	None
2MB	1MB	1MB

Note: The location of bank 0 is unidentified. The size of the memory chips are unidentified.

CPU SPEED SELECTION		
CPU	Speed	JP23
CX M1	3/1	Pins 4 & 6 closed
CX M1	2/1	Pins 2 & 4 closed
P54	3/2	Open
P54	2/1	Pins 2 & 4 closed
P54C	-	Pins 1 & 3 closed
P55C	-	Pins 3 & 5 closed
ASM M1	-	Open

CPU MULTIPLIER SELECTION	
Multiplier	JP25
2x	Pins 1 & 2 closed
2.5x	Pins 2 & 3 closed

CPU TYPE SELECTION	
Type	JP9
CX M1	Pins 2 & 3 closed
P54C	Pins 1 & 2 closed
P55C	N/A

Continued on next page...

IBM CORPORATION

APTIVA M30 (250-0441), APTIVA M31 (250-0441),
APTIVA M40 (12-10609), APTIVA M41 (250-0442),
APTIVA M50 (250-0440), APTIVA M53 (250-0443),
APTIVA M71 (250-0444)

... continued from previous page

CPU VOLTAGE SELECTION	
Voltage	JP21
3.3v	Pins 2 & 3 closed
5v	Pins 1 & 2 closed