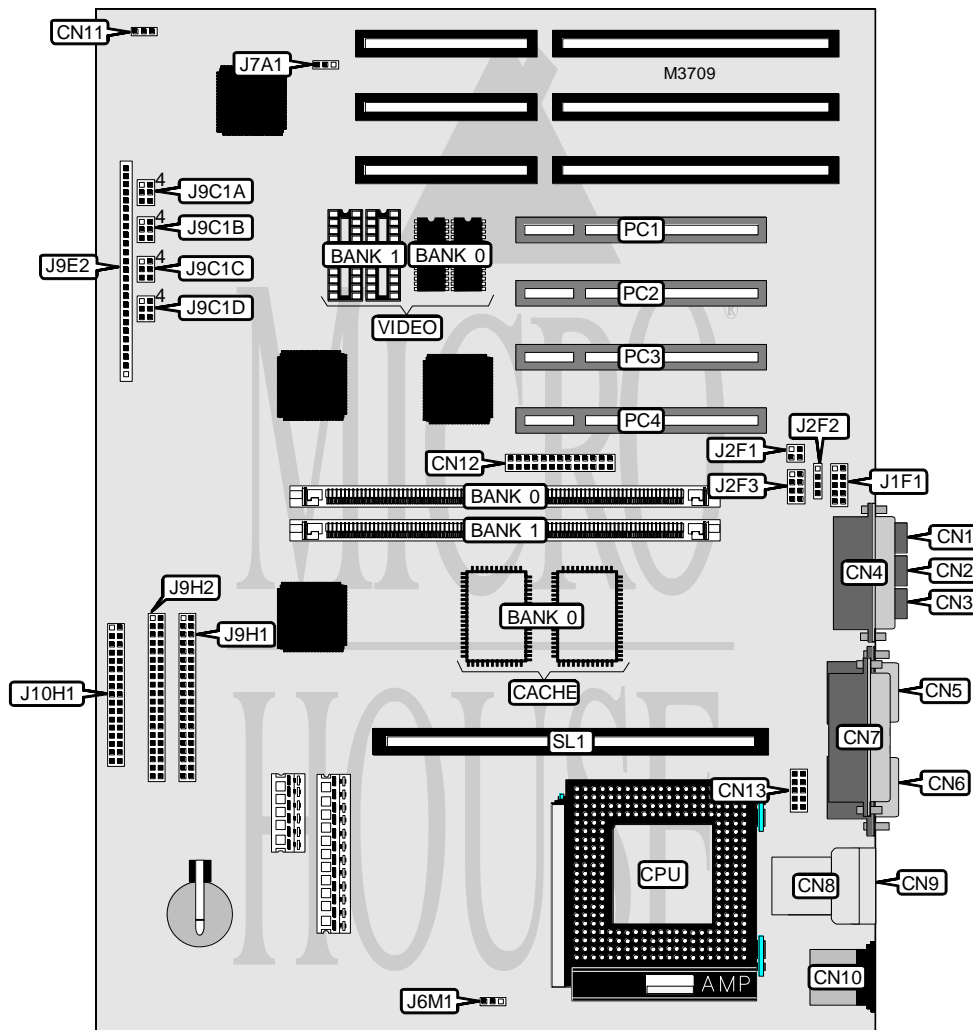


INTEL CORPORATION T E 4 3 0 V X

Processor	Pentium
Processor Speed	75/90/100/120/133/150/166/200MHz
Chip Set	Intel
Video Chip Set	S3
Maximum Onboard Memory	128MB (EDO supported)
Maximum Video Memory	2MB
Cache	256/512KB
BIOS	AMI
Dimensions	305mm x 244mm
I/O Options	32-bit PCI slots (4), CD-ROM interface, floppy drive interface, green PC connector, IDE interfaces (2), parallel port, PS/2 mouse port, serial ports (2), VESA feature connector, VGA port, cache slot, IR connector, USB connectors (2), modem blaster connector, wave table connector, telephony connector, microphone in connector, line in connector, line out connector, MIDI/game port
NPU Options	None



Continued on next page. . .

INTEL CORPORATION

TE430VX

... continued from previous page

CONNECTIONS			
Purpose	Location	Purpose	Location
Microphone connector	CN1	CD-ROM connector	J2F2
Line in connector	CN2	Wave table connector	J2F3
Line out connector	CN3	Power on connector	J9E2 pins 1 & 2
MIDI/game port	CN4	Green PC connector	J9E2 pins 3 & 4
VGA port	CN5	IR connector	J9E2 pins 6 - 11
Serial port 1	CN6	IDE interface LED	J9E2 pins 13 - 16
Parallel port	CN7	Green PC LED	J9E2 pins 18 - 21
USB connector	CN8	Reset switch	J9E2 pins 22 & 23
USB connector	CN9	Speaker	J9E2 pins 24 - 27
PS/2 mouse port	CN10	IDE interface 1	J9H1
Chassis fan power	CN11	IDE interface 2	J9H2
VESA feature connector	CN12	Floppy drive interface	J10H1
Serial port 2	CN13	32-bit PCI slots	PC1 - PC4
Modem blaster connector	J1F1	Cache slot	SL1
Telephony connector	J2F1		

USER CONFIGURABLE SETTINGS		
Function	Label	Position
í Flash BIOS normal operation	J7A1	Pins 1 & 2 closed
Flash BIOS recovery mode	J7A1	Pins 2 & 3 closed
í Password normal operation	J9C1A	Pins 1 & 2 closed
Password clear	J9C1A	Pins 2 & 3 closed
í CMOS memory normal operation	J9C1A	Pins 4 & 5 closed
CMOS memory clear	J9C1A	Pins 5 & 6 closed
í Setup access enabled	J9C1B	Pins 1 & 2 closed
Setup access disabled	J9C1B	Pins 2 & 3 closed
í Factory configured - do not alter	J9C1B	Open

DRAM CONFIGURATION (SDRAM)		
Size	Bank 0	Bank 1
8MB	(1) 1M x 64	None
16MB	(1) 2M x 64	None
32MB	(1) 4M x 64	None
16MB	(1) 1M x 64	(1) 1M x 64
24MB	(1) 2M x 64	(1) 1M x 64
40MB	(1) 4M x 64	(1) 1M x 64
32MB	(1) 2M x 64	(1) 2M x 64
48MB	(1) 4M x 64	(1) 2M x 64
64MB	(1) 4M x 64	(1) 4M x 64

Continued on next page...

INTEL CORPORATION

TE430VX

... continued from previous page

DRAM CONFIGURATION (DIMM EDO)		
Size	Bank 0	Bank 1
8MB	(1) 1M x 64	None
16MB	(1) 2M x 64	None
16MB	(1) 1M x 64	(1) 1M x 64
24MB	(1) 2M x 64	(1) 1M x 64
32MB	(1) 4M x 64	None
32MB	(1) 2M x 64	(1) 2M x 64
40MB	(1) 4M x 64	(1) 1M x 64
48MB	(1) 4M x 64	(1) 2M x 64
64MB	(1) 8M x 64	None
64MB	(1) 4M x 64	(1) 4M x 64
72MB	(1) 8M x 64	(1) 1M x 64
80MB	(1) 8M x 64	(1) 2M x 64
96MB	(1) 8M x 64	(1) 4M x 64
128MB	(1) 8M x 64	(1) 8M x 64

CACHE CONFIGURATION		
Size	Bank 0	SL1
256KB	(2) 32K x 32	Not installed
512KB	(2) 32K x 32	256KB module installed

Note: The location of the TAG chip is unidentified.

VIDEO MEMORY CONFIGURATION		
Size	Bank 0	Bank 1
1MB	1MB	None
2MB	1MB	(2) 256K x 16

Note: Bank 0 is factory installed and is not configurable.

CPU SPEED SELECTION				
CPU speed	Clock speed	Multiplier	J9C1C	J9C1D
75MHz	50MHz	1.5x	2 & 3, 5 & 6	1 & 2, 4 & 5
90MHz	60MHz	1.5x	2 & 3, 4 & 5	1 & 2, 4 & 5
100MHz	66MHz	1.5x	1 & 2, 5 & 6	1 & 2, 4 & 5
120MHz	60MHz	2x	2 & 3, 4 & 5	2 & 3, 4 & 5
133MHz	66MHz	2x	1 & 2, 5 & 6	2 & 3, 4 & 5
150MHz	60MHz	2.5x	2 & 3, 4 & 5	1 & 2, 5 & 6
166MHz	66MHz	2.5x	1 & 2, 5 & 6	1 & 2, 5 & 6
200MHz	66MHz	3x	1 & 2, 5 & 6	2 & 3, 5 & 6

Note: Pins designated should be in the closed position.

CPU TYPE SELECTION	
Type	J6M1
VR	Pins 2 & 3 closed
VRE	Pins 1 & 2 closed