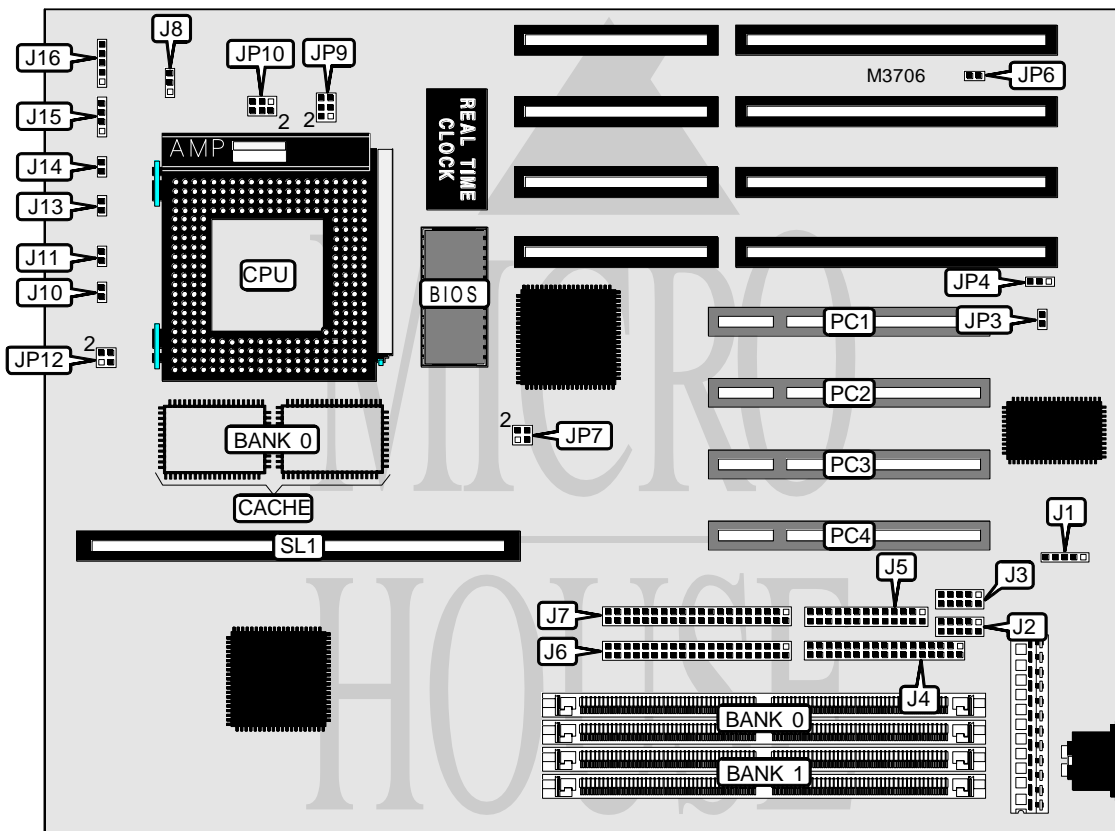


DIAMOND FLOWER, INC.

G 5 8 6 I P C

Processor	CX M1/Pentium
Processor Speed	75/90/100/120/133/150/166MHz
Chip Set	Intel
Video Chip Set	None
Maximum Onboard Memory	256MB (EDO supported)
Maximum Video Memory	None
Cache	256/512KB
BIOS	Award
Dimensions	250mm x 220mm
I/O Options	32-bit PCI slots (4), floppy drive interface, green PC connector, IDE interfaces (2), parallel port, PS/2 mouse interface, serial ports (2), cache slot
NPU Options	None



Continued on next page . . .

DIAMOND FLOWER, INC.
G586IPC

... continued from previous page

CONNECTIONS			
Purpose	Location	Purpose	Location
PS/2 mouse interface	J1	Green PC LED	J11
Serial port 1	J2	Green PC connector	J13
Serial port 2	J3	Reset switch	J14
Floppy drive interface	J4	Speaker	J15
Parallel port	J5	Power LED & keylock	J16
IDE interface 1	J6	32-bit PCI slots	PC1 - PC4
IDE interface 2	J7	Cache slot	SL1
IDE interface LED	J10		

USER CONFIGURABLE SETTINGS		
Function	Label	Position
í CMOS memory normal operation	J8	Open
CMOS memory clear	J8	Closed
í Password normal operation	JP3	Open
Password clear	JP3	Closed
í Monitor type select color	JP4	Pins 1 & 2 closed
Monitor type select monochrome	JP4	Pins 2 & 3 closed

DRAM CONFIGURATION		
Size	Bank 0	Bank 1
8MB	(2) 1M x 36	None
16MB	(2) 2M x 36	None
16MB	(2) 1M x 36	(2) 1M x 36
24MB	(2) 2M x 36	(2) 1M x 36
32MB	(2) 4M x 36	None
32MB	(2) 2M x 36	(2) 2M x 36
40MB	(2) 4M x 36	(2) 1M x 36
48MB	(2) 4M x 36	(2) 2M x 36
64MB	(2) 8M x 36	None
64MB	(2) 4M x 36	(2) 4M x 36
72MB	(2) 8M x 36	(2) 1M x 36
80MB	(2) 8M x 36	(2) 2M x 36
96MB	(2) 8M x 36	(2) 4M x 36
128MB	(2) 8M x 36	(2) 8M x 36
128MB	(2) 16M x 36	None
136MB	(2) 16M x 36	(2) 1M x 36
144MB	(2) 16M x 36	(2) 2M x 36
160MB	(2) 16M x 36	(2) 4M x 36
192MB	(2) 16M x 36	(2) 8M x 36
256MB	(2) 16M x 36	(2) 16M x 36

Note: Board accepts EDO memory. Board also accepts x 32 SIMMs. Banks are reversible.

Continued on next page...

DIAMOND FLOWER, INC.

G 5 8 6 I P C

... continued from previous page

CACHE CONFIGURATION		
Size	Bank 0	SL1
256KB	(2) 32K x 32	Not installed
256KB	None	256KB module installed
512KB	(2) 32K x 32	256KB module installed
512KB	None	512KB module installed

CPU SPEED SELECTION (CYRIX)			
CPU speed	JP6	JP7	JP12
120MHz	Closed	1 & 2	1 & 2
133MHz	Closed	3 & 4	1 & 2
150MHz	Closed	1 & 2	1 & 2, 3 & 4
166MHz	Closed	3 & 4	1 & 2, 3 & 4

Note: Pins designated should be in the closed position.

CPU SPEED SELECTION (INTEL)					
CPU speed	Clock speed	Multiplier	JP6	JP7	JP12
75MHz	50MHz	1.5x	Open	1 & 2, 3 & 4	Open
90MHz	60MHz	1.5x	Closed	1 & 2	Open
100MHz	66MHz	1.5x	Closed	3 & 4	Open
120MHz	60MHz	2x	Closed	1 & 2	1 & 2
133MHz	66MHz	2x	Closed	3 & 4	1 & 2
150MHz	60MHz	2.5x	Closed	1 & 2	1 & 2, 3 & 4
166MHz	66MHz	2.5x	Closed	3 & 4	1 & 2

Note: Pins designated should be in the closed position.

CPU VOLTAGE SELECTION		
Voltage	JP9	JP10
2.5v	Pins 1 & 2 closed	Pins 1 & 3, 2 & 4 closed
3.3v	Pins 5 & 6 closed	Pins 3 & 5, 4 & 6 closed