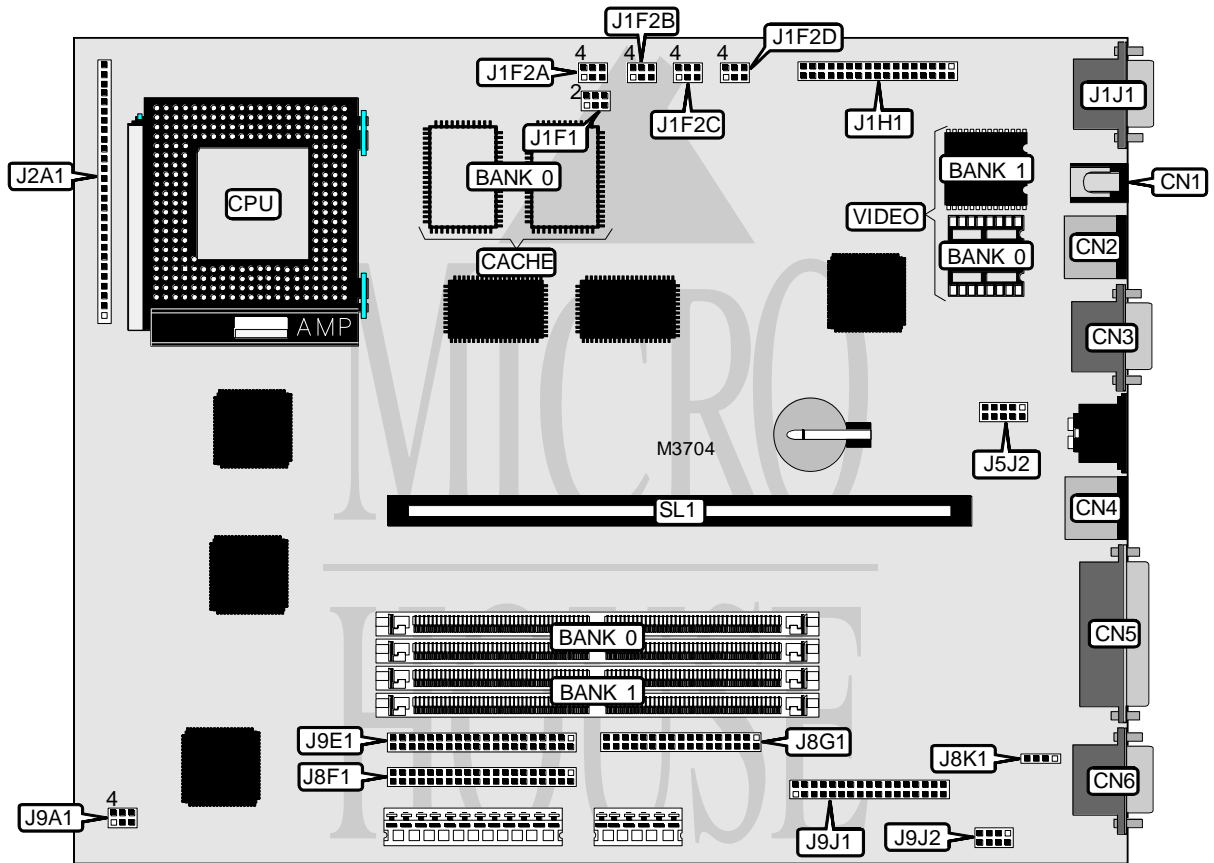


INTEL CORPORATION NV430VX

Processor	Pentium
Processor Speed	75/90/100/120/133/150/166/180/200MHz
Chip Set	Intel
Video Chip Set	S3
Maximum Onboard Memory	128MB (EDO supported)
Maximum Video Memory	2MB
Cache	256/512KB
BIOS	AMI
Dimensions	330mm x 218mm
I/O Options	CD-ROM interface, floppy drive interface, green PC connector, IDE interfaces (2), parallel port, PS/2 mouse port, serial ports (2), VESA feature connector, VGA port, IR connector, USB connector, wave table connector, RCA video in port, S video out port, MIDI/audio input connector, riser slot
NPU Options	None



Continued on next page . . .

INTEL CORPORATION

NV430VX

... continued from previous page

CONNECTIONS			
Purpose	Location	Purpose	Location
RCA video in port	CN1	Power on connector	J2A1 pins 15 - 16
S video out port	CN2	Green PC connector	J2A1 pins 17 & 18
USB connector	CN3	IR connector	J2A1 pins 20 - 25
PS/2 mouse port	CN4	Speaker	J2A1 pins 26 - 29
Parallel port	CN5	Serial port 1	J5J2
Serial port 2	CN6	IDE interface 1	J8F1
VESA feature connector	J1H1	Floppy drive interface	J8G1
VGA port	J1J1	CD-ROM connector	J8K1
Chassis fan power	J2A1 pins 1 - 3	IDE interface 2	J9E1
Reset switch	J2A1 pins 4 & 5	MIDI/audio input connector	J9J1
Power LED & keylock	J2A1 pins 6 - 10	Wave table connector	J9J2
IDE interface LED	J2A1 pins 11 - 14	Riser slot	SL1

USER CONFIGURABLE SETTINGS		
Function	Label	Position
í Password normal operation	J1F2A	Pins 1 & 2 closed
Password clear	J1F2A	Pins 2 & 3 closed
í CMOS memory normal operation	J1F2A	Pins 4 & 5 closed
CMOS memory clear	J1F2A	Pins 5 & 6 closed
í Setup access enabled	J1F2B	Pins 1 & 2 closed
Setup access disabled	J1F2B	Pins 2 & 3 closed
í Flash BIOS recovery mode disabled	J9A1	Pins 1 & 2 closed
Flash BIOS recovery mode enabled	J9A1	Pins 2 & 3 closed
í Flash BIOS programming normal operation	J9A1	Pins 4 & 5 closed
Flash BIOS programming mode enabled	J9A1	Pins 5 & 6 closed

DRAM CONFIGURATION		
Size	Bank 0	Bank 1
8MB	(2) 1M x 36	None
16MB	(2) 2M x 36	None
16MB	(2) 1M x 36	(2) 1M x 36
24MB	(2) 2M x 36	(2) 1M x 36
32MB	(2) 4M x 36	None
32MB	(2) 2M x 36	(2) 2M x 36
40MB	(2) 4M x 36	(2) 1M x 36
48MB	(2) 4M x 36	(2) 2M x 36
64MB	(2) 8M x 36	None
64MB	(2) 4M x 36	(2) 4M x 36
72MB	(2) 8M x 36	(2) 1M x 36
80MB	(2) 8M x 36	(2) 2M x 36
96MB	(2) 8M x 36	(2) 4M x 36
128MB	(2) 8M x 36	(2) 8M x 36

Note: Board accepts EDO memory. Board also accepts x 32 SIMMs.

Continued on next page...

INTEL CORPORATION

NV430VX

... continued from previous page

CACHE CONFIGURATION	
Size	Bank 0
256KB	(2) 32K x 32
512KB	(2) 64K x 32

Note: Board will come factory installed with one of the two above cache sizes.

VIDEO MEMORY CONFIGURATION		
Size	Bank 0	Bank 1
1MB	1MB	None
2MB	1MB	(2) 256K x 16

Note: Bank 0 is factory installed and is not configurable.

CPU SPEED SELECTION				
CPU speed	Clock speed	Multiplier	J1F2C	J1F2D
75MHz	50MHz	1.5x	2 & 3, 5 & 6	1 & 2, 4 & 5
90MHz	60MHz	1.5x	2 & 3, 5 & 6	1 & 2, 4 & 5
100MHz	66MHz	1.5x	1 & 2, 5 & 6	1 & 2, 4 & 5
120MHz	60MHz	2x	2 & 3, 4 & 5	2 & 3, 4 & 5
133MHz	66MHz	2x	1 & 2, 5 & 6	2 & 3, 4 & 5
150MHz	60MHz	2.5x	2 & 3, 4 & 5	2 & 3, 5 & 6
166MHz	66MHz	2.5x	1 & 2, 5 & 6	2 & 3, 5 & 6
180MHz	60MHz	3x	2 & 3, 4 & 5	1 & 2, 5 & 6
200MHz	66MHz	3x	1 & 2, 5 & 6	1 & 2, 5 & 6

Note: Pins designated should be in the closed position.

CPU TYPE SELECTION	
Type	J1F2B
Standard or VR	Pins 4 & 5 closed
VRE	Pins 5 & 6 closed

PCI SLOT SELECTION	
Setting	J1F1
2 PCI slots on riser card	Pins 1 & 2, 4 & 5 closed
3 PCI slots on riser card	Pins 2 & 3, 5 & 6 closed