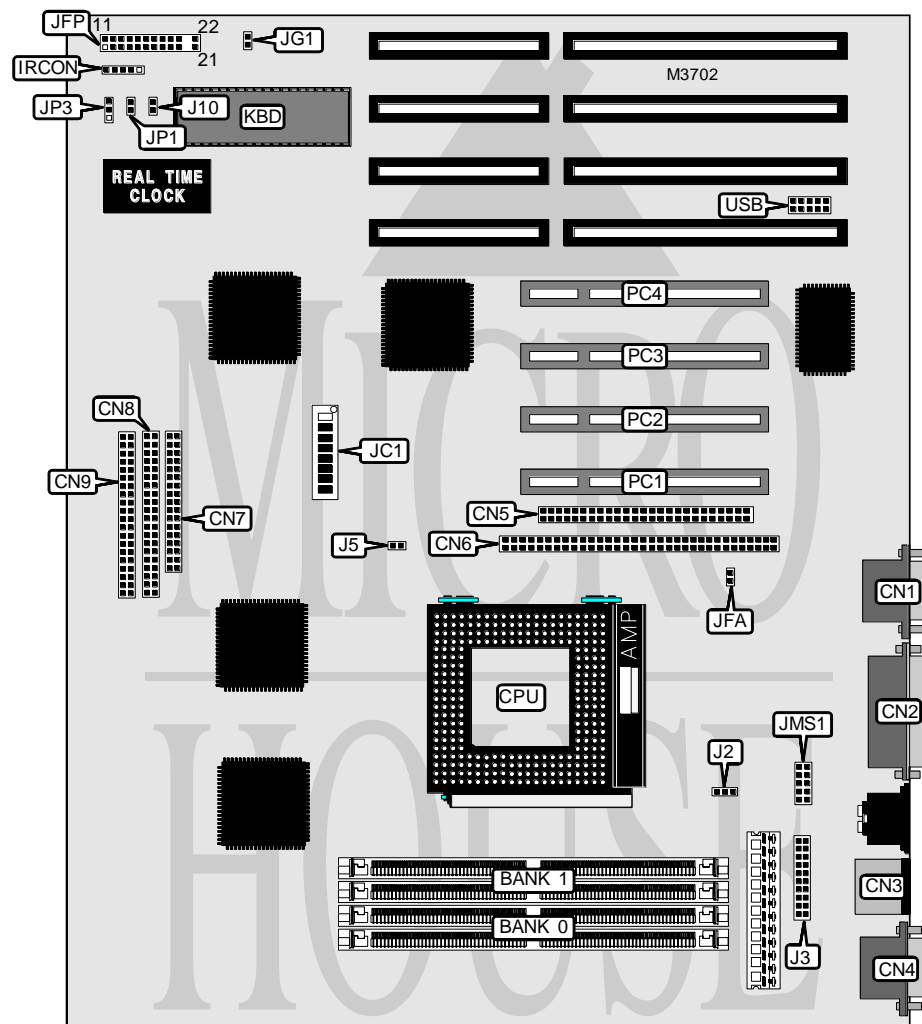


COMPUTREND SYSTEMS, INC.

PCI PENTIUM PRO (MODEL NO. 211A)

Processor	Pentium Pro
Processor Speed	150/166/180/200MHz
Chip Set	Intel
Video Chip Set	None
Maximum Onboard Memory	512MB (BEDO/EDO supported)
Maximum Video Memory	None
Cache	256/512KB (located on Pentium Pro CPU)
BIOS	Award
Dimensions	305mm x 245mm
I/O Options	32-bit PCI slots (4), green PC interface, floppy drive interface, IDE interfaces (2), SCSI interfaces (2), parallel port, PS/2 mouse port PS/2 mouse interface, serial ports (2), IR connector, USB connector, PS/2 5v voltage connector, CPU overheat connector, ATX power supply
NPU Options	None



Continued on next page . . .

COMPUTREND SYSTEMS, INC.

PCI PENTIUM PRO (MODEL NO. 211A)

... continued from previous page

CONNECTIONS			
Purpose	Location	Purpose	Location
Serial port 1	CN1	CPU overheat connector	J5
Parallel port	CN2	Remote on/off switch	J10
PS/2 mouse port	CN3	Chassis fan power	JFA
Serial port 2	CN4	Power Led & keylock	JFP pins 1 - 5
SCSI interface (50 pin)	CN5	Speaker	JFP pins 7 - 10
SCSI interface 2 (68 pin wide)	CN6	Turbo LED	JFP pins 12 & 13
Floppy drive interface	CN7	Reset switch	JFP pins 19 & 20
IDE interface 2	CN8	IDE interface LED	JFP pins 21 & 22
IDE interface 1	CN9	Green PC connector	JG1
IR connector	IRCON	PS/2 mouse interface	JMS1
PS/2 5v voltage connector	J2	32-bit PCI slots	PC1 - PC4
ATX power connector	J3	USB connector	USB

USER CONFIGURABLE SETTINGS		
Function	Label	Position
í CMOS memory normal operation	JP1	Open
CMOS memory clear	JP1	Closed
í Factory configured - do not alter (Flash BIOS voltage select)	JP3	Unidentified

DRAM CONFIGURATION		
Size	Bank 0	Bank 1
8MB	(2) 1M x 36	None
16MB	(2) 2M x 36	None
16MB	(2) 1M x 36	(2) 1M x 36
24MB	(2) 1M x 36	(2) 2M x 36
32MB	(2) 4M x 36	None
32MB	(2) 2M x 36	(2) 2M x 36
40MB	(2) 1M x 36	(2) 4M x 36
48MB	(2) 2M x 36	(2) 4M x 36
64MB	(2) 8M x 36	None
64MB	(2) 4M x 36	(2) 4M x 36
72MB	(2) 1M x 36	(2) 8M x 36
80MB	(2) 2M x 36	(2) 8M x 36
96MB	(2) 4M x 36	(2) 8M x 36
128MB	(2) 16M x 36	None
128MB	(2) 8M x 36	(2) 8M x 36
136MB	(2) 1M x 36	(2) 16M x 36
144MB	(2) 2M x 36	(2) 16M x 36
160MB	(2) 4M x 36	(2) 16M x 36
192MB	(2) 8M x 36	(2) 16M x 36
256MB	(2) 32M x 36	None
256MB	(2) 16M x 36	(2) 16M x 36

Continued on next page...

COMPUTREND SYSTEMS, INC.
 PCI PENTIUM PRO (MODEL NO. 211A)

... continued from previous page

DRAM CONFIGURATION (CON'T)		
Size	Bank 0	Bank 1
264MB	(2) 1M x 36	(2) 32M x 36
272MB	(2) 2M x 36	(2) 32M x 36
288MB	(2) 4M x 36	(2) 32M x 36
320MB	(2) 8M x 36	(2) 32M x 36
384MB	(2) 32M x 36	(2) 16M x 36
512MB	(2) 32M x 36	(2) 32M x 36

Note: Board accepts BEDO/EDO memory. Board also accepts x 32 SIMMs. Banks are interchangeable.

CACHE CONFIGURATION
Note: 256KB/512KB cache is located the Pentium Pro CPU.

CPU SPEED SELECTION								
Speed	JC1/1	JC1/2	JC1/3	JC1/4	JC1/5	JC1/6	JC1/7	JC1/8
150MHz	On	On	Off	Off	Off	On	On	On
166MHz	Off	Off	On	On	Off	On	On	On
180MHz	On	On	Off	Off	On	Off	On	On
200MHz	Off	Off	On	On	On	Off	On	On