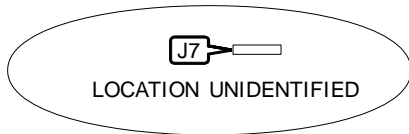
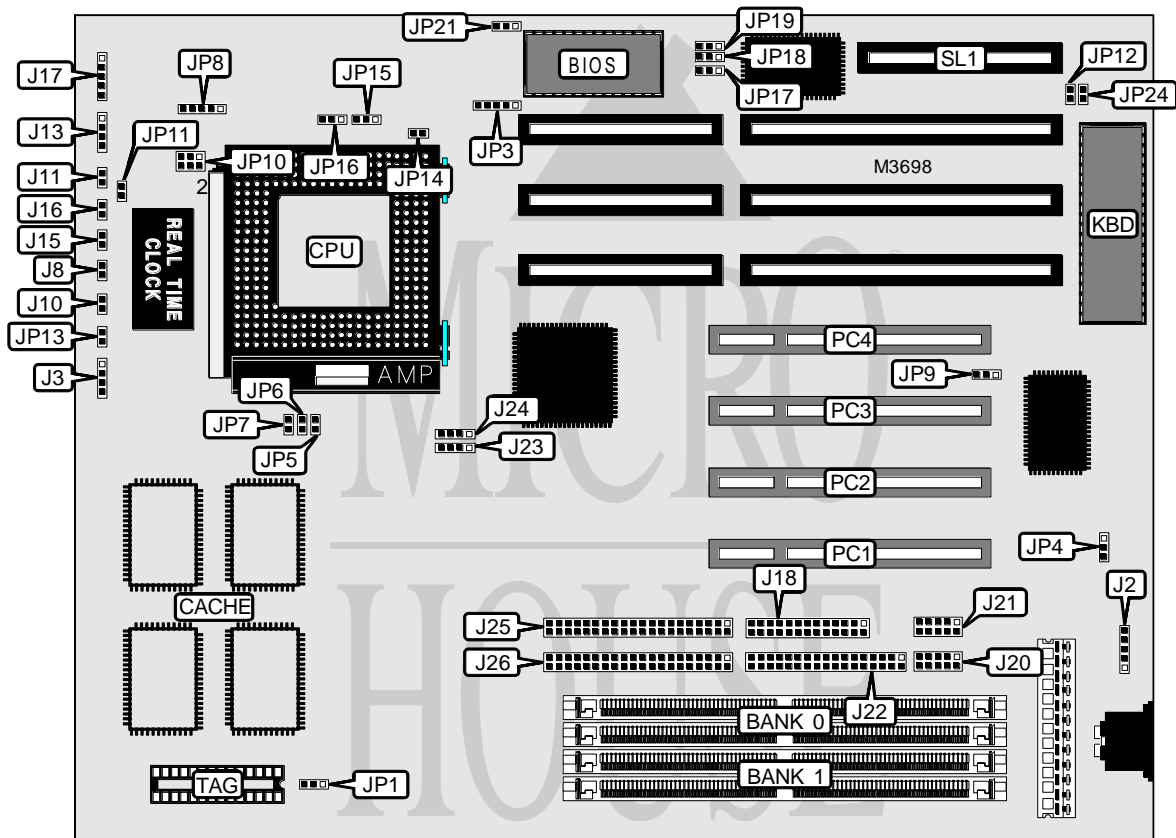


EFA CORPORATION

P55T2PIO (REV. 2.0), P55T2SPIO (REV. 2.0)

Processor	CX M1/AM K5/Pentium
Processor Speed	75/90/100/110/120/133/150/166/200MHz
Chip Set	Intel
Video Chip Set	None
Maximum Onboard Memory	512MB
Maximum Video Memory	None
Cache	256/512KB
BIOS	Award
Dimensions	280mm x 220mm
I/O Options	32-bit PCI slots (4), floppy drive interface, green PC connector, IDE interfaces (2), parallel port, PS/2 mouse interface, serial ports (2), USB connectors (2), IR connector, audio bus slot
NPU Options	None



Continued on next page . . .

EFA CORPORATION

P55T2PIO (REV. 2.0), P55T2SPIO (REV. 2.0)

... continued from previous page

CONNECTIONS			
Purpose	Location	Purpose	Location
PS/2 mouse interface	J2	Parallel port	J18
External battery	J3	Serial port 1	J20
IR connector	J7	Serial port 2	J21
IDE interface LED	J8	Floppy drive interface	J22
Green PC connector	J10	USB connector	J23
Reset switch	J11	USB connector	J24
Speaker	J13	IDE interface 1	J25
Turbo LED	J15	IDE interface 2	J26
Turbo switch	J16	32-bit PCI slots	PC1 - PC4
Power LED & keylock	J17	Audio bus slot	SL1

USER CONFIGURABLE SETTINGS		
Function	Label	Position
í Monitor type select color	JP12	Open
Monitor type select monochrome	JP12	Closed
í CMOS memory normal operation	JP13	Open
CMOS memory clear	JP13	Closed
DRAM refresh rate select 66MHz	JP14	Open
DRAM refresh rate select 60MHz	JP14	Closed
Flash BIOS normal operation	JP17	Pins 2 & 3 closed
Flash BIOS recovery mode	JP17	Pins 1 & 2 closed
Sound interface enabled	JP18	Pins 1 & 2 closed
Sound interface disabled	JP18	Pins 2 & 3 closed
í Flash BIOS voltage select 5v	JP19	Pins 2 & 3 closed
Flash BIOS voltage select 12v	JP19	Pins 1 & 2 closed
í BIOS type select 1MB EEPROM	JP21	Pins 1 & 2 closed
BIOS type select 2MB EEPROM	JP21	Pins 2 & 3 closed
í PS/2 mouse IRQ12 enabled	JP24	Closed
PS/2 mouse IRQ12 disabled	JP24	Open

DRAM CONFIGURATION		
Size	Bank 0	Bank 1
8MB	(2) 1M x 36	None
16MB	(2) 2M x 36	None
16MB	(2) 1M x 36	(2) 1M x 36
24MB	(2) 2M x 36	(2) 1M x 36
32MB	(2) 4M x 36	None
32MB	(2) 2M x 36	(2) 2M x 36
40MB	(2) 4M x 36	(2) 1M x 36
48MB	(2) 4M x 36	(2) 2M x 36
64MB	(2) 8M x 36	None
64MB	(2) 4M x 36	(2) 4M x 36

Continued on next page...

EFA CORPORATION

P55T2PIO (REV. 2.0), P55T2SPIO (REV. 2.0)

... continued from previous page

DRAM CONFIGURATION (CON'T)		
Size	Bank 0	Bank 1
72MB	(2) 8M x 36	(2) 1M x 36
80MB	(2) 8M x 36	(2) 2M x 36
96MB	(2) 8M x 36	(2) 4M x 36
128MB	(2) 8M x 36	(2) 8M x 36
128MB	(2) 16M x 36	None
136MB	(2) 16M x 36	(2) 1M x 36
144MB	(2) 16M x 36	(2) 2M x 36
160MB	(2) 16M x 36	(2) 4M x 36
192MB	(2) 16M x 36	(2) 8M x 36
256MB	(2) 16M x 36	(2) 16M x 36
256MB	(2) 32M x 36	None
264MB	(2) 32M x 36	(2) 1M x 36
272MB	(2) 32M x 36	(2) 2M x 36
288MB	(2) 32M x 36	(2) 4M x 36
320MB	(2) 32M x 36	(2) 8M x 36
384MB	(2) 32M x 36	(2) 16M x 36
512MB	(2) 32M x 36	(2) 32M x 36

Note: Board also accepts x 32 SIMMs.

CACHE CONFIGURATION			
Size	Bank 0	Bank 1	TAG
256KB	(2) 32K x 32	None	(1) 16K/32K x 8
512KB	(2) 32K x 32	(2) 32K x 32	(1) 16K/32K x 8

Note: The location of banks 0 & 1 are unidentified.

CACHE TAG CONFIGURATION	
Type	JP1
Aster 16K x 8	Pins 1 & 2 closed
Winbond 16K x 8	Open
32K x 8	Pins 2 & 3 closed

CACHE TYPE CONFIGURATION	
Type	JP7
Write through	Closed
Write back	Open

CPU SPEED SELECTION (CYRIX)							
CPU speed	Clock speed	Multiplier	JP5	JP6	JP11	JP15	JP16
100MHz	50MHz	2x	Closed	Closed	Open	1 & 2	2 & 3
110MHz	55MHz	2x	Open	Open	Open	1 & 2	2 & 3
120MHz	60MHz	2x	Open	Closed	Closed	1 & 2	2 & 3
133MHz	66MHz	2x	Closed	Open	Closed	1 & 2	2 & 3

Note: Pins designated should be in the closed position.

Continued on next page. . .

EFA CORPORATION

P55T2PIO (REV. 2.0), P55T2SPIO (REV. 2.0)

... continued from previous page

CPU SPEED SELECTION (AMD/INTEL)							
CPU speed	Clock speed	Multiplier	JP5	JP6	JP11	JP15	JP16
75MHz	50MHz	1.5x	Closed	Closed	Open	2 & 3	2 & 3
90MHz	60MHz	1.5x	Open	Closed	Closed	2 & 3	2 & 3
100MHz	66MHz	1.5x	Closed	Open	Closed	2 & 3	2 & 3
120MHz	60MHz	2x	Open	Closed	Closed	1 & 2	2 & 3
133MHz	66MHz	2x	Closed	Open	Closed	1 & 2	2 & 3
150MHz	60MHz	2.5x	Open	Closed	Closed	1 & 2	1 & 2
166MHz	66MHz	2.5x	Closed	Open	Closed	1 & 2	1 & 2
200MHz	66MHz	3x	Closed	Open	Closed	2 & 3	1 & 2

Note: Pins designated should be in the closed position.

CPU TYPE SELECTION		
Type	JP8	JP10
P54C (3.4v)	Pins 2 & 3 closed	Pins 1 & 3, 2 & 4 closed
P55C (2.5v)	Pins 1 & 2 closed	Pins 3 & 5, 4 & 6 closed
P55C (2.8v)	Pins 4 & 5 closed	Pins 3 & 5, 4 & 6 closed

CPU VOLTAGE SELECTION	
Voltage	JP3
3.3v (STD)	Pins 1 & 2 closed
3.4v (VR)	Pins 2 & 3 closed
3.5v (VRE)	Pins 4 & 5 closed

MULTI I/O SELECTION		
Setting	JP4	JP9
Enabled	Pins 2 & 3 closed	Pins 1 & 2 closed
Disabled	Pins 1 & 2 closed	Pins 2 & 3 closed