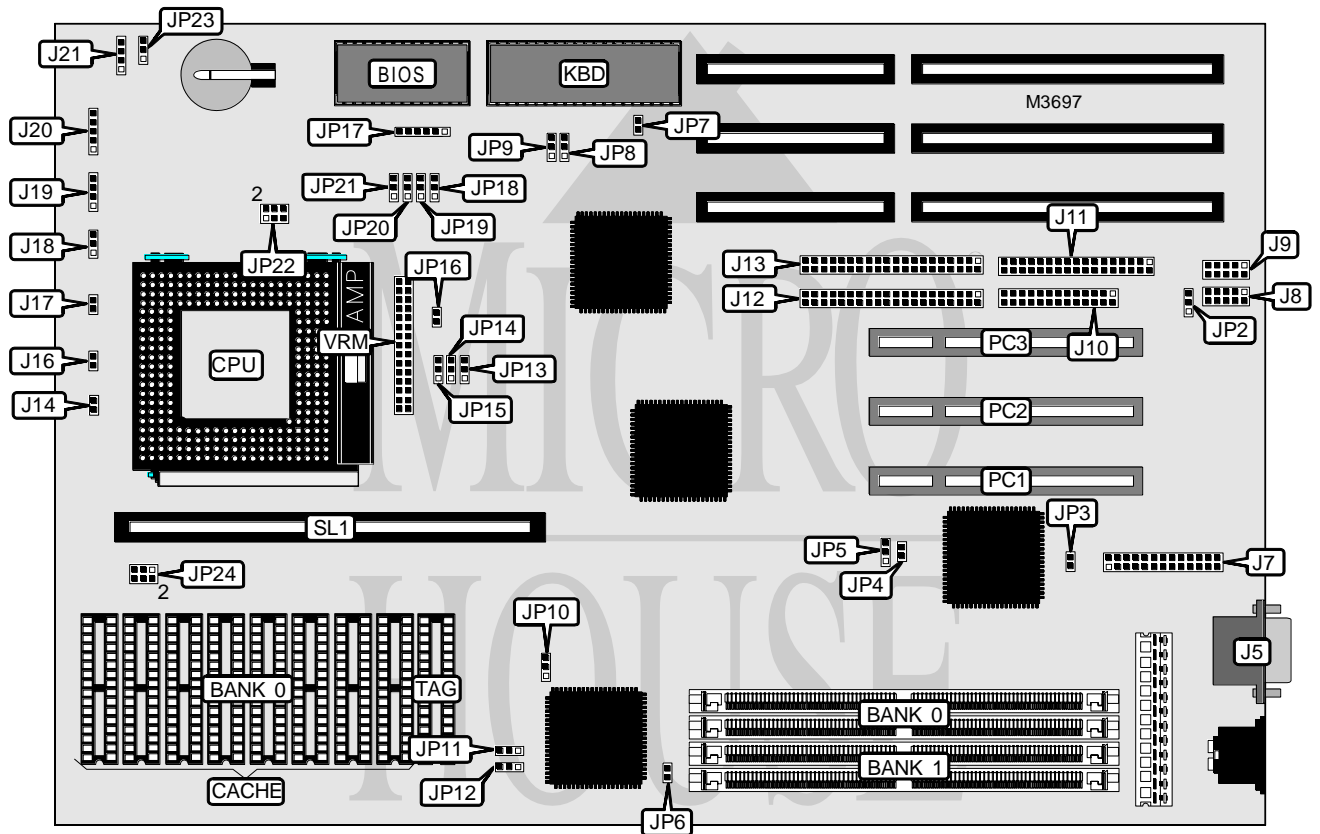


# EFA CORPORATION P55SVPIO

<b>Processor</b>	CX M1/Pentium
<b>Processor Speed</b>	75/90/100/120/133/150/166MHz
<b>Chip Set</b>	SIS
<b>Video Chip Set</b>	None
<b>Maximum Onboard Memory</b>	128MB (EDO supported)
<b>Maximum Video Memory</b>	None
<b>Cache</b>	256/512KB
<b>BIOS</b>	Award
<b>Dimensions</b>	330mm x 220mm
<b>I/O Options</b>	32-bit PCI slots (3), floppy drive interface, IDE interfaces (2), parallel port, serial ports (2), VGA feature connector, VGA port, cache slot, VRM connector
<b>NPU Options</b>	None



Continued on next page. . .

# EFA CORPORATION

## P55SVPIO

... continued from previous page

CONNECTIONS			
Purpose	Location	Purpose	Location
VGA port	J5	Reset switch	J16
VGA feature connector	J7	Turbo LED	J17
Serial port 2	J8	Turbo switch	J18
Serial port 1	J9	Speaker	J19
Parallel port	J10	Power LED & keylock	J20
Floppy drive interface	J11	External battery	J21
IDE interface 1	J12	32-bit PCI slots	PC1 - PC3
IDE interface 2	J13	Cache slot	SL1
IDE interface LED	J14	VRM connector	VRM

USER CONFIGURABLE SETTINGS		
Function	Label	Position
Chipset select SMC665	JP2	Pins 2 & 3 closed
Chipset select SMC669	JP2	Pins 1 & 2 closed
Monitor type select EGA/VGA	JP7	Open
Monitor type select monochrome	JP7	Closed
í Factory configured - do not alter	JP8	Pins 1 & 2 closed
í Factory configured - do not alter	JP9	Pins 1 & 2 closed
í Factory configured - do not alter	JP15	Pins 1 & 2 closed
BIOS type select flash BIOS	JP17	Pins 1 & 2, 5 & 6 closed
BIOS type select EPROM	JP17	Pins 2 & 3, 4 & 5 closed
í Factory configured - do not alter	JP20	Pins 2 & 3 closed
í Factory configured - do not alter	JP21	Pins 1 & 2 closed
í CMOS memory normal operation	JP23	Pins 1 & 2 closed
CMOS memory clear	JP23	Pins 2 & 3 closed

DRAM CONFIGURATION		
Size	Bank 0	Bank 1
4MB	(2) 512K x 36	None
8MB	(2) 1M x 36	None
8MB	(2) 512K x 36	(2) 512K x 36
12MB	(2) 1M x 36	(2) 512K x 36
16MB	(2) 2M x 36	None
16MB	(2) 1M x 36	(2) 1M x 36
20MB	(2) 2M x 36	(2) 512K x 36
24MB	(2) 2M x 36	(2) 1M x 36
32MB	(2) 4M x 36	None
32MB	(2) 2M x 36	(2) 2M x 36
36MB	(2) 4M x 36	(2) 512K x 36
40MB	(2) 4M x 36	(2) 1M x 36
48MB	(2) 4M x 36	(2) 2M x 36
64MB	(2) 8M x 36	None

Continued on next page...

# EFA CORPORATION

## P55SVPIO

... continued from previous page

DRAM CONFIGURATION (CON'T)		
Size	Bank 0	Bank 1
64MB	(2) 4M x 36	(2) 4M x 36
68MB	(2) 8M x 36	(2) 512K x 36
72MB	(2) 8M x 36	(2) 1M x 36
80MB	(2) 8M x 36	(2) 2M x 36
96MB	(2) 8M x 36	(2) 4M x 36
128MB	(2) 8M x 36	(2) 8M x 36

Note: Board accepts EDO memory. Board also accepts x 32 SIMMs. If using x 32 SIMMs, one module may be installed in the first socket on Bank 0 labeled SIMM 1.

DRAM JUMPER CONFIGURATION	
Type	JP6
EDO	Closed
Fast page	Open

CACHE CONFIGURATION			
Size	Bank 0	TAG	SL1
256KB (A)	(8) 32K x 8	(1) 32K x 8	Not installed
256KB (B)	None	None	256KB module installed
512KB (A)	(8) 64K x 8	(1) 32K x 8	Not installed
512KB (B)	None	None	512KB module installed

CACHE JUMPER CONFIGURATION			
Size	JP10	JP11	JP12
256KB (A)	Pins 1 & 2 closed	Pins 1 & 2 closed	Pins 1 & 2 closed
256KB (B)	Pins 2 & 3 closed	Open	Open
512KB (A)	Pins 1 & 2 closed	Pins 2 & 3 closed	Pins 1 & 2 closed
512KB (B)	Pins 2 & 3 closed	Open	Open

CACHE VOLTAGE CONFIGURATION	
Voltage	JP24
Mixed	Pins 3 & 5, 4 & 6 closed
3.3v	Pins 1 & 3, 2 & 4 closed

Continued on next page...

EFA CORPORATION  
P55SVPIO

... continued from previous page

CPU SPEED SELECTION						
CPU speed	Clock speed	Multiplier	JP13	JP14	JP18	JP19
N/A	40MHz	N/A	1 & 2	1 & 2	N/A	N/A
75MHz	50MHz	1.5x	2 & 3	2 & 3	1 & 2	1 & 2
90MHz	60MHz	1.5x	1 & 2	2 & 3	1 & 2	1 & 2
100MHz	66MHz	1.5x	2 & 3	1 & 2	1 & 2	1 & 2
120MHz	60MHz	2x	1 & 2	2 & 3	1 & 2	2 & 3
133MHz	66MHz	2x	2 & 3	1 & 2	1 & 2	2 & 3
150MHz	60MHz	2.5x	1 & 2	2 & 3	2 & 3	2 & 3
166MHz	66MHz	2.5x	2 & 3	1 & 2	2 & 3	2 & 3
N/A	N/A	3x	N/A	N/A	2 & 3	1 & 2
N/A	N/A	3x	N/A	N/A	2 & 3	1 & 2

Note: Pins designated should be in the closed position.

CPU VOLTAGE SELECTION		
Voltage	JP16	JP22
3.3v	Open	Pins 1 & 2, 3 & 4, 5 & 6 closed
VRM installed	Closed	Open

ON BOARD VGA SELECTION			
Setting	JP3	JP4	JP5
Enabled	Closed	Closed	Pins 1 & 2 closed
Disabled	Open	Open	Pins 2 & 3 closed