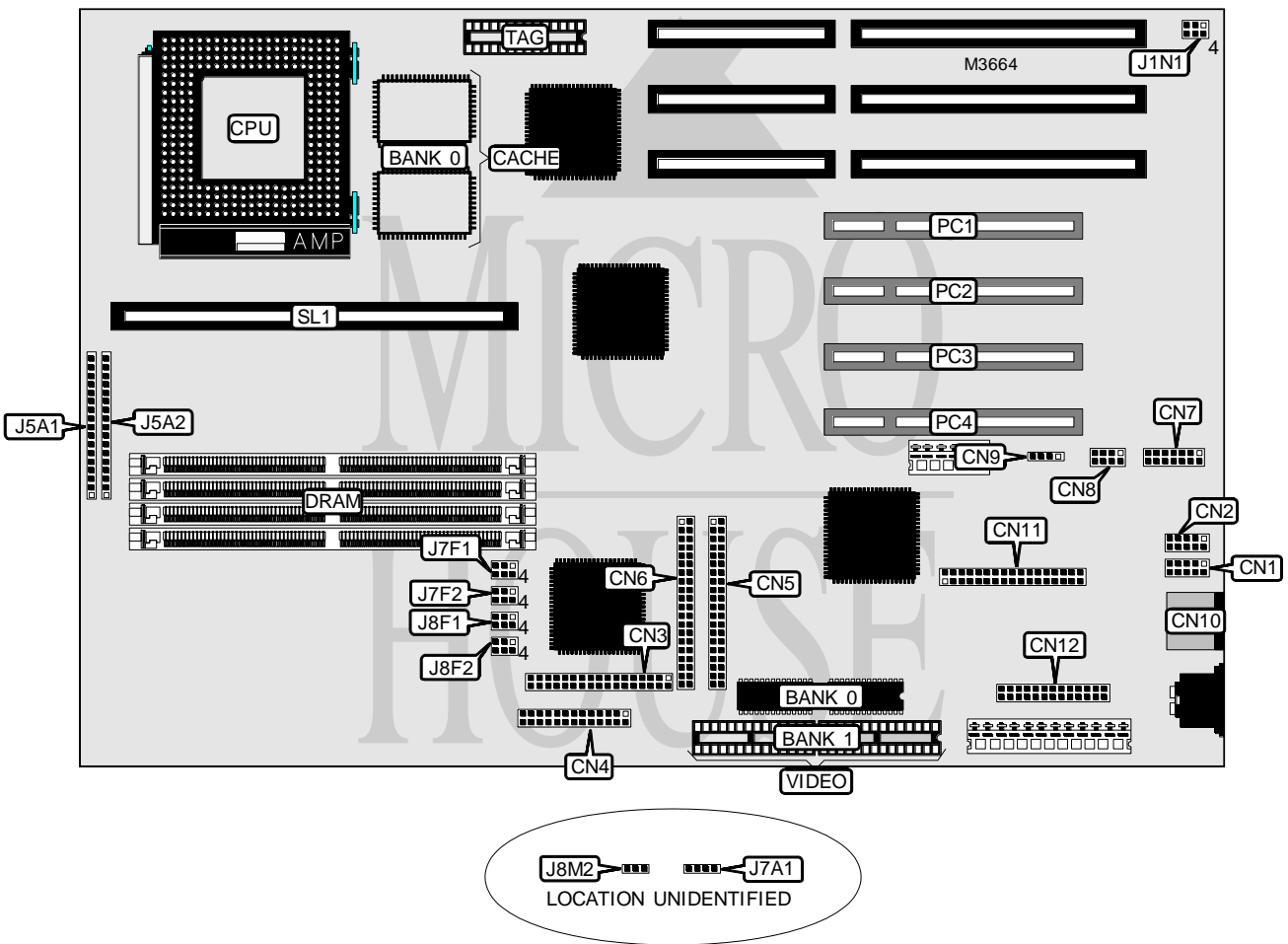


INTEL CORPORATION ADVANCED/AS

| | |
|-------------------------------|---|
| Processor | Pentium |
| Processor Speed | 75/90/100/120/133/150/166/200MHz |
| Chip Set | Intel |
| Video Chip Set | ATI |
| Maximum Onboard Memory | 128MB (EDO supported) |
| Maximum Video Memory | 2MB |
| Cache | 256/512KB |
| BIOS | AMI |
| Dimensions | 330mm x 218mm |
| I/O Options | 32-bit PCI slots (4), floppy drive interface, green PC connector, IDE interfaces (2), parallel port, PS/2 mouse port, serial ports (2), VESA feature connector, riser slot, cache slot, IR connector, wave table connector, audio connector, CD-ROM connector |
| NPU Options | None |



Continued on next page...

INTEL CORPORATION ADVANCED/AS

... continued from previous page

| CONNECTIONS | | | |
|----------------------------|----------|----------------------|-------------------|
| Purpose | Location | Purpose | Location |
| Serial port 1 | CN1 | Turbo LED | J5A1 pins 1 & 2 |
| Serial port 2 | CN2 | IDE interface LED | J5A1 pins 5 - 8 |
| Floppy drive interface | CN3 | Power LED & keylock | J5A1 pins 10 - 15 |
| Parallel port | CN4 | Reset switch | J5A1 pins 16 & 17 |
| IDE interface 1 | CN5 | Green PC connector | J5A2 pins 1 & 2 |
| IDE interface 2 | CN6 | IR connector | J5A2 pins 4 - 8 |
| Video connector (optional) | CN7 | Chassis fan power | J5A2 pins 10 - 12 |
| Wave table connector | CN8 | Speaker | J5A2 pins 14 - 17 |
| CD-ROM interface | CN9 | Soft off/sleep | J7A1 |
| PS/2 mouse port | CN10 | Soft power supply on | J8M2 |
| Audio connector | CN11 | 32-bit PCI slots | PC1 - PC4 |
| VESA feature connector | CN12 | Cache slot | SL1 |

| USER CONFIGURABLE SETTINGS | | |
|---|-------|-------------------|
| Function | Label | Position |
| Factory configured - do not alter (pins 1, 2, & 3 only) | J1N1 | N/A |
| í Password normal operation | J7F1 | Pins 4 & 5 closed |
| Password clear | J7F1 | Pins 5 & 6 closed |
| í Setup access enabled | J7F2 | Pins 1 & 2 closed |
| Setup access disabled | J7F2 | Pins 2 & 3 closed |
| í CMOS memory normal operation | J7F2 | Pins 4 & 5 closed |
| CMOS memory clear | J7F2 | Pins 5 & 6 closed |

| DRAM CONFIGURATION | | |
|--------------------|-------------|-------------|
| Size | Bank 0 | Bank 1 |
| 8MB | (2) 1M x 32 | None |
| 16MB | (2) 2M x 32 | None |
| 16MB | (2) 1M x 32 | (2) 1M x 32 |
| 24MB | (2) 2M x 32 | (2) 1M x 32 |
| 24MB | (2) 1M x 32 | (2) 2M x 32 |
| 32MB | (2) 4M x 32 | None |
| 32MB | (2) 2M x 32 | (2) 2M x 32 |
| 40MB | (2) 4M x 32 | (2) 1M x 32 |
| 40MB | (2) 1M x 32 | (2) 4M x 32 |
| 48MB | (2) 4M x 32 | (2) 2M x 32 |
| 48MB | (2) 2M x 32 | (2) 4M x 32 |
| 64MB | (2) 8M x 32 | None |
| 64MB | (2) 4M x 32 | (2) 4M x 32 |
| 72MB | (2) 8M x 32 | (2) 1M x 32 |
| 72MB | (2) 1M x 32 | (2) 8M x 32 |
| 80MB | (2) 8M x 32 | (2) 2M x 32 |

Continued on next page...

INTEL CORPORATION ADVANCED/AS

... continued from previous page

| DRAM CONFIGURATION (CON'T) | | |
|----------------------------|-------------|-------------|
| Size | Bank 0 | Bank 1 |
| 80MB | (2) 2M x 32 | (2) 8M x 32 |
| 96MB | (2) 8M x 32 | (2) 4M x 32 |
| 96MB | (2) 4M x 32 | (2) 8M x 32 |
| 128MB | (2) 8M x 32 | (2) 8M x 32 |

Note: Board accepts EDO memory. The location of banks 0 & 1 are unidentified. Board also accepts x 36 SIMMs.

| CACHE CONFIGURATION | | | |
|---------------------|--------------|------------------------|--------------|
| Size | Bank 0 | SL1 | TAG |
| 256KB | (2) 32K x 32 | None | Unidentified |
| 512KB | (2) 32K x 32 | 256KB module installed | Unidentified |

Note: The size of the TAG chip is unidentified.

| VIDEO MEMORY CONFIGURATION | | |
|----------------------------|--------|---------------|
| Size | Bank 0 | Bank 1 |
| 1MB | 1MB | None |
| 2MB | 1MB | (2) 256K x 16 |

Note: Bank 0 is factory installed and is not configurable.

| CPU SPEED SELECTION | | | | | |
|---------------------|-------------|------------|-------|--------------|-------|
| CPU speed | Clock speed | Multiplier | J1N1 | J8F1 | J8F2 |
| 75MHz | 50MHz | 1.5x | 4 & 5 | 1 & 2, 5 & 6 | 1 & 2 |
| 90MHz | 60MHz | 1.5x | 4 & 5 | 1 & 2, 4 & 5 | 1 & 2 |
| 100MHz | 66MHz | 1.5x | 4 & 5 | 2 & 3, 5 & 6 | 1 & 2 |
| 120MHz | 60MHz | 2x | 4 & 5 | 1 & 2, 4 & 5 | 2 & 3 |
| 133MHz | 66MHz | 2x | 4 & 5 | 2 & 3, 5 & 6 | 2 & 3 |
| 150MHz | 60MHz | 2.5x | 5 & 6 | 1 & 2, 4 & 5 | 2 & 3 |
| 166MHz | 66MHz | 2.5x | 5 & 6 | 2 & 3, 5 & 6 | 2 & 3 |
| 200MHz | 66MHz | 3x | 5 & 6 | 2 & 3, 5 & 6 | 1 & 2 |

Note: Pins designated should be in the closed position.

| CPU VOLTAGE SELECTION | |
|-----------------------|-------------------|
| Voltage | J8F2 |
| 3.3v - 3.3465v | Pins 4 & 5 closed |
| 3.465v - 3.63v | Pins 5 & 6 closed |

| CPU ISA BUS CLOCK SELECTION | | |
|-----------------------------|-----------|----------------------------|
| Clock speed | Bus speed | J7F1 |
| 50MHz | 8.33MHz | Pins 1 & 2 or 2 & 3 closed |
| í 60MHz | 7.5MHz | Pins 1 & 2 closed |
| 60MHz | 10MHz | Pins 2 & 3 closed |
| í 66MHz | 8.25MHz | Pins 1 & 2 closed |
| 66MHz | 11MHz | Pins 2 & 3 closed |