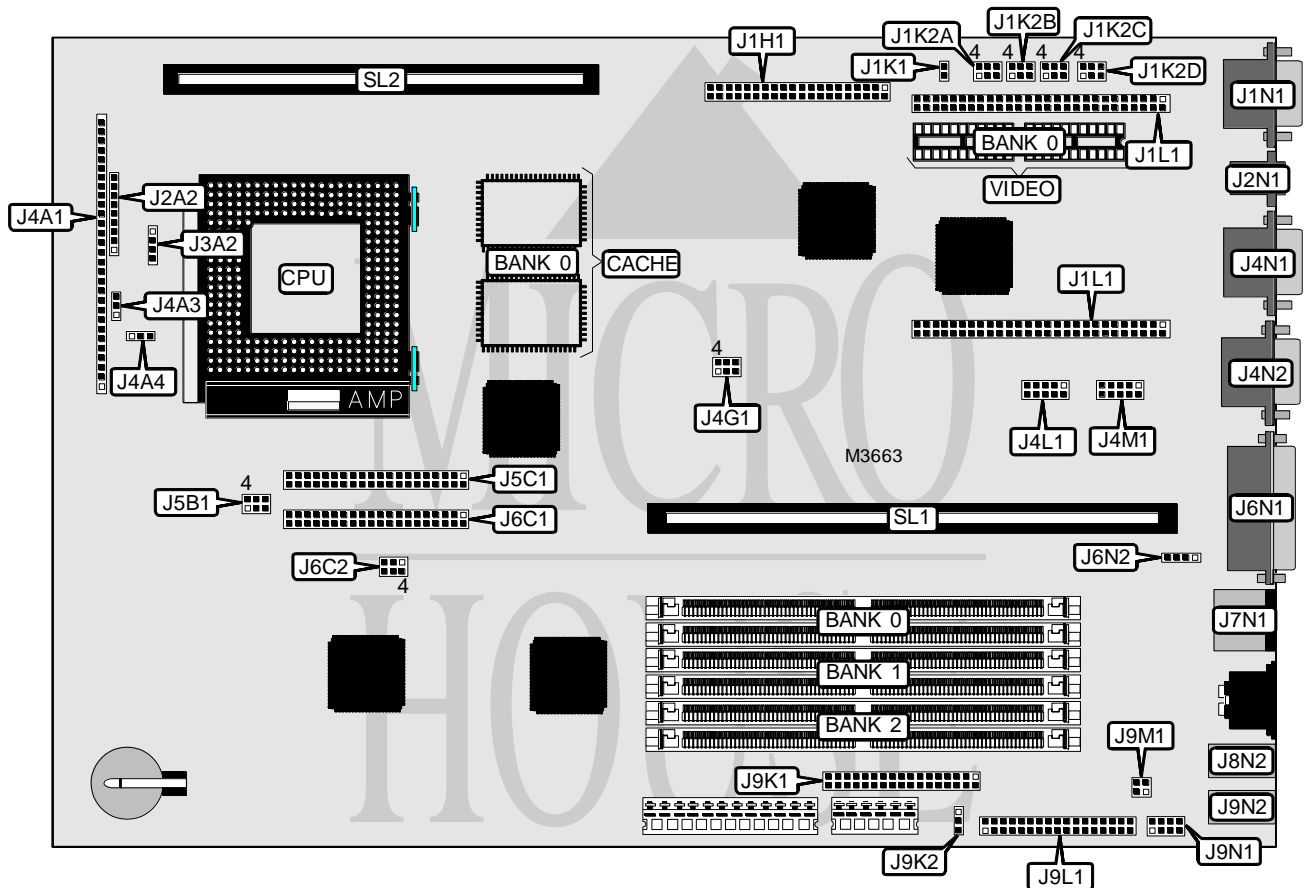


# INTEL CORPORATION

## CU430HX

<b>Processor</b>	Pentium
<b>Processor Speed</b>	75/90/100/120/133/150/166/200MHz
<b>Chip Set</b>	Intel
<b>Video Chip Set</b>	ATI
<b>Maximum Onboard Memory</b>	192MB (EDO supported)
<b>Maximum Video Memory</b>	4MB
<b>Cache</b>	256/512KB
<b>BIOS</b>	Unidentified
<b>Dimensions</b>	300mm x 210mm
<b>I/O Options</b>	Floppy drive interface, green PC connector, IDE interfaces (2), parallel port, PS/2 mouse port, serial ports (3), VGA header connector, VGA port, riser slot, cache slot, IR connector, USB connector, LAN connector, microphone port, audio output port, CD audio connector, modem connector, wave table connector, MIDI/audio interface
<b>NPU Options</b>	None



*Continued on next page . . .*

# INTEL CORPORATION

## CU430HX

... continued from previous page

CONNECTIONS			
Purpose	Location	Purpose	Location
Security connector	J1K1	Serial port 2	J4M1
VGA header connector	J1H1	USB connector	J4N1
VGA port	J1N1	Serial port 3	J4N2
Front panel connector	J2A2	IDE interface 1	J5C1
LAN connector	J2N1	IDE interface 2	J6C1
Power LED/IDE interface LED	J3A2	Parallel port	J6N1
Chassis fan power	J4A1 pins 1 - 3	CD audio connector	J6N2
Reset switch	J4A1 pins 4 & 5	PS/2 mouse port	J7N1
Power LED	J4A1 pins 7 - 10	Microphone port	J8N2
IDE interface LED	J4A1 pins 11 - 14	Floppy drive interface	J9K1
Power supply on connector	J4A1 pins 15 & 16	MIDI/audio interface	J9L1
Green PC connector	J4A1 pins 17 & 18	Modem connector	J9M1
IR connector	J4A1 pins 20 - 25	Wave table connector	J9N1
Speaker	J4A1 pins 26 - 29	Audio output port	J9N2
Keylock	J4A3	Riser slot	SL1
Chassis fan power	J4A4	Cache slot	SL2
Serial port 1	J4L1		

USER CONFIGURABLE SETTINGS		
Function	Label	Position
í Password normal operation	J1K2A	Pins 1 & 2 closed
Password clear	J1K2A	Pins 2 & 3 closed
í CMOS memory normal operation	J1K2A	Pins 4 & 5 closed
CMOS memory clear	J1K2A	Pins 5 & 6 closed
í Setup access enabled	J1K2B	Pins 1 & 2 closed
Setup access disabled	J1K2B	Pins 2 & 3 closed
í Factory configured - do not alter	J1K2B	Pins 5 & 6 closed
í 2 PCI slots on riser card	J4G1	Pins 1 & 2, 4 & 5 closed
3 PCI slots on riser card	J4G1	Pins 2 & 3, 5 & 6 closed
í Flash BIOS normal operation	J6C2	Pins 1 & 2 closed
Flash BIOS recovery mode	J6C2	Pins 2 & 3 closed

DRAM CONFIGURATION			
Size	Bank 0	Bank 1	Bank 2
16MB	(2) 1M x 36	(2) 1M x 36	None
16MB	(2) 2M x 36	None	None
24MB	(2) 2M x 36	(2) 1M x 36	None
24MB	(2) 1M x 36	(2) 1M x 36	(2) 1M x 36
32MB	(2) 4M x 36	None	None
32MB	(2) 2M x 36	(2) 2M x 36	None
40MB	(2) 4M x 36	(2) 1M x 36	None
48MB	(2) 4M x 36	(2) 2M x 36	None

Continued on next page...

# INTEL CORPORATION

## CU430HX

... continued from previous page

DRAM CONFIGURATION (CON'T)			
Size	Bank 0	Bank 1	Bank 2
48MB	(2) 4M x 36	(2) 1M x 36	(2) 1M x 36
64MB	(2) 8M x 36	None	None
64MB	(2) 4M x 36	(2) 4M x 36	None
80MB	(2) 8M x 36	(2) 2M x 36	None
80MB	(2) 8M x 36	(2) 1M x 36	(2) 1M x 36
88MB	(2) 8M x 36	(2) 2M x 36	(2) 1M x 36
96MB	(2) 8M x 36	(2) 4M x 36	None
96MB	(2) 4M x 36	(2) 4M x 36	(2) 4M x 36
96MB	(2) 8M x 36	(2) 2M x 36	(2) 2M x 36
104MB	(2) 8M x 36	(2) 4M x 36	(2) 1M x 36
112MB	(2) 8M x 36	(2) 4M x 36	(2) 2M x 36
128MB	(2) 8M x 36	(2) 4M x 36	(2) 4M x 36
128MB	(2) 8M x 36	(2) 8M x 36	None
136MB	(2) 8M x 36	(2) 8M x 36	(2) 1M x 36
144MB	(2) 8M x 36	(2) 8M x 36	(2) 2M x 36
160MB	(2) 16M x 36	(2) 4M x 36	None
192MB	(2) 8M x 36	(2) 8M x 36	(2) 8M x 36

Note: Board accepts EDO memory. Board also accepts x 32 SIMMs.

CACHE CONFIGURATION		
Size	Bank 0	SL1
256KB	(2) 32K x 32	None
512KB	(2) 32K x 32	256KB module installed

VIDEO MEMORY CONFIGURATION		
Size	Bank 0	J1L1
1MB	(2) 128K x 32	None
4MB	(2) 128K x 32	Module installed

Note: Module is inserted in both connectors labeled J1L1.

CPU SPEED SELECTION				
CPU speed	Clock speed	Multiplier	J1K2C	J1K2D
75MHz	50MHz	1.5x	2 & 3, 5 & 6	1 & 2, 4 & 5
90MHz	60MHz	1.5x	2 & 3, 4 & 5	1 & 2, 4 & 5
100MHz	66MHz	1.5x	1 & 2, 5 & 6	1 & 2, 4 & 5
120MHz	60MHz	2x	2 & 3, 4 & 5	2 & 3, 4 & 5
133MHz	66MHz	2x	1 & 2, 5 & 6	2 & 3, 4 & 5
150MHz	60MHz	2.5x	2 & 3, 4 & 5	2 & 3, 5 & 6
166MHz	66MHz	2.5x	1 & 2, 5 & 6	2 & 3, 5 & 6
200MHz	66MHz	3x	1 & 2, 5 & 6	1 & 2, 5 & 6

Note: Pins designated should be in the closed position.

Continued on next page...

**INTEL CORPORATION**  
**CU430HX***... continued from previous page*

<b>CPU TYPE SELECTION</b>	
<b>Type</b>	<b>J6C2</b>
VR	Pins 4 & 5 closed
VRE	Pins 5 & 6 closed

<b>VCC2 SELECTION</b>	
<b>Setting</b>	<b>J5B1</b>
VCC2 not connected	Open
VCC2 connected (processors using MMX technology)	Pins 1 & 4, 2 & 5, 3 & 6 closed