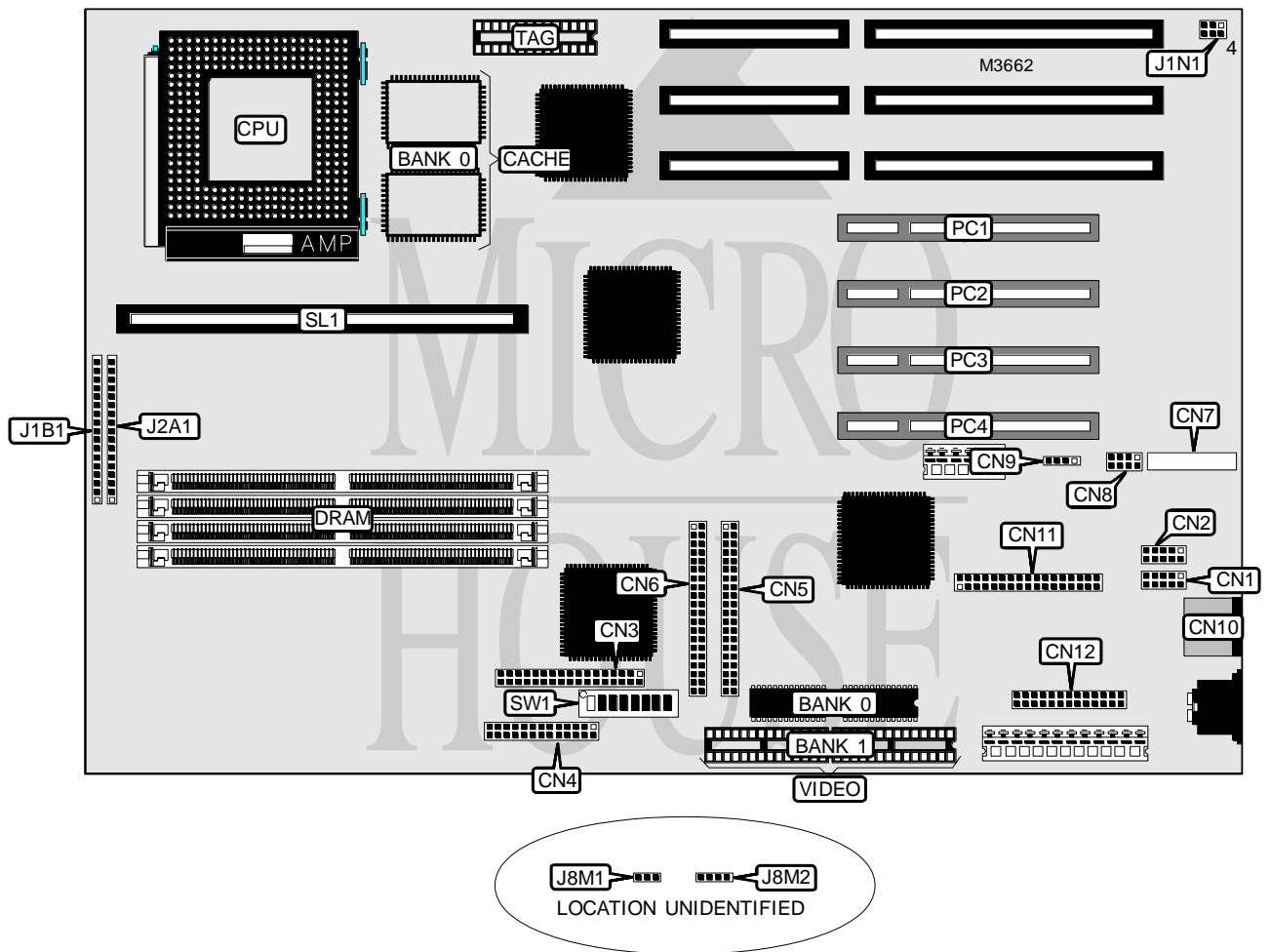


INTEL CORPORATION ADVANCED/EV (REV. 2)

Processor	Pentium
Processor Speed	75/90/100/120/133/150/166/200MHz
Chip Set	Intel
Video Chip Set	S3
Maximum Onboard Memory	128MB (EDO supported)
Maximum Video Memory	2MB
Cache	256/512/768KB
BIOS	AMI
Dimensions	330mm x 218mm
I/O Options	32-bit PCI slots (4), floppy drive interface, green PC connector, IDE interfaces (2), parallel port, PS/2 mouse port, serial ports (2), VESA feature connector, riser slot, cache slot, IR connector, wave table connector, audio connector, CD-ROM connector
NPU Options	None



Continued on next page . . .

INTEL CORPORATION ADVANCED/EV (REV. 2)

... continued from previous page

CONNECTIONS			
Purpose	Location	Purpose	Location
Serial port 1	CN1	Turbo LED	J1B1 pins 1 & 2
Serial port 2	CN2	IDE interface LED	J1B1 pins 5 - 8
Floppy drive interface	CN3	Power LED & keylock	J1B1 pins 10 - 15
Parallel port	CN4	Reset switch	J1B1 pins 16 & 17
IDE interface 1	CN5	Green PC connector	J2A1 pins 1 & 2
IDE interface 2	CN6	IR connector	J2A1 pins 4 - 8
Video connector (optional)	CN7	Chassis fan power	J2A1 pins 10 - 12
Wave table connector	CN8	Speaker	J2A1 pins 14 - 17
CD-ROM interface	CN9	Soft power supply on	J8M1
PS/2 mouse port	CN10	Soft off/sleep	J8M2
Audio connector	CN11	32-bit PCI slots	PC1 - PC4
VESA feature connector	CN12	Cache slot	SL1

USER CONFIGURABLE SETTINGS		
Function	Label	Position
í Flash BIOS normal operation	J1N1	Pins 1 & 2 closed
Flash BIOS recovery mode	J1N1	Pins 2 & 3 closed
í Password normal operation	SW1/3	Off
Password clear	SW1/3	On
í CMOS memory normal operation	SW1/4	Off
CMOS memory clear	SW1/4	On
í Setup access enabled	SW1/5	Off
Setup access disabled	SW1/5	On

DRAM CONFIGURATION		
Size	Bank 0	Bank 1
8MB	(2) 1M x 32	None
16MB	(2) 2M x 32	None
16MB	(2) 1M x 32	(2) 1M x 32
24MB	(2) 2M x 32	(2) 1M x 32
24MB	(2) 1M x 32	(2) 2M x 32
32MB	(2) 4M x 32	None
32MB	(2) 2M x 32	(2) 2M x 32
40MB	(2) 4M x 32	(2) 1M x 32
40MB	(2) 1M x 32	(2) 4M x 32
48MB	(2) 4M x 32	(2) 2M x 32
48MB	(2) 2M x 32	(2) 4M x 32
64MB	(2) 8M x 32	None
64MB	(2) 4M x 32	(2) 4M x 32
72MB	(2) 8M x 32	(2) 1M x 32
72MB	(2) 1M x 32	(2) 8M x 32

Continued on next page...

INTEL CORPORATION

ADVANCED/EV (REV. 2)

... continued from previous page

DRAM CONFIGURATION (CON'T)		
Size	Bank 0	Bank 1
80MB	(2) 8M x 32	(2) 2M x 32
80MB	(2) 2M x 32	(2) 8M x 32
96MB	(2) 8M x 32	(2) 4M x 32
96MB	(2) 4M x 32	(2) 8M x 32
128MB	(2) 8M x 32	(2) 8M x 32

Note: Board accepts EDO memory. The location of banks 0 & 1 are unidentified.

CACHE CONFIGURATION			
Size	Bank 0	SL1	TAG
256KB	(2) 32K x 32	None	(1) 32K x 8
256KB	None	256KB module installed	None
512KB	None	512KB module installed	None
512KB	(2) 32K x 32	256KB module installed	(1) 32K x 8
768KB	(2) 32K x 32	512KB module installed	(1) 32K x 8

Note: Bank 0 and the TAG are optional and may not be present on all boards.

VIDEO MEMORY CONFIGURATION		
Size	Bank 0	Bank 1
1MB	1MB	None
2MB	1MB	(2) 256K x 16

Note: Bank 0 is factory installed and is not configurable.

CPU SPEED SELECTION						
CPU speed	Clock speed	Multiplier	J1N1	SW1/6	SW1/7	SW1/8
75MHz	50MHz	1.5x	4 & 5	Off	On	Off
90MHz	60MHz	1.5x	4 & 5	Off	Off	Off
100MHz	66MHz	1.5x	4 & 5	Off	On	On
120MHz	60MHz	2x	4 & 5	On	Off	Off
133MHz	66MHz	2x	4 & 5	On	On	On
150MHz	60MHz	2.5x	5 & 6	On	Off	Off
166MHz	66MHz	2.5x	5 & 6	On	Off	Off
200MHz	66MHz	3x	5 & 6	Off	On	On

Note: Pins designated should be in the closed position.

CPU VOLTAGE SELECTION	
Voltage	SW1/2
3.3v - 3.3465v	Off
3.465v - 3.63v	On

Continued on next page...

INTEL CORPORATION
ADVANCED/EV (REV. 2)*... continued from previous page*

CPU ISA BUS CLOCK SELECTION		
Clock speed	Bus speed	SW1/1
50MHz	8.33MHz	Off/On
í 60MHz	7.5MHz	Off
60MHz	10MHz	On
í 66MHz	8.25MHz	Off
66MHz	11MHz	On