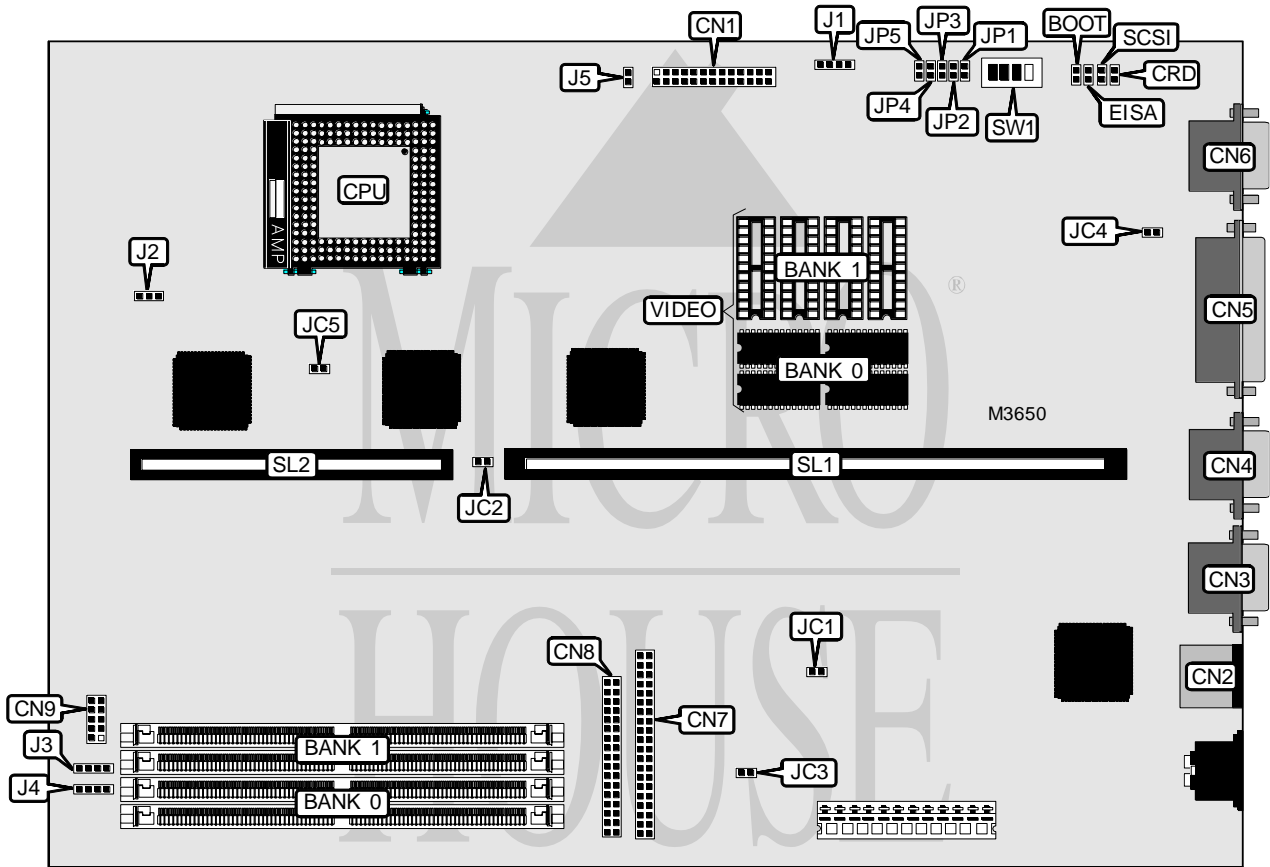


DELL COMPUTER CORPORATION OMNIPLEX 4XX/ME

Processor	80486SX/80486DX/80486DX2/80486DX4
Processor Speed	25/33/50(internal)/66(internal)/75(internal)/100(internal)MHz
Chip Set	Intel
Video Chip Set	ATI
Maximum Onboard Memory	128MB
Maximum Video Memory	1MB
Cache	256KB
BIOS	Unidentified
Dimensions	330mm x 218mm
I/O Options	Floppy drive interface, IDE interface, parallel port, PS/2 mouse port, serial ports (2), feature connector, VGA port, riser slot, cache slot
NPU Options	None



Continued on next page...

DELL COMPUTER CORPORATION OMNIPLEX 4XX/ME

... continued from previous page

CONNECTIONS			
Purpose	Location	Purpose	Location
Feature connector	CN1	Thermal monitor board connector	CN9
PS/2 mouse port	CN2	IDE interface LED	J1
Serial port 1	CN3	Chassis fan power	J2
Serial port 2	CN4	Speaker	J3
Parallel port	CN5	External battery	J4
VGA port	CN6	Audio connector	J5
IDE interface	CN7	Riser slot	SL1
Floppy drive interface	CN8	Cache slot	SL2

USER CONFIGURABLE SETTINGS		
Function	Label	Position
í Factory configured - do not alter	BOOT	Open
í Factory configured - do not alter	CRD	Open
í EISA configuration normal operation	EISA	Open
EISA configuration clear	EISA	Closed
í Factory configured - do not alter	JC1	Unidentified
í Factory configured - do not alter	JC2	Unidentified
í Factory configured - do not alter	JC3	Unidentified
í Factory configured - do not alter	JC4	Unidentified
í Factory configured - do not alter	JC5	Unidentified
í Factory configured - do not alter	JP2	Unidentified
í Factory configured - do not alter	JP4	Unidentified
í Factory configured - do not alter	JP5	Unidentified
í Integrated SCSI host adapter terminated	SCSI	Closed
Integrated SCSI host adapter not terminated	SCSI	Open
í On board video enabled	SW1/1	On
On board video disabled	SW1/1	Off
í Password enabled	SW1/2	On
Password disabled	SW1/2	Off
í I/O controller address select 26Eh - 26Fh	SW1/3	On
I/O controller address select 398h - 399h	SW1/3	Off
í Flash BIOS update at boot	SW1/4	On
flash BIOS not updated at boot	SW1/4	Off

Continued on next page...

DELL COMPUTER CORPORATION

OMNIPLEX 4XX/ME

... continued from previous page

DRAM CONFIGURATION		
Size	Bank 0	Bank 1
4MB	(2) 512K x 36	None
8MB	(2) 1M x 36	None
8MB	(2) 512K x 36	(2) 512K x 36
12MB	(2) 1M x 36	(2) 512K x 36
16MB	(2) 2M x 36	None
16MB	(2) 1M x 36	(2) 1M x 36
20MB	(2) 2M x 36	(2) 512K x 36
24MB	(2) 2M x 36	(2) 1M x 36
32MB	(2) 4M x 36	None
32MB	(2) 2M x 36	(2) 2M x 36
36MB	(2) 4M x 36	(2) 512K x 36
40MB	(2) 4M x 36	(2) 1M x 36
48MB	(2) 4M x 36	(2) 2M x 36
64MB	(2) 8M x 36	None
64MB	(2) 4M x 36	(2) 4M x 36
68MB	(2) 8M x 36	(2) 512K x 36
72MB	(2) 8M x 36	(2) 1M x 36
80MB	(2) 8M x 36	(2) 2M x 36
96MB	(2) 8M x 36	(2) 4M x 36
128MB	(2) 8M x 36	(2) 8M x 36

Note: Board also accepts x 32 SIMMs.

CACHE CONFIGURATION	
Size	SL1
256KB	256KB module installed

VIDEO MEMORY CONFIGURATION		
Size	Bank 0	Bank 1
512KB	512KB	None
1MB	512KB	(4) 256K x 4

Note: Bank 0 is factory installed and is not configurable.

CPU SPEED SELECTION		
Speed	JP1	JP3
25MHz	Closed	Open
33MHz	Open	Closed
50iMHz	Closed	Open
66iMHz	Open	Closed
75iMHz	Closed	Open
100iMHz	Open	Closed