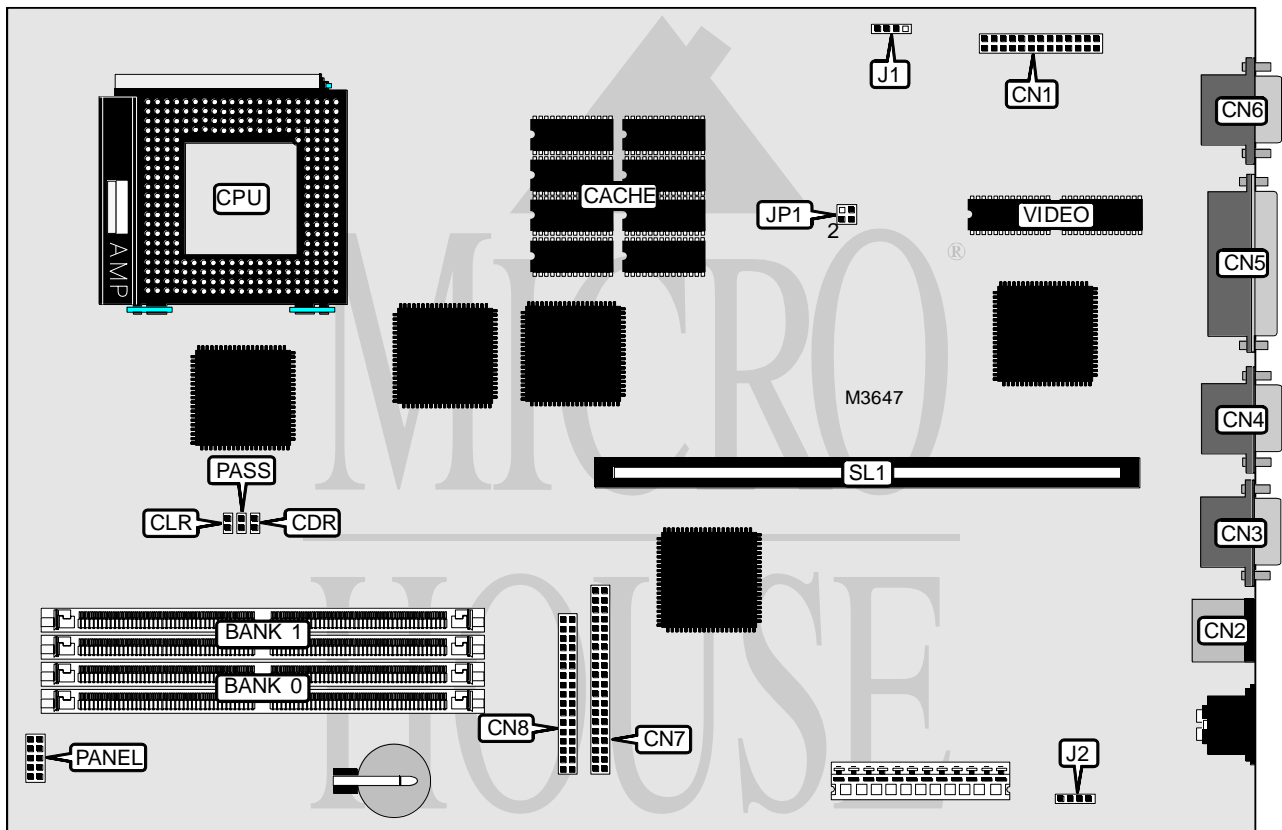


DELL COMPUTER CORPORATION OPTIPLEX 560/L

Processor	Pentium
Processor Speed	60/66MHz
Chip Set	Intel
Video Chip Set	Cirrus Logic
Maximum Onboard Memory	128MB
Maximum Video Memory	1MB
Cache	256KB
BIOS	Unidentified
Dimensions	330mm x 218mm
I/O Options	Floppy drive interface, IDE interface, parallel port, PS/2 mouse port, serial ports (2), feature connector, VGA port, riser slot
NPU Options	None



CONNECTIONS			
Purpose	Location	Purpose	Location
Feature connector	CN1	IDE interface	CN7
PS/2 mouse port	CN2	Floppy drive interface	CN8
Serial port 2	CN3	IDE interface LED 1	J1
Serial port 1	CN4	IDE interface LED 2	J2
Parallel port	CN5	Front panel connector	PANEL
VGA port	CN6	Riser slot	SL1

Continued on next page. . .

DELL COMPUTER CORPORATION OPTIPLEX 560/L

... continued from previous page

USER CONFIGURABLE SETTINGS		
Function	Label	Position
í System BIOS read from flash BIOS	CDR	Open
System BIOS read from a special ISA slot (use when flash is corrupt)	CDR	Closed
í CMOS memory normal operation	CLR	Open
CMOS memory clear	CLR	Closed
í Password enabled	PASS	Closed
Password disabled	PASS	Open

DRAM CONFIGURATION		
Size	Bank 0	Bank 1
8MB	(2) 1M x 32	None
16MB	(2) 2M x 32	None
16MB	(2) 1M x 32	(2) 1M x 32
24MB	(2) 2M x 32	(2) 1M x 32
32MB	(2) 4M x 32	None
32MB	(2) 2M x 32	(2) 2M x 32
40MB	(2) 4M x 32	(2) 1M x 32
48MB	(2) 4M x 32	(2) 2M x 32
64MB	(2) 8M x 32	None
64MB	(2) 4M x 32	(2) 4M x 32
72MB	(2) 8M x 32	(2) 1M x 32
80MB	(2) 8M x 32	(2) 2M x 32
48MB	(2) 2M x 32	(2) 4M x 32
96MB	(2) 8M x 32	(2) 4M x 32
128MB	(2) 8M x 32	(2) 8M x 32

CACHE CONFIGURATION
Note: 256KB cache is factory installed and is not configurable.

VIDEO MEMORY CONFIGURATION
Note: 1MB video is factory installed and is not configurable.

CPU SPEED SELECTION	
Speed	JP1
60MHz	Pins 1 & 2 closed
66MHz	Pins 3 & 4 closed