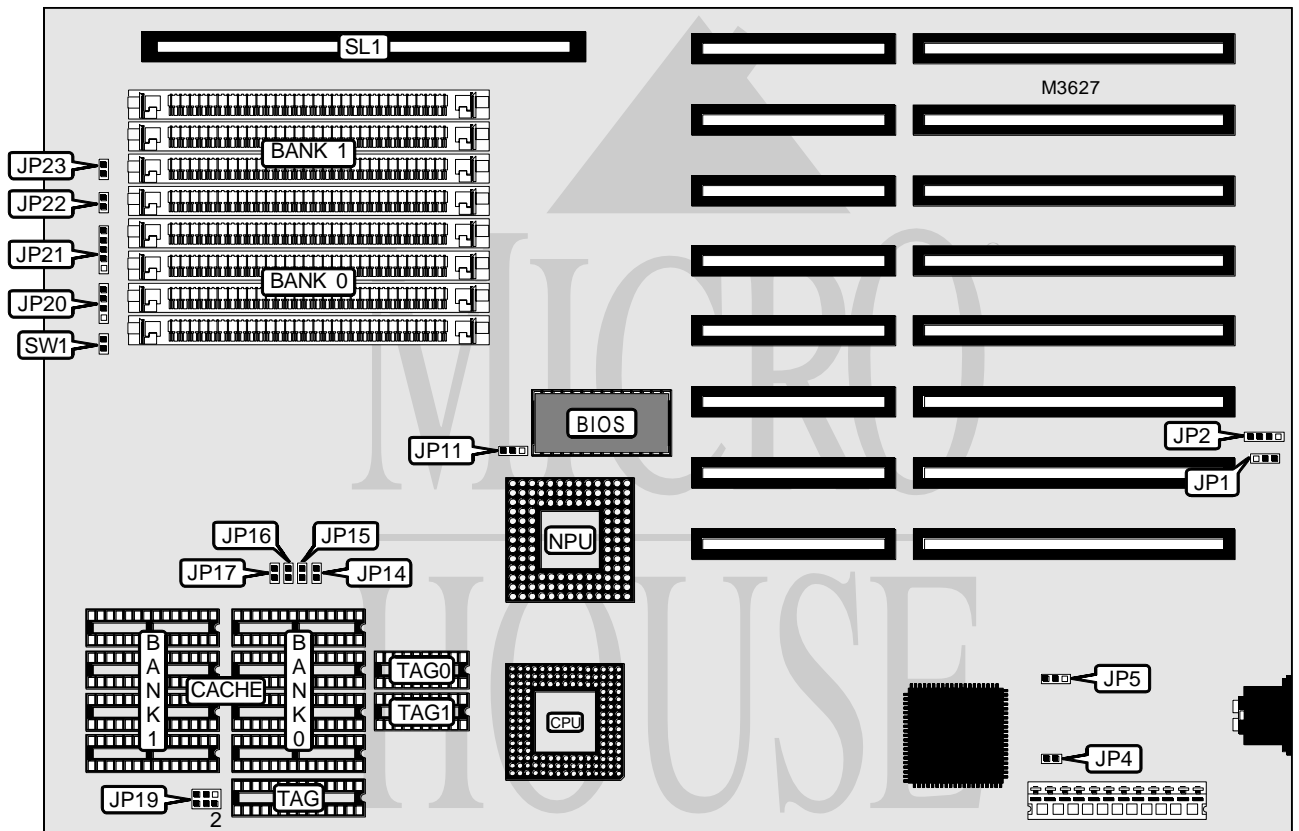


UNIDENTIFIED

386 SIS CACHE

Processor	80386
Processor Speed	25/33MHz
Chip Set	SIS
Video Chip Set	None
Maximum Onboard Memory	16MB (8MB on external memory card)
Maximum Video Memory	None
Cache	32/64/128KB
BIOS	AMI
Dimensions	330mm x 218mm
I/O Options	External memory card
NPU Options	80387/3167



CONNECTIONS			
Purpose	Location	Purpose	Location
External battery	JP2	Turbo LED	JP23
Speaker	JP20	External memory card	SL1
Power LED & keylock	JP21	Reset switch	SW1
Turbo switch	JP22		

Continued on next page . . .

UNIDENTIFIED

386 SIS CACHE

... continued from previous page

USER CONFIGURABLE SETTINGS		
Function	Label	Position
í CMOS memory normal operation	JP1	Pins 2 & 3 closed
CMOS memory clear	JP1	Pins 1 & 2 closed
Monitor type select color	JP4	Closed
Monitor type select monochrome	JP4	Open
í Power good signal detect from power supply	JP5	Pins 1 & 2 closed
Power good signal detect from board	JP5	Pins 2 & 3 closed
NPU not installed	JP11	Pins 1 & 2 closed
NPU installed	JP11	Pins 2 & 3 closed

DRAM CONFIGURATION				
Size	Bank 0	Bank 1	Bank 2	Bank 3
1MB	(4) 256K x 9	None	None	None
2MB	(4) 256K x 9	(4) 256K x 9	None	None
4MB	(4) 1M x 9	None	None	None
8MB	(4) 1M x 9	(4) 1M x 9	None	None
12MB	(4) 1M x 9	(4) 1M x 9	(4) 1M x 9	None
16MB	(4) 1M x 9	(4) 1M x 9	(4) 1M x 9	(4) 1M x 9

Note: Banks 2 & 3 are located on the external memory card.

CACHE CONFIGURATION (EXTERNAL)		
Size	Bank 0	Bank 1
32KB	None	(4) 8K x 8
64KB	(4) 8K x 8	(1) 8K x 8
128KB	(4) 32K x 8	None

CACHE TAG CONFIGURATION (EXTERNAL)			
Size	TAG	TAG 0	TAG 1
32KB	None	(1) 16K x 4	(1) 16K x 4
64KB	None	(1) 16K x 4	(1) 16K x 4
128KB	(1) 32K x 8	None	None

CACHE JUMPER CONFIGURATION (EXTERNAL)	
Size	JP19
32KB	Pins 1 & 2 closed
64KB	Pins 3 & 4 closed
128KB	Pins 5 & 6 closed

CACHE JUMPER CONFIGURATION (INTERNAL)				
Size	JP14	JP15	JP16	JP17
128KB internal enabled	Closed	Closed	Closed	Closed
128KB internal disabled	Open	Open	Open	Open

Note: To use internal 128KB cache, remove all external cache chips. Turn system on and press INS key. Then press F1 and enable cache in BIOS setup.