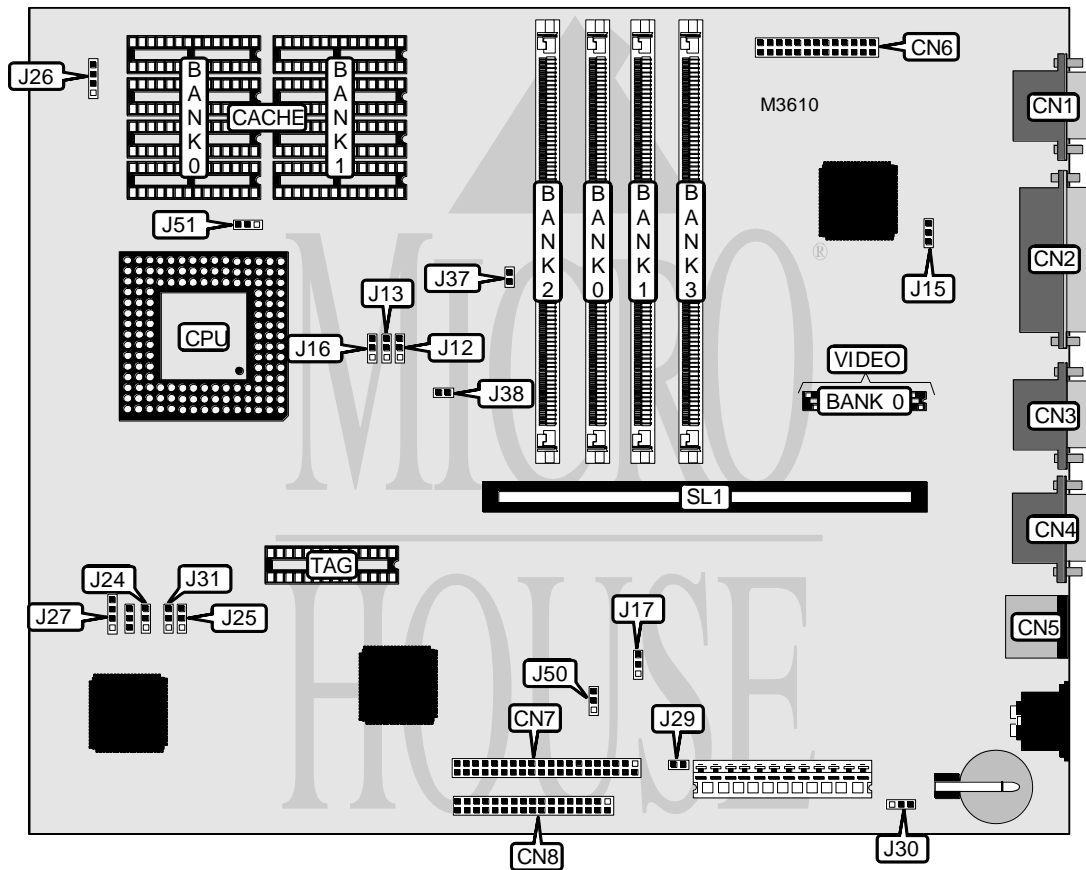


# IBM CORPORATION APTIVA 2144

<b>Processor</b>	80486SX/80486SX2/80487SX/80486DX/80486DX2/P24T
<b>Processor Speed</b>	25/33/50(internal)/66(internal)MHz
<b>Chip Set</b>	Unidentified
<b>Video Chip Set</b>	Unidentified
<b>Maximum Onboard Memory</b>	64MB
<b>Maximum Video Memory</b>	Unidentified
<b>Cache</b>	128/256KB
<b>BIOS</b>	Unidentified
<b>Dimensions</b>	254mm x 218mm
<b>I/O Options</b>	Floppy drive interface, IDE interface, parallel port, PS/2 mouse port, serial ports (2), VESA feature connector, VGA port, riser slot,
<b>NPU Options</b>	None



*Continued on next page . . .*

# IBM CORPORATION

## APTIVA 2144

... continued from previous page

CONNECTIONS			
Purpose	Location	Purpose	Location
VGA port	CN1	Floppy drive interface	CN8
Parallel port	CN2	IDE interface LED	J26
Serial port	CN3	Speaker	J27
Serial port	CN4	Auxiliary power connector	J29
PS/2 mouse port	CN5	Auxiliary power connector	J30
VESA feature connector	CN6	Chassis fan power	J38
IDE interface	CN7	Riser slot	SL1

USER CONFIGURABLE SETTINGS		
Function	Label	Position
On board video enabled	J15	Pins 1 & 2 closed
On board video disabled	J15	Pins 2 & 3 closed
Parity enabled	J50	Pins 1 & 2 closed
Parity disabled	J50	Pins 2 & 3 closed

DRAM CONFIGURATION				
Size	Bank 0	Bank 1	Bank 2	Bank 3
1MB	(1) 256K x 36	None	None	None
2MB	(1) 512K x 36	None	None	None
4MB	(1) 1M x 36	None	None	None
4MB	(1) 512K x 36	(1) 512K x 36	None	None
4MB	(1) 256K x 36	(1) 256K x 36	(1) 256K x 36	(1) 256K x 36
5MB	(1) 1M x 36	(1) 256K x 36	None	None
6MB	(1) 1M x 36	(1) 256K x 36	(1) 256K x 36	None
7MB	(1) 1M x 36	(1) 256K x 36	(1) 256K x 36	(1) 256K x 36
8MB	(1) 2M x 36	None	None	None
8MB	(1) 1M x 36	(1) 1M x 36	None	None
10MB	(1) 2M x 36	(1) 256K x 36	(1) 256K x 36	None
12MB	(1) 2M x 36	(1) 1M x 36	None	None
12MB	(1) 1M x 36	(1) 1M x 36	(1) 1M x 36	None
14MB	(1) 2M x 36	(1) 512K x 36	(1) 512K x 36	(1) 512K x 36
16MB	(1) 4M x 36	None	None	None
16MB	(1) 2M x 36	(1) 2M x 36	None	None
16MB	(1) 1M x 36	(1) 1M x 36	(1) 1M x 36	(1) 1M x 36
17MB	(1) 4M x 36	(1) 256K x 36	None	None
18MB	(1) 4M x 36	(1) 256K x 36	(1) 256K x 36	None
20MB	(1) 4M x 36	(1) 1M x 36	None	None
22MB	(1) 4M x 36	(1) 512K x 36	(1) 512K x 36	(1) 512K x 36
24MB	(1) 4M x 36	(1) 1M x 36	(1) 1M x 36	None
28MB	(1) 4M x 36	(1) 1M x 36	(1) 1M x 36	(1) 1M x 36
32MB	(1) 8M x 36	None	None	None
32MB	(1) 4M x 36	(1) 4M x 36	None	None

Continued on next page...

# IBM CORPORATION

## APTIVA 2144

... continued from previous page

DRAM CONFIGURATION				
Size	Bank 0	Bank 1	Bank 2	Bank 3
32MB	(1) 2M x 36	(1) 2M x 36	(1) 2M x 36	(1) 2M x 36
34MB	(1) 8M x 36	(1) 512K x 36	None	None
36MB	(1) 8M x 36	(1) 1M x 36	None	None
40MB	(1) 2M x 36	(1) 8M x 36	None	None
44MB	(1) 8M x 36	(1) 1M x 36	(1) 1M x 36	(1) 1M x 36
48MB	(1) 8M x 36	(1) 2M x 36	(1) 2M x 36	None
64MB	(1) 8M x 36	(1) 8M x 36	None	None
64MB	(1) 4M x 36	(1) 4M x 36	(1) 4M x 36	(1) 4M x 36

CACHE CONFIGURATION			
Size	Bank 0	Bank 1	TAG
128KB	(4) 32K x 8	None	(1) 8K x 8
256KB	(4) 32K x 8	(4) 32K x 8	(1) 32K x 8

CACHE JUMPER CONFIGURATION					
Size	J12	J13	J16	J17	J51
128KB	2 & 3	1 & 2	2 & 3	1 & 2	1 & 2
256KB	1 & 2	2 & 3	1 & 2	2 & 3	2 & 3

Note: Pins designated should be in the closed position.

VIDEO MEMORY CONFIGURATION
Note: The size of the video memory chip is unidentified.

CPU SPEED SELECTION	
Speed	J37
25MHz	Closed
33MHz	Open
50MHz	Closed
66MHz	Open

CPU TYPE SELECTION				
Processor installed	Processor upgrade	J24	J25	J31
80486SX	80486SX2	Pins 1 & 2 closed	Pins 2 & 3 closed	Pins 1 & 2 closed
80486SX	80487SX	Pins 2 & 3 closed	Pins 2 & 3 closed	Pins 1 & 2 closed
80486SX	80486DX	Pins 1 & 2 closed	Pins 2 & 3 closed	Pins 1 & 2 closed
80486SX	80486DX2	Pins 1 & 2 closed	Pins 2 & 3 closed	Pins 1 & 2 closed
80486SX	P24T	Pins 2 & 3 closed	Pins 2 & 3 closed	Pins 1 & 2 closed
80486SX2	P24T	Pins 2 & 3 closed	Pins 1 & 2 closed	Pins 2 & 3 closed
80486DX	80486SX2	Pins 2 & 3 closed	Pins 1 & 2 closed	Pins 2 & 3 closed
80486DX	80486DX2	Pins 1 & 2 closed	Pins 1 & 2 closed	Pins 2 & 3 closed
80486DX	P24T	Pins 1 & 2 closed	Pins 1 & 2 closed	Pins 2 & 3 closed
80486DX2	P24T	Pins 2 & 3 closed	Pins 1 & 2 closed	Pins 2 & 3 closed