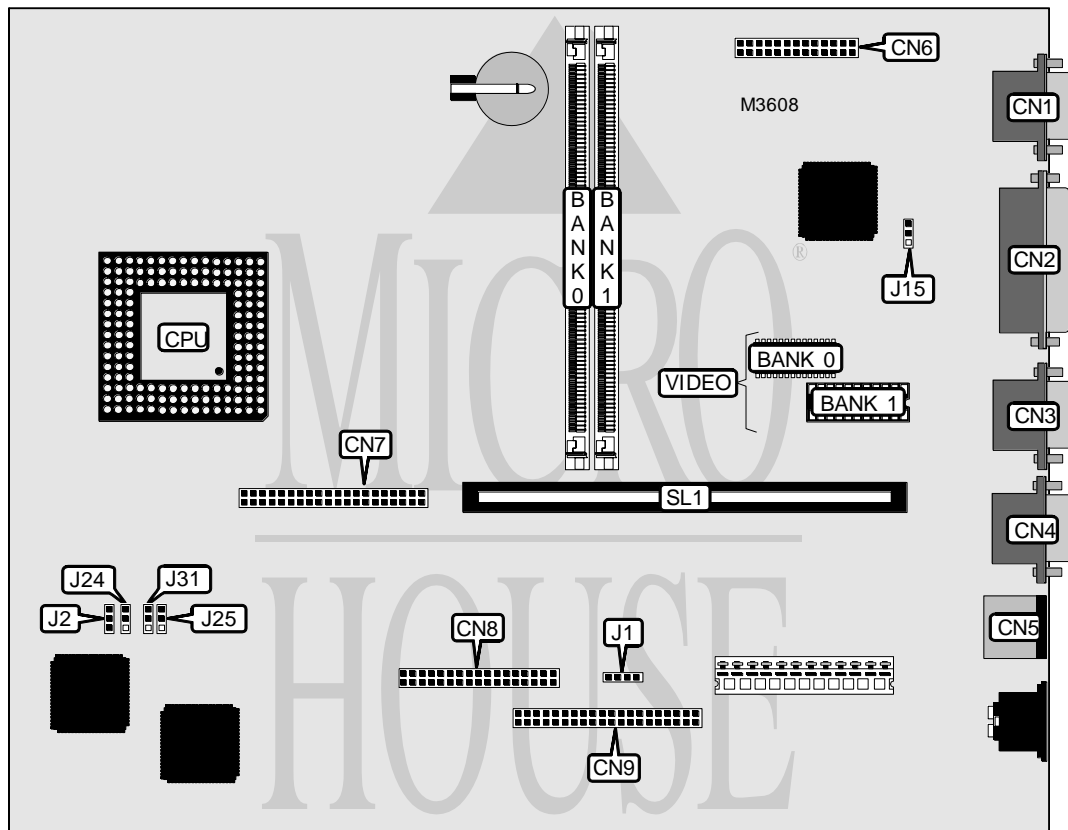


IBM CORPORATION

A P T I V A

Processor	80486SX/80486SX2/80487SX/80486DX/80486DX2/P24T
Processor Speed	25/33/50(internal)/66(internal)MHz
Chip Set	Unidentified
Video Chip Set	Unidentified
Maximum Onboard Memory	64MB
Maximum Video Memory	1MB
Cache	None
BIOS	Unidentified
Dimensions	254mm x 218mm
I/O Options	Floppy drive interface, IDE interface, parallel port, PS/2 mouse port, serial ports (2), VESA feature connector, VGA port, riser slot, local bus connector, wake up on ring connector
NPU Options	None



CONNECTIONS			
Purpose	Location	Purpose	Location
VGA port	CN1	Local bus connector	CN7
Parallel port	CN2	Floppy drive interface	CN8
Serial port	CN3	IDE interface	CN9
Serial port	CN4	Wake up on ring connector	J1
PS/2 mouse port	CN5	Riser slot	SL1
VESA feature connector	CN6		

Continued on next page. . .

IBM CORPORATION

A P T I V A

... continued from previous page

USER CONFIGURABLE SETTINGS		
Function	Label	Position
í Factory configured - do not alter	J2	Unidentified
On board video enabled	J15	Pins 1 & 2 closed
On board video disabled	J15	Pins 2 & 3 closed

DRAM CONFIGURATION		
Size	Bank 0	Bank 1
2MB	(1) 512K x 36	None
4MB	(1) 1M x 36	None
6MB	(1) 1M x 36	(1) 512K x 36
6MB	(1) 512K x 36	(1) 1M x 36
8MB	(1) 2M x 36	None
8MB	(1) 1M x 36	(1) 1M x 36
10MB	(1) 2M x 36	(1) 512K x 36
10MB	(1) 512K x 36	(1) 2M x 36
12MB	(1) 2M x 36	(1) 1M x 36
12MB	(1) 1M x 36	(1) 2M x 36
16MB	(1) 4M x 36	None
16MB	(1) 2M x 36	(1) 2M x 36
18MB	(1) 4M x 36	(1) 512K x 36
18MB	(1) 512K x 36	(1) 4M x 36
20MB	(1) 4M x 36	(1) 1M x 36
20MB	(1) 1M x 36	(1) 4M x 36
24MB	(1) 4M x 36	(1) 2M x 36
24MB	(1) 2M x 36	(1) 4M x 36
32MB	(1) 8M x 36	None
32MB	(1) 4M x 36	(1) 4M x 36
34MB	(1) 8M x 36	(1) 512K x 36
34MB	(1) 512K x 36	(1) 8M x 36
36MB	(1) 8M x 36	(1) 1M x 36
36MB	(1) 1M x 36	(1) 8M x 36
40MB	(1) 8M x 36	(1) 2M x 36
40MB	(1) 2M x 36	(1) 8M x 36
48MB	(1) 8M x 36	(1) 4M x 36
48MB	(1) 4M x 36	(1) 8M x 36
64MB	(1) 8M x 36	(1) 8M x 36

VIDEO MEMORY CONFIGURATION		
Size	Bank 0	Bank 1
512KB	512KB	None
1MB	512KB	(1) 256K x 16

Note: 1MB video memory may be already factory installed. Bank 0 is factory installed and is not configurable.

Continued on next page. . .

IBM CORPORATION

APTIVA

... continued from previous page

CPU TYPE SELECTION				
Processor installed	Processor upgrade	J24	J25	J31
80486SX	80486SX2	Pins 1 & 2 closed	Pins 2 & 3 closed	Pins 1 & 2 closed
80486SX	80487SX	Pins 2 & 3 closed	Pins 2 & 3 closed	Pins 1 & 2 closed
80486SX	80486DX	Pins 1 & 2 closed	Pins 2 & 3 closed	Pins 1 & 2 closed
80486SX	80486DX2	Pins 1 & 2 closed	Pins 2 & 3 closed	Pins 1 & 2 closed
80486SX	P24T	Pins 2 & 3 closed	Pins 2 & 3 closed	Pins 1 & 2 closed
80486SX2	P24T	Pins 2 & 3 closed	Pins 1 & 2 closed	Pins 2 & 3 closed
80486DX	80486SX2	Pins 2 & 3 closed	Pins 1 & 2 closed	Pins 2 & 3 closed
80486DX	80486DX2	Pins 1 & 2 closed	Pins 1 & 2 closed	Pins 2 & 3 closed
80486DX	P24T	Pins 1 & 2 closed	Pins 1 & 2 closed	Pins 2 & 3 closed
80486DX2	P24T	Pins 2 & 3 closed	Pins 1 & 2 closed	Pins 2 & 3 closed